

3730-3748 SILVER STAR ROAD | ORLANDO, FL 32808

FOR LEASE



LISTING DATA

Available SF: Suite 3734 | 4,800 SF

Building Size: 31,200 SF

Clear Height: 18'

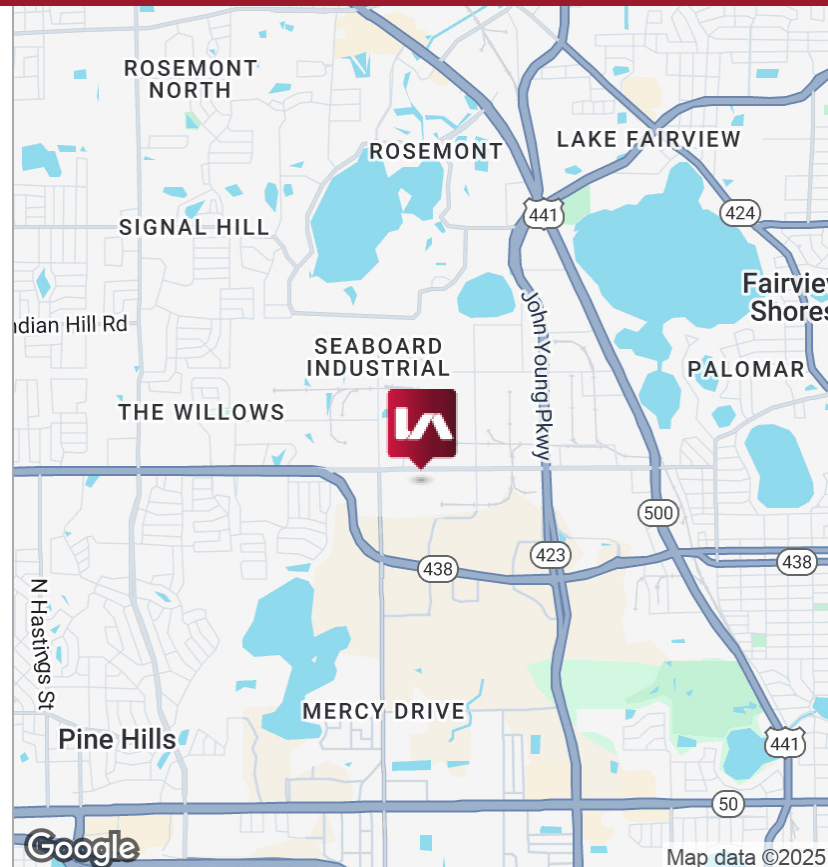
Zoning: I-P/W, City of Orlando

Loading: Rear

Comments: 31,200 SF Class B rear-load industrial building zoned I-P/W, City of Orlando

ECONOMIC DATA

Lease Rate: CALL FOR INFO



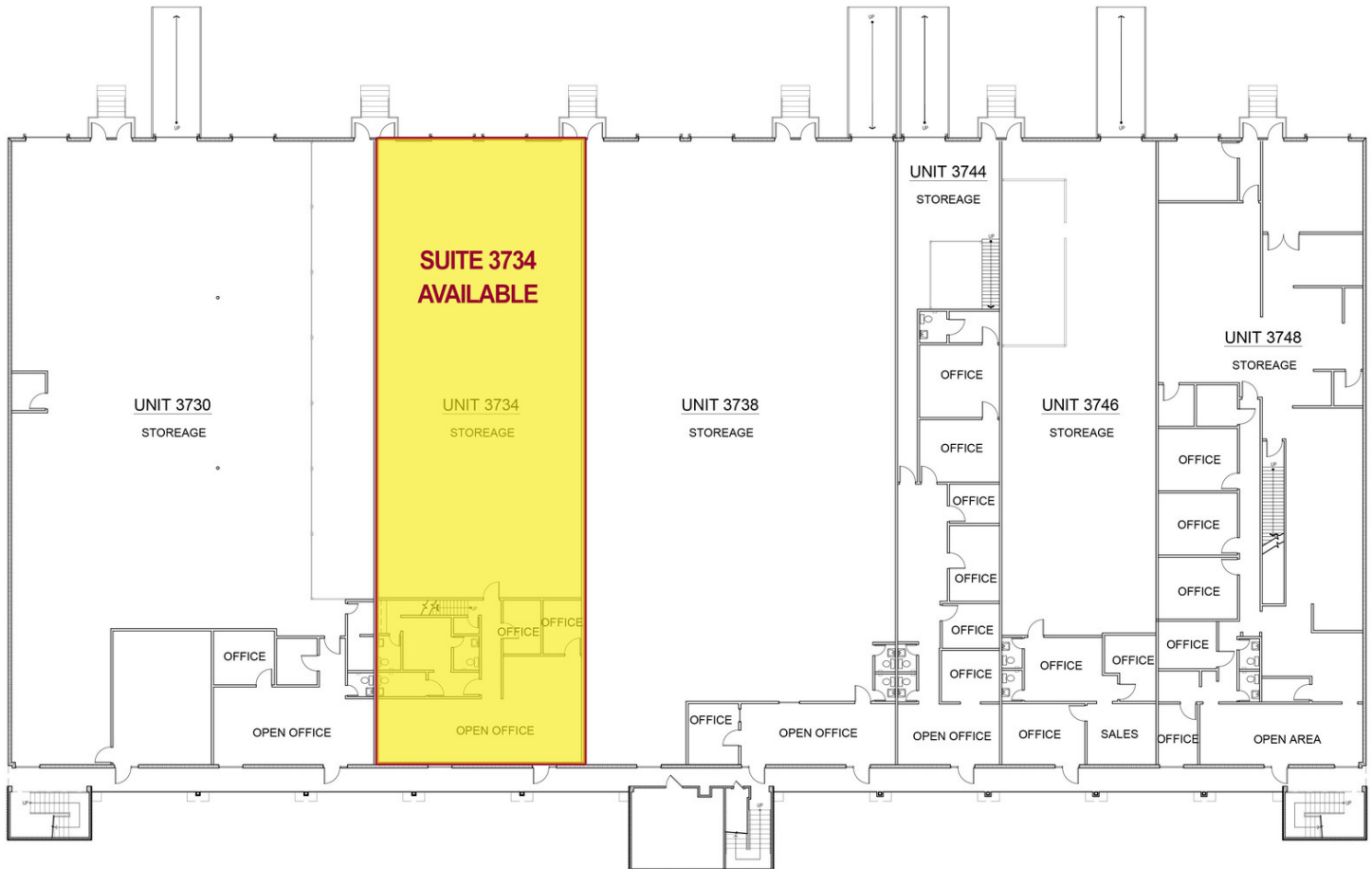


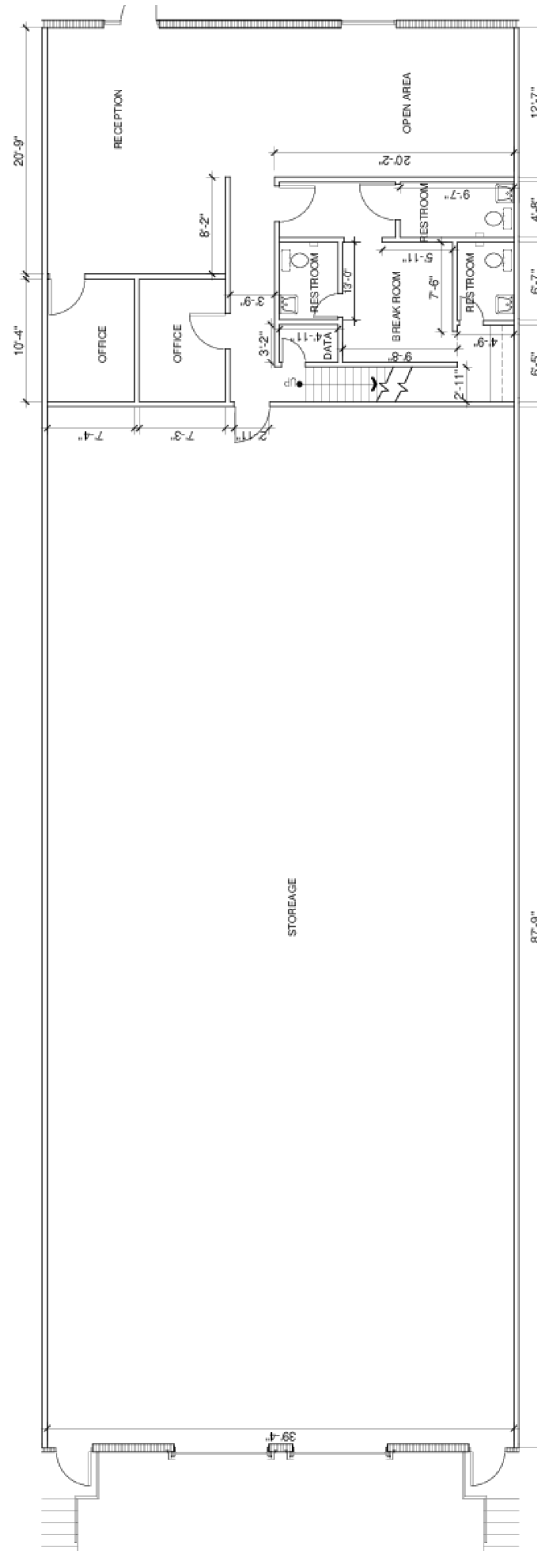
LEASE INFORMATION

Lease Type:	NNN	Lease Term:	Negotiable
Total Space:	4,800 SF	Lease Rate:	Call For Info

AVAILABLE SPACES

SUITE	TENANT	SIZE (SF)	LEASE TYPE	LEASE RATE	DESCRIPTION
Suite 3734	Available	4,800 SF	NNN	Call For Info	1,300 SF Office with 2 van high doors





SUITE 3734 - 4,800 SF



PHOTOS | SUITE 3734 - 4,800 SF