

1120 KEVSTIN DRIVE | KISSIMMEE, FL 34744

FOR LEASE



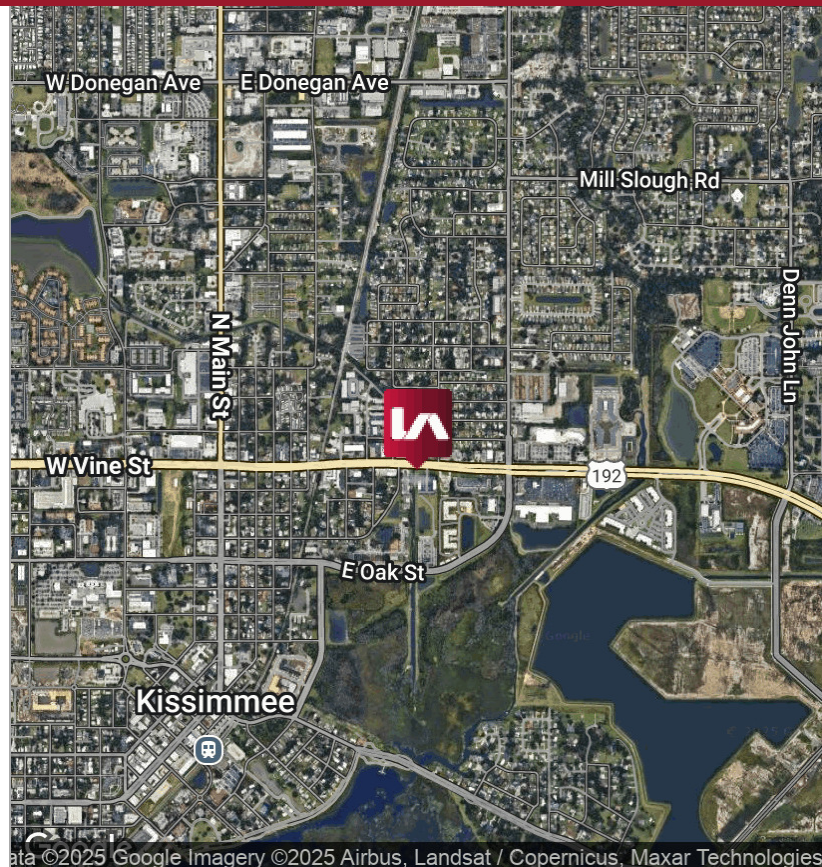
LISTING DATA

Available SF: 4,400 SF

Comments: Construction work has begun with expected completion by the end of 2nd quarter 2025. Landlord will deliver a cold dark shell with a dirt floor for a build to suit opportunity. Phase II of Kissimmee Professional Village has delivered 5 out of 7 planned buildings featuring both medical and professional office uses in a park like setting. The Buildings offer direct parking lot access, fascia signage and easy access to East Oak Street.

ECONOMIC DATA

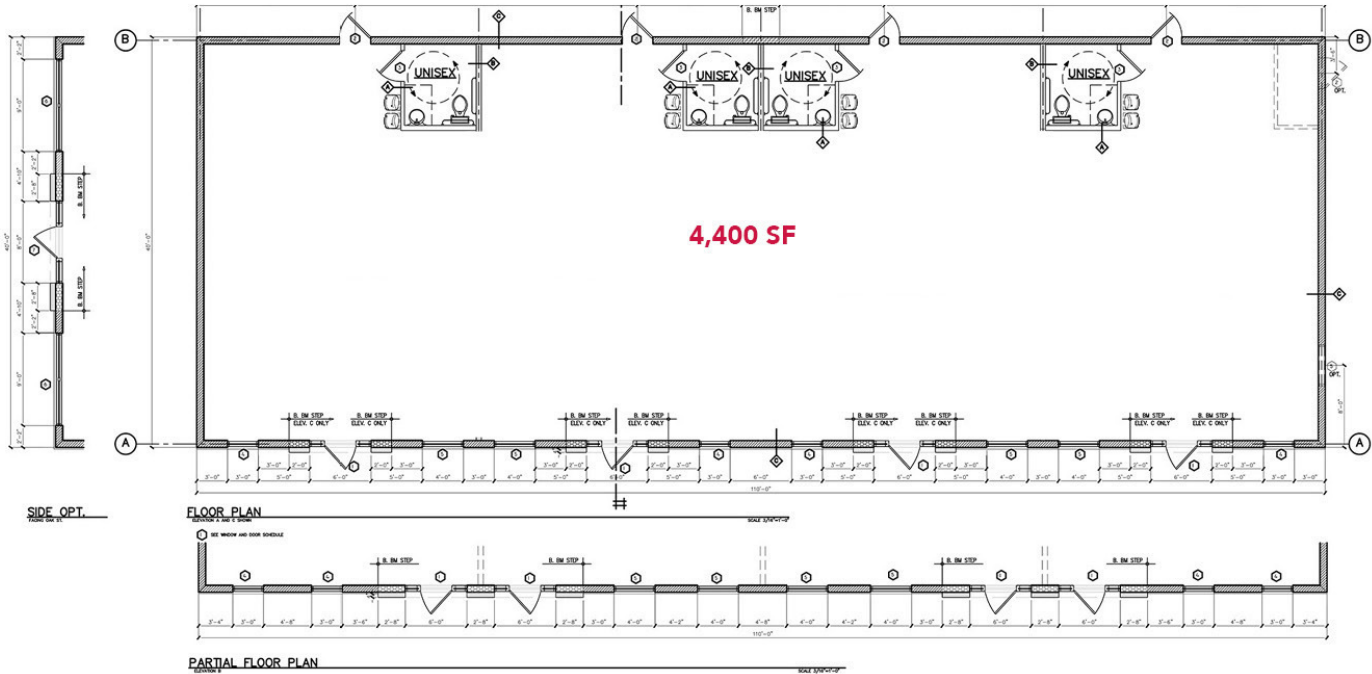
Lease Rate: \$28.00 SF/yr (NNN)



1120 KEVSTIN DRIVE | KISSIMMEE, FL 34744

FOR LEASE

SITE PLAN



PHASE II

PHASE III

PHASE I

