

For Sale

Freestanding Office Building in Baldwin Park

2,603 SF | \$1,120,000



934 Lake Baldwin Lane

Orlando, Florida 32814

Property Highlights

- 2,603± SF single story, attractive office building in Baldwin Park
- Flexible floor plan - combination of private offices and open area
- Ample surface parking in common parking lot
- Within walking distance of downtown Baldwin Park restaurants and shops
- Easy access to Colonial Drive (SR 50), Semoran Blvd (SR 436), Mills Ave (US Hwy 17-92), I-4 and SR 408 (East-West)
- Orlando Executive Airport is just across Colonial Drive
- Close to Downtown Orlando and Winter Park
- Zoning: ORL-PD/AN



Sale Price: \$1,120,000

For more information

Jeffrey Bloom, CCIM

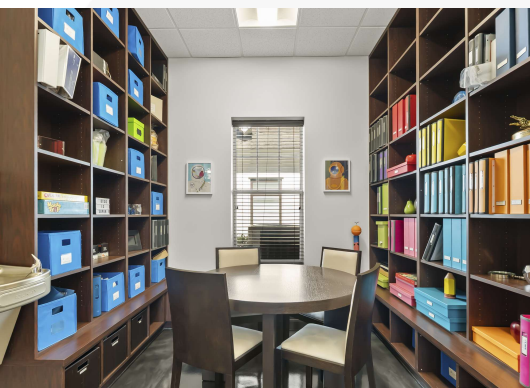
O: 407 949 0709

jbloom@realvest.com

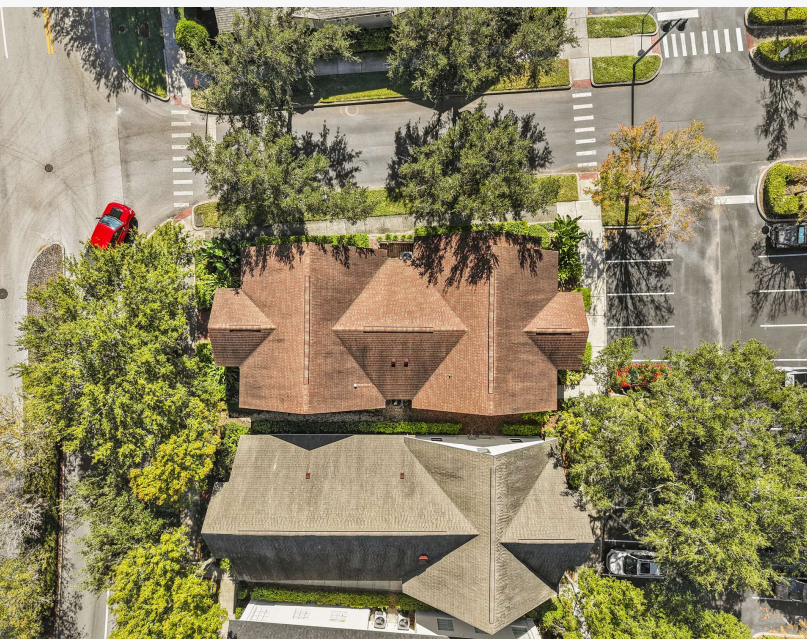
Floor Plan



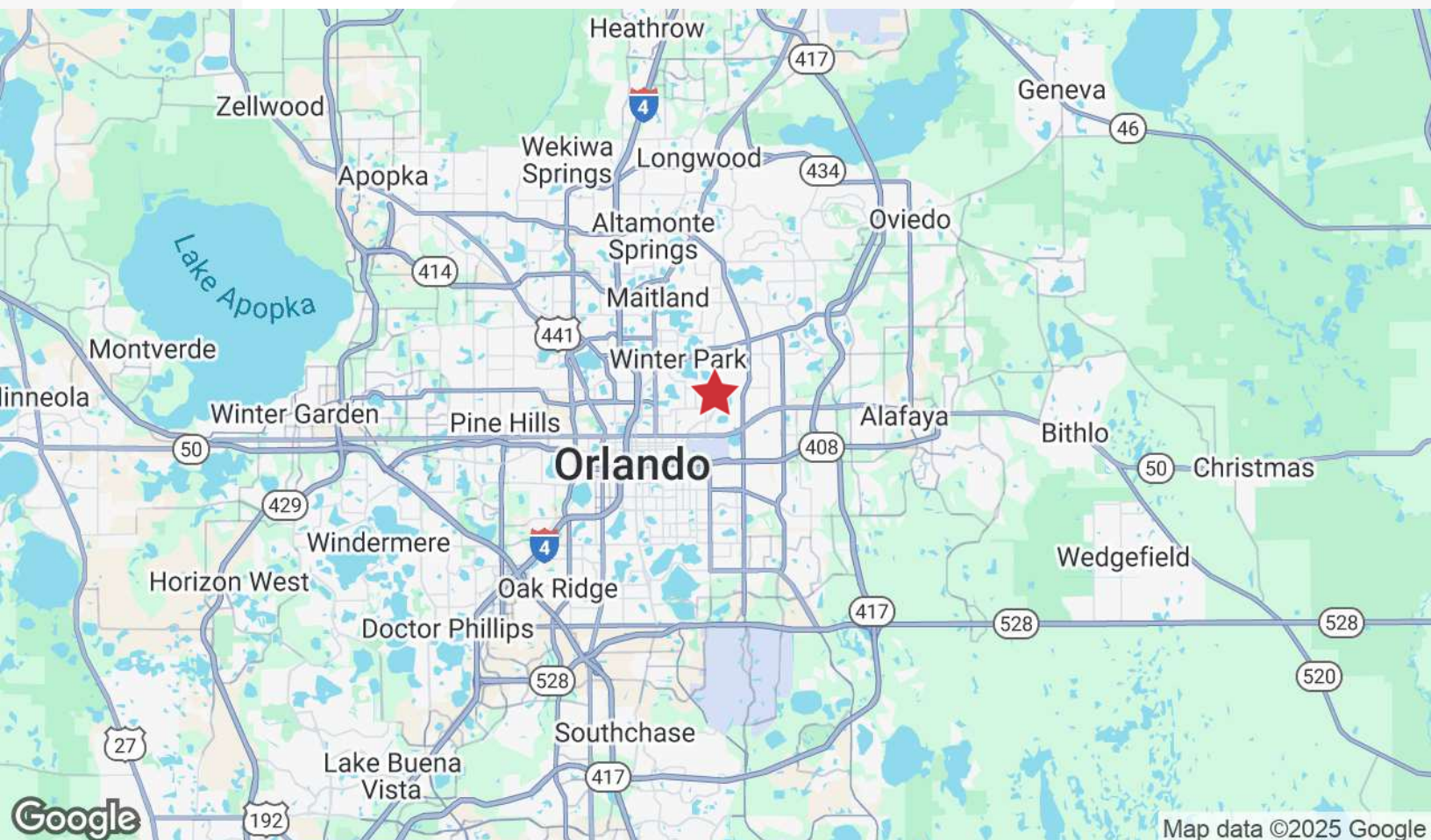
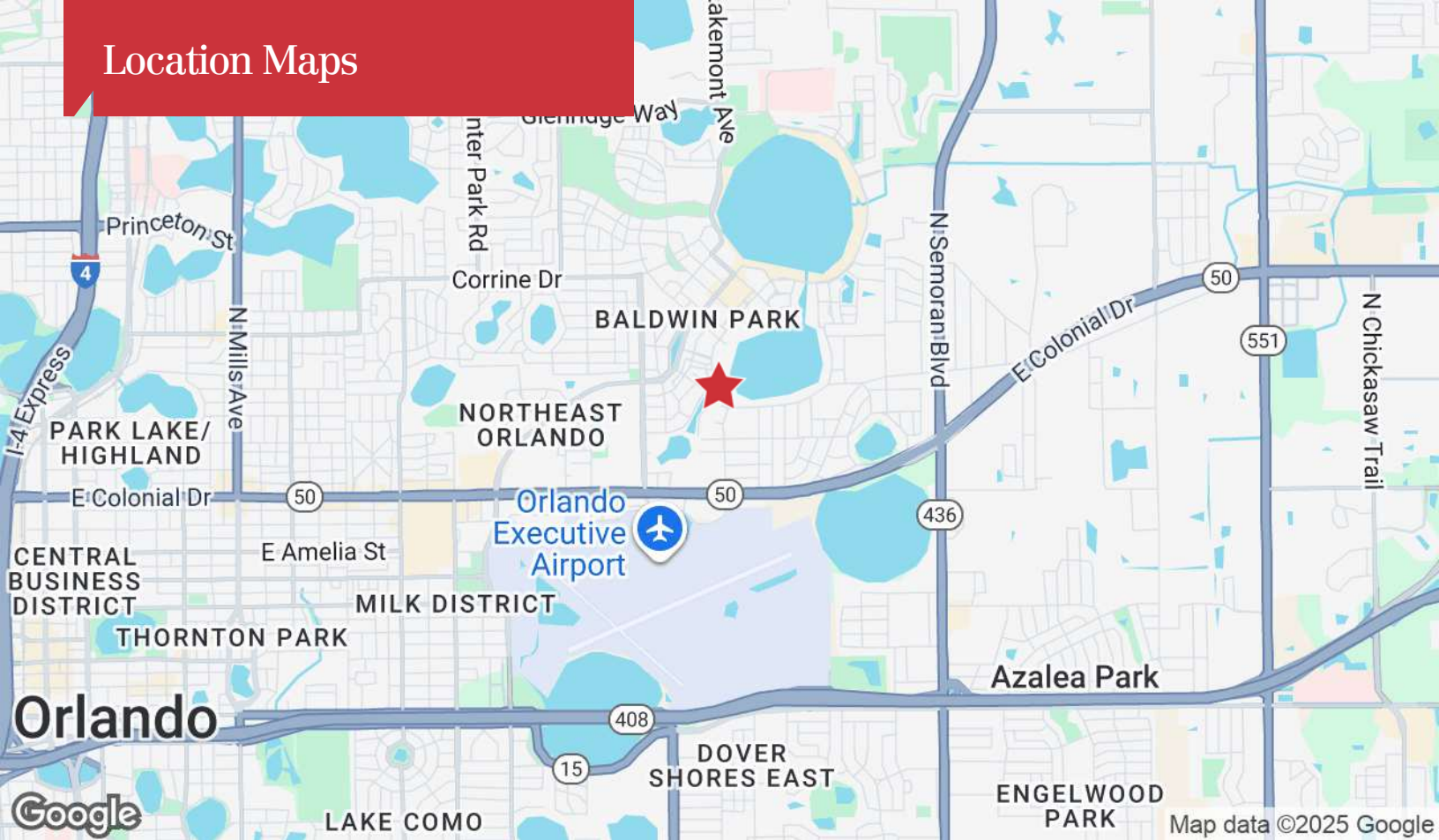
Interior Photos



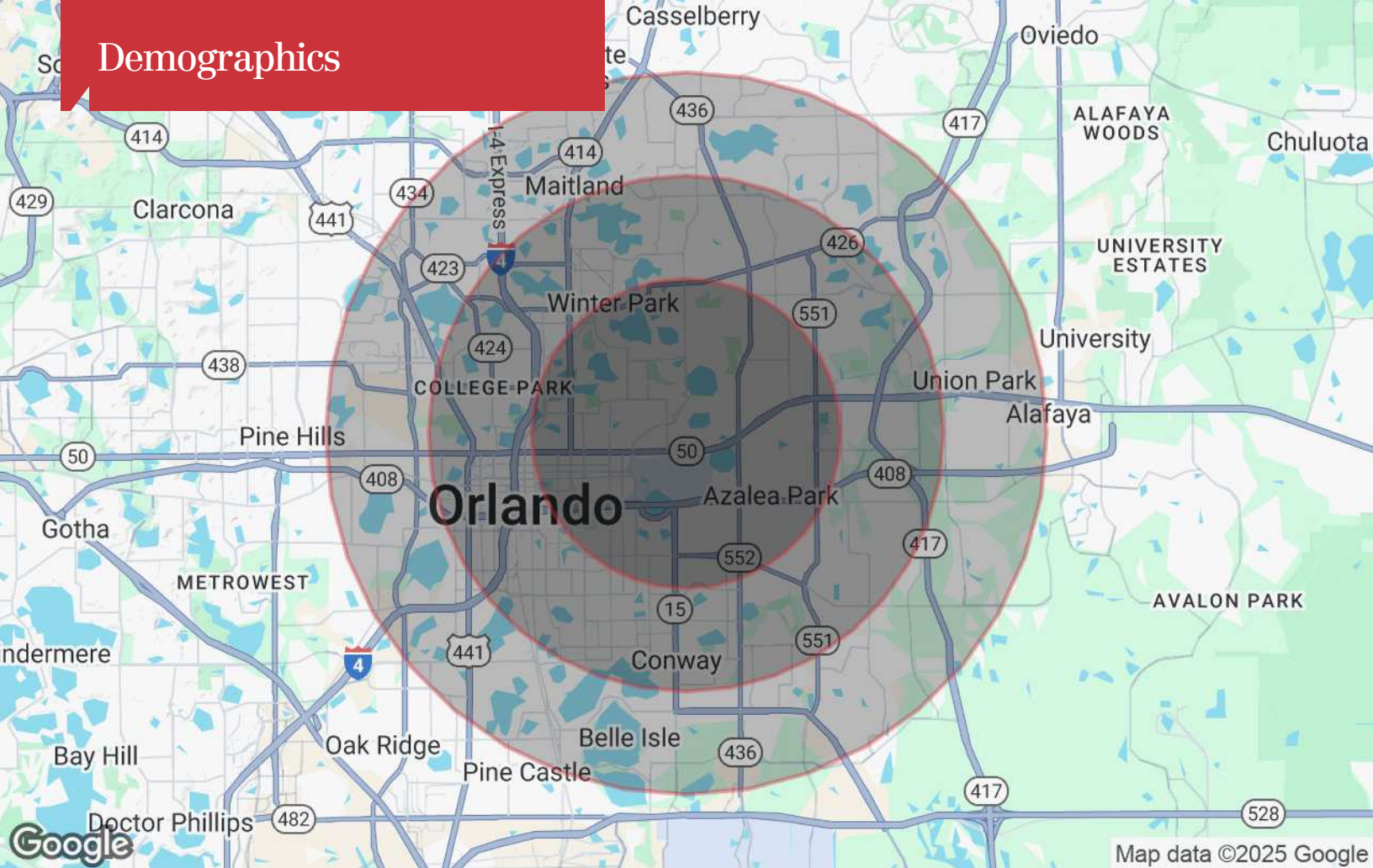
Exterior Photos



Location Maps



Demographics



Population

	3 Miles	5 Miles	7 Miles
TOTAL POPULATION	117,293	324,103	553,680
MEDIAN AGE	41	41	40
MEDIAN AGE (MALE)	40	39	39
MEDIAN AGE (FEMALE)	42	42	41

Households & Income

	3 Miles	5 Miles	7 Miles
TOTAL HOUSEHOLDS	52,264	138,763	225,272
# OF PERSONS PER HH	2.2	2.3	2.5
AVERAGE HH INCOME	\$110,735	\$100,586	\$97,563
AVERAGE HOUSE VALUE	\$489,384	\$440,603	\$408,916

* Demographic data derived from 2020 ACS - US Census