

Freestanding! 7,245 SF - Fenced!

270/272 BETH STACEY BLVD, LEHIGH ACRES, FL 33936

**FOR LEASE**

Call Theresa Today!



FOR LEASE

\$12.00 NNN

7,245/SF 1.72 ACRES

C-2 ZONING

ALLOWS FOR MANY  
USES!



## LEHIGH'S ONE AND ONLY FLEA MARKET!

- Currently operating as an indoor flea market. Flea market spots available for lease.
- Landlord will consider leasing to a single tenant.
- Property is also available for sale.
- Call Theresa for details !Habla Espanol!
- Please do not disturb the Tenants



**Theresa Blauch-Mitchell, CCIM**  
1922 VICTORIA AVE STE C FT MYERS, FL 33901  
239.265.2628  
theresa@ccim.net  
FL #BK3202944

Each office independently owned and operated.

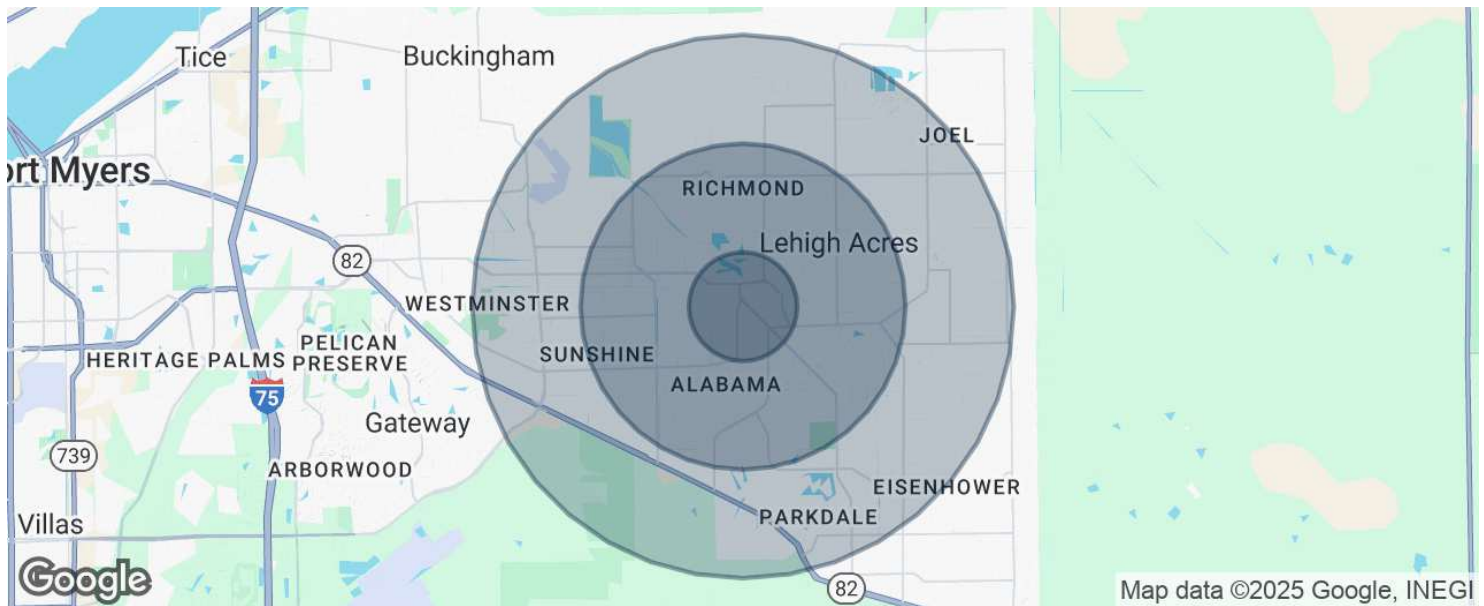
We obtained the information above from sources we believe to be reliable. However, we have not verified its accuracy and make no guarantee, warranty or representation about it. It is submitted subject to the possibility of errors, omissions, change of price, rental or other conditions, prior sale, lease or financing, or withdrawal without notice. We include projections, opinions, assumptions or estimates for example only, and they may not represent current or future performance of the property. You and your tax and legal advisors should conduct your own investigation of the property and transaction.

# Freestanding! 7,245 SF - Fenced!

## 270/272 BETH STACEY BLVD, LEHIGH ACRES, FL 33936

# FOR LEASE

## Industrial Property



POPULATION	1 MILE	3 MILES	5 MILES
Total population	6,082	36,068	74,993
Median age	39.5	36.7	34.8
Median age (Male)	33.1	33.4	32.4
Median age (Female)	42.7	39.2	36.7
HOUSEHOLDS & INCOME	1 MILE	3 MILES	5 MILES
Total households	2,148	12,255	24,520
# of persons per HH	2.8	2.9	3.1
Average HH income	\$46,899	\$51,754	\$55,505
Average house value	\$146,592	\$175,483	\$202,663

\* Demographic data derived from 2020 ACS - US Census



**Theresa Blauch-Mitchell, CCIM**  
1922 VICTORIA AVE STE C FT MYERS, FL 33901  
239.265.2628  
theresa@ccim.net  
FL #BK3202944

Each office independently owned and operated.

We obtained the information above from sources we believe to be reliable. However, we have not verified its accuracy and make no guarantee, warranty or representation about it. It is submitted subject to the possibility of errors, omissions, change of price, rental or other conditions, prior sale, lease or financing, or withdrawal without notice. We include projections, opinions, assumptions or estimates for example only, and they may not represent current or future performance of the property. You and your tax and legal advisors should conduct your own investigation of the property and transaction.

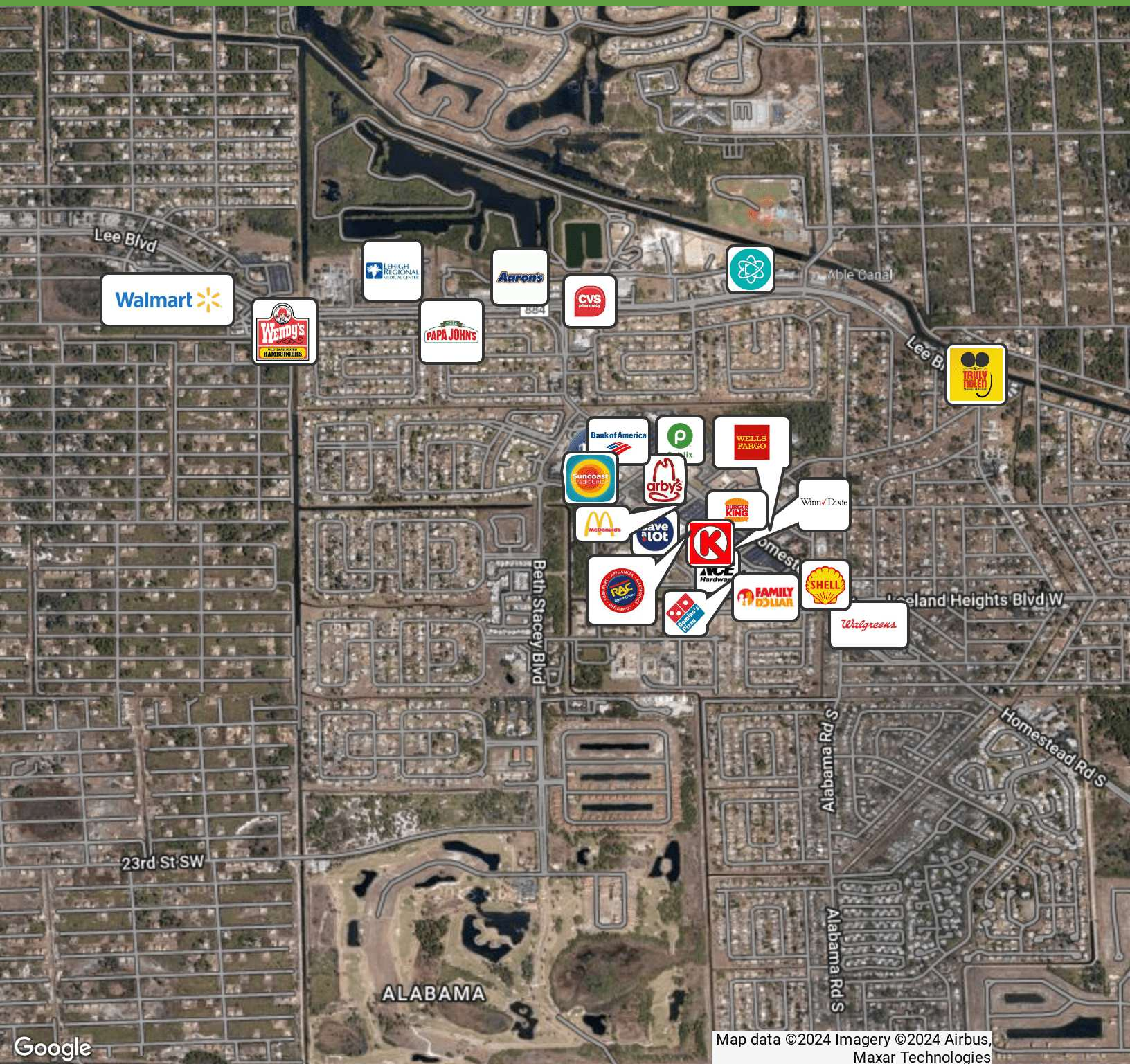


# Freestanding! 7,245 SF - Fenced!

270/272 BETH STACEY BLVD, LEHIGH ACRES, FL 33936

# FOR LEASE

Industrial Property



**Theresa Blauch-Mitchell, CCIM**  
1922 VICTORIA AVE STE C FT MYERS, FL 33901  
239.265.2628  
theresa@ccim.net  
FL #BK3202944

Each office independently owned and operated.

We obtained the information above from sources we believe to be reliable. However, we have not verified its accuracy and make no guarantee, warranty or representation about it. It is submitted subject to the possibility of errors, omissions, change of price, rental or other conditions, prior sale, lease or financing, or withdrawal without notice. We include projections, opinions, assumptions or estimates for example only, and they may not represent current or future performance of the property. You and your tax and legal advisors should conduct your own investigation of the property and transaction.

[www.SperryCGA.com](http://www.SperryCGA.com)