



**COLDWELL BANKER
COMMERCIAL**

**PRIME
PROPERTIES**

FOR LEASE

1601 Riverfront Dr. Unit 101

Professional Office Suite



Unit 101 – 3,018 SF

\$5,550/MO + NNN

VIDEO TOUR



Mike Foster, CCIM | mfooster@cbcwest.com
Coldwell Banker Commercial Prime Properties

Direct: 970-244-6602
Mobile: 970-433-8374

131 N. 6th, St., Suite 200
Grand Junction, CO 81501

CBCWEST.COM

This information has been secured from sources we believe to be reliable, but we make no representations or warranties, expressed or implied, as to the accuracy of the information. References to square footage or age are approximate. Buyer must verify the information and bears all risk for any inaccuracies.



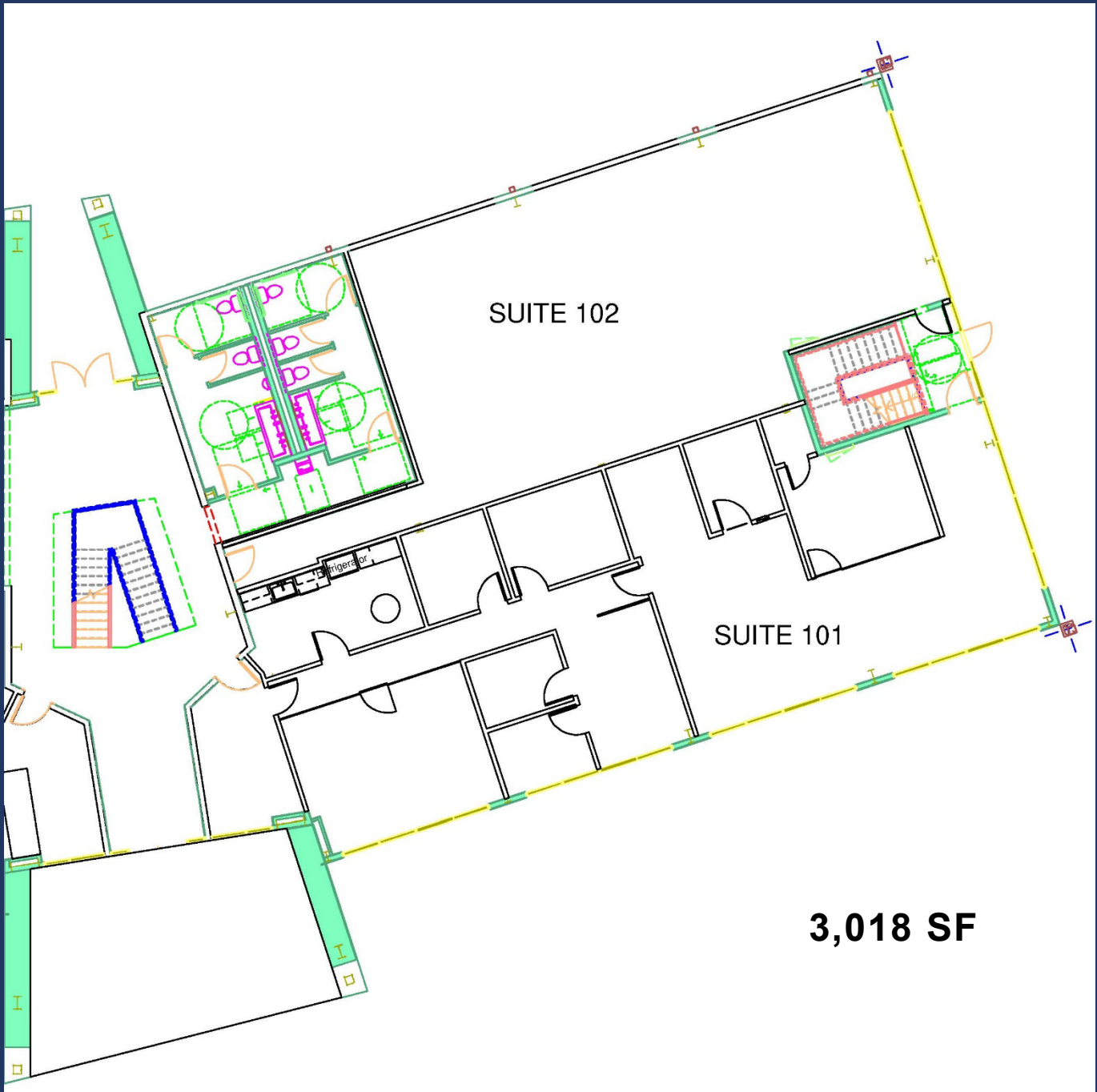
**COLDWELL BANKER
COMMERCIAL**

**PRIME
PROPERTIES**

FOR LEASE

1601 Riverfront Dr. Unit 101

Unit 101 - \$5,550/MO + NNN



Mike Foster, CCIM | mfoster@cbcwest.com
Coldwell Banker Commercial Prime Properties

Direct: 970-244-6602
Mobile: 970-433-8374

131 N. 6th, St., Suite 200
Grand Junction, CO 81501

CBCWEST.COM

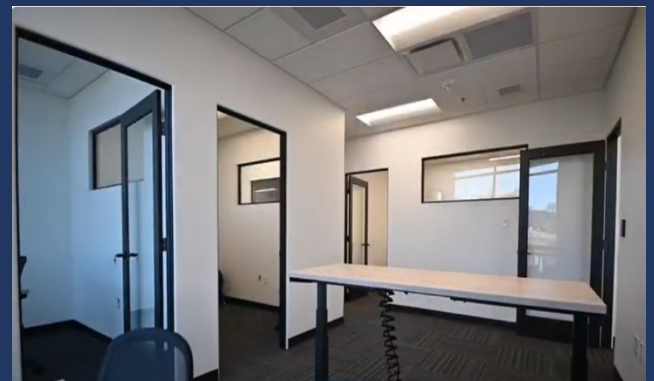
This information has been secured from sources we believe to be reliable, but we make no representations or warranties, expressed or implied, as to the accuracy of the information. References to square footage or age are approximate. Buyer must verify the information and bears all risk for any inaccuracies.



**COLDWELL BANKER
COMMERCIAL**
PRIME
PROPERTIES

FOR LEASE

1601 Riverfront Dr. Unit 101



Mike Foster, CCIM | mfooster@cbwest.com
Coldwell Banker Commercial Prime Properties

Direct: 970-244-6602
Mobile: 970-433-8374

131 N. 6th, St., Suite 200
Grand Junction, CO 81501

CBCWEST.COM

This information has been secured from sources we believe to be reliable, but we make no representations or warranties, expressed or implied, as to the accuracy of the information. References to square footage or age are approximate. Buyer must verify the information and bears all risk for any inaccuracies.