



RETAIL / OFFICE SPACE FOR LEASE

894 FL-436 Casselberry, Florida 32707

Contact: Trey Gravenstein
Vice President of Brokerage Services

E: Trey@FCPG.com
P: 407.872.0177 ext 119

Contact: Michael Castrilli
Vice President of Brokerage Services

E: Michael@FCPG.com
P: 407.872.0177 ext 130

For Lease: \$24.00 / SF, NNN

Available: \pm 2,800 SF



**2ND GENERATION
BANK SITE**

Former BB&T Branch Bank with full interior bank amenities and 2 drive-thru teller lanes and 1 ATM drive thru lane

Situated on FL-436 with exceptional traffic count: 72,500 AADT

Well positioned outparcel to Ollie's/ Pet Supermarket / Dollar General Shopping Center

Direct street frontage with over 100' on busy FL-436

Next to National outparcel tenants Buffalo Wild Wings and Dunkin Donuts

Large marquee sign pole available

DEMOGRAPHICS

2025



Total Population



Total Households



Average HH Income

5 Mins

15,814

6,816

\$89,349

10 Mins

105,806

46,605

\$97,944

15 Mins

295,254

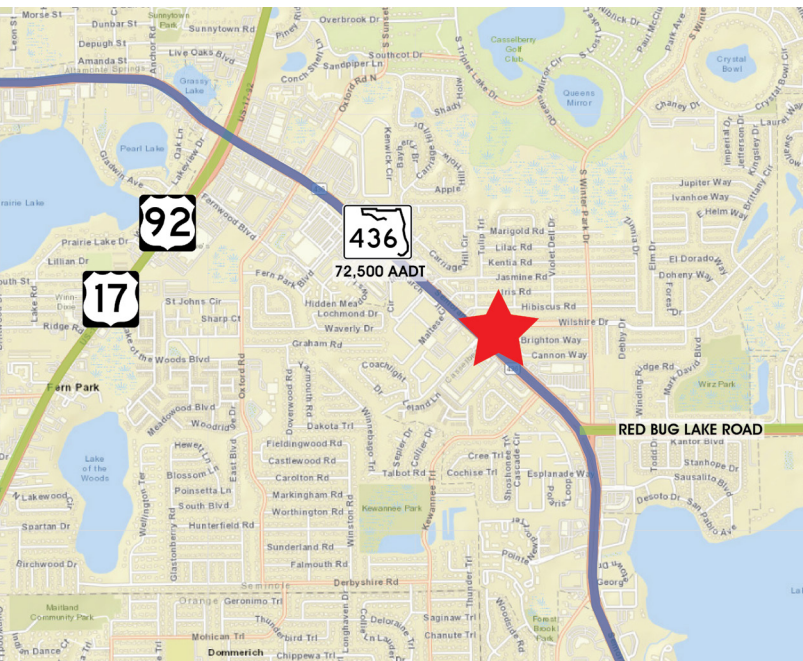
125,744

\$108,859

615 E. Colonial Dr., Orlando, FL 32803 Phone: 407.872.0209 www.FCPG.com

Information furnished regarding the subject property is believed to be accurate, but no guarantee or representation is made. References to square footage are approximate. This offering is subject to errors, omissions, prior sale or lease or withdrawal without notice. ©2025 First Capital Property Group, Licensed Real Estate Brokers & Managers.

LOCATION



JOIN THESE NEIGHBORING RETAILERS

DUNKIN'

DOLLAR GENERAL

OLLIE'S OUTLET
Bargain
"GOOD STUFF CHEAP"

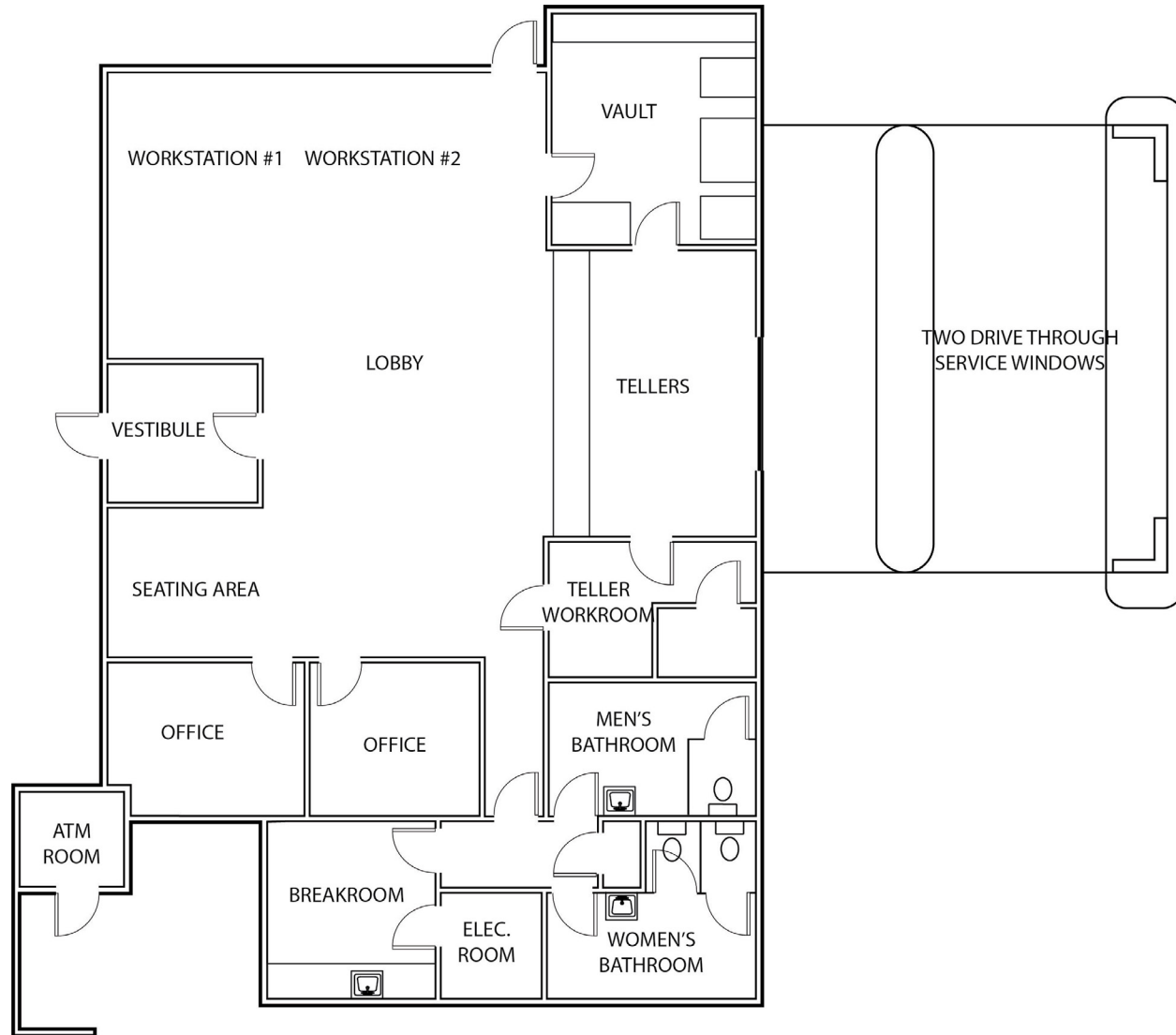


**BUFFALO
WILD WINGS**

PET SUPERMARKET

Walgreens

FLOORPLAN



■ 615 E. Colonial Dr., Orlando, FL 32803 ■ Phone: 407.872.0209 ■ www.FCPG.com ■

Information furnished regarding the subject property is believed to be accurate, but no guarantee or representation is made. References to square footage are approximate. This offering is subject to errors, omissions, prior sale or lease or withdrawal without notice. ©2025 First Capital Property Group, Licensed Real Estate Brokers & Managers.



**FIRST CAPITAL
Property Group**

Commercial Real Estate Services



■ 615 E. Colonial Dr., Orlando, FL 32803 ■ Phone: 407.872.0209 ■ www.FCPG.com ■

Information furnished regarding the subject property is believed to be accurate, but no guarantee or representation is made. References to square footage are approximate. This offering is subject to errors, omissions, prior sale or lease or withdrawal without notice. ©2025 First Capital Property Group, Licensed Real Estate Brokers & Managers.

