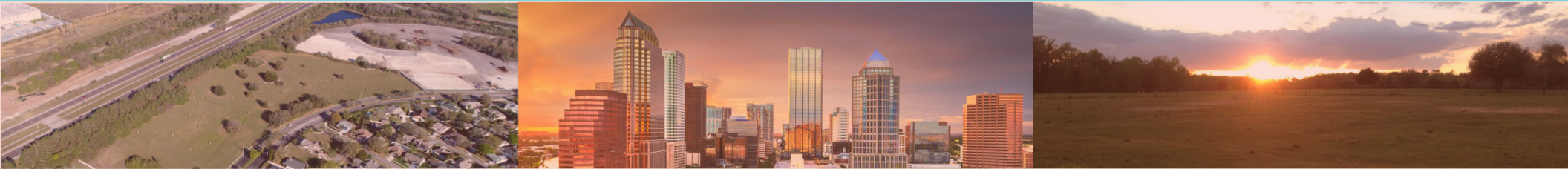


We know this land.



Eshenbaugh
LAND COMPANY

The Dirt Dog



304 S. WILLOW AVENUE

TAMPA, FL 33606

813.287.8787

www.thedirtdog.com

Property Description



PROPERTY DESCRIPTION

The opportunity is to purchase approximately 28 acres located in Aripeka (Hernando County). The property is heavily wooded and boasts significant frontage on Indian Bay Road (1,918 feet), ensuring easy accessibility. It is estimated to have approximately 15.37 acres of wetlands. Water is to the property, and sewer is located 1.6 miles down Osowaw Blvd.

The parcels are zoned AG (Agriculture) with a future land use of Conservation, offering a variety of potential uses. These include opportunities for recreational activities such as hunting and hiking, building private residences, or preserving the natural landscape.

LOCATION DESCRIPTION

The property is located at 1490 Indian Bay Road in Aripeka in southern Hernando County. Aripeka is a peaceful, historic town on Florida's Nature Coast, nestled between the Gulf of Mexico, marshes, and natural springs. The town's tranquil, laid-back atmosphere is reflected in its scenic streets, where fishing from bridges and enjoying the surrounding natural beauty are common activities.

The site is two miles away from US Highway 19, where local shops, medical, and restaurants are located. Given its close proximity to the highway, it is commutable to nearby cities: Weeki Wachee (12 minutes), Spring Hill (20 minutes), Brooksville (35 minutes), Tarpon Springs (40 minutes), Homosassa (40 minutes), Crystal River (50 minutes), and Tampa (1 hour). Additionally, the property can easily access nearby recreational destinations, including Weeki Wachee Preserve, SunWest Park, Pine Island Park, and Cabot Citrus Farms.

SIZE

27.9 acres

ZONING AND FUTURE LAND USE

Zoning: AG (Agriculture)
Future Land Use: Conservation

PRICE

\$200,000

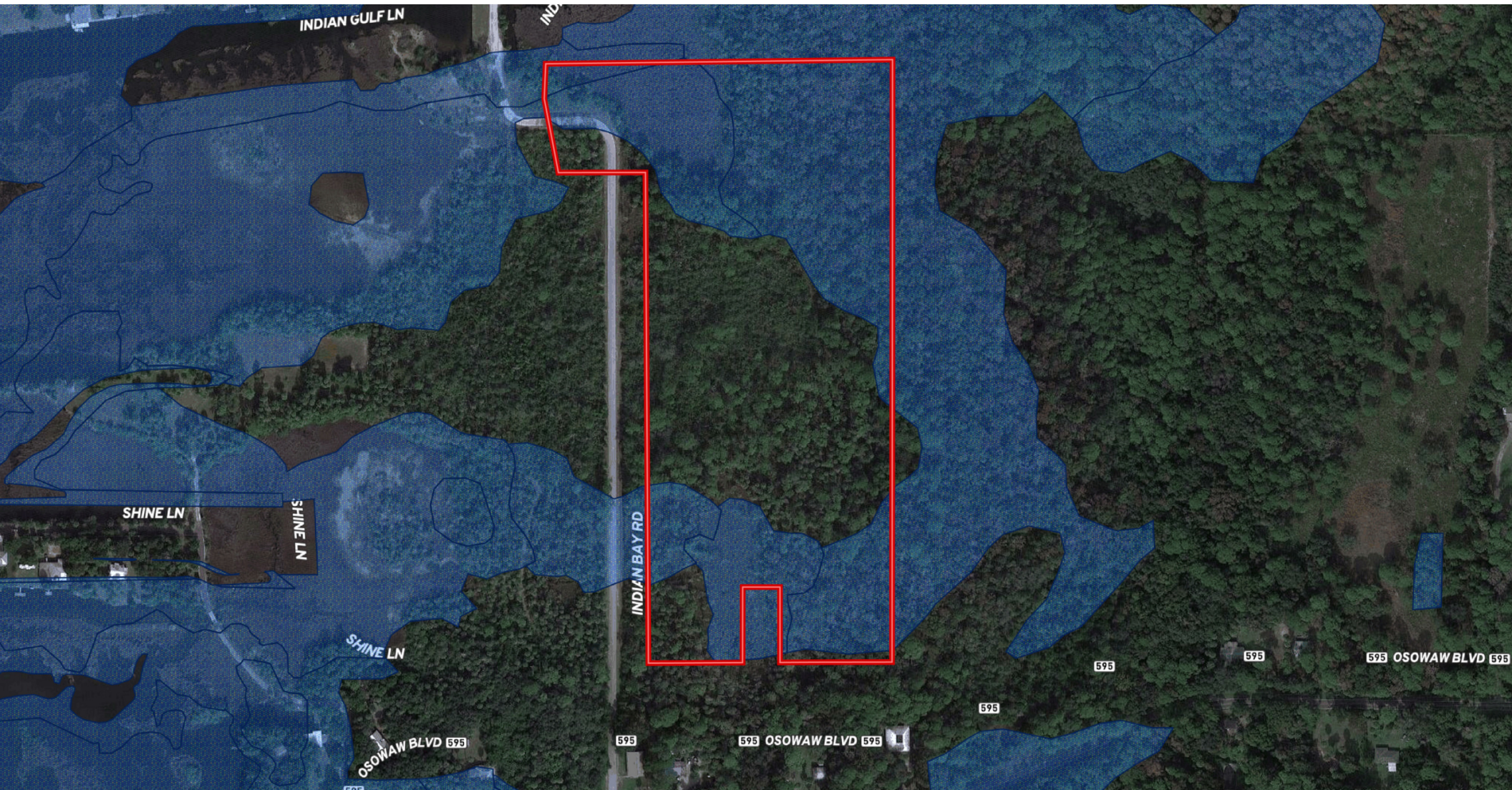
Aerial



Additional Photos



Wetlands Map



Demographics Map & Report

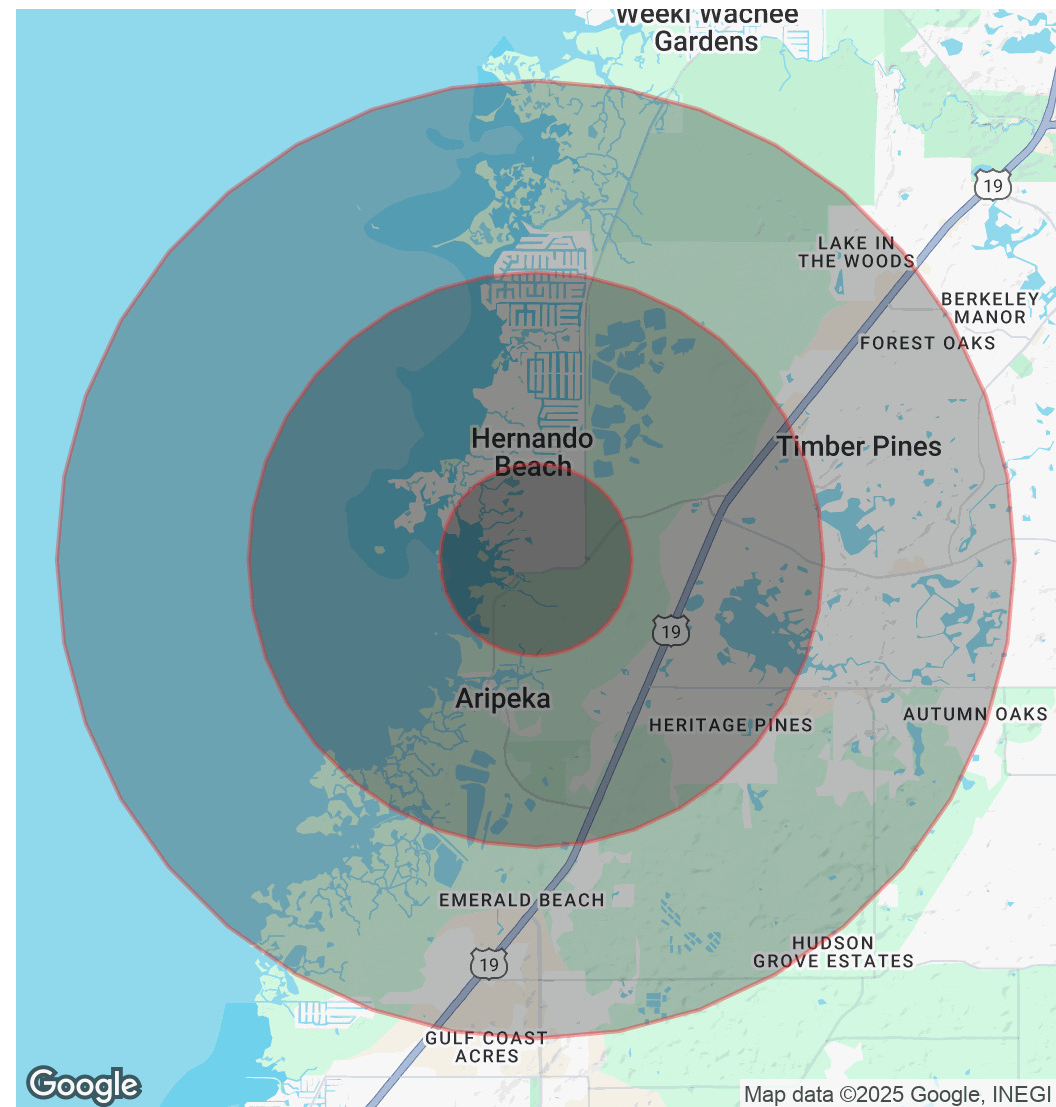
POPULATION

	1 MILE	3 MILES	5 MILES
Total Population	311	11,669	45,048
Average Age	55	53	51
Average Age (Male)	56	53	50
Average Age (Female)	55	53	52

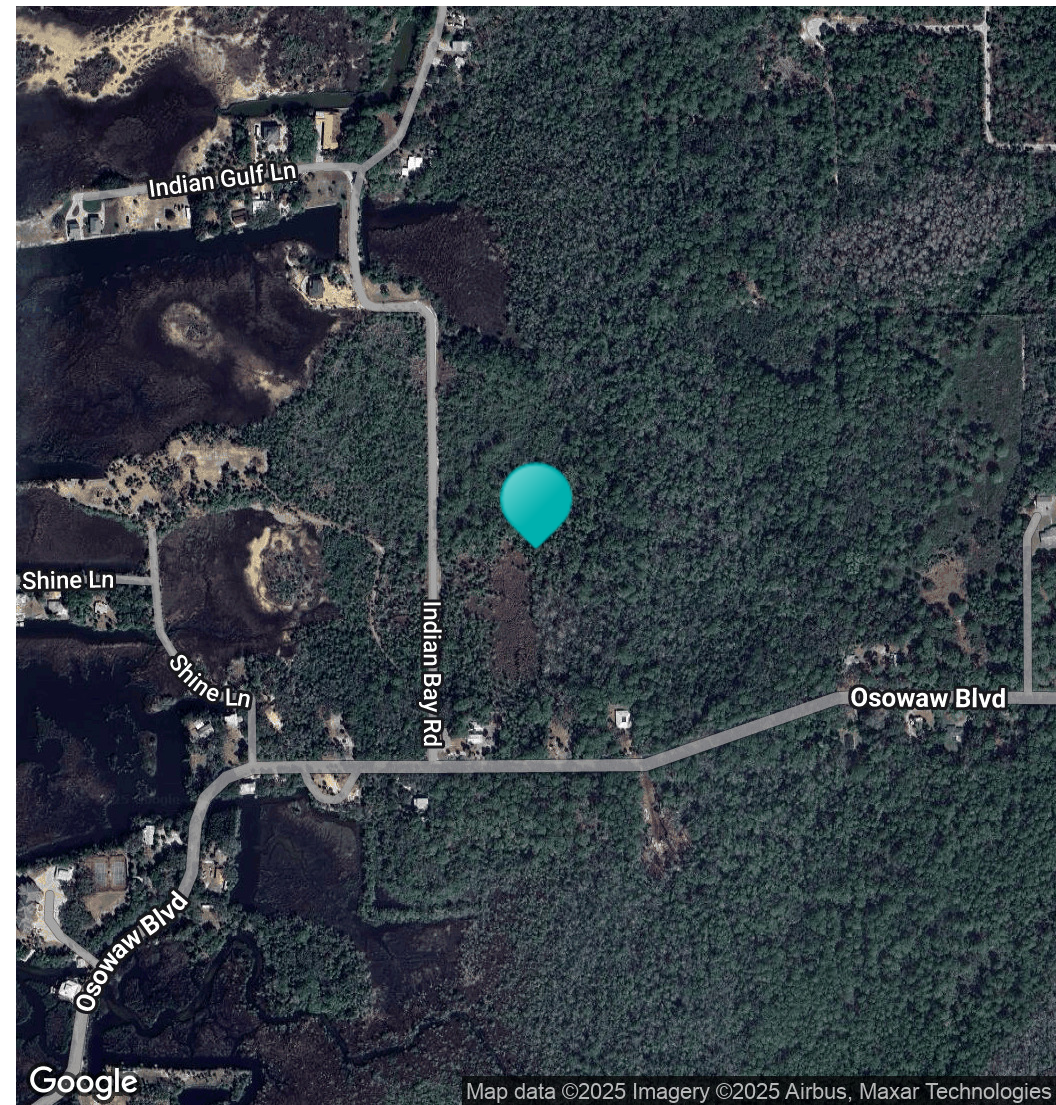
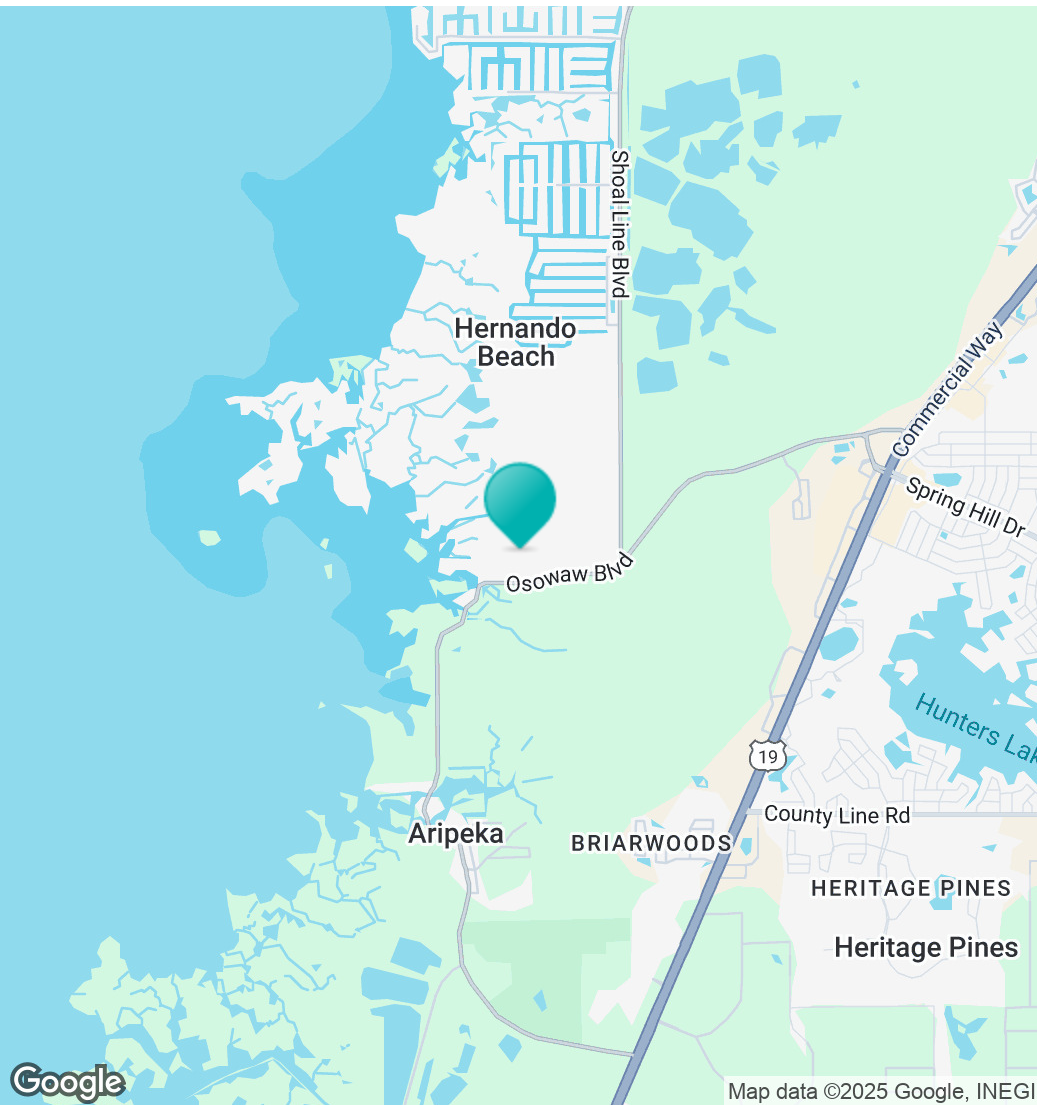
HOUSEHOLDS & INCOME

	1 MILE	3 MILES	5 MILES
Total Households	152	5,255	20,194
# of Persons per HH	2	2.2	2.2
Average HH Income	\$95,120	\$71,999	\$69,098
Average House Value	\$336,978	\$283,923	\$263,678

Demographics data derived from AlphaMap



Location Map



Confidentiality & Disclaimer

All materials and information received or derived from Eshenbaugh Land Company, LLC its directors, officers, agents, advisors, affiliates and/or any third party sources are provided without representation or warranty as to completeness, veracity, or accuracy, condition of the property, compliance or lack of compliance with applicable governmental requirements, developability or suitability, financial performance of the property, projected financial performance of the property for any party's intended use or any and all other matters.

Neither Eshenbaugh Land Company, LLC its directors, officers, agents, advisors, or affiliates makes any representation or warranty, express or implied, as to accuracy or completeness of the any materials or information provided, derived, or received. Materials and information from any source, whether written or verbal, that may be furnished for review are not a substitute for a party's active conduct of its own due diligence to determine these and other matters of significance to such party. Eshenbaugh Land Company, LLC will not investigate or verify any such matters or conduct due diligence for a party unless otherwise agreed in writing.

EACH PARTY SHALL CONDUCT ITS OWN INDEPENDENT INVESTIGATION AND DUE DILIGENCE.

Any party contemplating or under contract or in escrow for a transaction is urged to verify all information and to conduct their own inspections and investigations including through appropriate third party independent professionals selected by such party. All financial data should be verified by the party including by obtaining and reading applicable documents and reports and consulting appropriate independent professionals. Eshenbaugh Land Company, LLC makes no warranties and/or representations

regarding the veracity, completeness, or relevance of any financial data or assumptions. Eshenbaugh Land Company, LLC does not serve as a financial advisor to any party regarding any proposed transaction. All data and assumptions regarding financial performance, including that used for financial modeling purposes, may differ from actual data or performance. Any estimates of market rents and/or projected rents that may be provided to a party do not necessarily mean that rents can be established at or increased to that level. Parties must evaluate any applicable contractual and governmental limitations as well as market conditions, vacancy factors and other issues in order to determine rents from or for the property.

Legal questions should be discussed by the party with an attorney. Tax questions should be discussed by the party with a certified public accountant or tax attorney. Title questions should be discussed by the party with a title officer or attorney. Questions regarding the condition of the property and whether the property complies with applicable governmental requirements should be discussed by the party with appropriate engineers, architects, contractors, other consultants and governmental agencies. All properties and services are marketed by Eshenbaugh Land Company, LLC in compliance with all applicable fair housing and equal opportunity laws.

Eshenbaugh Land Company is a licensed real estate brokerage firm in Florida and William A. Eshenbaugh is the broker of record.