



**GENTRY**  
COMMERCIAL REAL ESTATE, INC.



**540-542 OAKLEY AVENUE**

LYNCHBURG, VIRGINIA 24501



# HIGHLIGHTS

- TWO ADJOINING BUILDINGS CONSISTING OF A TOTAL OF 5,889 SQUARE FEET
- MOSTLY OPEN SPACE WITH 4 OFFICES AND 4 BATHROOMS
- 14' DRIVE-IN DOOR ON FRONT OF BUILDING AND 10' LOAD HEIGHT DOOR ON BACK OF BUILDING
- +/- 18 ON-SITE SPACES AND ON-STREET PARKING
- COVERED LOADING/PARKING AREA ON BACK OF BUILDING
- ENTRANCE ON OAKLEY AVENUE WITH ALLEY ACCESS TO NORMA STREET FROM THE REAR OF THE PROPERTY
- CONVENIENT LOCATION WITH EASY ACCESS TO LAKESIDE DRIVE/ U.S. 221, U.S. 29 EXPRESSWAY





# PROPERTY DETAILS

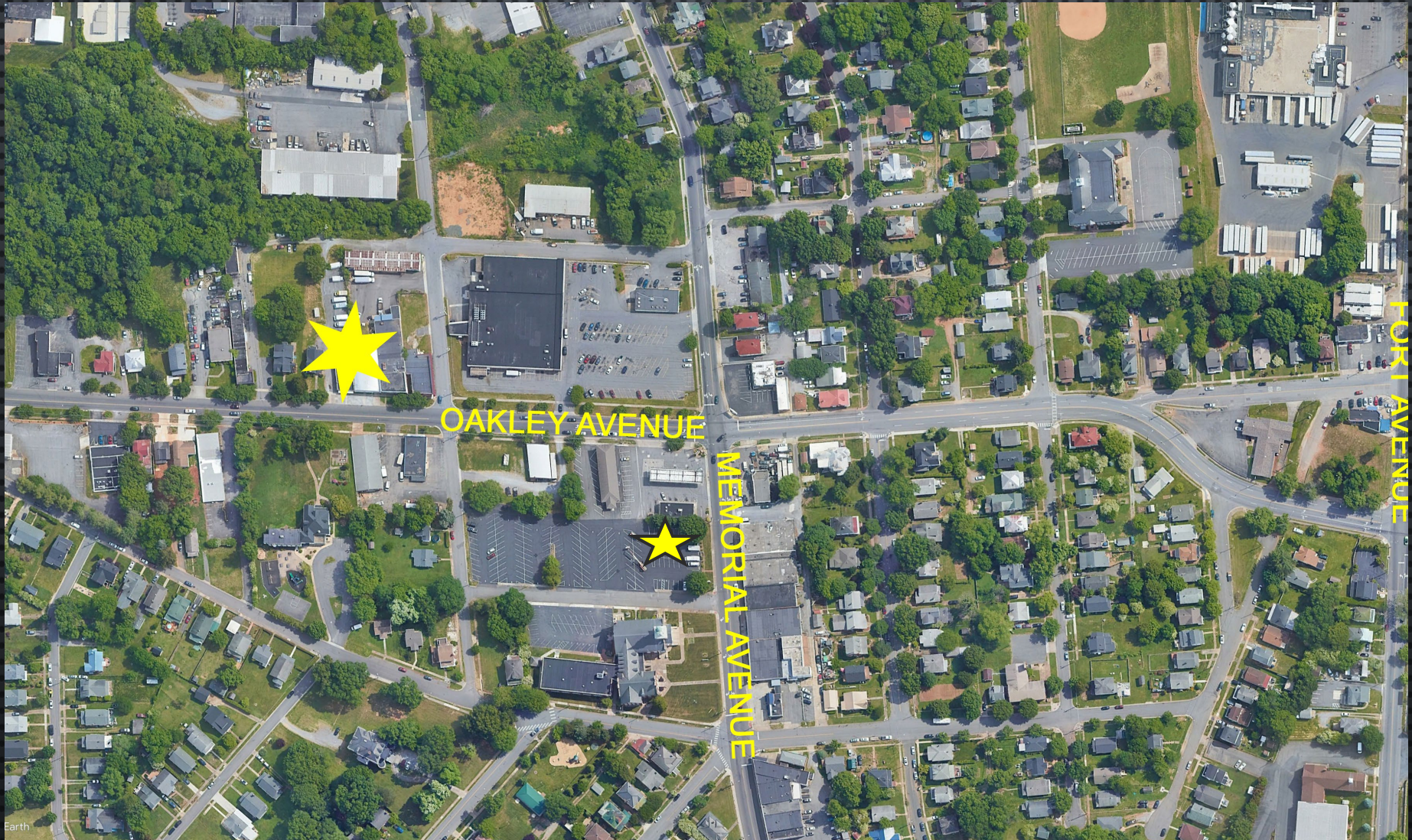
540-542 Oakley Avenue  
Lynchburg, VA 24501

Building Area..... +/- 5,889 SF  
Parcel Size..... +/- 0.43 AC  
Year(s) Built..... 1947 & 1949  
Water/Sewer..... City of Lynchburg  
Zoning..... B-5, General Business  
Assessed Value..... \$254,900  
  
Sale Price..... \$274,900





# AERIAL OVERVIEW





# INTERIOR PHOTOS





EXCLUSIVELY LISTED BY:

**CHRISTOPHER R. GENTRY, SIOR**  
PRESIDENT

GENTRY COMMERCIAL REAL ESTATE, INC.

[cgentry@gcrei.com](mailto:cgentry@gcrei.com)

434.485.8901 Direct

434.485.8900 Main



**GENTRY**  
COMMERCIAL REAL ESTATE, INC.

1605 Enterprise Drive, Suite A  
Lynchburg, VA 24502

[www.gcrei.com](http://www.gcrei.com)

This information is provided for the sole purpose of allowing a potential investor to evaluate whether there is interest in proceeding with further discussions regarding a possible purchase of or investment in the subject property (the "Property"). The potential investor is urged to perform its own examination and inspection of the Property and information relating to same, and shall rely solely on such examination and investigation and not on this offering memorandum or any materials, statements or information contained herein or otherwise provided. Neither Gentry Commercial Real Estate, Inc., its members, managers, officers, employees or agents ("Broker"), nor Owner, its partners or property manager, make any representations or warranties, whether express or implied, by operation of law or otherwise, with respect to this offering memorandum or the Property or any materials, statements (including financial statements and projections) or information contained herein or relating thereto, or as to the accuracy or completeness of such materials, statements or information, or as to the condition, quality or fitness of the Property, or assumes any responsibility with respect thereto. Such materials, statements and information have in many circumstances been obtained from outside sources, and have not been tested or verified. Projections, in particular, are based on various assumptions and subjective determinations as to which no guaranty or assurance can be given. This offering memorandum is provided subject to errors, omissions, prior sale or lease, change of price or terms and other changes to the materials, statements and information contained herein or relating to the Property, and is subject to withdrawal, all without notice. Buyers, in conjunction with their financial and legal advisors, should conduct a thorough investigation of the property to determine the suitability of the property for their needs. By acknowledging your receipt of this offering memorandum, you agree that all information contained herein is confidential, you will keep all materials in the strictest of confidence and will not disclose or permit anyone else to disclose this offering memorandum or its contents in any manner which is detrimental to the interests of the Owner.

Gentry Commercial Real Estate, Inc. is licensed in the State of Virginia with a principal office address of 1605 Enterprise Drive, Suite A, Lynchburg, VA 24502.