



INDUSTRIAL SPACE FOR LEASE

305 Ryder Lane, Casselberry, FL 32707

Contact: Jesse King
 Sales & Leasing Associate

E: Jesse@FCPG.com
 P: 407.872.0177 ext. 136

Contact: Ben Kuykendall
 Senior Sales & Leasing Associate

E: Ben@FCPG.com
 P: 407.872.0177 ext. 131

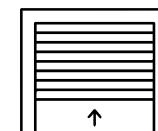
Contact: Dan Van Nada, CCIM
 Vice President of Brokerage Services

E: Dan@FCPG.com
 P: 407.872.0177 ext. 117

For Lease: \$18.00 / SF, MG

Suites 1307-1313: ±2,400 SF

Immediate Availability



**TWO 12' x 10'
 GRADE LEVEL
 ROLL-UP DOORS**

± 2,400 SF industrial space featuring two 12' x 10' grade level roll-up doors, 18' - 20' clear height, and two connected office units offering a total of 480 SF and 2 restrooms

Conveniently located 1 min north of SR 436, 2 mins from 17-92, 4 mins from Ronald Reagan Blvd, and 8 mins from I-4

Located in Anchor Rd. Commerce Center, an active hub of established local small businesses

Existing HVAC infrastructure in warehouse space can be repaired to provide 100% HVAC warehouse space

DEMOGRAPHICS

2025



Total Population



Total Households



Average HH Income

1 Mile

7,070

3,166

\$82,067

3 Miles

95,396

40,962

\$97,663

5 Miles

246,204

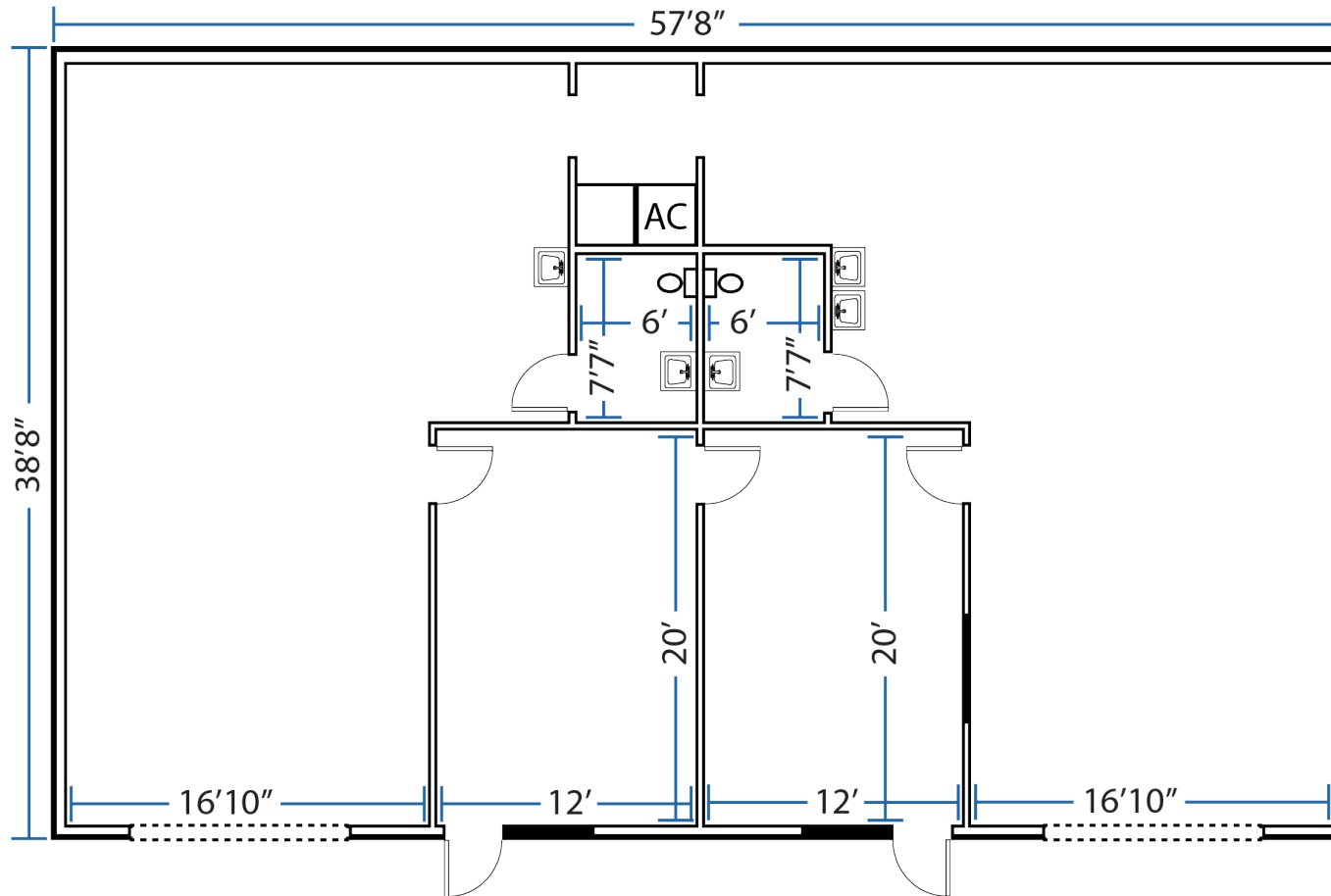
104,950

\$109,421

615 E. Colonial Dr., Orlando, FL 32803 Phone: 407.872.0209 Fax: 407.426.8542

Information furnished regarding the subject property is believed to be accurate, but no guarantee or representation is made. References to square footage are approximate. This offering is subject to errors, omissions, prior sale or lease or withdrawal without notice. ©2025 First Capital Property Group, Licensed Real Estate Brokers & Managers.

FLOORPLAN



WAREHOUSE

Clear Height: 18' - 20',
with 9' ceiling height in
the office

Roll-Up Doors: 12' x 10'



■ 615 E. Colonial Dr., Orlando, FL 32803 ■ Phone: 407.872.0209 ■ Fax: 407.426.8542 ■

Information furnished regarding the subject property is believed to be accurate, but no guarantee or representation is made. References to square footage are approximate. This offering is subject to errors, omissions, prior sale or lease or withdrawal without notice. ©2025 First Capital Property Group, Licensed Real Estate Brokers & Managers.

IMAGES



■ 615 E. Colonial Dr., Orlando, FL 32803 ■ Phone: 407.872.0209 ■ Fax: 407.426.8542 ■

Information furnished regarding the subject property is believed to be accurate, but no guarantee or representation is made. References to square footage are approximate. This offering is subject to errors, omissions, prior sale or lease or withdrawal without notice. ©2025 First Capital Property Group, Licensed Real Estate Brokers & Managers.

THE NEIGHBORHOOD



■ 615 E. Colonial Dr., Orlando, FL 32803 ■ Phone: 407.872.0209 ■ Fax: 407.426.8542 ■

Information furnished regarding the subject property is believed to be accurate, but no guarantee or representation is made. References to square footage are approximate. This offering is subject to errors, omissions, prior sale or lease or withdrawal without notice. ©2025 First Capital Property Group, Licensed Real Estate Brokers & Managers.