

Highly Improved. Fantastic Amenities. Excellent Location.



MIZNER PLACE

Premier Destination for
Wellington Professionals

OFFICE | MEDICAL | RETAIL



Jason L. Sundook, SIOR
561 471 8000 | www.mhcreal.com

±745-5,100 SF
Class-A Office/Retail Space
in the Heart of Wellington



MIZNER PLACE | 12300 South Shore Boulevard, Wellington, Florida 33414

Property Features

- Highly improved and well-maintained building
- Lush landscaping and Mediterranean inspired architecture
- Signage, improvement allowance and covered parking available
- Located in the Winter Equestrian Capital of the World, with a mecca of programs, activities and events
- In the heart of Wellington, adjacent to Palm Beach Polo, and minutes from the Florida Turnpike, US-441, the Mall at Wellington Green, and more

For more information:

Jason L. Sundook, SIOR

Principal | jsundook@mhcreal.com

Key Features:



Mixed-use building with office, medical and retail space for lease



Signage opportunities



Ground-floor restaurant/retail space available

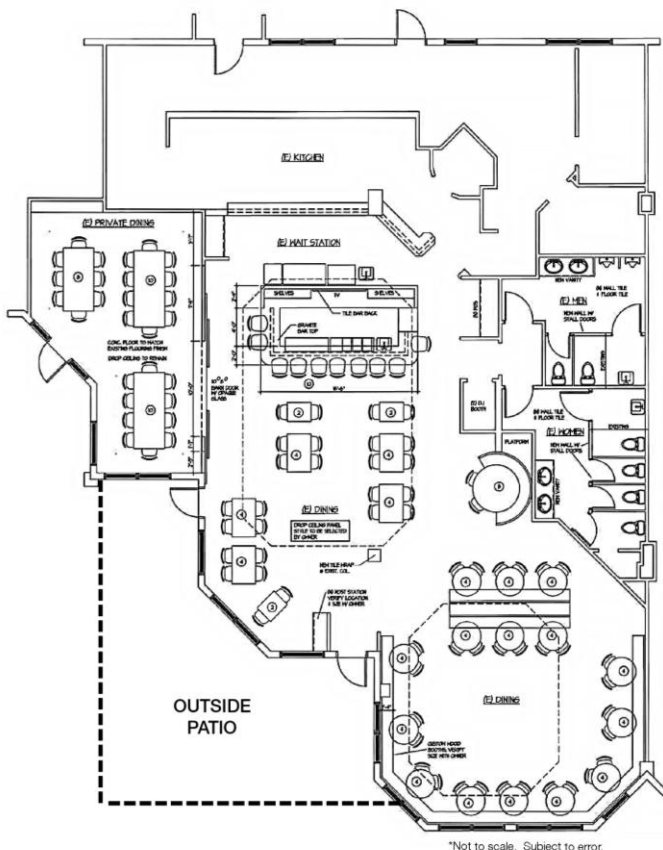
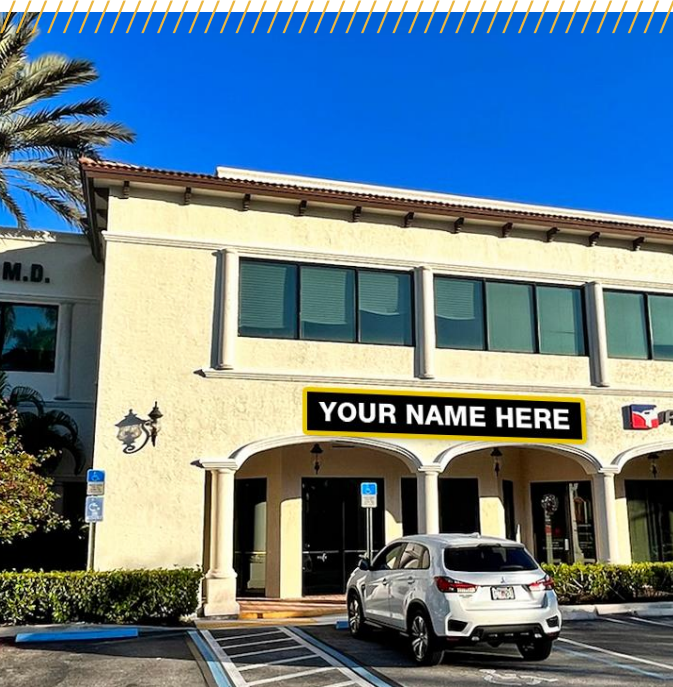


Equestrian community in the heart of Wellington



RESTAURANT, RETAIL AND BEYOND

Ground-Floor Space with Patio & Courtyard Views



Suite 110

±5,100 SF

- Ground-floor location with high visibility, direct entry, and signage opportunities
- 2nd generation restaurant space with the option to customize/divide space for your unique needs
- Covered patio & scenic courtyard with fountain views
- Highly desirable & strategic retail/restaurant location, with unbeatable demographics

EXPLORE THE POSSIBILITIES
561 471 8000

Jason L. Sundook, SIOR
jsundook@mhcreal.com

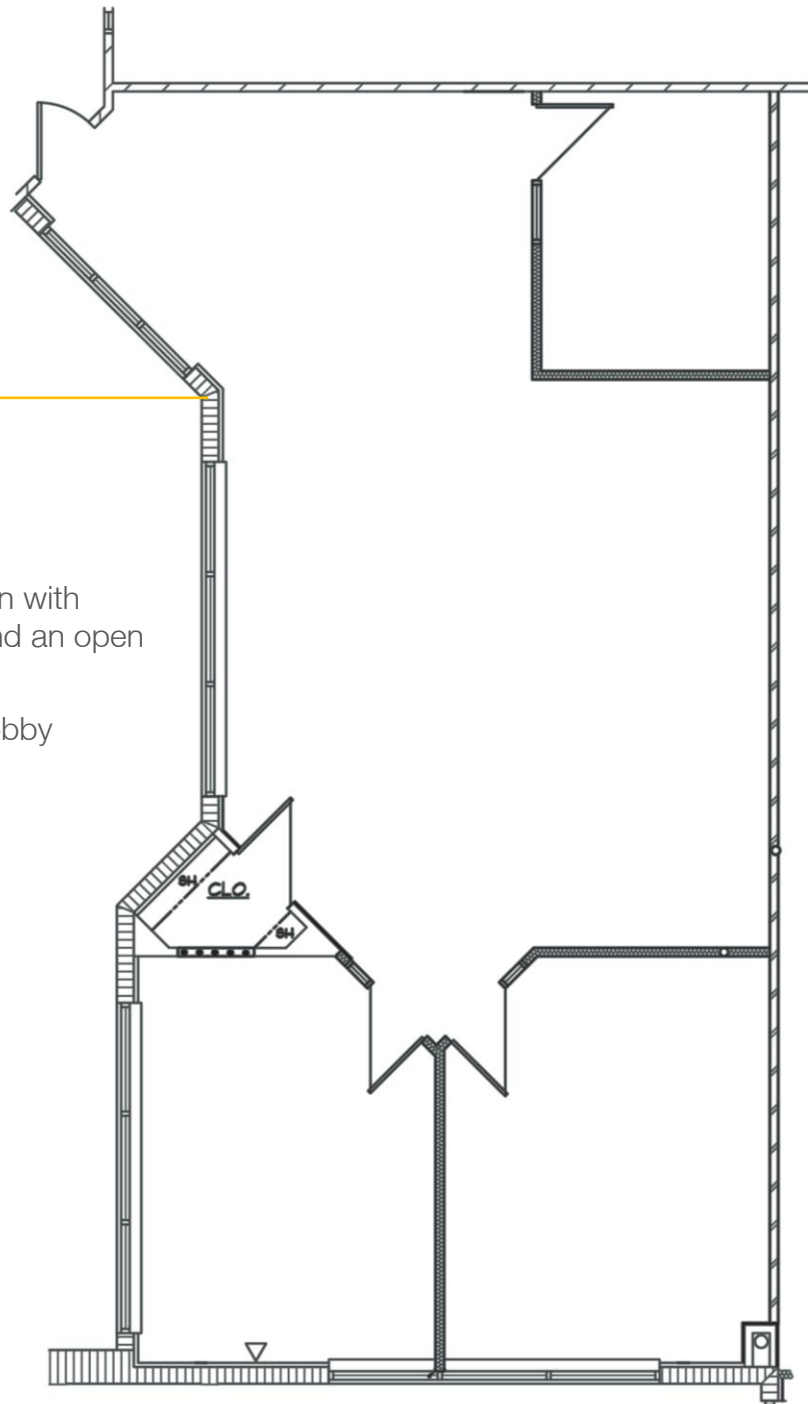
FOR LEASE: MIZNER PLACE, WELLINGTON, FL

Fantastic Workspace in an Equestrian Paradise

Suite 200

±1,512 SF

- Efficient floor plan with private offices and an open work area
- Direct elevator lobby exposure



*Not to scale. Subject to error.

EXPLORE THE POSSIBILITIES
561 471 8000

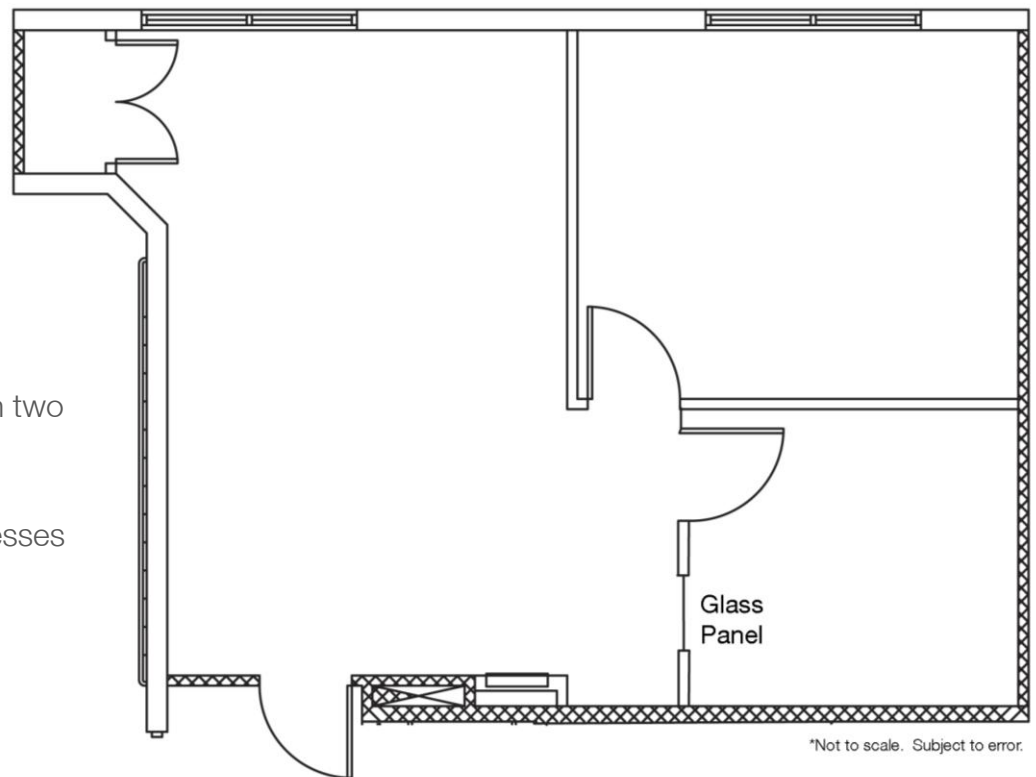
Jason L. Sundook, SIOR
jsundook@mhcreal.com

FOR LEASE: MIZNER PLACE, WELLINGTON, FL
Efficient Layout. Immediate Availability.

Suite 214

±745 SF

- Flexible floor plan with two private offices and a central workspace
- Great for small businesses or startups seeking efficient office space



LET'S SCHEDULE YOUR TOUR TODAY!

 **561 471 8000**