

# FOR LEASE

Up to ±3,169 SF Available | 1660 SW St Lucie West Blvd Port St Lucie, FL 34986



*Presented By:*

## NAI Southcoast

**Nikolaus M. Schroth, CCIM**

Principal | Broker Associate  
+1 772 286 6292  
nikschroth@naisouthcoast.com

**J. Jeffery Allman, Jr.**

Principal | Broker Associate  
+1 772 286 6292 c +1 772 283 1555  
jeff@naisouthcoast.com

**James McKinney**

Sales Associate  
+1 772 349 3414  
jamesmckinney@naisouthcoast.com

**FOR LEASE:**  
**\$23.50/SF NNN**  
**plus \$11.50 CAM**



## PROPERTY DETAILS

Property Address: 1660 SW St. Lucie West Blvd  
Port Saint Lucie, FL 34986

Available Size: Unit 3.3 - 3,169 SF  
Unit 3.2 - 2,021 SF

Zoning: GU-PSL1

Lot Size: 4.34 AC

Lease Rate: \$23.50/SF NNN  
(\$11.50 SF/YR CAM)

Lease Term: Negotiable

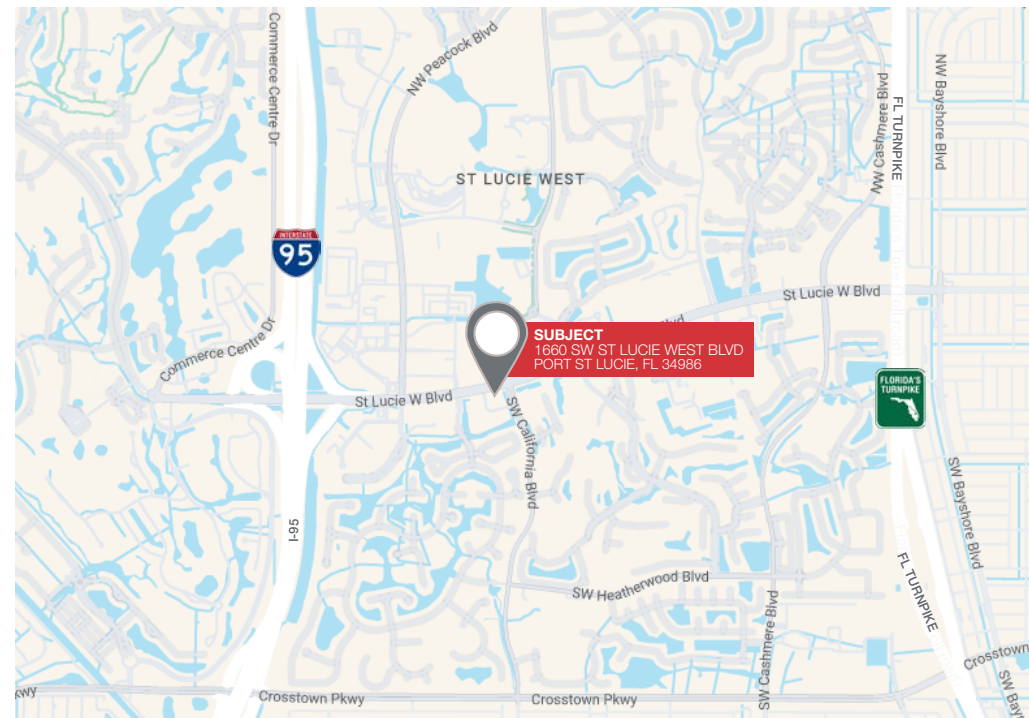
Signage: Marquee

## PROPERTY OVERVIEW

Professional and Medical office space located in a landmark building within the St. Lucie West neighborhood. Located at a signalized corner with marquee signage the TD Bank building is central to all of St. Lucie West and boasts convenient access to Interstate 95.

## AREA DEMOGRAPHICS

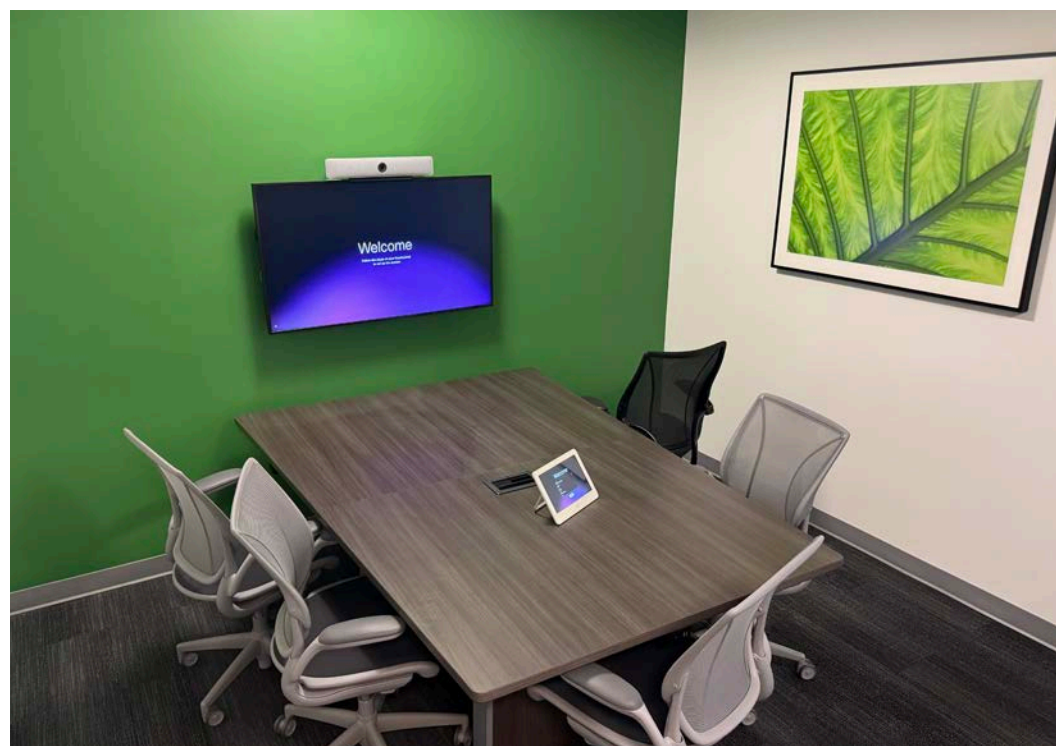
	Average Household Income	Median Age
1 Mile	\$110,110	63.8
3 Miles	\$117,922	47.9
5 Miles	\$113,802	46.2



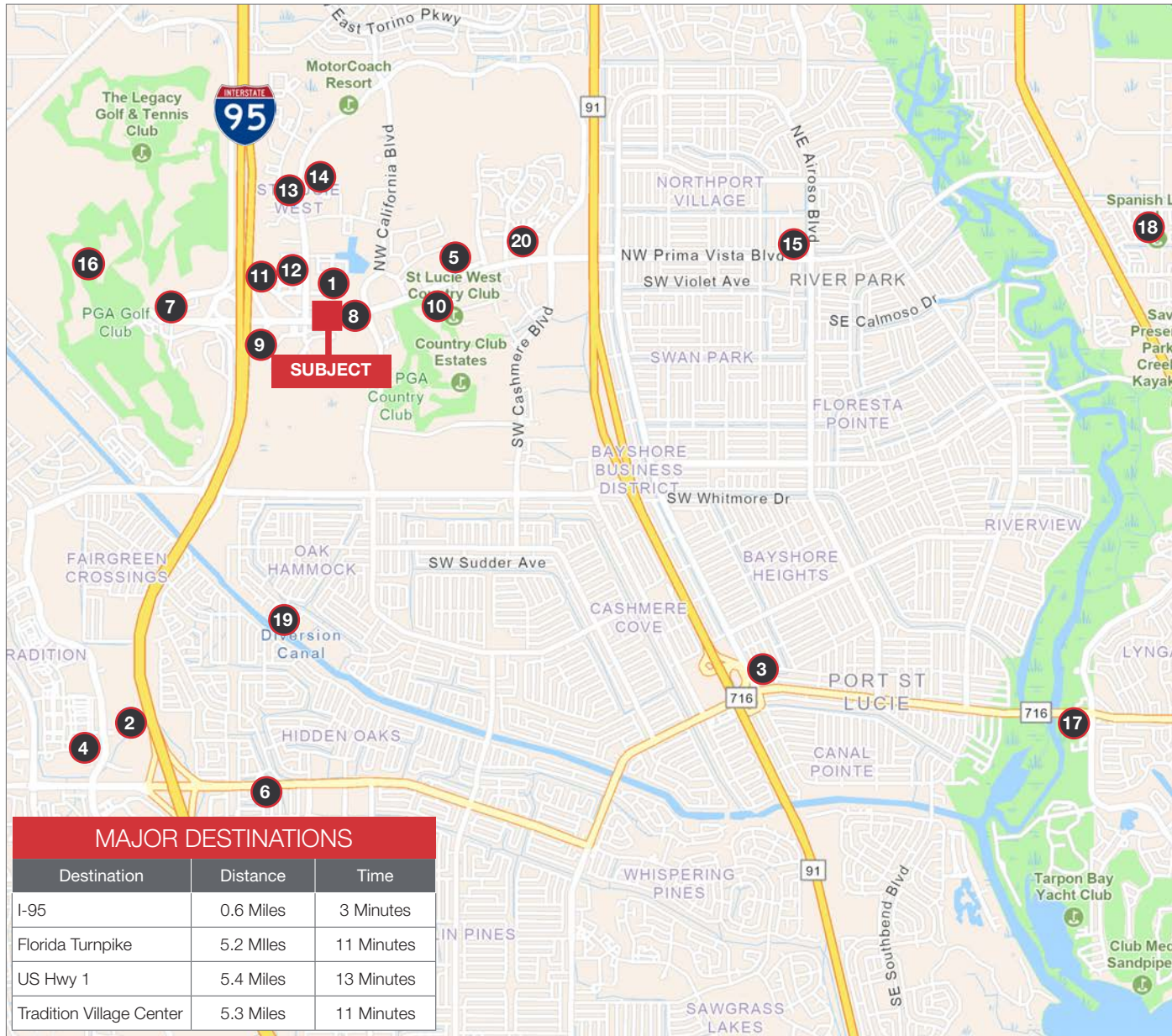












## POINTS OF INTEREST



### SHOPPING

	Destination	Distance	Time
1	Town Center at St Lucie West	0.5 Miles	3 Minutes
2	The Landing at Tradition	5.4 Miles	13 Minutes
3	Shoppes of Victoria Square	5.2 Miles	12 Minutes
4	Tradition Village Center	5.4 Miles	13 Minutes
5	Shoppes at St Lucie West	1.1 Miles	5 Minutes
6	Walmart Supercenter	11.7 Miles	29 Minutes

### DINING

	Destination	Distance	Time
7	Tutto Fresco	1.8 Miles	7 Minutes
8	Berry Fresh Cafe	0.5 Miles	3 Minutes
9	Carabba's	1.0 Miles	5 Minutes

### ENTERTAINMENT

	Destination	Distance	Time
10	St Lucie West Country Club	1.0 Miles	4 Minutes
11	AMC Port St Lucie 14	1.0 Miles	5 Minutes
12	Bowlero Port St Lucie	0.9 Miles	4 Minutes
13	Sky Zone Trampoline Park	1.3 Miles	6 Minutes
14	Clover Park	1.6 Miles	6 Minutes
15	Sportsman's Park	3.4 Miles	10 Minutes

### RECREATION

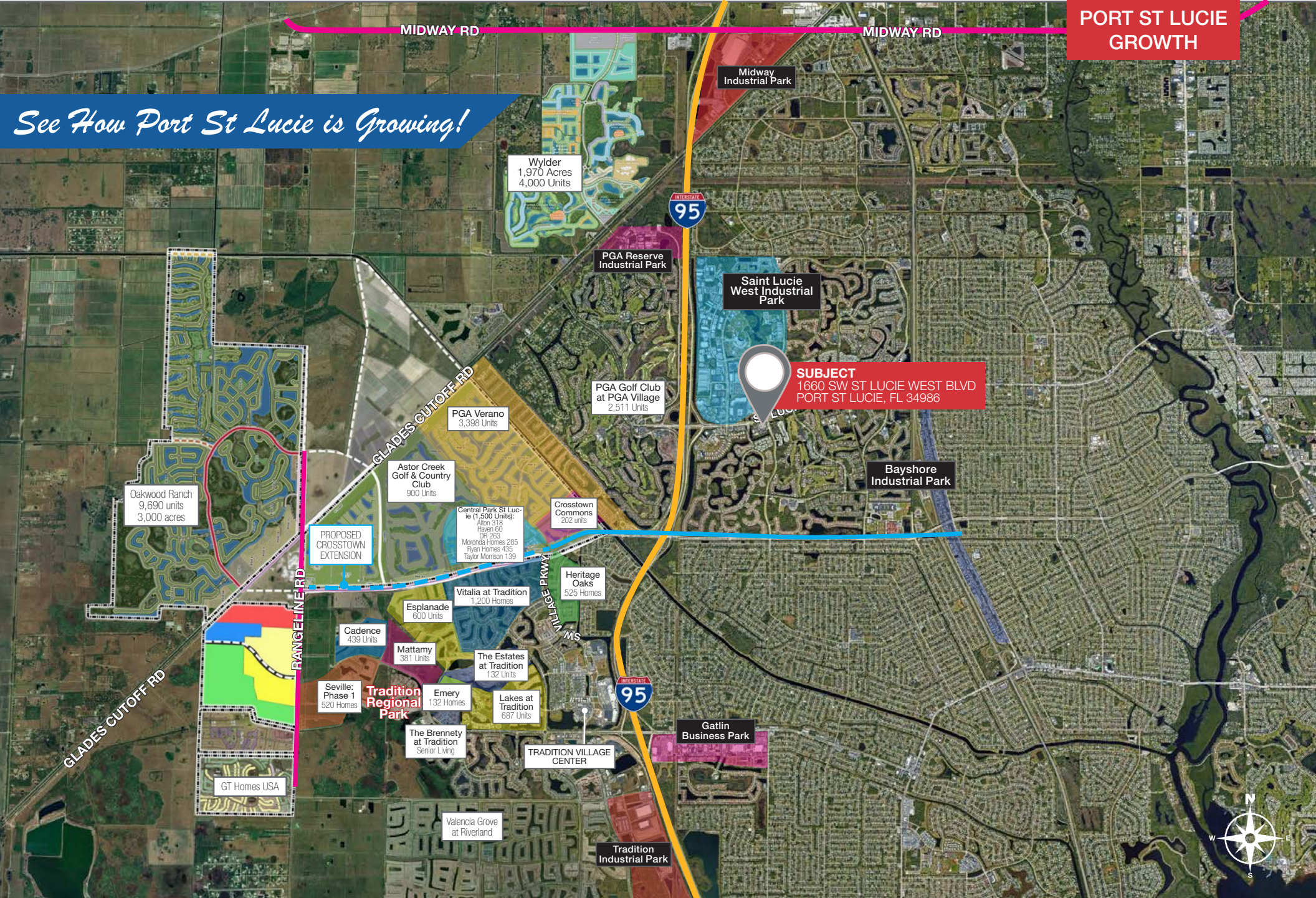
	Destination	Distance	Time
16	PGA Golf Village	1.9 Miles	7 Minutes
17	The Port District	7.9 Miles	19 Minutes
18	Spanish Lakes Golf Club	0.9 Miles	4 Minutes
19	Oak Hammock Park	3.0 Miles	9 Minutes

### HEALTHCARE

	Destination	Distance	Time
20	Cleveland Clinic Tradition Hosp.	xx Miles	xx Minutes



*See How Port St Lucie is Growing!*





## PROPERTY HIGHLIGHTS



### CLASS A OFFICE

Built in 2006, concrete construction, well-appointed tenant suites.



### EXCELLENT CONDITIONS

Institutionally maintained, ample parking, well kept tenant spaces.



### IDEAL LOCATION

Signalized corner location at the major intersection of California Boulevard and St. Lucie West Boulevard.



### CONVENIENT ACCESS

Less than 1 mile from I-95. Corner location for great access, good parking.



### LANDMARK BUILDING

Designed for financial, medical, or professional offices, offering modern finishes, parking, and convenient access to retail and dining.



### GREAT PARKING

Ample on-site parking provides convenience for both employees and clients.

## PROPERTY HIGHLIGHTS



1660 SW SAINT LUCIE WEST BLVD



1660 SW SAINT LUCIE WEST BLVD



LOOKING  
NORTH





LOOKING  
SOUTH



TREASURE COAST DERMATOLOGY  
*Specializing in the Treatment of Skin Cancer*

müv  
CANNABIS

SPIROS  
TAVERNA

**SUBJECT**  
1660 SW ST LUCIE WEST BLVD  
PORT ST LUCIE, FL 34986

St Lucie W Blvd

44,500 AADT

16,500 AADT



Walgreens

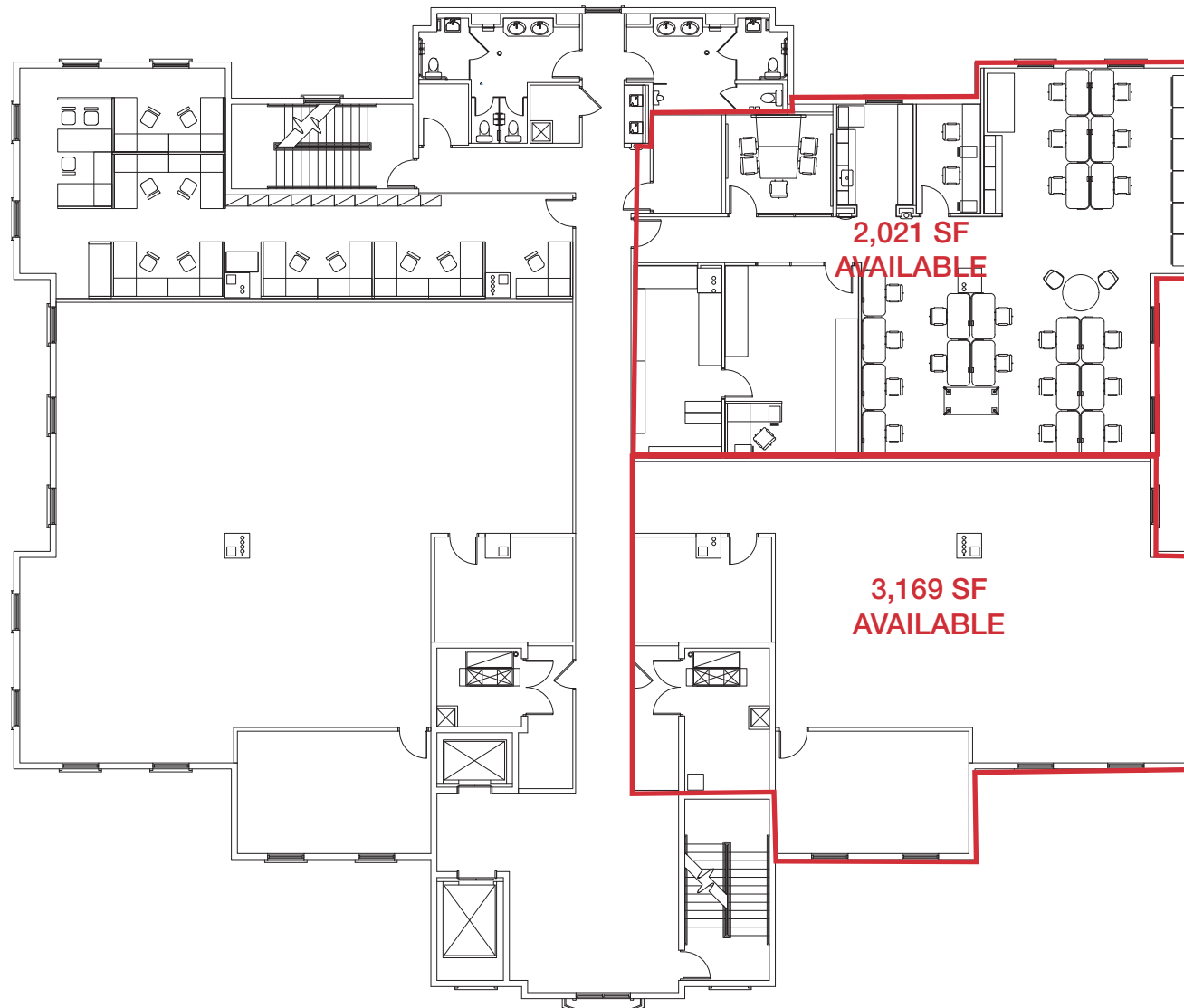
Goodwill

AspenDental

PROFESSIONAL OFFICE SPACE FOR LEASE | 1660 SW Saint Lucie West Blvd, Port St Lucie, FL 34986

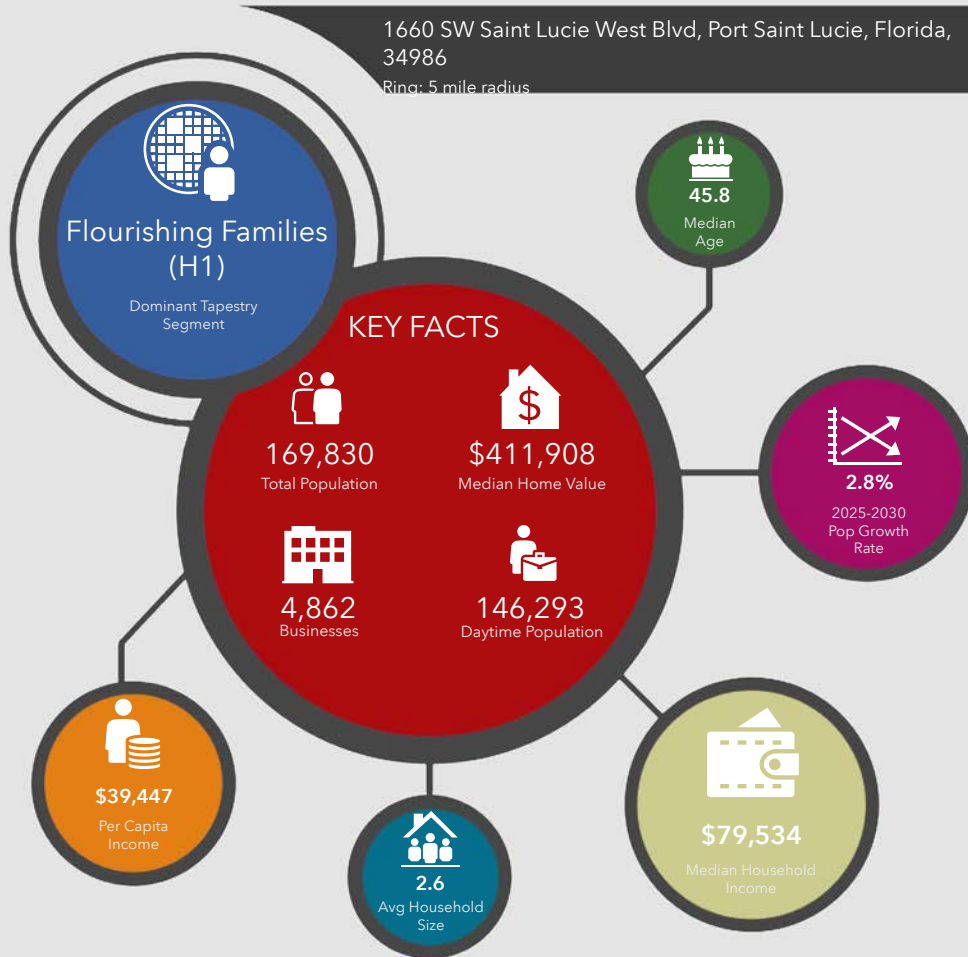
NAI Southcoast



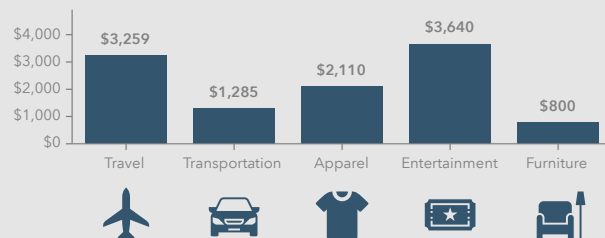




1660 SW Saint Lucie West Blvd, Port Saint Lucie, Florida,  
34986  
Ring: 5 mile radius



#### KEY SPENDING FACTS



**NAI Southcoast**  
COMMERCIAL REAL ESTATE SERVICES, INCORPORATED

**Source:** This infographic contains data provided by Esri (2025, 2030), Esri-Data Axle (2025), Esri-U.S. BLS (2025).

© 2025 Esri

Spending facts are average annual dollars per household

#### Population

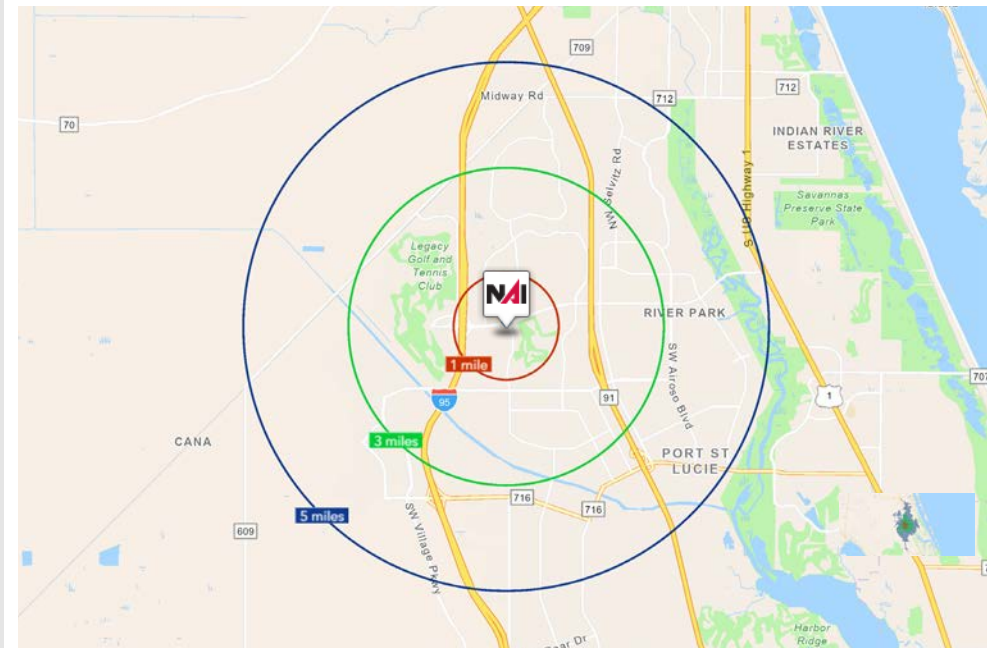
1 Mile:	4,885
3 Mile:	71,180
5 Mile:	169,830

#### Average Household Income

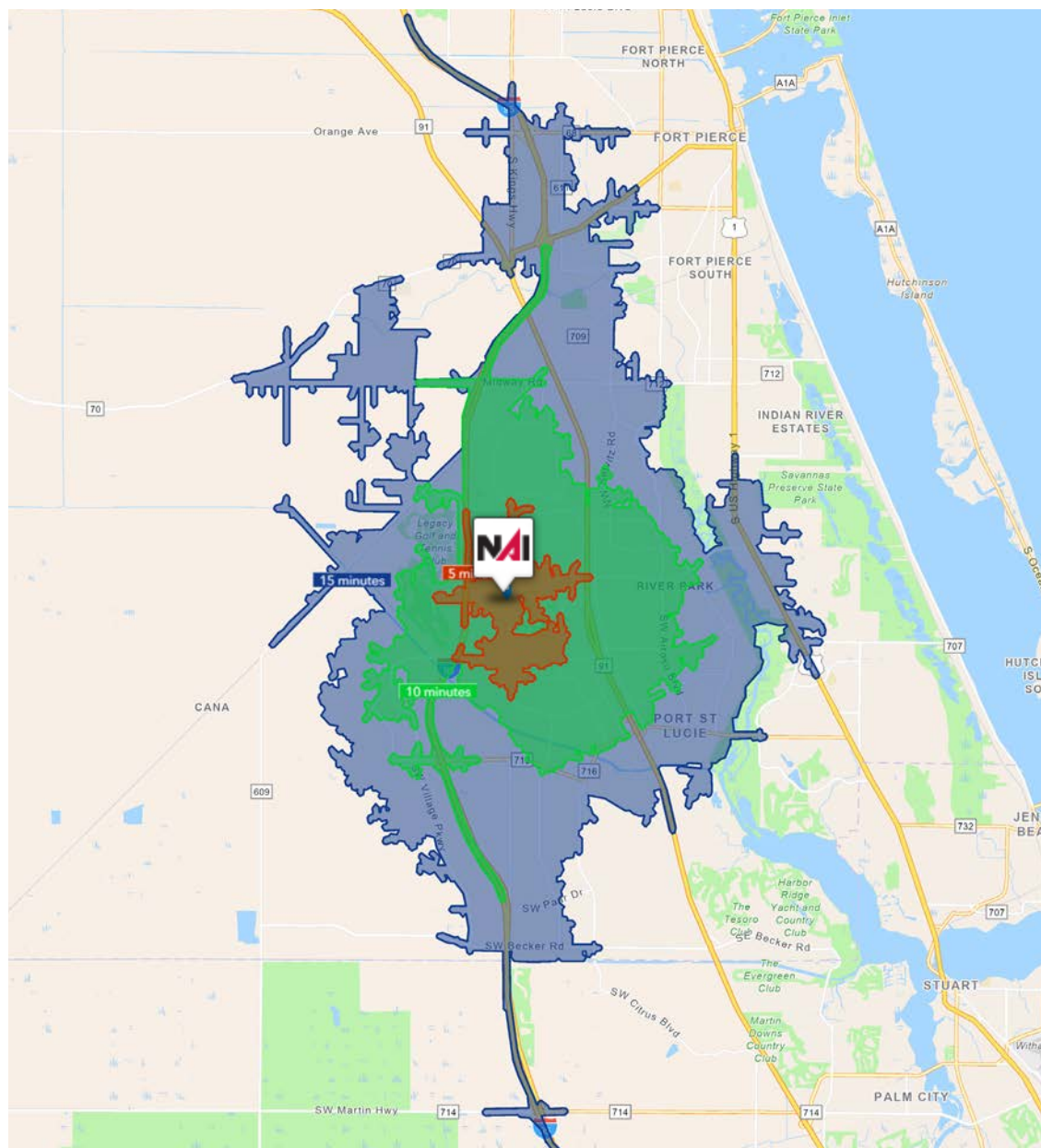
1 Mile:	\$103,024
3 Mile:	\$107,072
5 Mile:	\$102,685

#### Median Age

1 Mile:	61.8
3 Mile:	48.1
5 Mile:	45.8







5 Minutes	10 Minutes	15 Minutes
<b>7,746</b> 2010 Population	<b>60,875</b> 2010 Population	<b>132,421</b> 2010 Population
<b>9,296</b> 2025 Population	<b>83,417</b> 2025 Population	<b>196,137</b> 2025 Population
<b>20.0%</b> 2010-2025 Population Growth	<b>37.0%</b> 2010-2025 Population Growth	<b>48.1%</b> 2010-2025 Population Growth
<b>1.54%</b> 2025-2030 (Annual) Est. Population Growth	<b>2.43%</b> 2025-2030 (Annual) Est. Population Growth	<b>2.79%</b> 2025-2030 (Annual) Est. Population Growth
<b>55.2</b> 2025 Median Age	<b>45.9</b> 2025 Median Age	<b>45.6</b> 2025 Median Age
<b>\$107,992</b> Average Household Income	<b>\$100,777</b> Average Household Income	<b>\$102,691</b> Average Household Income
<b>38.6%</b> Percentage with Associates Degree or Better	<b>40.8%</b> Percentage with Associates Degree or Better	<b>42.5%</b> Percentage with Associates Degree or Better
<b>58.0%</b> Percentage in White Collar Profession	<b>59.0%</b> Percentage in White Collar Profession	<b>59.9%</b> Percentage in White Collar Profession



# St Lucie County

## Economic Expansion, 2019 - Present

	Company	Industry	Location	Project Scope	Projected New Jobs	Baseline Employment	2024 Total Employment	Facility Square Footage
Calendar Year 2019	Dirty Deeds Cleaning Service	Small Business	St. Lucie County	EXPANSION	31	44	22	6,000
	Drexel Metals	Manufacturing	Port St. Lucie	NEW	25	0	7	25,000
	PlusOneAir	Aviation	St. Lucie County	NEW	25	0	40	25,000
	Pursuit Boats II	Marine	St. Lucie County	EXPANSION	200	404	584	236,000
	Ross Mixing	Manufacturing	Port St. Lucie	EXPANSION	16	40	40	55,000
Calendar Year 2020	California Closets	Warehouse/Distribution	St. Lucie County	EXPANSION	10	28	37	10,000
	Citrus Extracts	Manufacturing	Fort Pierce	NEW	40	35	18	75ft. Tower
	FedEx Ground	Warehouse/Distribution	Port St. Lucie	NEW	490†	0	451†	245,000
	Indian River Spirits	Manufacturing	St. Lucie County	NEW	5	0	X	20,000
	Interstate Crossroads Business Center by The Silverman Group	Industrial Development	Fort Pierce	NEW	**	0	**	1,133,000
	Legacy Park at Tradition by Sansone Group	Industrial Development	Port St. Lucie	NEW	1,602**	0	‡	2,347,315 ‡
	Total Truck Parts	Warehouse/Distribution	Port St. Lucie	EXPANSION	10	16	15	51,780
	Wolflube	Warehouse/Distribution	St. Lucie County	NEW	15	0	2	30,000
Calendar Year 2021	Amazon First-mile Fulfillment Center	Warehouse/Distribution	Port St. Lucie	NEW	500	0	1200	1,100,000
	Chandler Bats	Manufacturing	Port St. Lucie	NEW	11	0	21	17,000
	Chemical Technologies Holdings	Manufacturing	St. Lucie County	NEW	5	0	2	8,000
	Cheney Brothers	Warehouse/Distribution	Port St. Lucie	NEW	350	0	310	427,000
	Contender Boats	Marine	St. Lucie County	NEW	200	0	120	100,000
	D&D Welding	Manufacturing	St. Lucie County	EXPANSION	10	32	42	33,000
	FA Precast	Manufacturing	St. Lucie County	EXPANSION	0	22	21	17,000
	Freshco/Indian River Select	Manufacturing	Fort Pierce	EXPANSION	20	90	55	16,375
	Jansteel	Manufacturing	Port St. Lucie	NEW	55	0	X	67,193
	Kings Logistics Center	Industrial Development	St. Lucie County	NEW	433*	0	0	650,000
	Maverick Boat Group	Marine	St. Lucie County	EXPANSION	150	520	333	106,000
	South Florida Logistics Center 95	Industrial Development	St. Lucie County	NEW	566** ‡	0	0 ‡	1,100,000**
	SRS Distribution	Warehouse/Distribution	Fort Pierce	NEW	11	0	NR	32,000

X Not expected to be operational

NR No response

\*\*Projected new jobs derived from the US Energy Information Administration Energy Consumption Survey = Median square feet per worker at 1,500

	Company	Industry	Location	Project Scope	Projected New Jobs	Baseline Employment	2024 Total Employment	Facility Square Footage
Calendar Year 2022	Amazon Delivery Station	Warehouse/Distribution	Port St. Lucie	NEW	200	170	300	220,000
	Arcosa Meyer Utility Structures	Manufacturing	St. Lucie County	NEW	99	0	36	81,750
	Glades Commerce Center	Industrial Development	Port St. Lucie	NEW	192*	0	0	287,500
	Glades Logistics Park	Industrial Development	Port St. Lucie	NEW	236*	0	0	354,200
	Interstate Commerce Center	Industrial Development	Fort Pierce	NEW	138*	0	NR	207,458
	Islamorada Distillery	Manufacturing	St. Lucie County	EXPANSION	15	0	8	19,841
	Islamorada Warehouse	Warehouse/Distribution	St. Lucie County	EXPANSION	0	0	0	22,000
	Legacy Park Spec A	Industrial Development	Port St. Lucie	NEW	112*‡	0	23**	168,000
	Legacy Park Spec B	Industrial Development	Port St. Lucie	NEW	347*	0	0	520,000
	MJC Express	Transportation	Fort Pierce	NEW	25	0	X	6,000
Calendar Year 2023	Pursuit Boats Phase 3	Marine	St. Lucie County	EXPANSION	100	634	584	109,000
	St. Lucie Commerce Center	Industrial Development	Fort Pierce	NEW	800*	0	X	1,200,000
	Tenet Health	Life Sciences	Port St. Lucie	NEW	600†	0	0	181,925
	Accel Industrial Park	Industrial Development	Port St. Lucie	NEW	138*‡	0	0	389,000
	Dragonfly Commerce Park	Industrial Development	Port St. Lucie	NEW	270*	0	0	405,508
	LactaLogics	Life Science/Headquarters	Port St. Lucie	NEW	60	0	6	60,000
	Legacy Park Cold Storage Facility	Warehouse/Distribution	Port St. Lucie	NEW	253*	0	0	378,521
	Orange 95 Commerce Center	Industrial Development	Fort Pierce	NEW	391*‡	0	0	587,000‡
	Tradition Commerce Park	Industrial Development	Port St. Lucie	NEW	355*	0	0	532,346
	Treasure Coast Food Bank	Warehouse/Distribution	Fort Pierce	EXPANSION	53	71	70	132,000
Calendar Year 2024	Twin Vee	Marine	Fort Pierce	EXPANSION	0	120	55	23,456
	Alex Lee, Inc.	Warehouse/Distribution	Port St. Lucie	NEW	121	0	0	165,000
	Apollo Group	Warehouse/Distribution	St. Lucie County	NEW	300	0	24	245,900
	APP Jet Center	Aviation	St. Lucie County	EXPANSION	0	22	22	33,600
	BroadRange Logistics	Warehouse/Distribution	Fort Pierce	NEW	755*	0	1	\$
	Costco Warehouse Depot Phase 1	Warehouse/Distribution	Port St. Lucie	NEW	265	0	0	622,685
	Infinity Flight Group	Aviation	St. Lucie County	NEW	30	0	0	8,825
	Lightbridge Academy	Education	Port St. Lucie	NEW	22	0	27	11,000
	Marine Digital Integrators	Manufacturing	Port St. Lucie	NEW	54	0	0	\$
	PI Motor Club	Leisure/Hospitality	St. Lucie County	NEW	125	0	0	TBD
8 YEAR TOTALS	Project Four PSL	Manufacturing	Port St. Lucie	NEW	225	0	0	250,000
	SportLife Distributing	Headquarters	Fort Pierce	EXPANSION	30	13	13	25,000
8 YEAR TOTALS					12,935	6,743	11,297	16,510,578

† Includes full-time, part-time and per diem workers

‡ Projected new jobs and facility square footage net of announced projects within the park; total employment reported under end user projects

All or some jobs and/or square footage transferred to another project listed in this Project Update as a separate project (usually end users) and often in a different year

\$ Square footage – see Interstate Crossroads &amp; Legacy Park 2020





### City of Port St Lucie, Florida

In 1961, Port Saint Lucie was incorporated as a city. Today, consisting of 120 square miles with a population of more than 200,000, the City of Port St. Lucie is the 8th largest City in Florida and the 3rd largest City in South Florida, the 130th largest City in the United States. The city is led by a five-member elected Council, which sets policy and determines the long-term vision for the city. This system is called a Council-Manager form of local government. Each Council member has one vote, including the Mayor, so legislative authority is equally spread among all five members.

Development within the City has been primarily west of I-95 within the Tradition Development; however, there is much infill development occurring in the General Development platted areas of the city. At its inception, Port St. Lucie was platted by General Development company as 15,000 acres of 80x120 single family lots. The development patten has largely held true to this plat, with utilities, public works and roads being expanded over the decades to accommodate the growth of the city. As pro-growth municipality Port St. Lucie is generally viewed as a favorable environment to do business.



## St. Lucie County, Florida

Extensive, dependable transportation and easy access is the key to growth, and St. Lucie County has both in abundance. Interstate Highway 95 and U.S. Highway 1 provide easy access to the country's east coast, from Key West to Maine. The Florida Turnpike stretches from just south of Miami through northern-central Florida, while State Road 70 runs from U.S. Highway 1 in Fort Pierce west to Bradenton, Florida. St. Lucie County offers a plethora of transportation linkages which include rail, a custom-serviced international airport, and a deep-water port – all of which enable easy access to all St. Lucie County has to offer. The St. Lucie County International Airport is also one of the busiest general aviation airports in the state.

The county has a population of over 358,704 and has experienced growth of over 28% since 2010. The area economy is a blend of emerging life science R&D with traditional manufacturing, agriculture, tourism and services. St. Lucie County's natural resources are enviable, with more than 21 miles of pristine coastline and beaches, coral reefs, more than 20,000 acres of public parks and nature preserves, and miles of rivers and waterways. The area boasts over 20 public and semiprivate courses, with prices ranging from upscale to very affordable, and the great weather allows for play all year round. St. Lucie County is home to Clover Park in Port St. Lucie, the Spring training home of the New York Mets.

The county is host to Indian River State College, an institution that has won national recognition for excellence and innovation applied toward training and education. St. Lucie County boasts 52 schools with a total of 43,612 students and 8,800 staff. The Economic Development Council of St. Lucie County (EDC) is a non-profit organization with the goal of creating more, high-paying jobs for residents by working in concert on agreed upon strategies to promote the retention and expansion of existing businesses, as well as attracting new ones to St. Lucie County. Workers employed in St. Lucie County are clustered in the Health Care and Social Assistance (18.4%), and Retail Trade (11.9%) industries. Workers living in St. Lucie County are concentrated in the Health Care and Social Assistance (16.3%), and Retail Trade (14.1%) industries. Since 2017 the EDC has facilitated 40 expansion and new attraction job creating projects with a net growth of building area of approximately 6,500,000 square feet.







**FOR LEASE**



**Nikolaus M. Schroth, CCIM**

Principal | Broker Associate

+1 772 286 6292

[nikschrth@naisouthcoast.com](mailto:nikschrth@naisouthcoast.com)



**J. Jeffery Allman, Jr.**

Principal | Broker Associate

+1 772 286 6292 c +1 772 283 1555

[jeff@naisouthcoast.com](mailto:jeff@naisouthcoast.com)



**James McKinney**

Sales Associate

+1 772 349 3414

[jamesmckinney@naisouthcoast.com](mailto:jamesmckinney@naisouthcoast.com)

# Professional Office Space

1660 SW St Lucie West Blvd, Port St Lucie, FL 34986

**FOR LEASE**

**\$23.50/SF NNN + \$11.50 CAM**