

For Sublease

Freestanding Office Building

1,900 SF | \$20.21 / SF



545 Delaney Avenue

Orlando, Florida 32801

Property Highlights

- 1,900± SF, 2-story freestanding office building just south of Downtown Orlando
- Great location in the charming Offices at Hovey Court
- Free surface parking available
- Efficient floor plan with 4-5 offices, conference room, break area, lobby and restrooms
- 24/7 access
- Sublease expires 01/31/2030
- Immediate access to Orange Avenue, Anderson Blvd and SR 408
- Just south of Downtown Orlando and immediately north of SoDo
- Directly on the Lymmo Lime Line with stop just steps away



Lease Rate: \$20.21/SF Mod. Gross

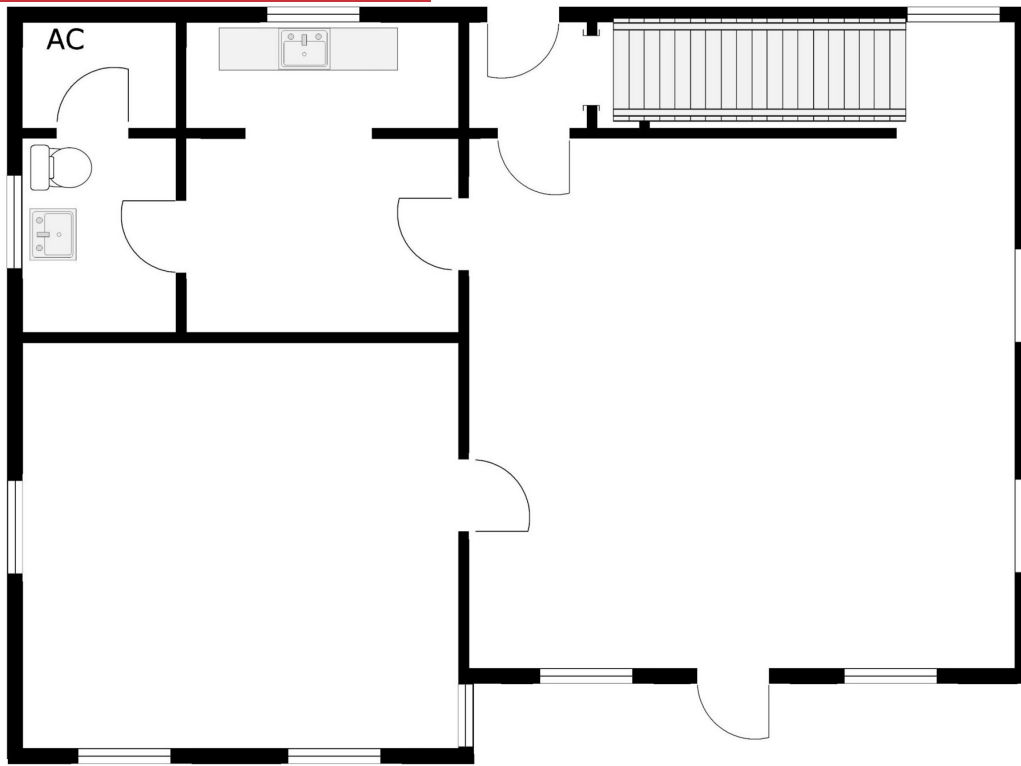
For more information

Jeffrey Bloom, CCIM

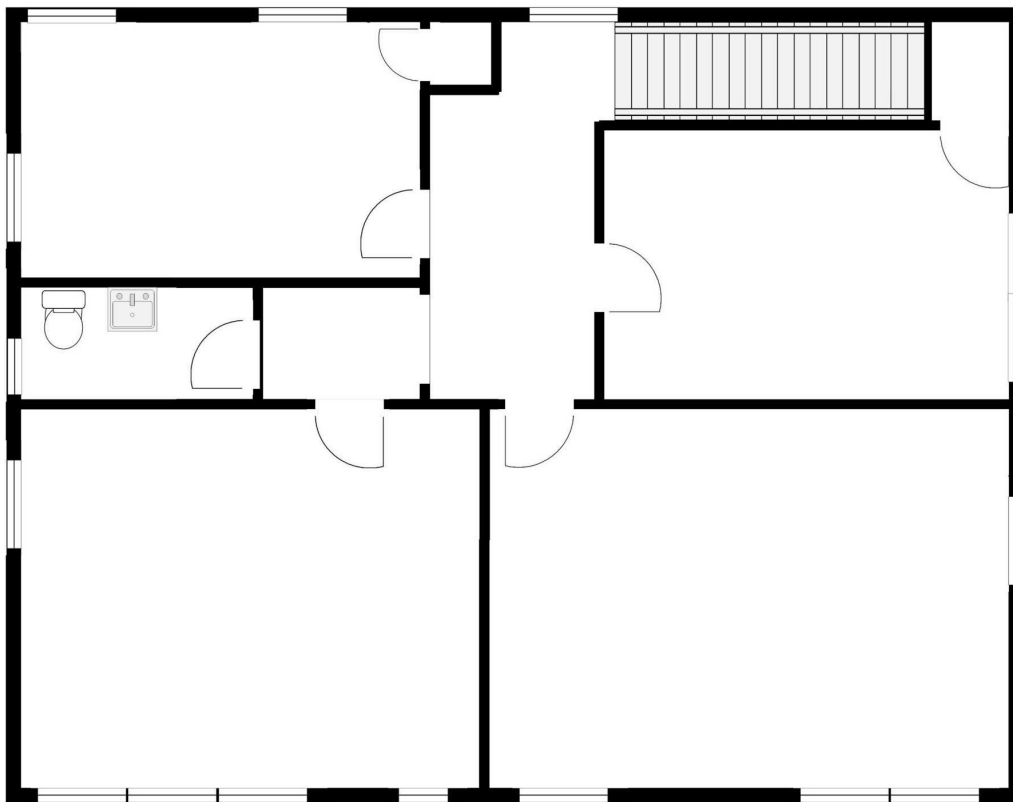
O: 407 949 0709

jbloom@realvest.com

Floor Plans

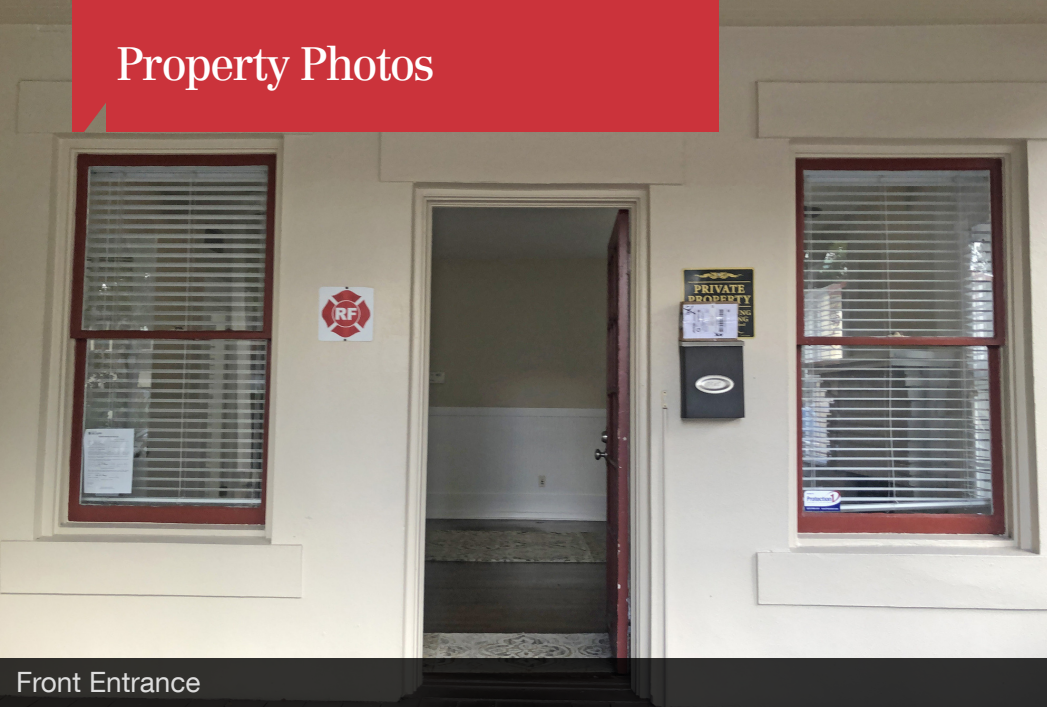


First Floor



Second Floor

Property Photos



Front Entrance



Lobby

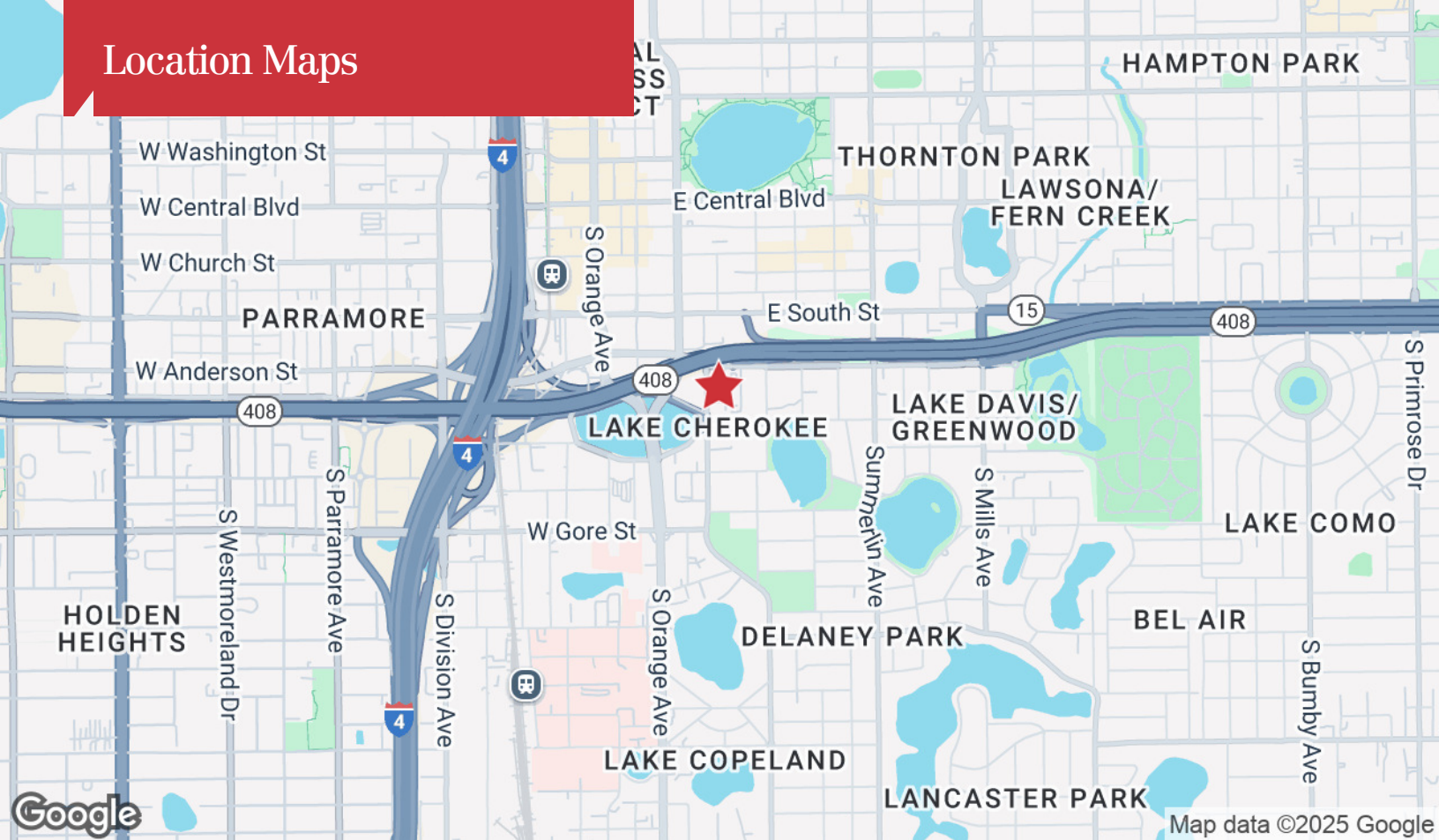


Conference Room

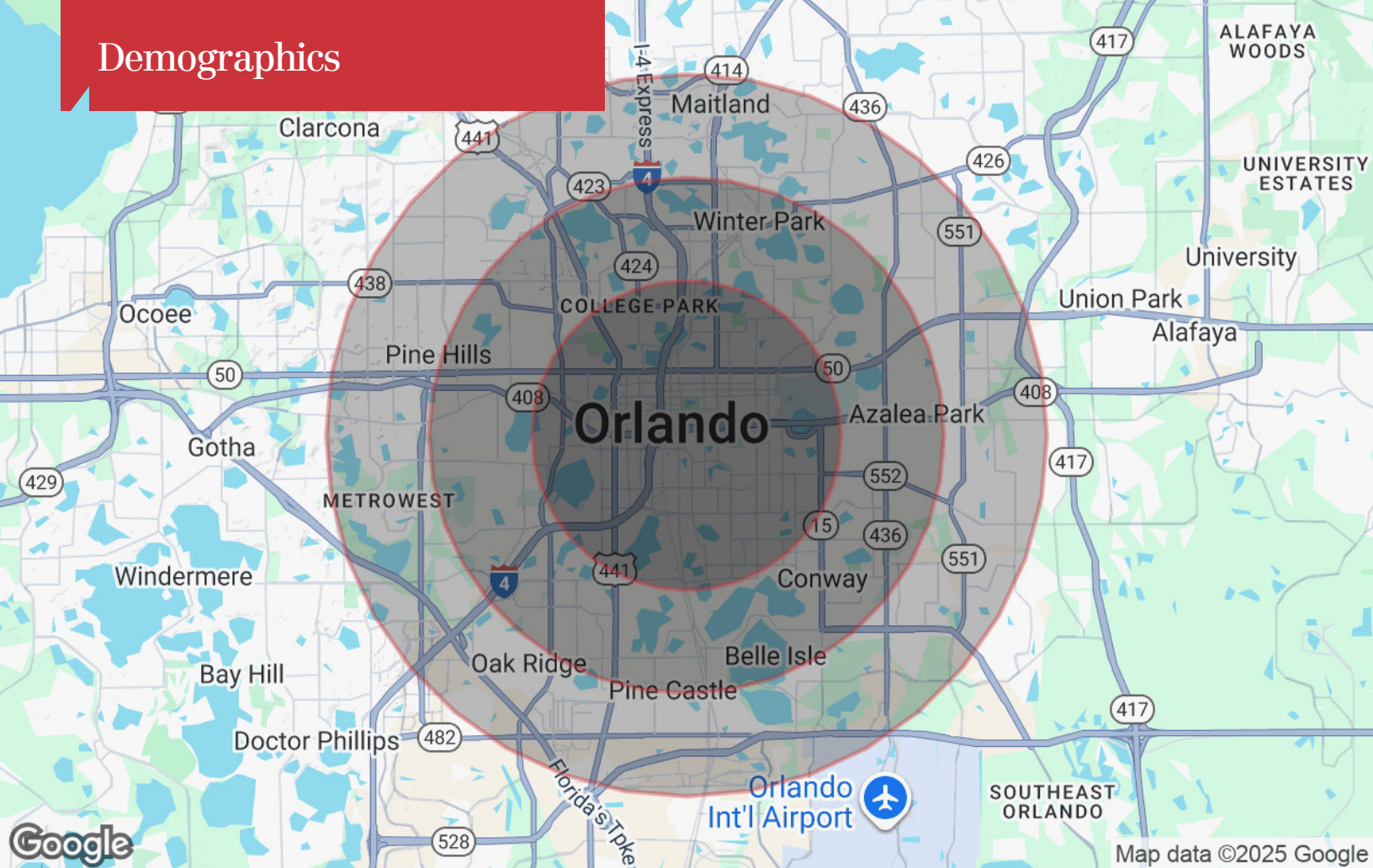


Executive Office

Location Maps



Demographics



Population

	3 Miles	5 Miles	7 Miles
TOTAL POPULATION	114,813	318,735	610,356
MEDIAN AGE	41	40	39
MEDIAN AGE (MALE)	40	39	38
MEDIAN AGE (FEMALE)	42	41	40

Households & Income

	3 Miles	5 Miles	7 Miles
TOTAL HOUSEHOLDS	53,827	132,850	241,720
# OF PERSONS PER HH	2.1	2.4	2.5
AVERAGE HH INCOME	\$106,377	\$95,687	\$86,775
AVERAGE HOUSE VALUE	\$483,597	\$418,970	\$372,488

* Demographic data derived from 2020 ACS - US Census