

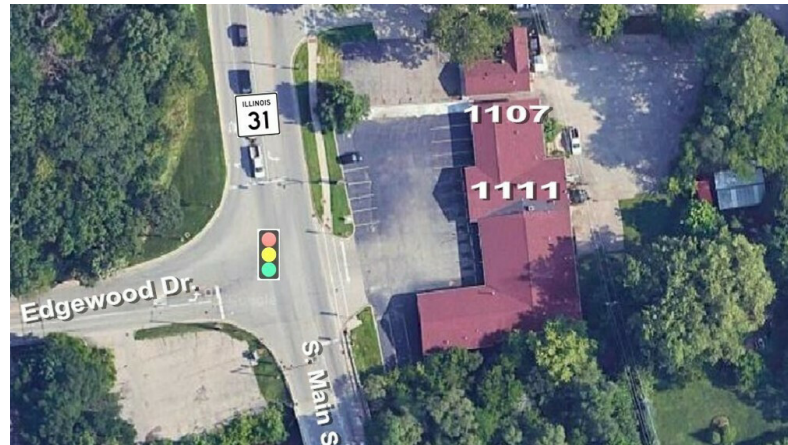
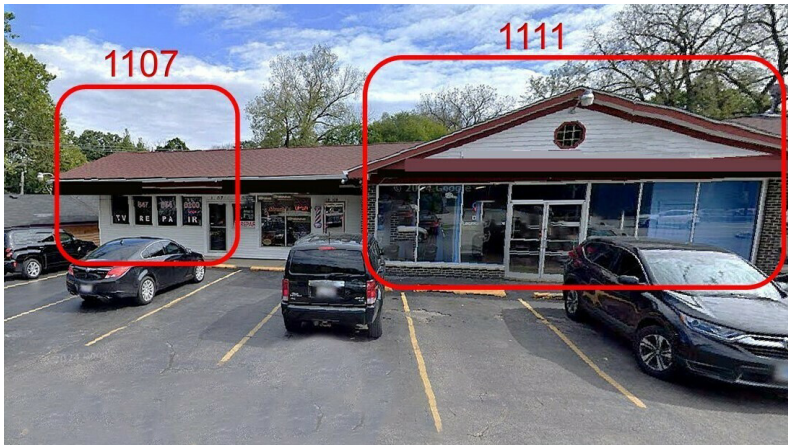
1107 & 1111 S. Main St. (Route 31)

Algonquin, IL 60102

For Lease

MLS #12290074

RETAIL



RETAIL SPACE 900 SF & 1,920 SF

\$15.00 PSF (GROSS)

Retail Spaces Available 900 SF & 1,920 SF

Two prime visibility storefronts in strip center at signalized intersection on Route 31 and Edgewood Dr. with 21,200 vpd.

Unit 1107: 900 end unit, former motorcycle apparel shop. \$1,125/mo. Gross.

Unit 1111: 1,920 SF with large front windows. Ideal for salon, spa, or a multitude of retail uses. \$2,400/mo. Gross.

Demographics	1 Mile	3 Miles	5 Miles
Total Population	6,773	59,112	135,527
Average HH Income	\$131,209	\$126,429	\$130,206

Specifications

Center Size:	11,225 SF
Year Built:	1966
HVAC System:	GFA/ Central Air
Electrical:	100 amp
Washrooms:	Varies per Unit
Ceiling Height:	9 ft
Parking:	Common
Sewer/Water:	City
Zoning:	B2
Utilities:	Tenant Responsibility
CAM & Taxes	Included in Lease
PIN #:	19-33-436-002

[CLICK HERE TO VIEW OUR WEBSITE](#)

No warranty or representation is made as to the accuracy of the foregoing information. Terms of sale or lease and availability are subject to change or withdrawal without notice. This document is for information purposes only. No offer of sub-agency is being made.



Broker Associate
Shari Haefner
ShariH@premiercommercialrealty.com
O: 847.854.2300 x18 C: 312.671.3600

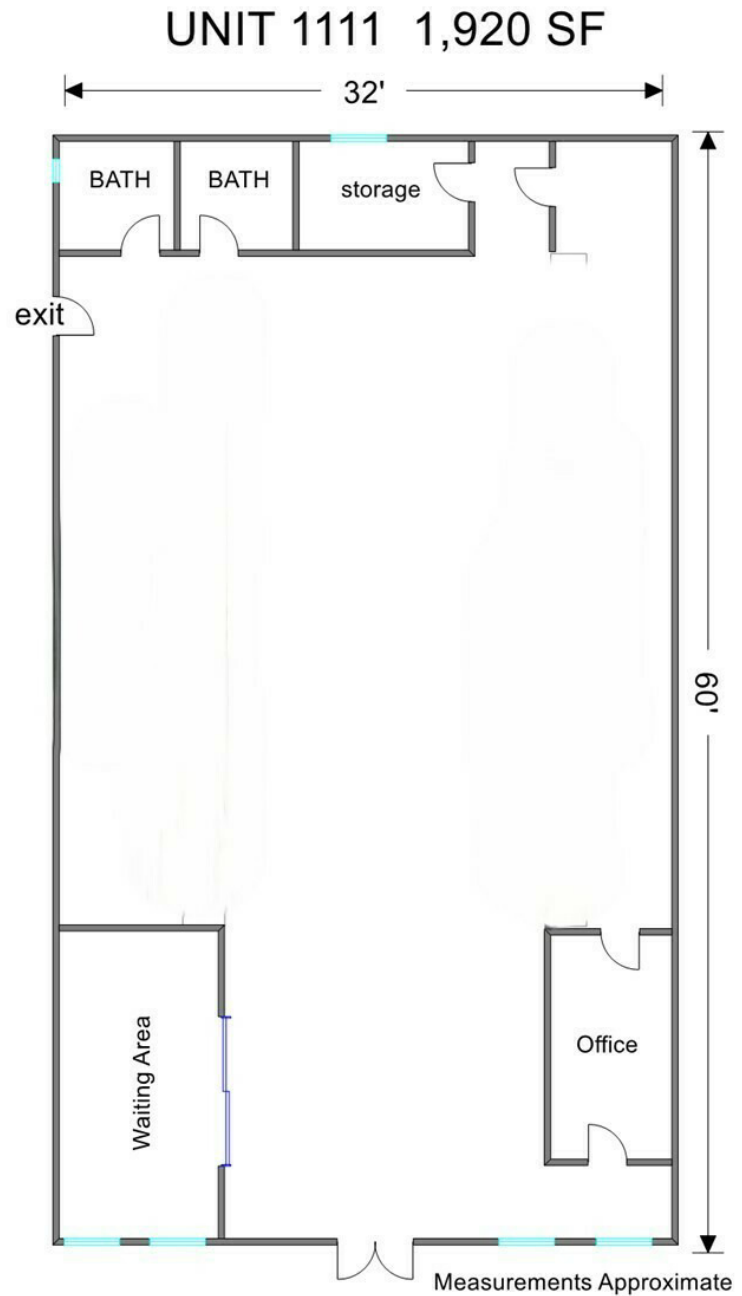
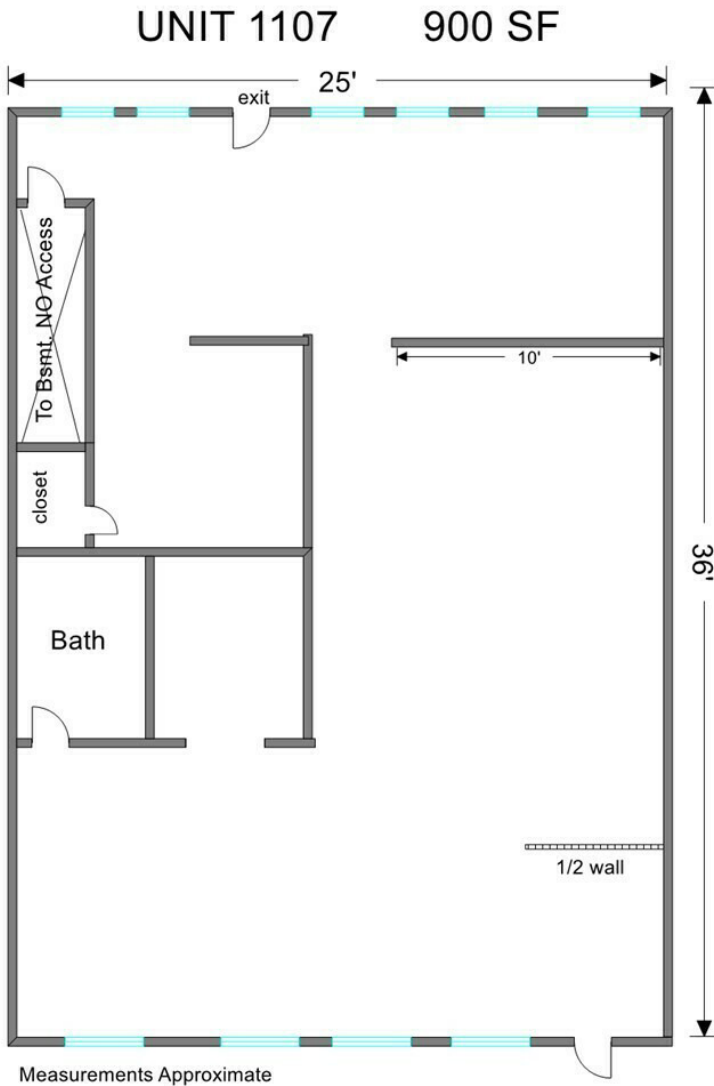
Senior Broker
Bruce Kaplan
BruceK@PremierCommercialRealty.com
O: 847.854.2300 x20 C: 847.507.1759

1107 & 1111 S. Main St. (Route 31)

Algonquin, IL 60102

For Lease

RETAIL



[CLICK HERE TO VIEW OUR WEBSITE](#)

No warranty or representation is made as to the accuracy of the foregoing information. Terms of sale or lease and availability are subject to change or withdrawal without notice. This document is for information purposes only. No offer of sub-agency is being made.



Broker Associate
Shari Haefner
ShariH@premiercommercialrealty.com
O: 847.854.2300 x18 C: 312.671.3600

Senior Broker
Bruce Kaplan
BruceK@PremierCommercialRealty.com
O: 847.854.2300 x20 C: 847.507.1759