



MEDICAL & PROFESSIONAL OFFICES for LEASE

2114 Seven Springs Blvd, New Port Richey, FL 34655



Property Highlights

- **Prime Location-** Located at the corner of Seven Springs Blvd & Hideaway Trail in New Port Richey.
- **Flexible Use-** Layout options for healthcare providers or professional services: 2,722 SF and 2,688 SF (combined 5,410 SF).
- **Medical Space-** Two treatment rooms, X-ray room, nurse/triage station, and shared waiting area.
- **Professional Space-** Six private offices, bullpen area, break room and two restrooms.
- **Price-** Lease rate is \$15 PSF NNN. Rent abatement is available based on 3-5-year lease terms.
- **Parking-** Ample parking around the entire building for employees and visitors.

COL Robert W Werthman

USA (RET) USMA84

Lic. Real Estate Broker Associate

Santek Management, LLC

C:907-378-3000

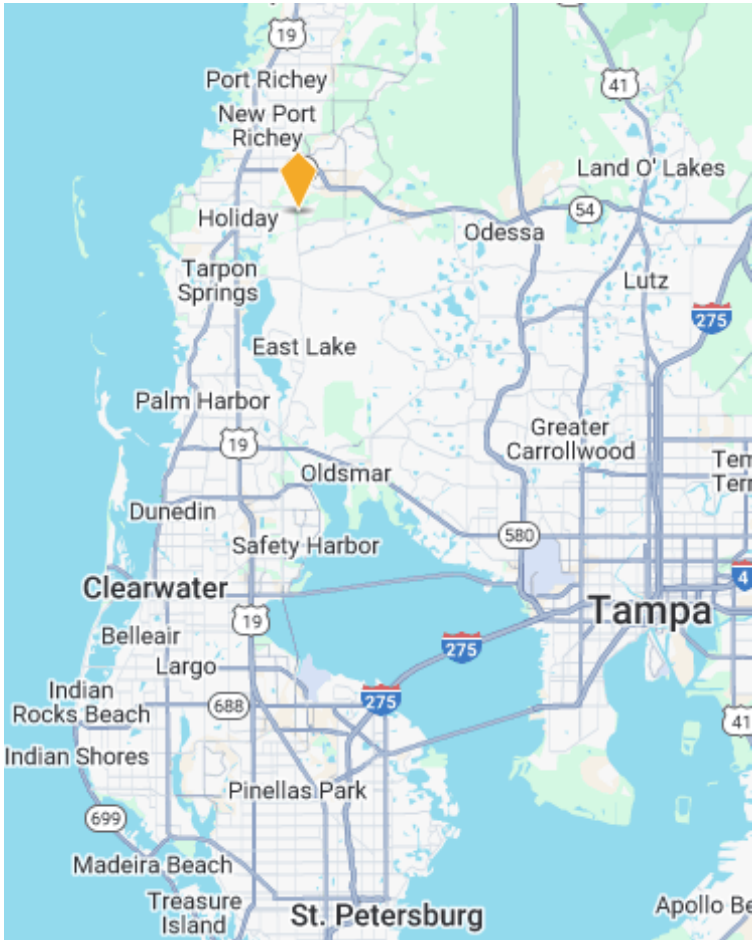
rwerthman@santekmanagement.com





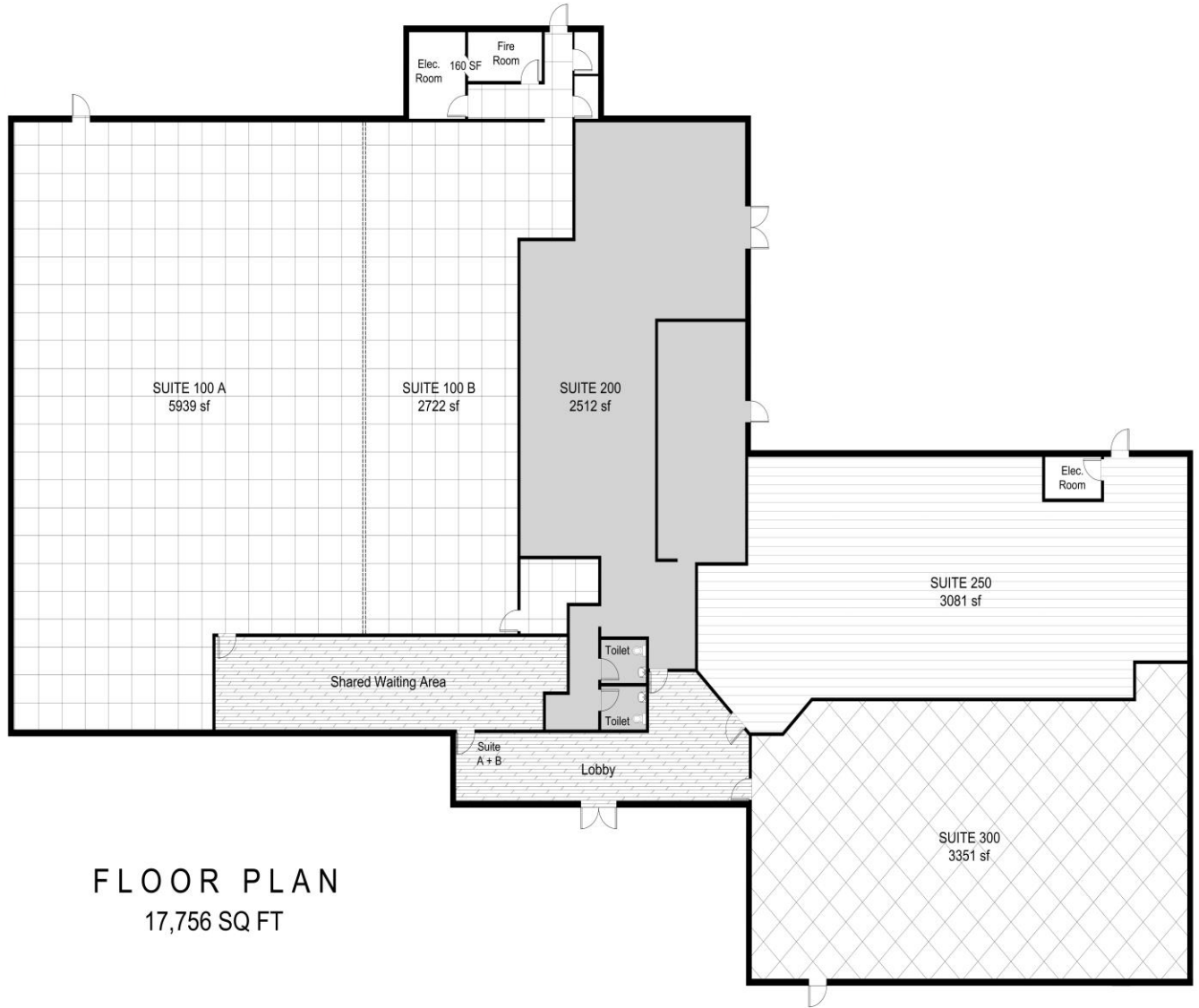
MEDICAL & PROFESSIONAL OFFICES for LEASE

2114 Seven Springs Blvd, New Port Richey, FL 34655



DEMOGRAPHICS	1-MILE	3-MILE	5-MILE
POPULATION	7,690	73,044	172,492
AVERAGE HH INCOME	\$94,017	\$68,898	\$74,423
MEDIAN AGE	42	43	47
TRAFFIC COUNT	15,102 AADT		

COL Robert W Werthman
USA (RET) USMA84
Lic. Real Estate Broker Associate
Santek Management, LLC
C:907-378-3000
rwerthman@santekmanagement.com



FLOOR PLAN
17,756 SQ FT

This floor plan including furniture, fixture measurements and dimensions are approximate and for illustrative purposes only.
BoxBrownie.com gives no guarantee, warranty or representation as to the accuracy and layout.
All enquiries must be directed to the agent, vendor or party representing this floor plan.

2114 Seven Springs Blvd, New Port Richey, FL 34655

