

For Lease

# Office Space with Parking

1,643 - 4,575 SF | \$29.75 / SF



## Day Building

605 East Robinson Street, Orlando, Florida 32801

### Property Highlights

- 83,139± SF, 7-story office building
- Across the street from Lake Eola Park
- Spaces are already built out
- No pass-through expenses
- Free parking available - rare for Downtown Orlando
- Visitors parking area
- On-site management
- No hassles or hidden fees!

**Lease Rate: \$29.75 / SF Full Service**

#### AVAILABLE SPACES

Space	Lease Rate	Size (SF)
Suite 135	\$29.75 SF/yr	1,969
Suite 210	\$29.75 SF/yr	4,258
Suite 308	\$29.75 SF/yr	4,575
Suite 410	\$29.75 SF/yr	2,314
Suite 630	\$29.75 SF/yr	1,643



For more information

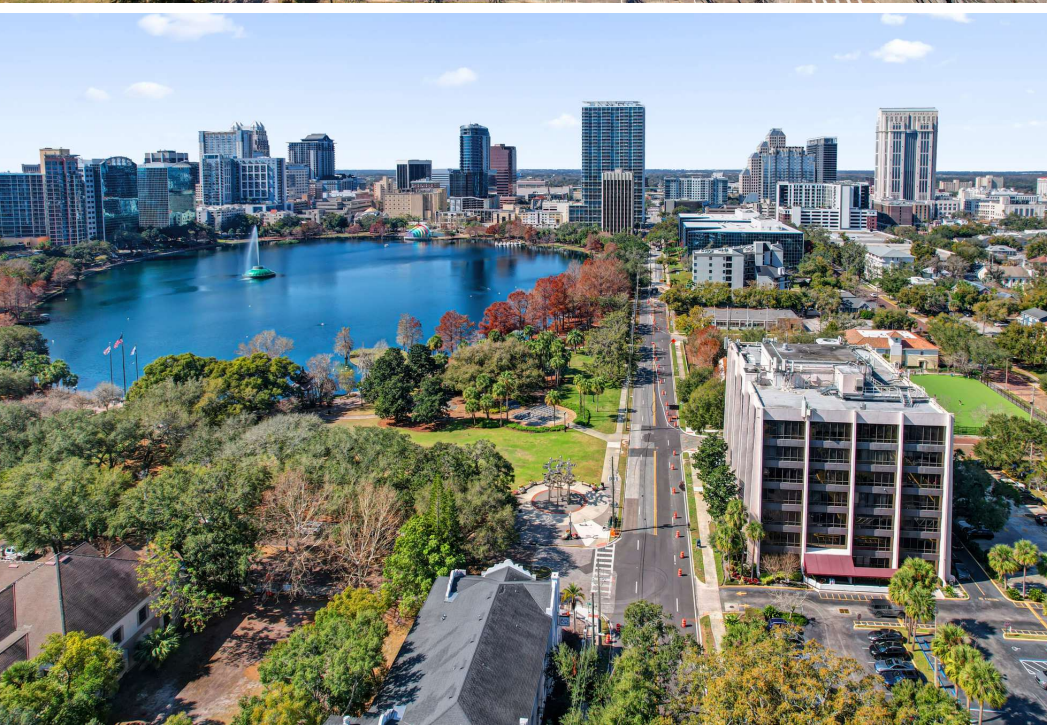
**Jeffrey Bloom, CCIM**

O: 407 949 0709

[jbloom@realvest.com](mailto:jbloom@realvest.com)

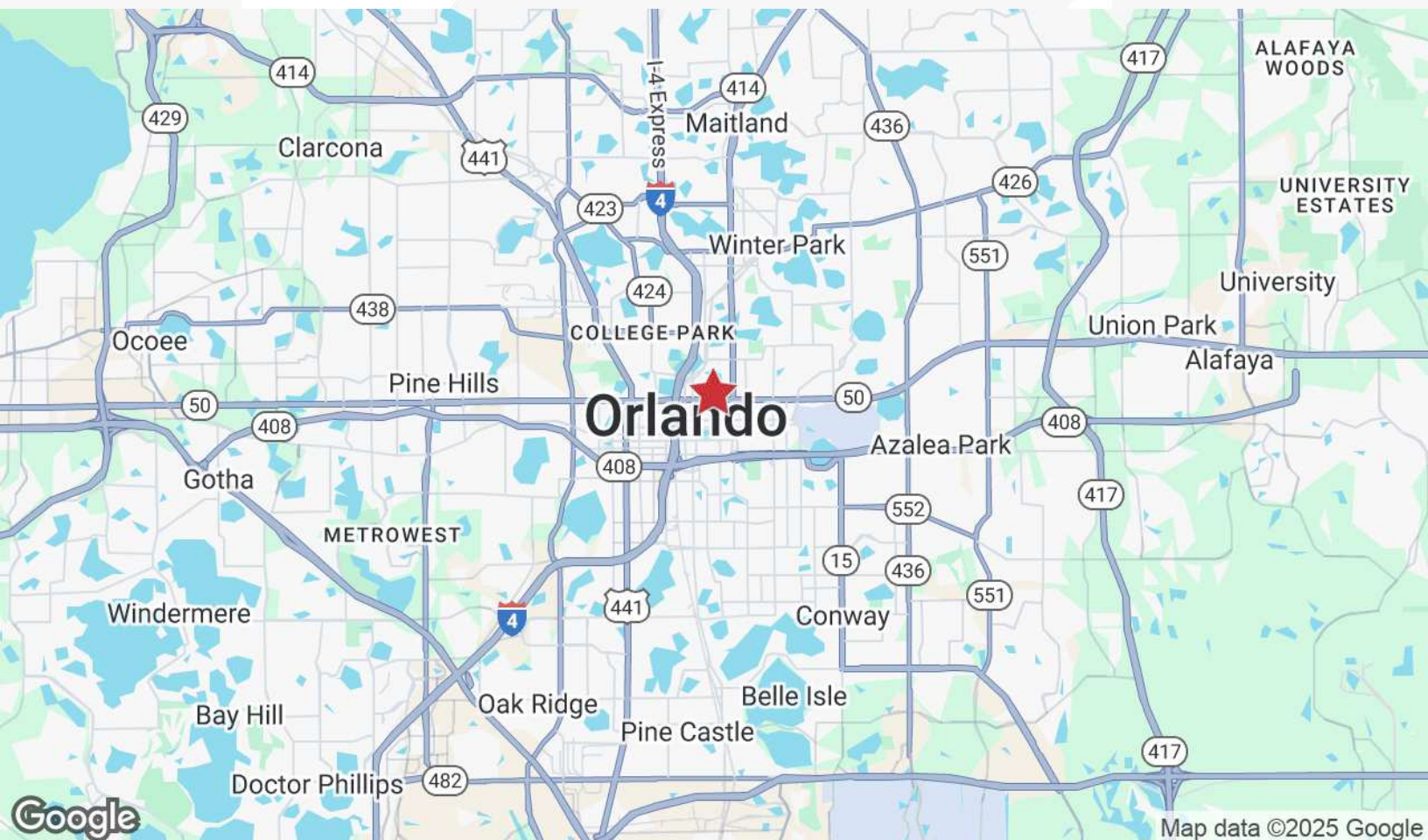
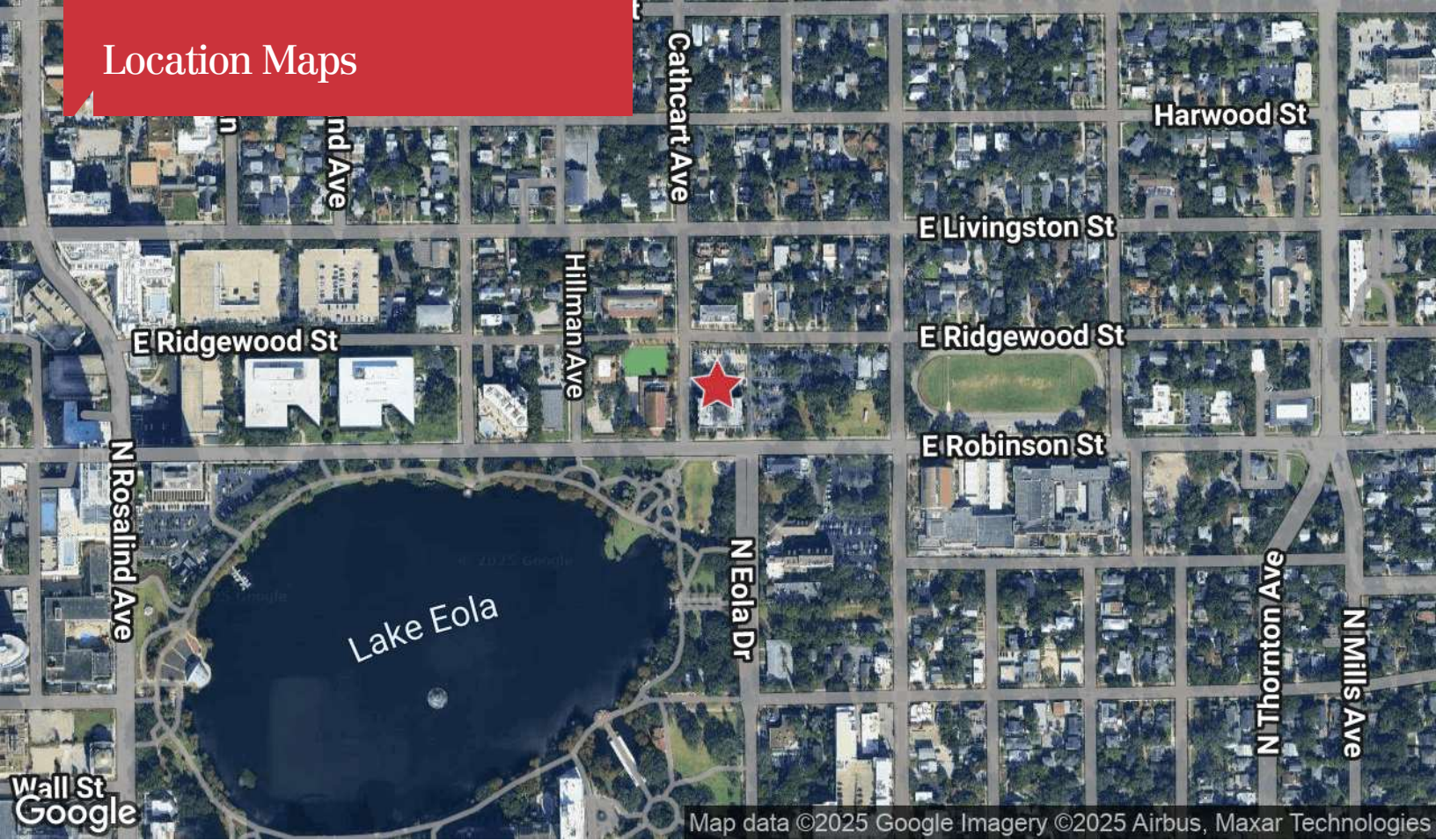


Great Downtown Location



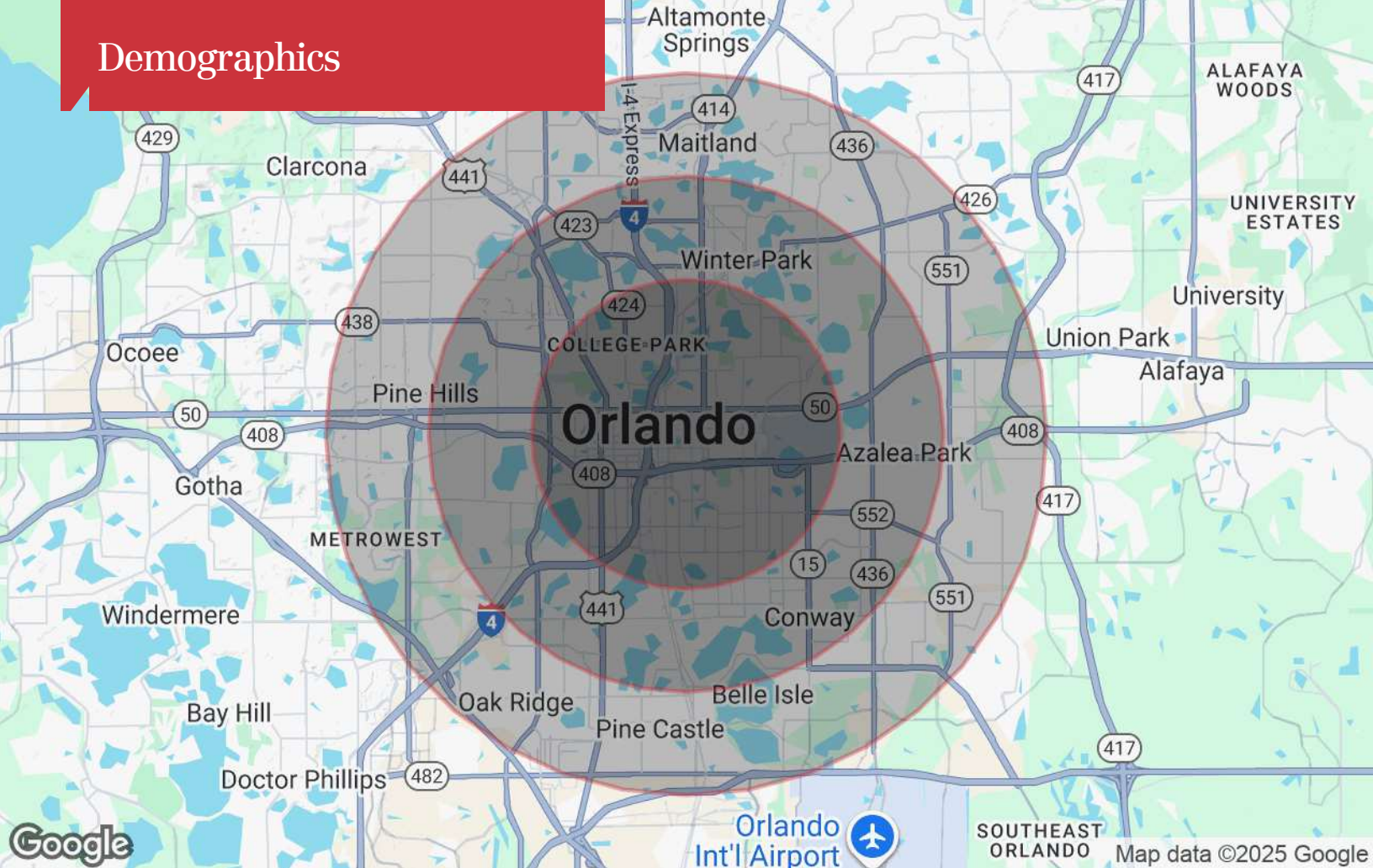


# Location Maps



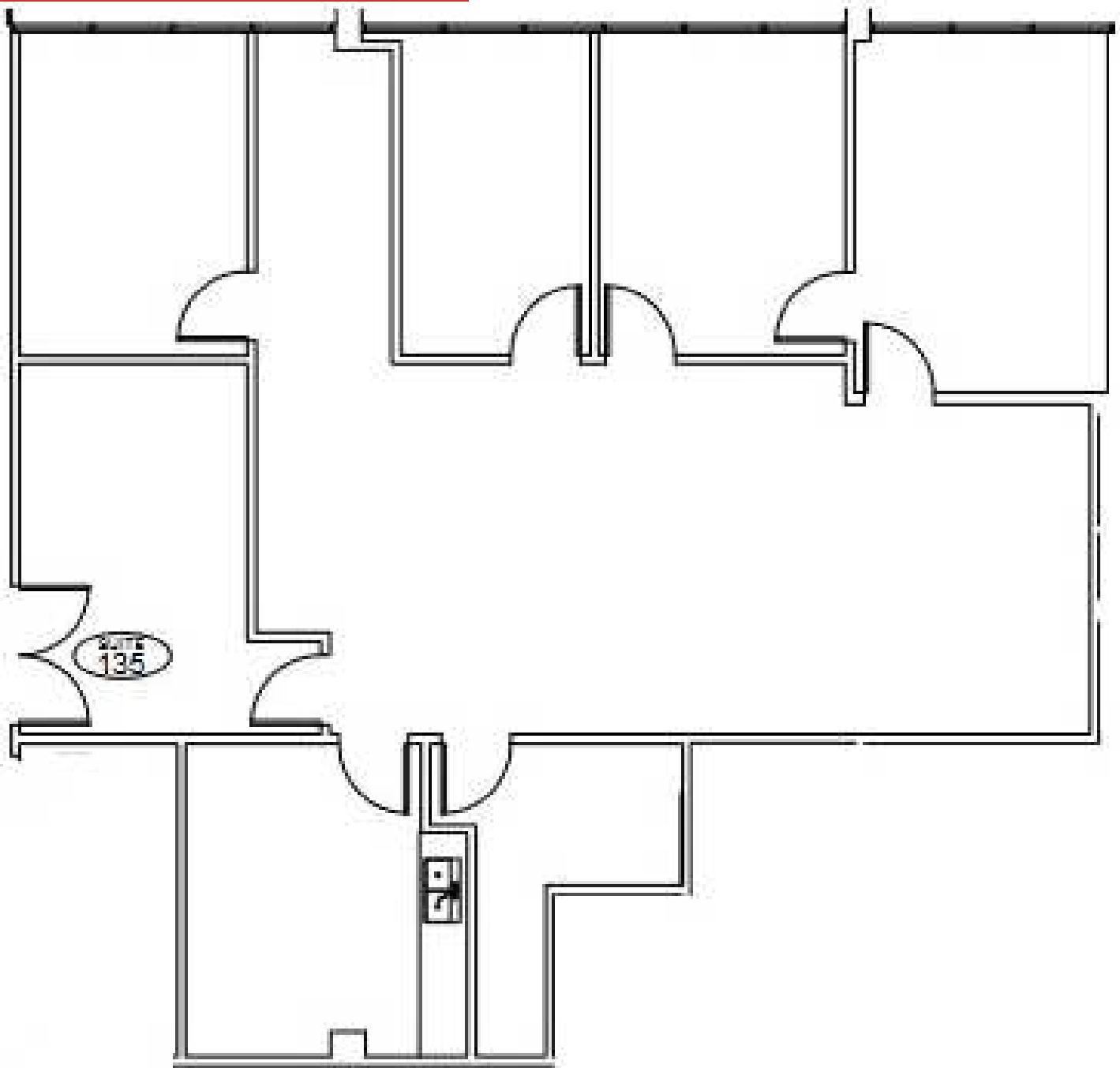


## Demographics

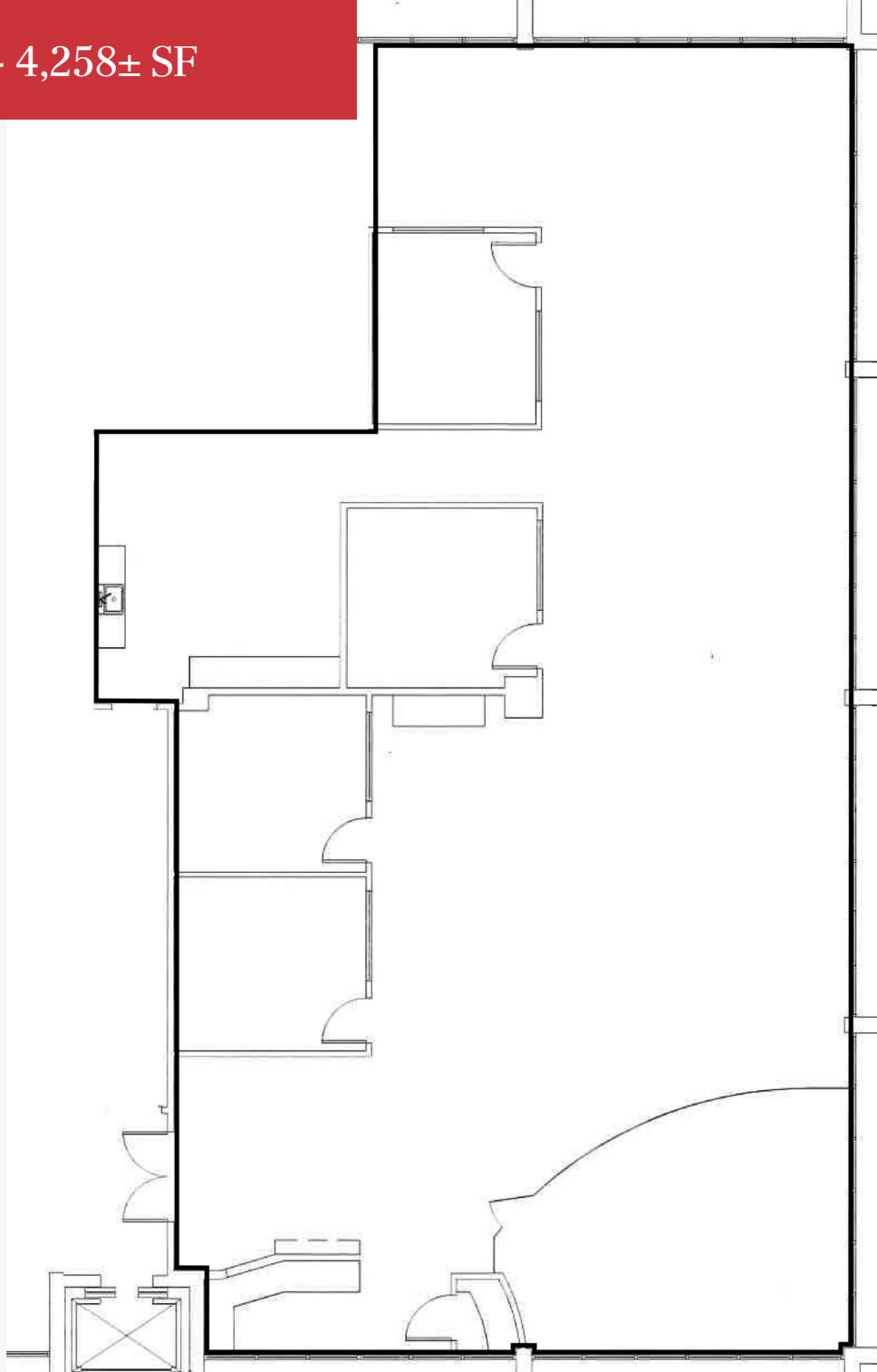


Population	3 Miles	5 Miles	7 Miles
TOTAL POPULATION	97,710	280,846	608,935
MEDIAN AGE	38.6	38.0	36.4
MEDIAN AGE (MALE)	38.2	36.6	35.1
MEDIAN AGE (FEMALE)	39.2	39.6	38.1
Households & Income	3 Miles	5 Miles	7 Miles
TOTAL HOUSEHOLDS	52,021	132,370	262,833
# OF PERSONS PER HH	1.9	2.1	2.3
AVERAGE HH INCOME	\$87,187	\$73,394	\$65,656
AVERAGE HOUSE VALUE	\$289,697	\$252,220	\$209,573

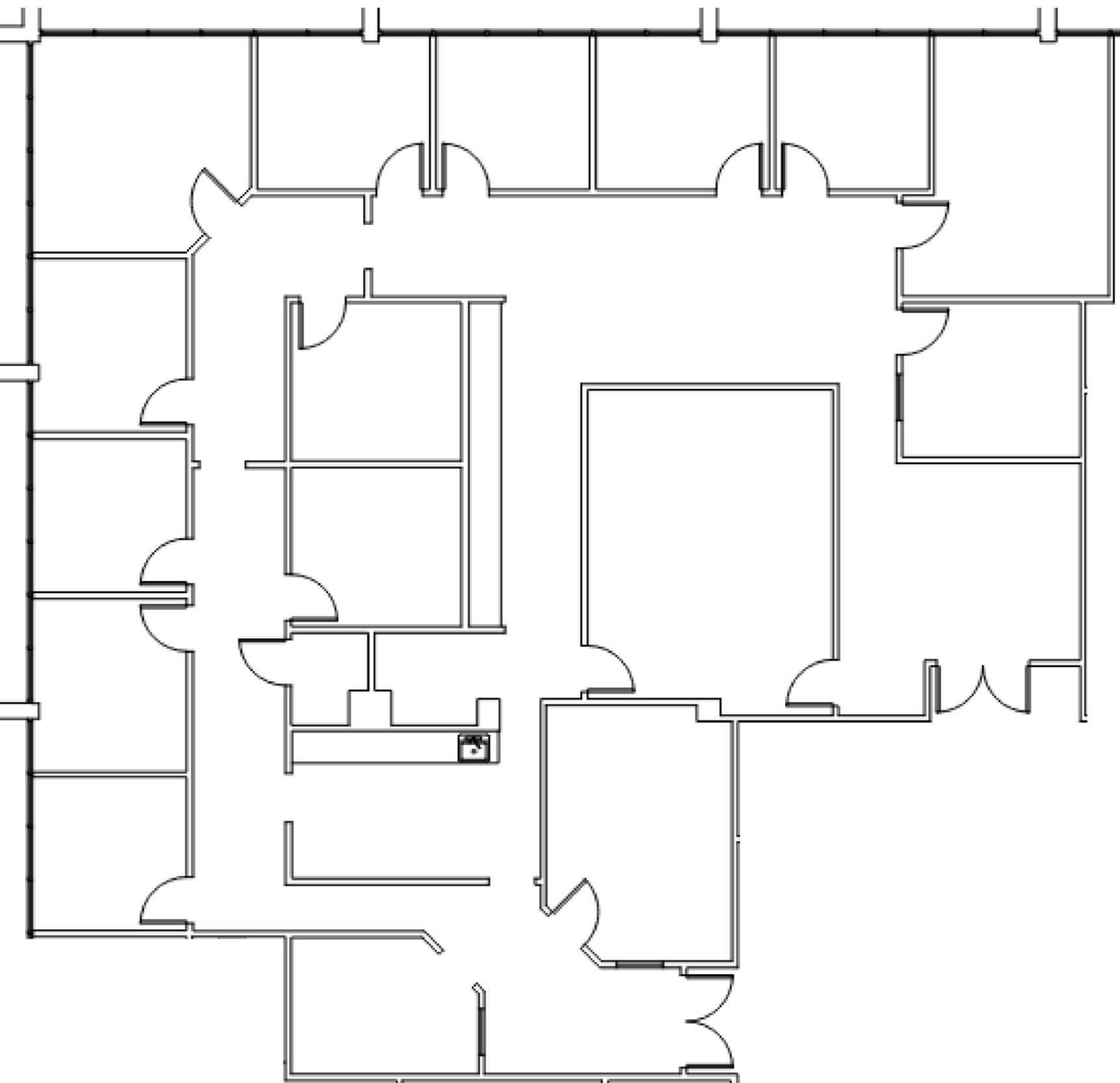
## Suite 135 - 1,969± SF



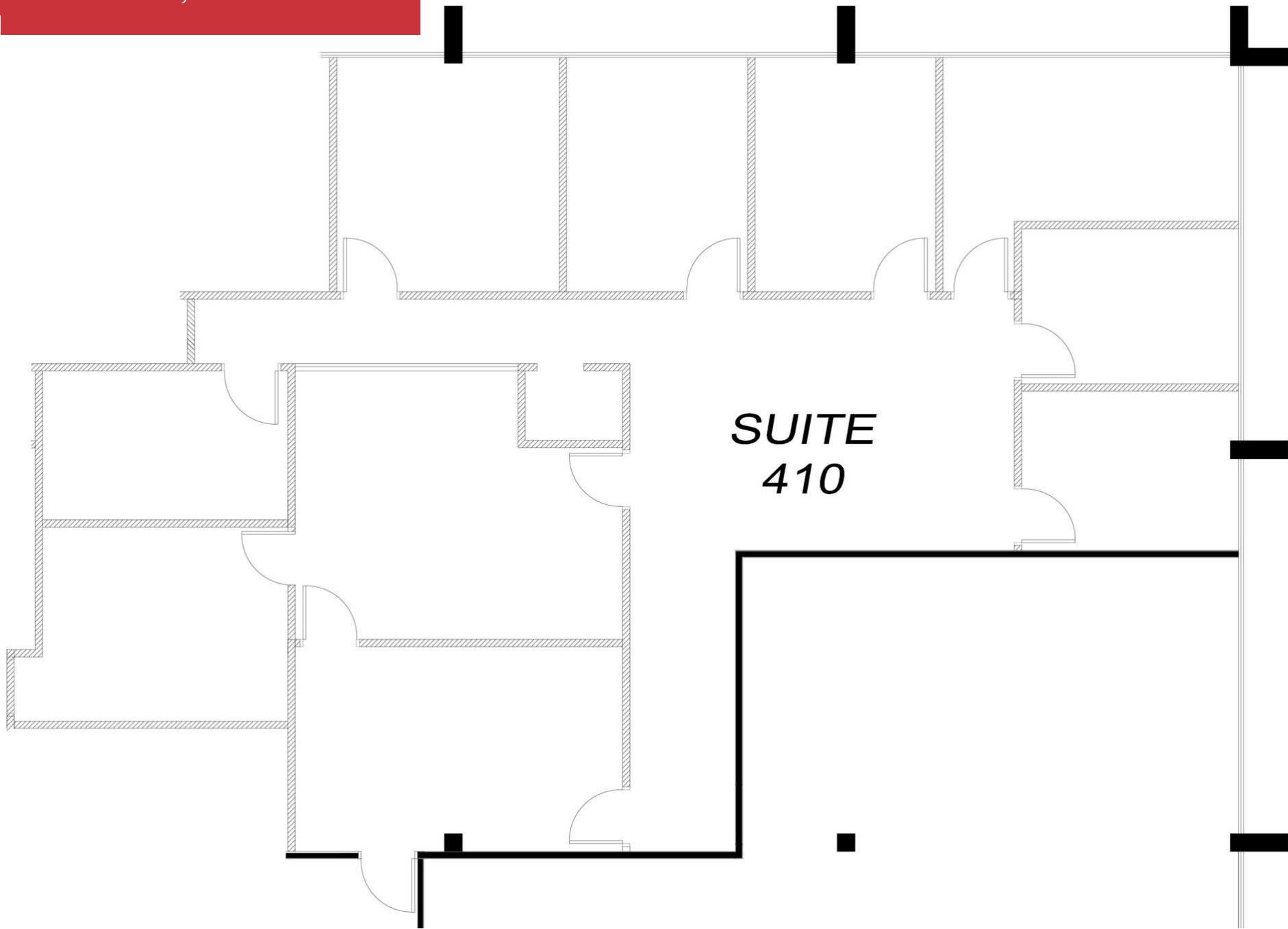
Suite 210 - 4,258± SF



Suite 308 - 4,575 SF



Suite 410 - 2,314± SF





Suite 630 - 1,643± SF

