



BUILDING DATA

Total Building SF: 22,967 SF
Parking: 5.24/1,000
Location: Access to SR 50, SR 408, I-4,
Orange Blossom Trail and SR 429

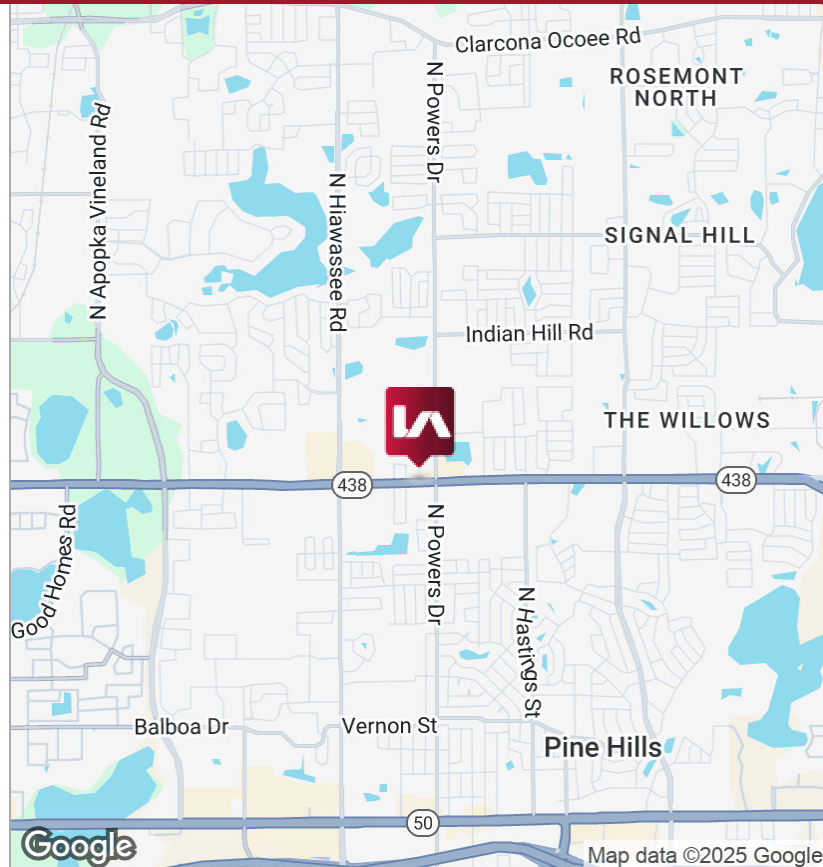
LISTING DATA

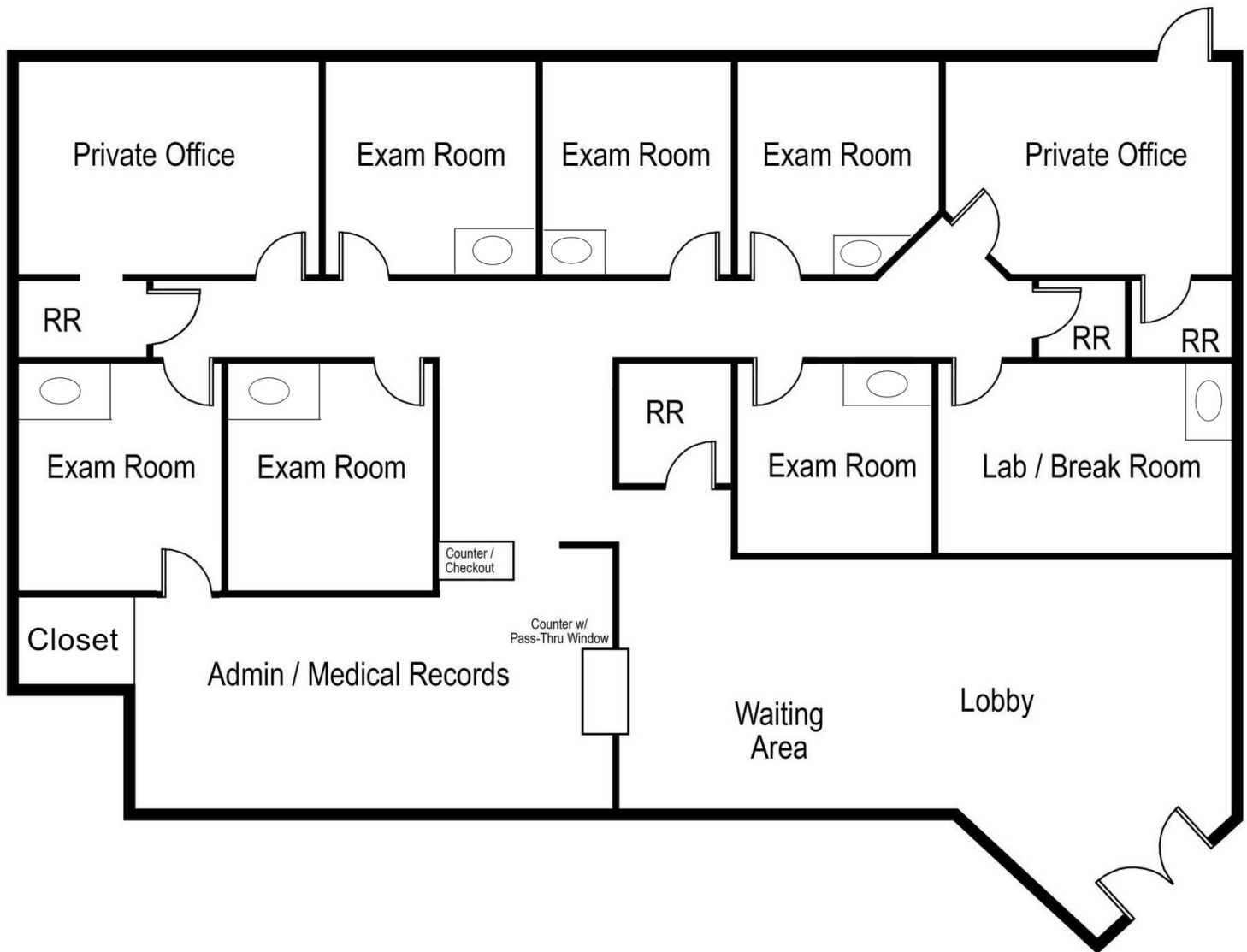
Available SF: Suite 1C - 2,430 SF
Suite 1D - 3,206 SF
Suite 2B - 1,375 SF
Suite 2C - 1,395 SF

Comments: The Arden Hill Medical Center provides turnkey ready medical spaces, abundant parking, monument signage, and covered patient drop off in a multi-tenant medical setting. This is a prime location for medical professionals to service the mature & dense working-class neighborhoods of West Orlando.

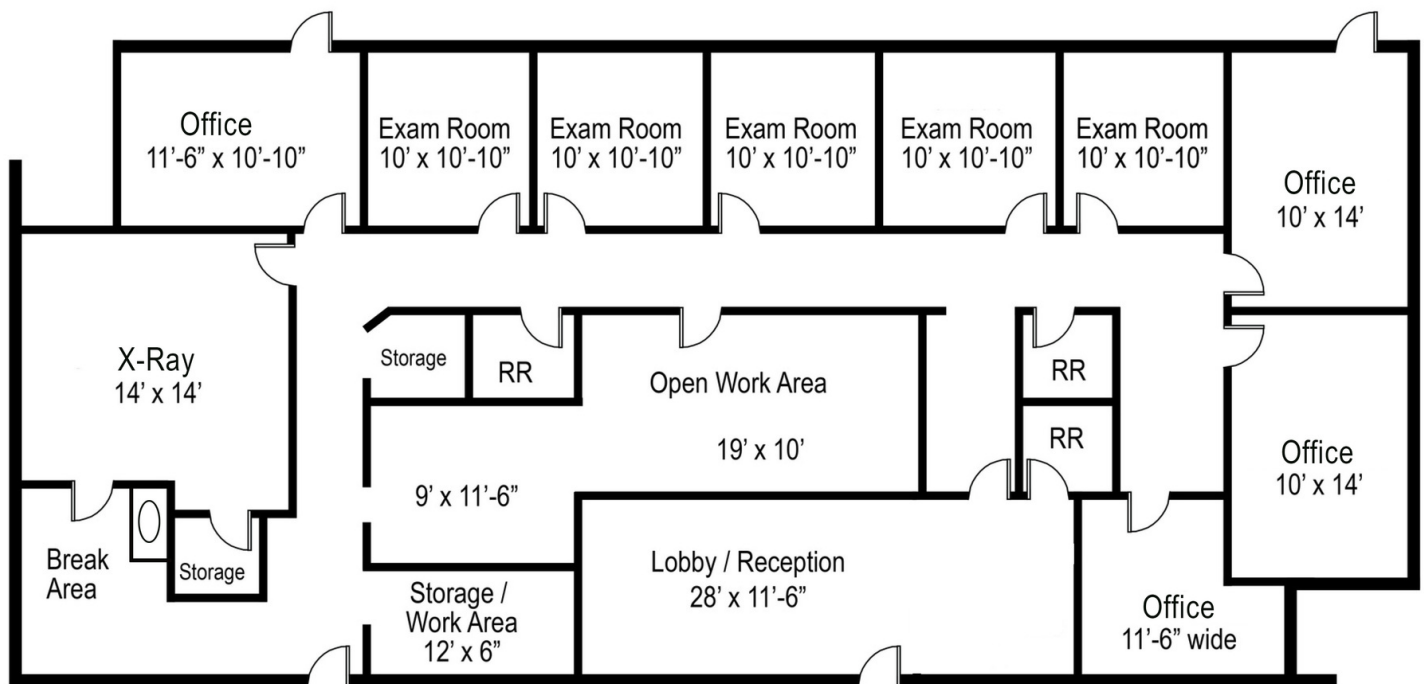
ECONOMIC DATA

Lease Rate: \$21.00 SF/yr (NNN)
CAM: \$6.69/SF

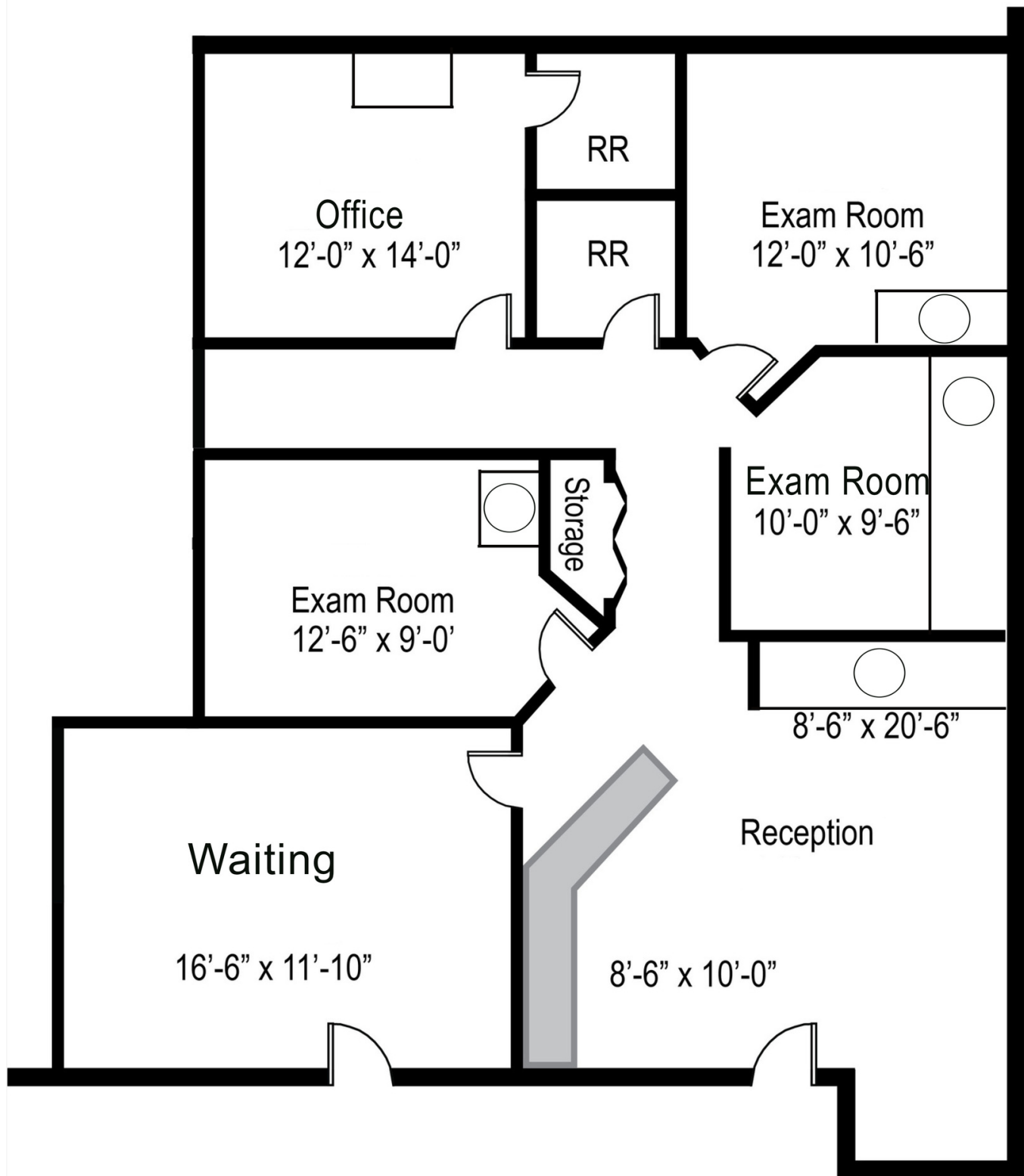




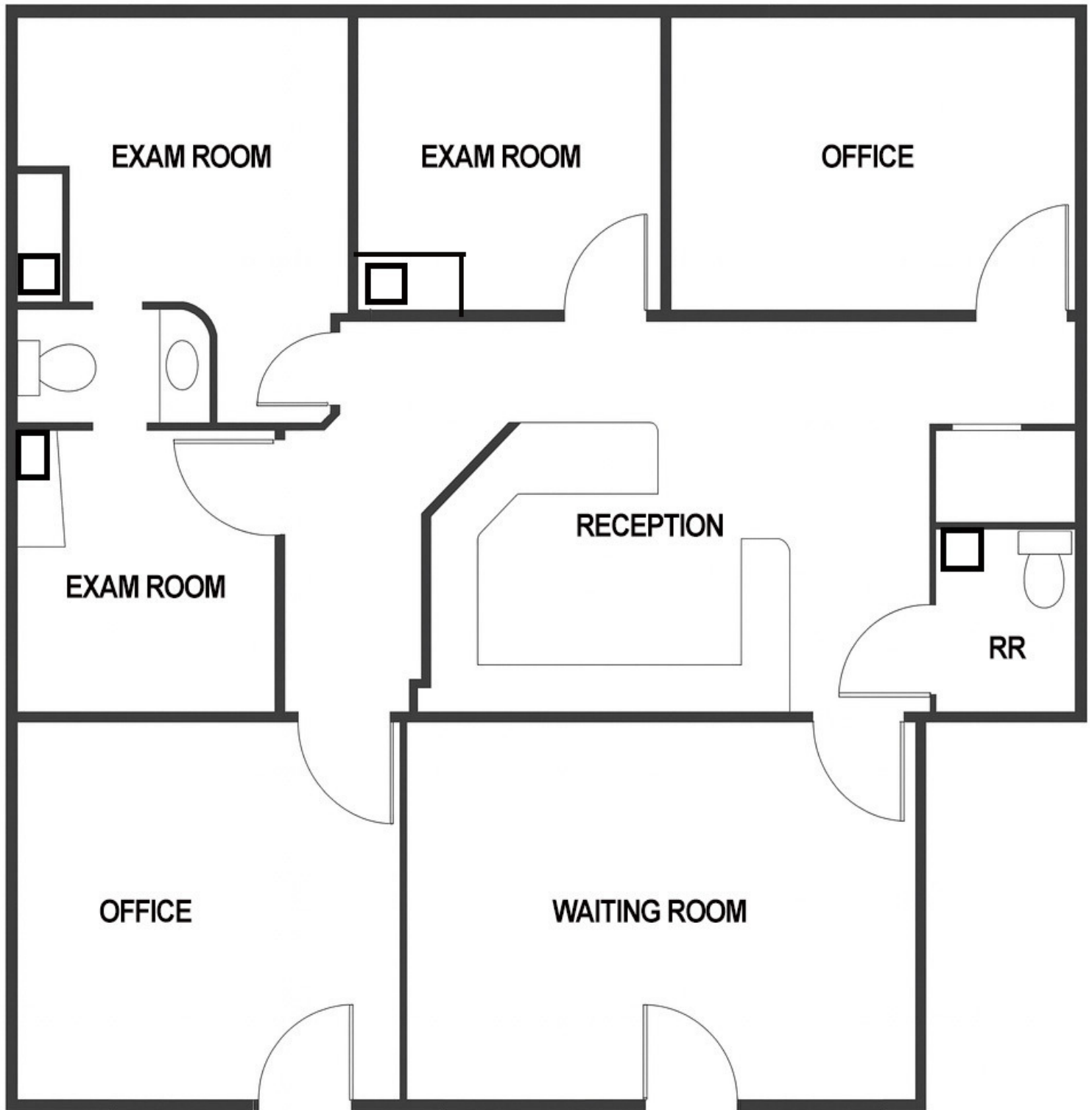
SUITE IC - 2,430 SF



SUITE ID - 3,206 SF



SUITE 2B - 1,375 SF



SUITE 2C - 1,395 SF