

Vacant Land 6 Acres

US Hwy 301, Summerfield, FL 34491

Offered at: \$1,600,000



Exclusively Listed By:

FRAN DANN-AKIN, SIOR

8550 NE 138th Lane, Suite 2000

The Villages, FL 32159

fran@franakin.com

Direct: (352) 266-7795



Executive Summary

Offered at: \$1,600,000

Incredible development opportunity on 6 acres with 950' (+/-) of highway frontage! New 7-Eleven and Marion County Medical Examiner's office located at SW corner of Hwy 301 & 42. Property has 4 acres zoned M1 and 2 acres A1. Located less than one mile from The Villages with possible access from busy signalized corner of Hwy 42. Convenient to I-75 and Florida Turnpike. Located in Marion County, Parcel ID 48378-000-00, the north 6 acres of subject ~8 acre parcel is available. AADT is 17,500 trips per day/US Hwy 301, 13,500 trips per day/SE Hwy 42 (FDOT-2024).



FRAN DANN-AKIN, SIOR
(352) 266-7795

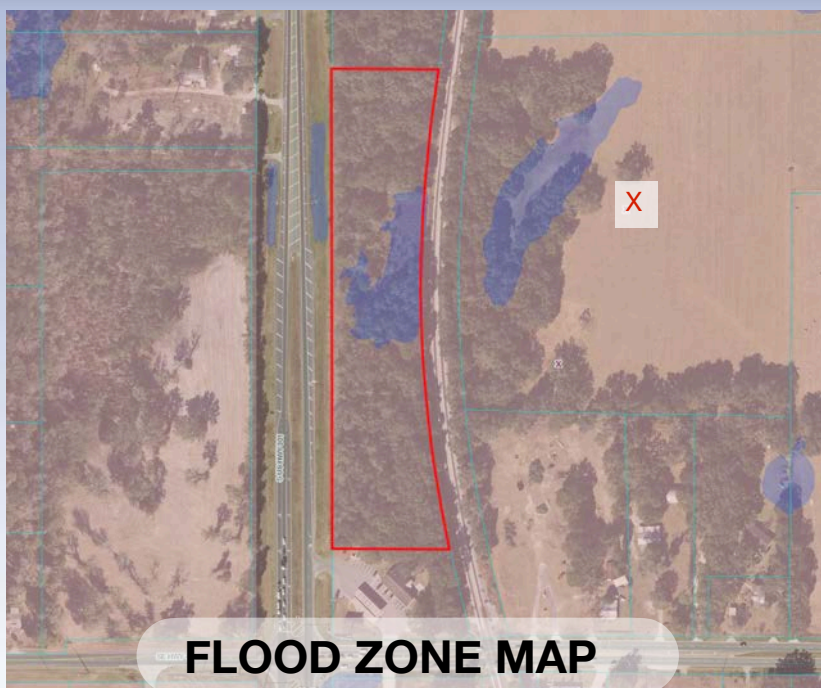
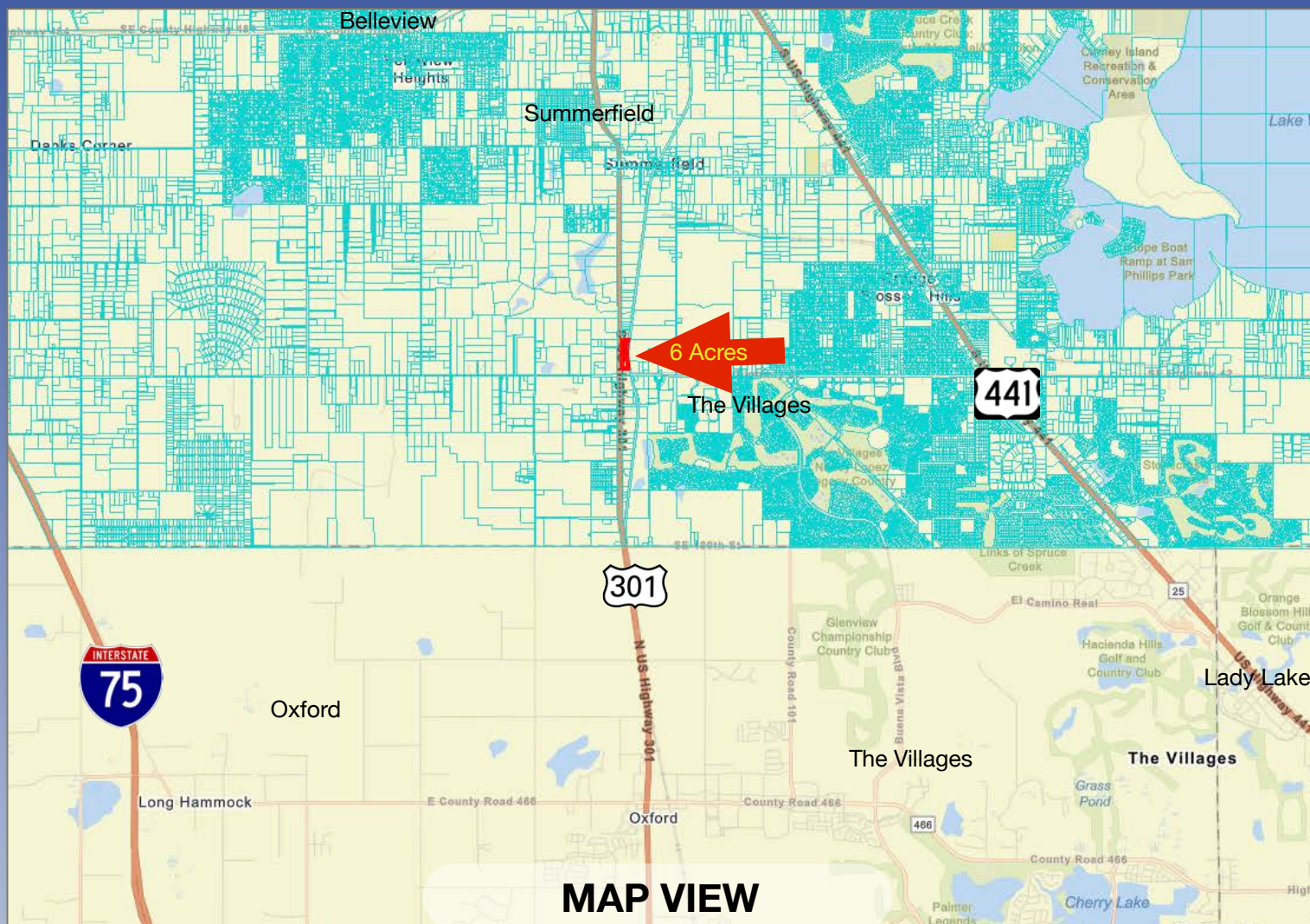


Aerial with Amenities

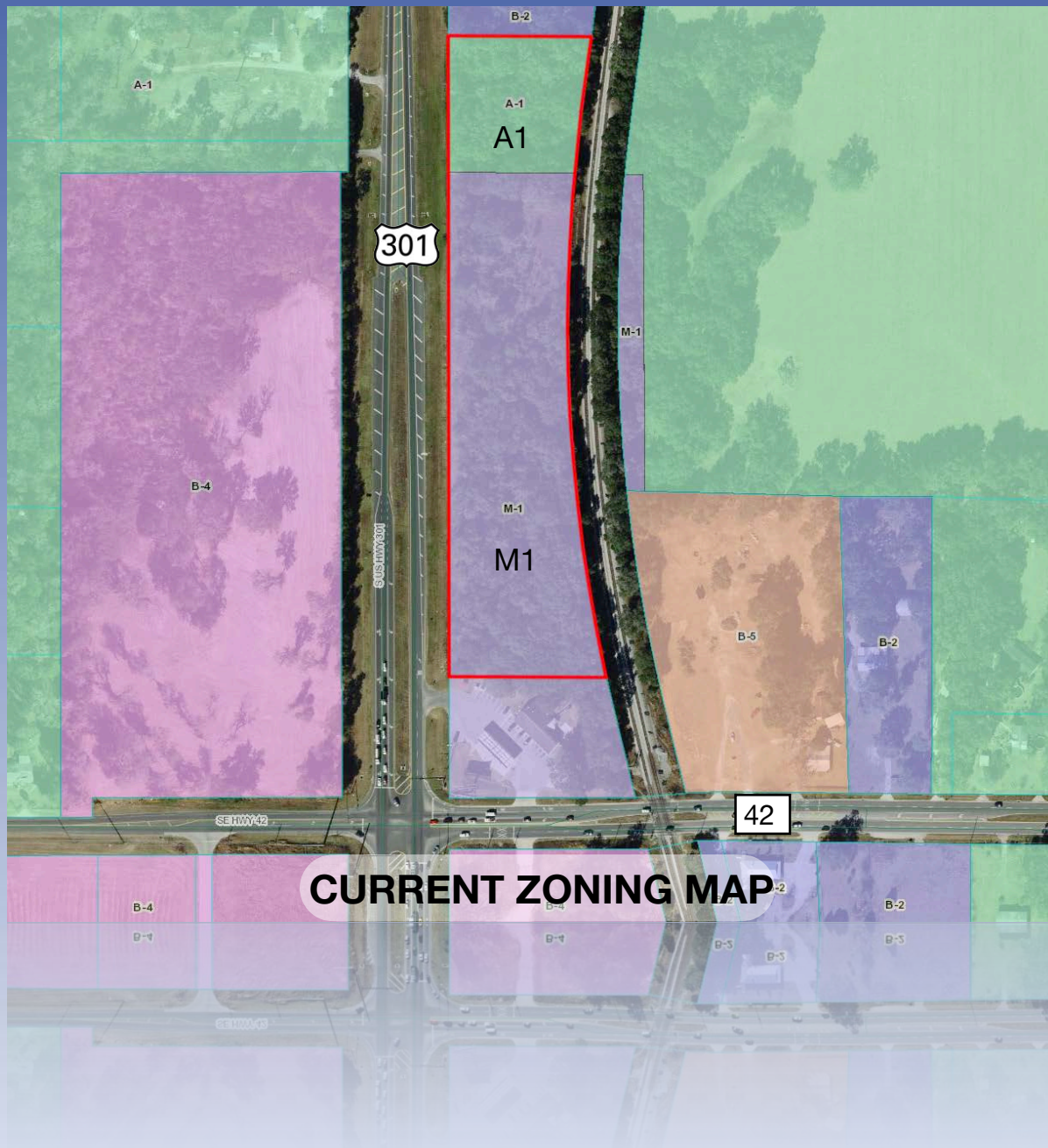


FRAN DANN-AKIN, SIOR
(352) 266-7795





Current Zoning Map



Street View





Demographic and Income Profile

16481 S Us Hwy 301, Summerfield, Florida, 34491
Ring: 5 mile radius

Prepared by Esri
Latitude: 28.98270
Longitude: -82.04044

Summary	Census 2010		Census 2020		2023		2028	
Population	57,167		62,658		63,458		64,778	
Households	27,528		30,721		31,307		32,307	
Families	19,498		19,577		20,644		20,764	
Average Household Size	2.08		2.03		2.02		2.00	
Owner Occupied Housing Units	24,617		26,366		26,734		27,812	
Renter Occupied Housing Units	2,912		4,355		4,573		4,495	
Median Age	64.6		66.9		67.4		70.0	
Trends: 2023-2028 Annual Rate	Area		State		National			
Population	0.41%		0.63%		0.30%			
Households	0.63%		0.77%		0.49%			
Families	0.12%		0.74%		0.44%			
Owner HHs	0.79%		0.93%		0.66%			
Median Household Income	2.29%		3.34%		2.57%			
Households by Income			2023		2028			
			Number	Percent	Number	Percent		
<\$15,000			2,466	7.9%	2,217	6.9%		
\$15,000 - \$24,999			2,733	8.7%	2,253	7.0%		
\$25,000 - \$34,999			3,033	9.7%	2,603	8.1%		
\$35,000 - \$49,999			4,390	14.0%	4,013	12.4%		
\$50,000 - \$74,999			6,944	22.2%	7,188	22.2%		
\$75,000 - \$99,999			5,402	17.3%	5,989	18.5%		
\$100,000 - \$149,999			3,694	11.8%	4,455	13.8%		
\$150,000 - \$199,999			1,649	5.3%	2,319	7.2%		
\$200,000+			996	3.2%	1,271	3.9%		
Median Household Income			\$58,353		\$65,337			
Average Household Income			\$78,237		\$89,734			
Per Capita Income			\$38,667		\$44,835			
Population by Age	Census 2010		Census 2020		2023		2028	
	Number	Percent	Number	Percent	Number	Percent	Number	Percent
0 - 4	1,557	2.7%	1,725	2.8%	1,561	2.5%	1,563	2.4%
5 - 9	1,672	2.9%	1,903	3.0%	1,682	2.7%	1,643	2.5%
10 - 14	1,715	3.0%	2,026	3.2%	1,747	2.8%	1,753	2.7%
15 - 19	1,777	3.1%	1,943	3.1%	1,673	2.6%	1,643	2.5%
20 - 24	1,440	2.5%	1,557	2.5%	1,582	2.5%	1,483	2.3%
25 - 34	2,996	5.2%	3,747	6.0%	3,808	6.0%	3,428	5.3%
35 - 44	3,541	6.2%	3,729	6.0%	3,695	5.8%	3,850	5.9%
45 - 54	4,813	8.4%	4,738	7.6%	4,058	6.4%	3,894	6.0%
55 - 64	9,585	16.8%	7,663	12.2%	7,728	12.2%	6,589	10.2%
65 - 74	17,870	31.3%	14,963	23.9%	20,033	31.6%	16,516	25.5%
75 - 84	8,547	15.0%	14,968	23.9%	13,360	21.1%	18,554	28.6%
85+	1,653	2.9%	3,696	5.9%	2,533	4.0%	3,863	6.0%
Race and Ethnicity	Census 2010		Census 2020		2023		2028	
	Number	Percent	Number	Percent	Number	Percent	Number	Percent
White Alone	53,374	93.4%	53,967	86.1%	54,255	85.5%	54,855	84.7%
Black Alone	1,615	2.8%	1,835	2.9%	1,945	3.1%	2,053	3.2%
American Indian Alone	135	0.2%	178	0.3%	189	0.3%	207	0.3%
Asian Alone	487	0.9%	803	1.3%	833	1.3%	903	1.4%
Pacific Islander Alone	17	0.0%	33	0.1%	35	0.1%	38	0.1%
Some Other Race Alone	903	1.6%	1,710	2.7%	1,839	2.9%	2,071	3.2%
Two or More Races	637	1.1%	4,132	6.6%	4,362	6.9%	4,650	7.2%
Hispanic Origin (Any Race)	3,448	6.0%	5,546	8.9%	5,947	9.4%	6,442	9.9%

Data Note: Income is expressed in current dollars.

Source: Esri forecasts for 2023 and 2028. U.S. Census Bureau 2020 decennial Census in 2020 geographies.

February 20, 2024

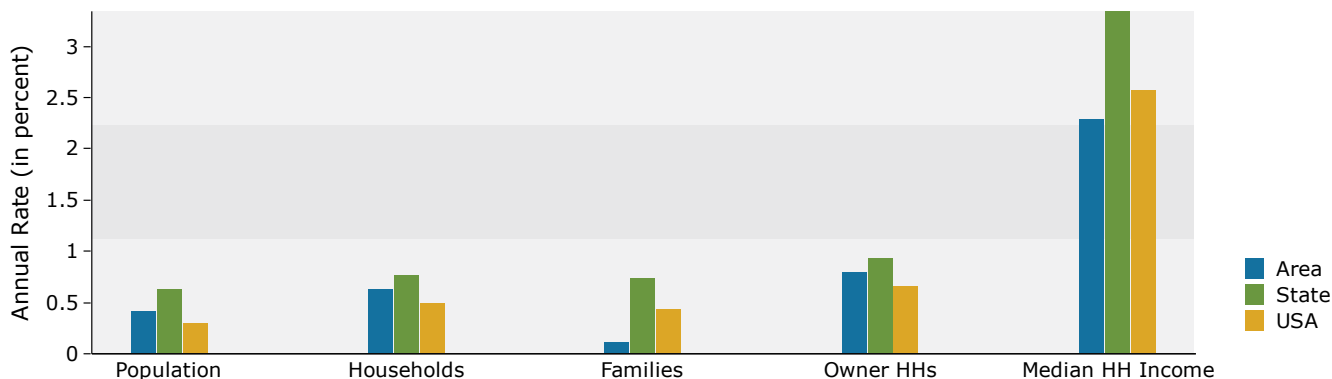


Demographic and Income Profile

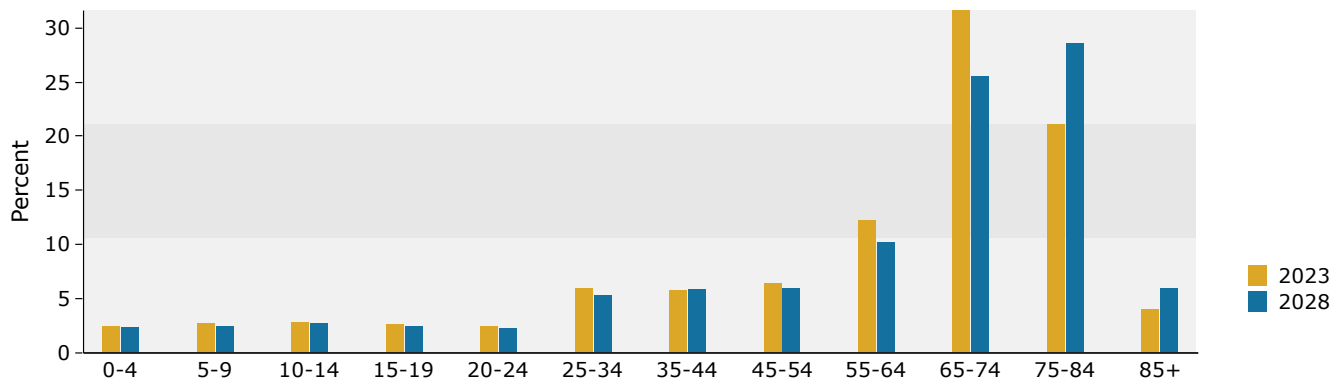
16481 S Us Hwy 301, Summerfield, Florida, 34491
Ring: 5 mile radius

Prepared by Esri
Latitude: 28.98270
Longitude: -82.04044

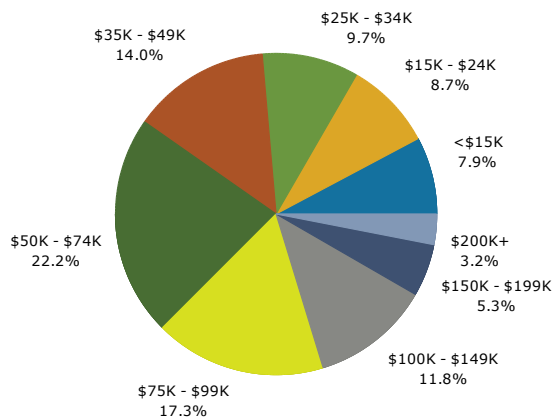
Trends 2023-2028



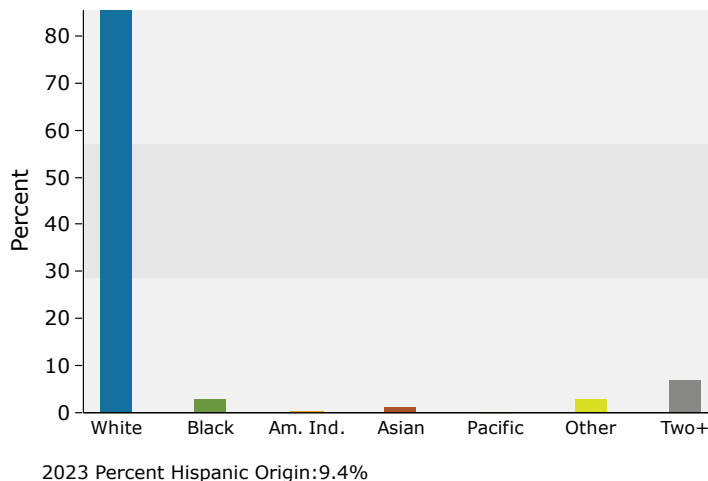
Population by Age



2023 Household Income



2023 Population by Race



Source: Esri forecasts for 2023 and 2028. U.S. Census Bureau 2020 decennial Census in 2020 geographies.

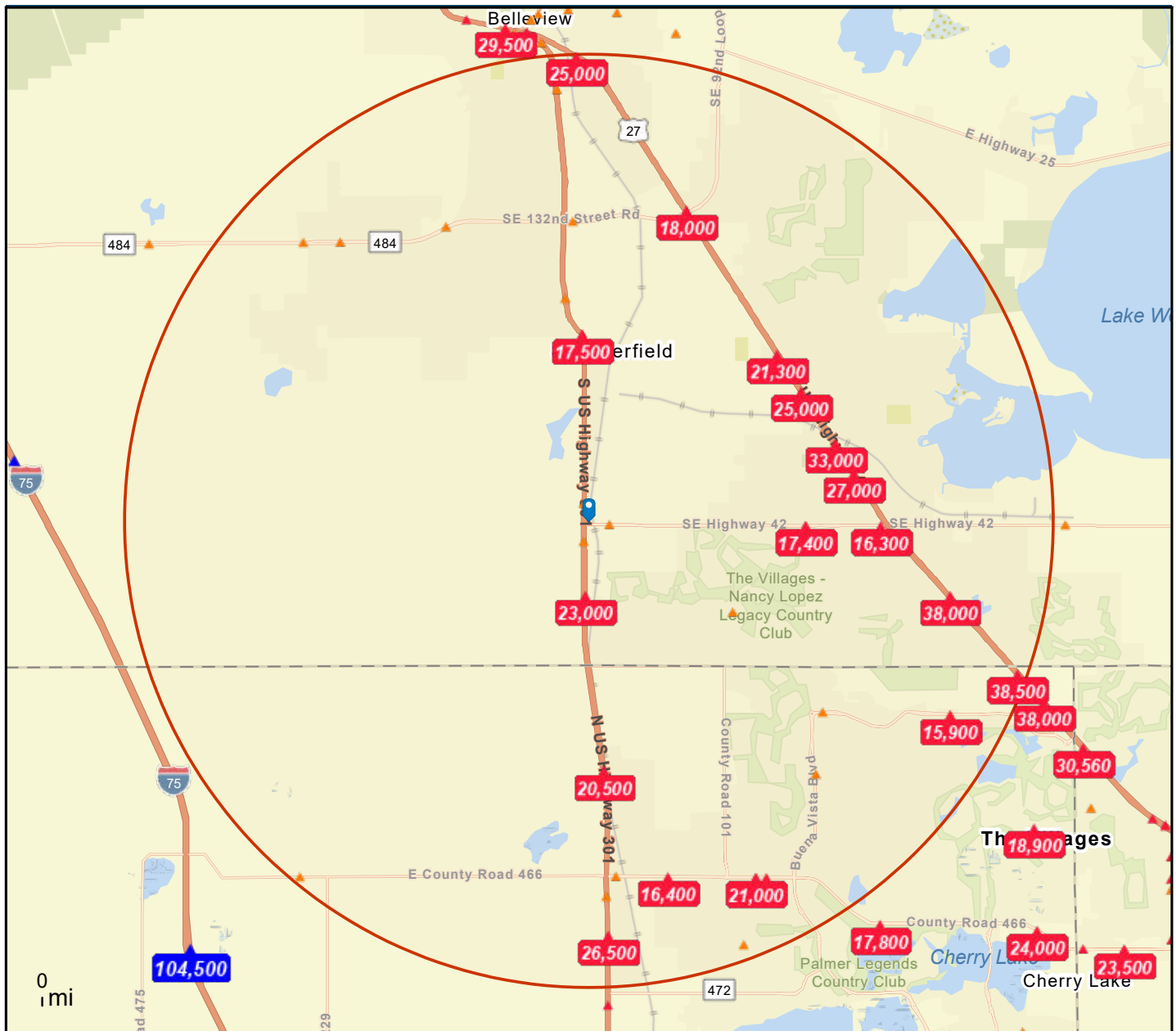
Traffic Count Map



Traffic Count Map

16481 S Us Hwy 301, Summerfield, Florida, 34491
Rings: 5 mile radii

Prepared by Esri
Latitude: 28.98270
Longitude: -82.04044



DISCLAIMER AKIN REALTY COMPANY. Although information has been obtained from sources deemed reliable, neither Owner nor ARC makes any guarantees, warranties, or representations, express or implied, as to the completeness or accuracy as to the information contained herein. Any projections, opinions, assumptions, or estimates used are for example only. There may be differences between projected and actual results, and those differences may be material. The Property may be withdrawn without notice. Neither Owner nor ARC accepts any liability for any loss or damage suffered by any party resulting from reliance on this information.