

FOR SALE

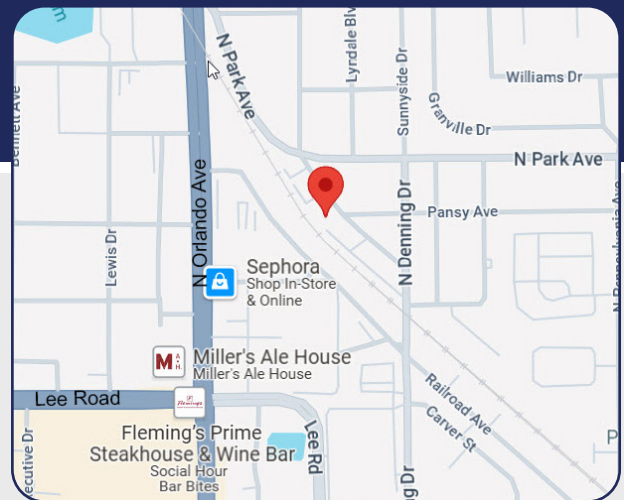


OFFICE BUILDING

1201 Louisiana Avenue, Winter Park, FL 32789

REDUCED TO \$2,700,000

- > One-story 6,757 SF office building on 0.53 acres
- > Built in 1973
- > Zoned O-1, City of Winter Park
- > Water, sewer, power - Winter Park; Waste - Winter Park/ Waste Pro)
- > Concrete block with stucco
- > Flat portion of roof replaced in July 2018
- > 28 parking spaces including one ADA
- > Occupants on short term leases; three tenants
- > Entire building can be occupied in 2025



Bill Bywater, CCIM

D 407.206.5736

O 407.206.7300

bill@bywater.com



1209 Edgewater Drive

Suite 100

Orlando, FL 32804

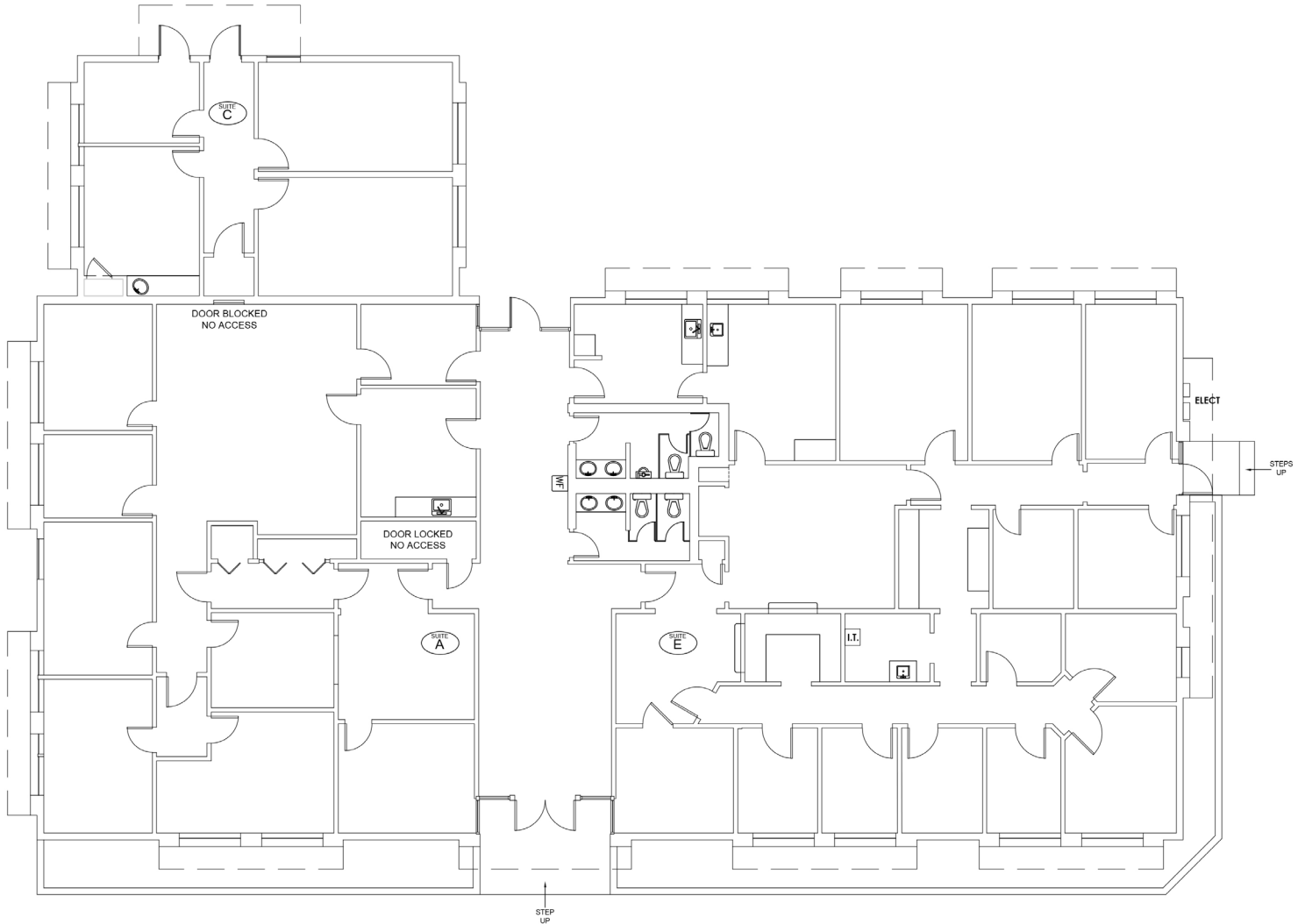
407.206.7300 Main

www.bywater.com

OFFICE BUILDING

1201 Louisiana Avenue, Winter Park, FL 32789

FLOOR PLAN



1209 Edgewater Drive, Suite 100 | Orlando, FL 32804 | 407.206.7300 | www.bywater.com

The information contained herein was obtained from sources deemed reliable and is assumed to be correct. It is not guaranteed by The Bywater Company.

OFFICE BUILDING

1201 Louisiana Avenue, Winter Park, FL 32789

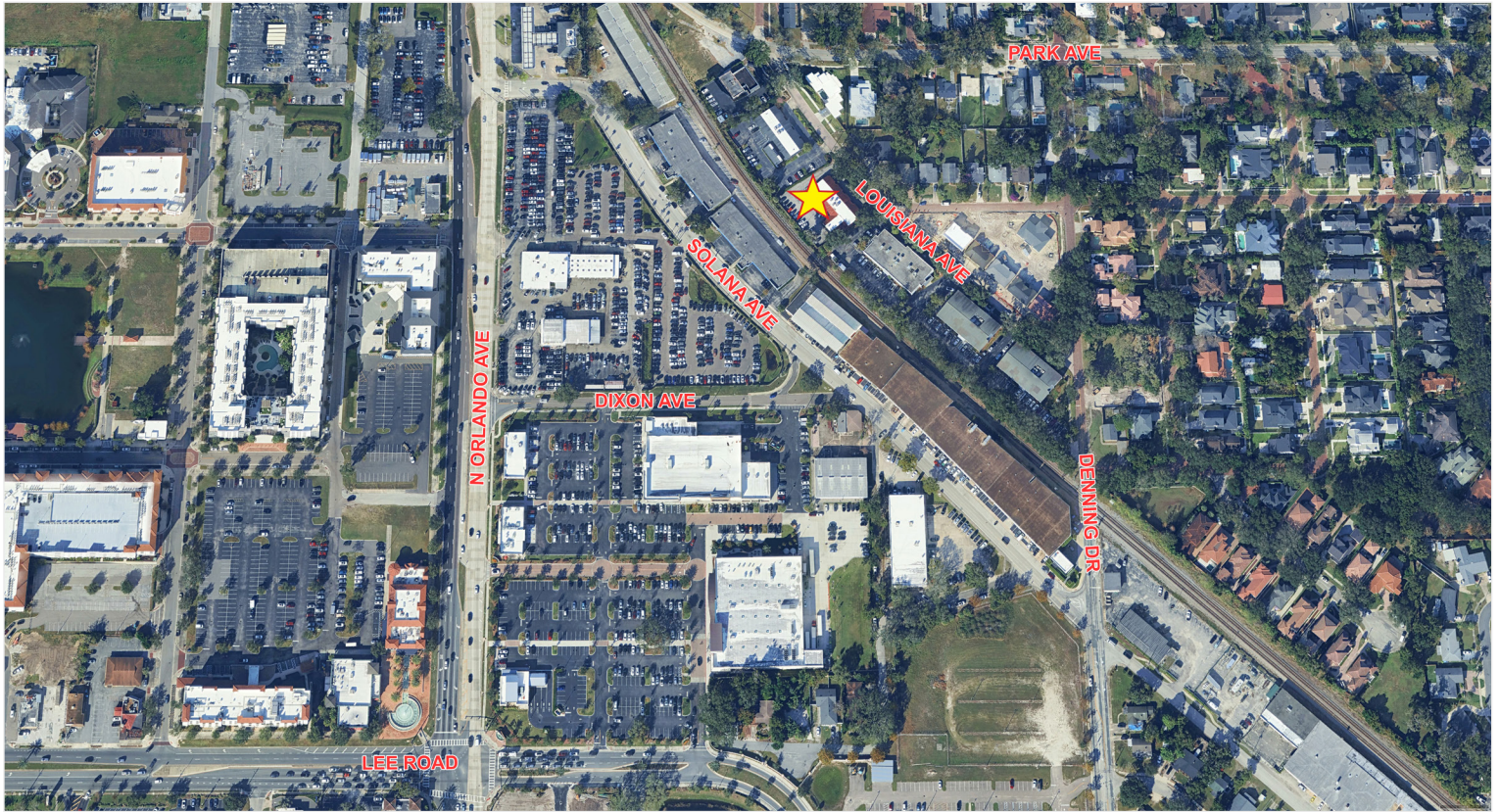


1209 Edgewater Drive, Suite 100 | Orlando, FL 32804 | 407.206.7300 | www.bywater.com

The information contained herein was obtained from sources deemed reliable and is assumed to be correct. It is not guaranteed by The Bywater Company.

OFFICE BUILDING

1201 Louisiana Avenue, Winter Park, FL 32789



1209 Edgewater Drive, Suite 100 | Orlando, FL 32804 | 407.206.7300 | www.bywater.com

The information contained herein was obtained from sources deemed reliable and is assumed to be correct. It is not guaranteed by The Bywater Company.