

FOR LEASE

- Two (2) office suites up to 930 sf available for immediate occupancy:
 - ❖ 2nd floor office Ste. 202: 601 sf
 - ❖ 3rd floor office Ste. 300: 930 sf
- Building with upscale finishes including granite and porcelain tile
- Large exterior signage
- Excellent access, visibility and parking!
- Outdoor patio and secured entrance
- Located on Grand Blvd. at the traffic lit corner of Gulf Dr. in downtown New Port Richey



5509 Grand Blvd. | New Port Richey, FL 34652

Lease Rate | \$14 psf Modified Gross

Palm Center

Lisa Ingram

Commercial Associate

Cell: (727) 946-7973

Office: (727) 376-4900

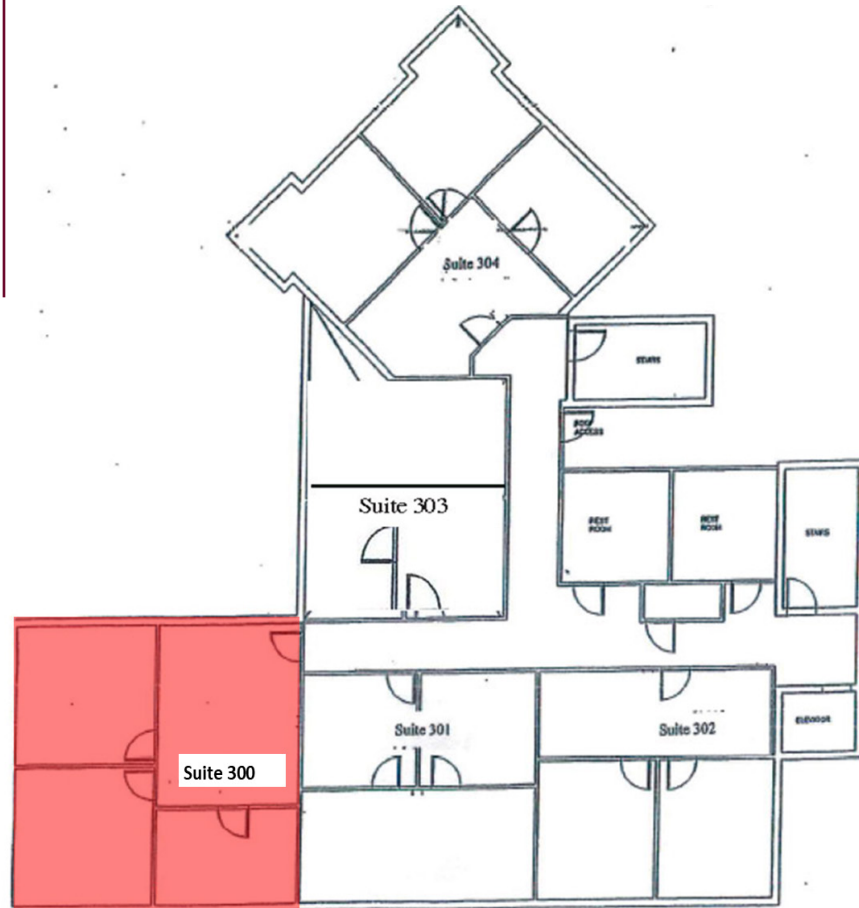
Lingram@cap-realty.com

CAP-Realty.com



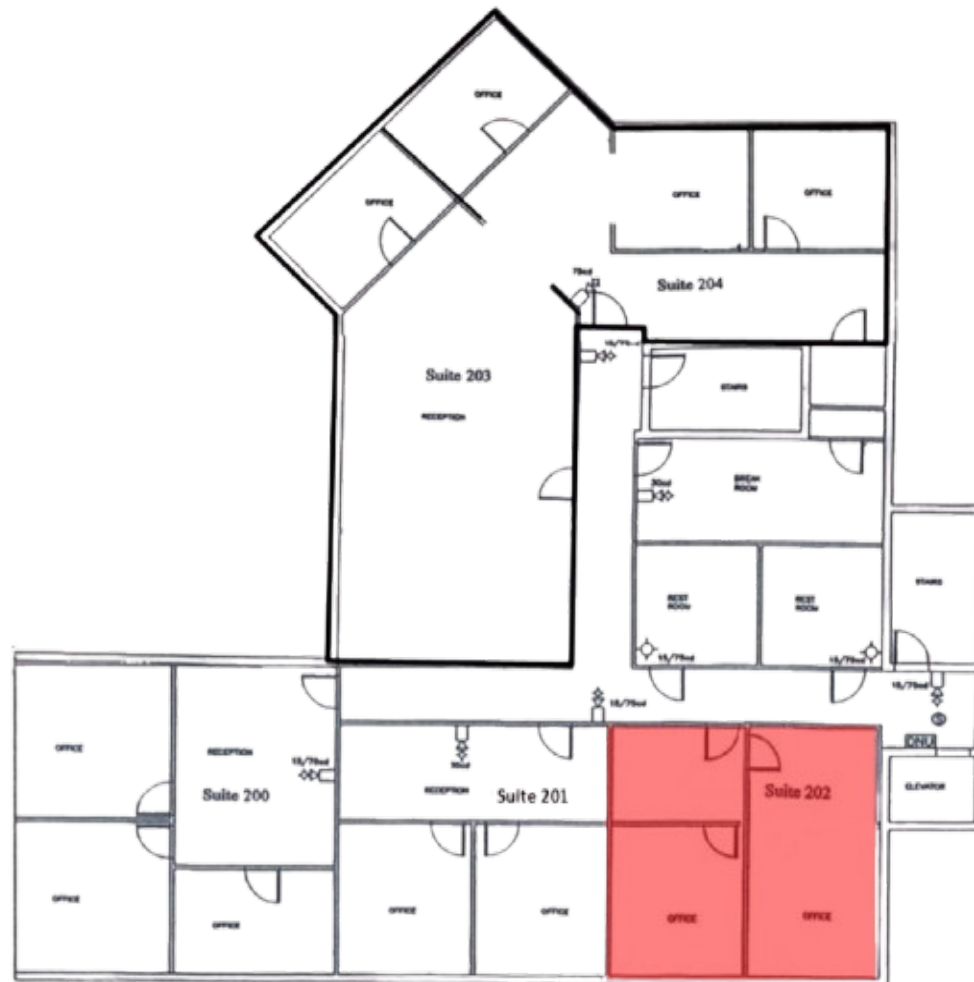
**COMMERCIAL ASSET
PARTNERS**

3rd Floor



Ste. 300:
930 sf Available

2nd Floor



Ste. 202:
601 sf Available



Demographics | 5 Miles



175,162

Population



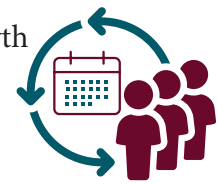
4.1%

Population Growth



\$63,287

Average HH Income



45.3

Median Age