

# FOR LEASE – TWO ACRES OF COMMERCIAL YARD SPACE WITH HIGHWAY FRONTAGE 16262 S HIGHWAY 475 SUMMERFIELD, FL 33324

## EXECUTIVE SUMMARY

## LAND FOR LEASE



### OFFERING SUMMARY

Available SF: 2 Acres

Lease Rate: \$5,000.00 per month  
(Gross)

Lot Size: 2 Acres

Zoning: B-4

### PROPERTY OVERVIEW

Position your business for success on Hwy 475, just under 5 miles from I-75. This versatile two-acre property consists of two connected parcels – 1 acre of B-4 zoning up front for customer-facing or retail-style use, and 1 acre of B-5 zoning in the rear, ideal for heavier commercial or industrial activity.

The property has been recently cleared and is ready for your operation—perfect for contractors, service companies, or any small business that needs both road-front exposure and secure yard or equipment storage space.

Tenants may install a mobile office structure to suit their specific needs and to meet local B-4/B-5 zoning requirements.

This is a rare opportunity to lease a high-visibility yard space with zoning flexibility at a value-driven rate. Electric & water at site.

### PROPERTY HIGHLIGHTS

- Prime highway frontage on a busy corridor
- Less than 5 minutes to I-75 for easy regional access
- Flexible dual-zoning (B-4/B-5) to accommodate a range of uses
- Wide-open cleared yard, ideal for parking, storage, or staging

FOR MORE INFORMATION CONTACT:

**Erin Freel** | Broker Associate, CCIM | 813.478.1735 | [erin@erinfreel.com](mailto:erin@erinfreel.com)

BOYD REAL ESTATE, LLC | 1720 SE 16th Ave #200, Ocala, FL 34471 | 352.861.2248 | [boydrealestategroup.com](http://boydrealestategroup.com)

This information has been obtained from sources believed reliable. We have not verified it and make no guarantee, warranty or representation about it. Any projections, opinions, assumptions or estimates used are for example only and do not represent the current or future performance of the property.

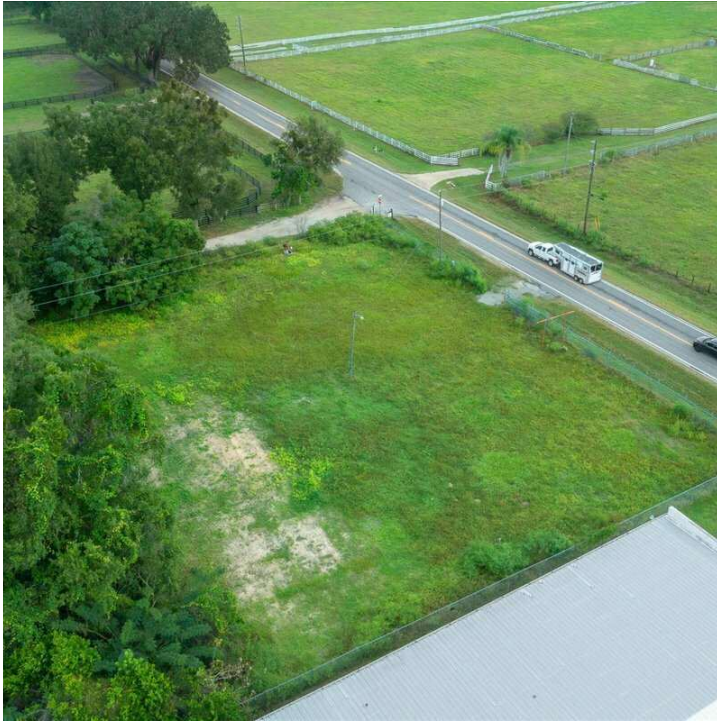




FOR LEASE – TWO ACRES OF COMMERCIAL YARD SPACE WITH HIGHWAY FRONTAGE  
16262 S HIGHWAY 475 SUMMERFIELD, FL 33324

ADDITIONAL PHOTOS

LAND FOR LEASE



FOR MORE INFORMATION CONTACT:

**Erin Freel** | Broker Associate, CCIM | 813.478.1735 | [erin@erinfreel.com](mailto:erin@erinfreel.com)

BOYD REAL ESTATE, LLC | 1720 SE 16th Ave #200, Ocala, FL 34471 | 352.861.2248 | [boydrealestategroup.com](http://boydrealestategroup.com)

