

# ±0.28 Acre Lot - For Sale

2733 SW Port St. Lucie Boulevard, Port St. Lucie, FL 34953

# NAI Southcoast

Central Baptist  
Church

ivy league  
ACADEMY



**SUBJECT**

**±0.28 ACRES**

amethyst  
Recovery Center

SW PORT ST LUCIE BLVD



*Presented by*

Douglas Legler

Principal | Broker Associate  
+1 772 405 7778  
douglas@naisouthcoast.com

Casey Combs

Broker Associate  
+1 772 285 8769  
ccombs@naisouthcoast.com

FOR SALE:

# \$125,000



# ±0.28 Acre Lot - For Sale

2733 SW Port St. Lucie Boulevard, Port St. Lucie, FL 34953

## Property Features

Location: 2733 SW Port St. Lucie Boulevard  
Port St. Lucie, FL 34953

Site Size: ±0.28 Acres

Parcel ID: 3420-705-0294-000-0

Frontage: 85' on SW Port St. Lucie Blvd.

Zoning: RS-2

Future Land Use: Residential / Office / Institutional

*Also Available:* ±0.24 acre lot at 2741 SW Port St. Lucie Blvd.

## Property Overview

2733 SW Port St. Lucie Boulevard offers a prime opportunity along one of Port St. Lucie's most active corridors. The ±0.28-acre parcel features 85 feet of frontage on SW Port St. Lucie Boulevard, providing excellent visibility and convenient access in a high-traffic area. With its strategic location, the property is well positioned for a variety of future uses that benefit from strong exposure and connectivity.

The site is currently zoned RS-2 with a Future Land Use designation of Residential, Office, or Institutional, allowing for flexible development potential to meet community and market needs. Whether for professional office space, institutional use, or residential purposes, this property offers adaptability in one of the fastest-growing regions of the Treasure Coast.

This parcel's location within Port St. Lucie—one of Florida's largest and most rapidly expanding cities—adds long-term value for developers, investors, or end-users seeking a well-situated site with strong growth potential.





# ±0.28 Acre Lot - For Sale

2733 SW Port St. Lucie Boulevard, Port St. Lucie, FL 34953

Looking Southwest





# ±0.28 Acre Lot - For Sale

2733 SW Port St. Lucie Boulevard, Port St. Lucie, FL 34953

Looking North

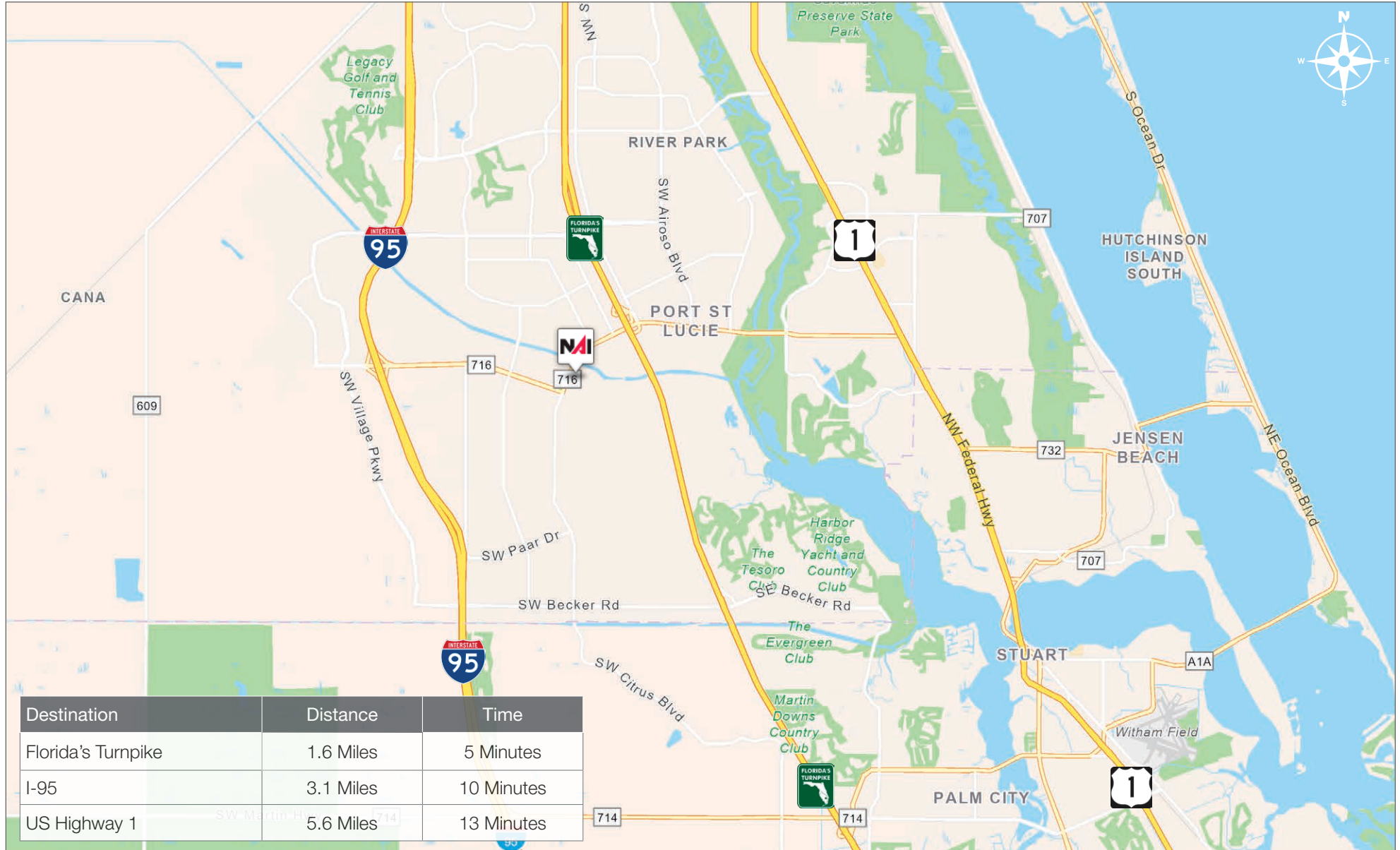




# ±0.28 Acre Lot - For Sale

2733 SW Port St. Lucie Boulevard, Port St. Lucie, FL 34953

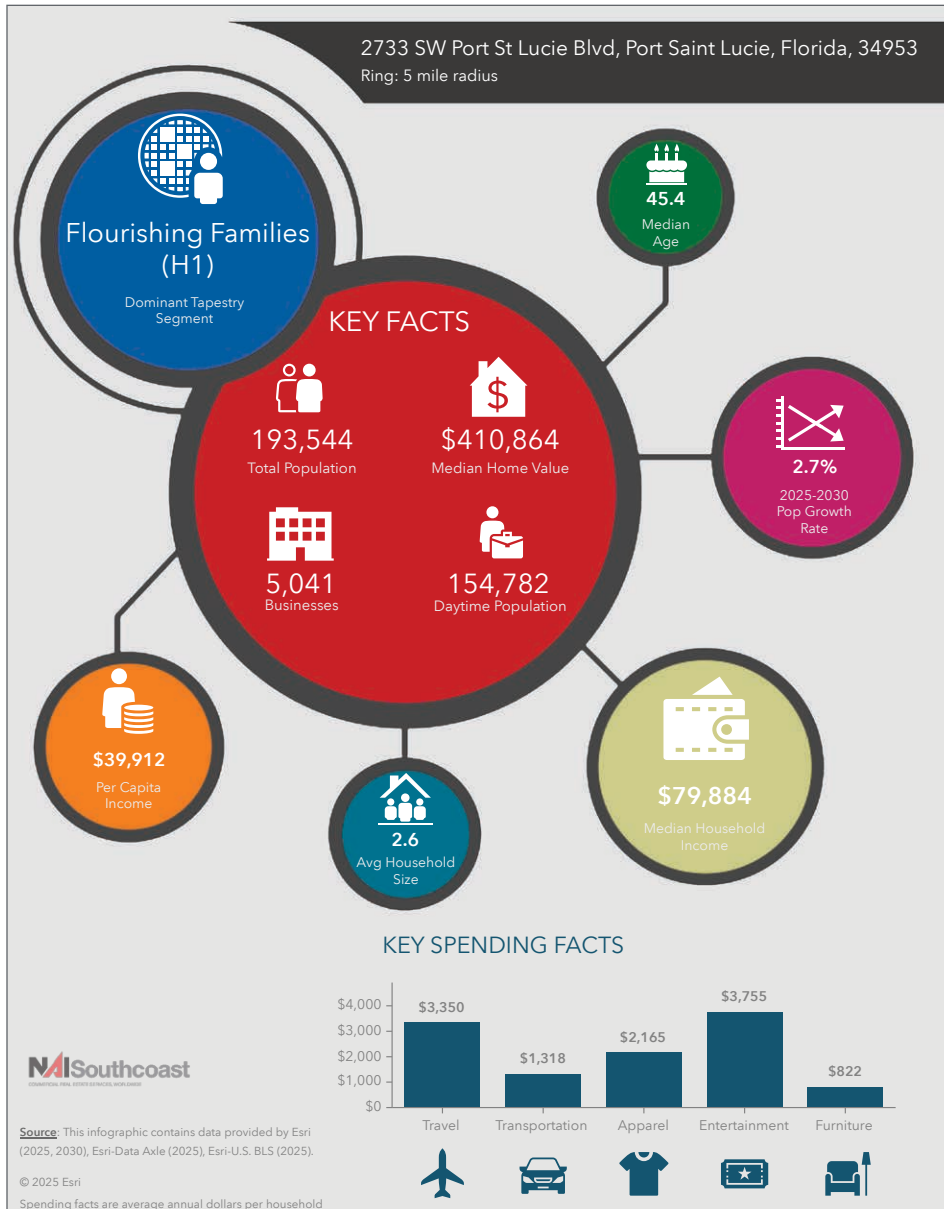
Drive Time



# ±0.28 Acre Lot - For Sale

2733 SW Port St. Lucie Boulevard, Port St. Lucie, FL 34953

## 2025 Demographics



### Population

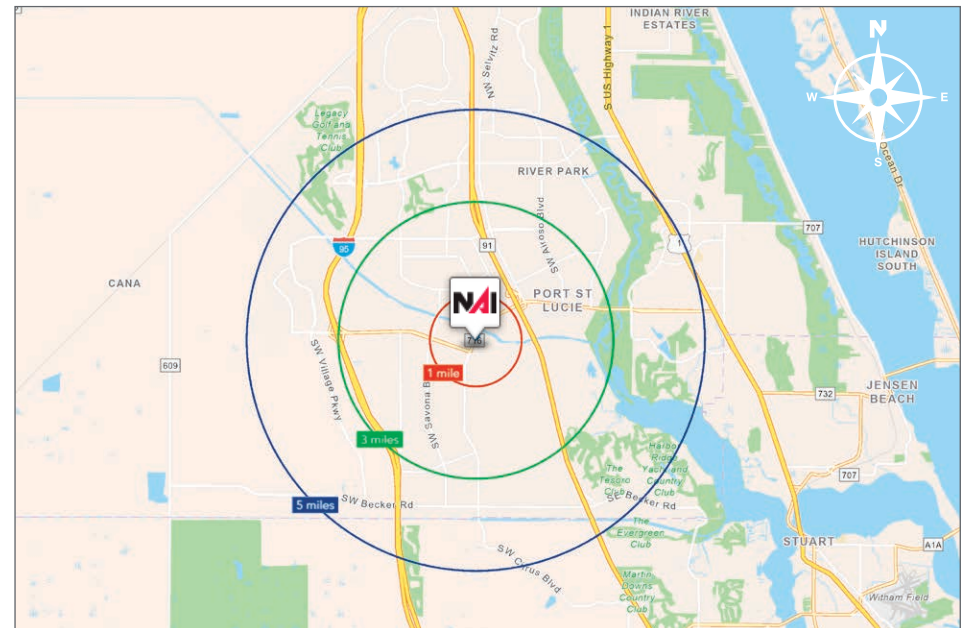
- 1 Mile: 12,286
- 3 Mile: 97,146
- 5 Mile: 193,544

### Average Household Income

- 1 Mile: \$90,697
- 3 Mile: \$103,095
- 5 Mile: \$105,491

### Median Age

- 1 Mile: 39.5
- 3 Mile: 40.5
- 5 Mile: 45.4





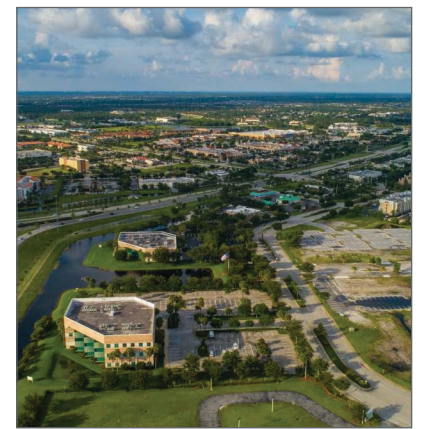
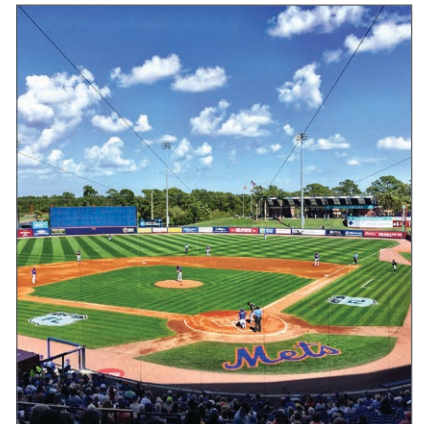
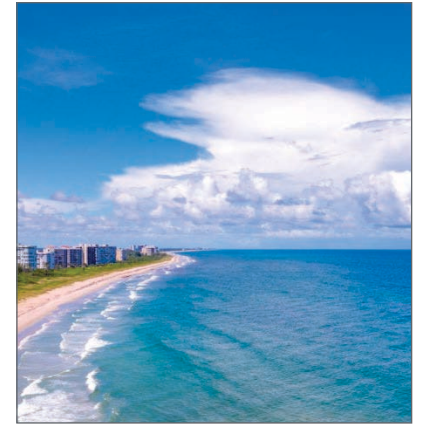
# County Overview

## St. Lucie County, Florida

Extensive, dependable transportation and easy access is the key to growth, and St. Lucie County has both in abundance. Interstate Highway 95 and U.S. Highway 1 provide easy access to the country's east coast, from Key West to Maine. The Florida Turnpike stretches from just south of Miami through northern-central Florida, while State Road 70 runs from U.S. Highway 1 in Fort Pierce west to Bradenton, Florida. St. Lucie County offers a plethora of transportation linkages which include rail, a custom-serviced international airport, and a deep-water port – all of which enable easy access to all St. Lucie County has to offer. The St. Lucie County International Airport is also one of the busiest general aviation airports in the state.

The county has a population of over 375,226 and has experienced growth of over 35% since 2010. The area economy is a blend of emerging life science R&D with traditional manufacturing, agriculture, tourism and services. St. Lucie County's natural resources are enviable, with more than 21 miles of pristine coastline and beaches, coral reefs, more than 20,000 acres of public parks and nature preserves, and miles of rivers and waterways. The area boasts over 20 public and semiprivate courses, with prices ranging from upscale to very affordable, and the great weather allows for play all year round. St. Lucie County is home to Clover Park in Port St. Lucie, the Spring training home of the New York Mets.

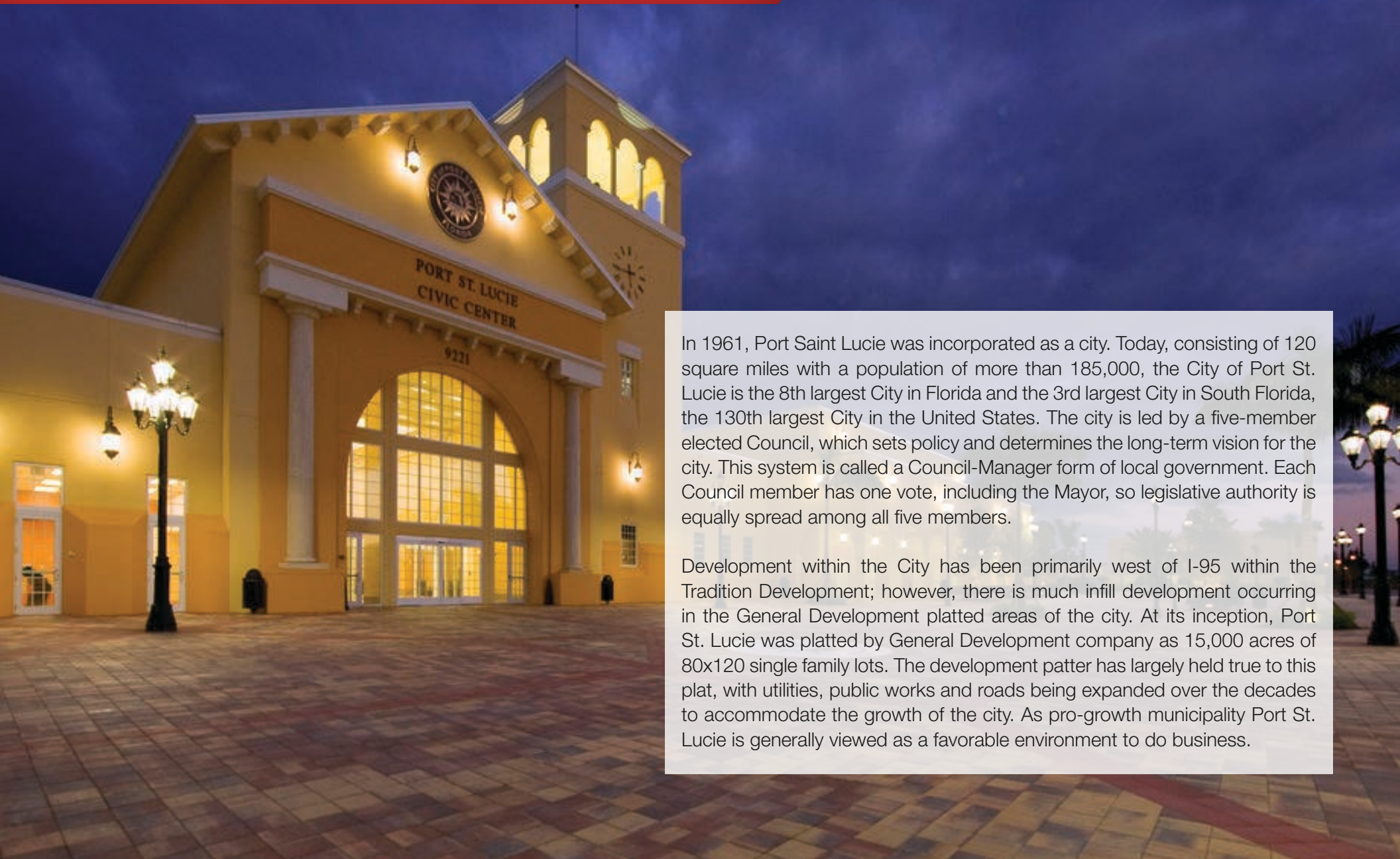
The county is host to Indian River State College, an institution that has won national recognition for excellence and innovation applied toward training and education. St. Lucie County boasts 52 schools with a total of 45,661 students and 8,800 staff. The Economic Development Council of St. Lucie County (EDC) is a non-profit organization with the goal of creating more, high-paying jobs for residents by working in concert on agreed upon strategies to promote the retention and expansion of existing businesses, as well as attracting new ones to St. Lucie County. Workers employed in St. Lucie County are clustered in the Health Care and Social Assistance (18.4%), and Retail Trade (11.9%) industries. Workers living in St. Lucie County are concentrated in the Health Care and Social Assistance (16.3%), and Retail Trade (14.1%) industries. Since 2017 the EDC has facilitated 40 expansion and new attraction job creating projects with a net growth of building area of approximately 6,500,000 square feet.





# City Overview

Port St. Lucie, Florida



In 1961, Port Saint Lucie was incorporated as a city. Today, consisting of 120 square miles with a population of more than 185,000, the City of Port St. Lucie is the 8th largest City in Florida and the 3rd largest City in South Florida, the 130th largest City in the United States. The city is led by a five-member elected Council, which sets policy and determines the long-term vision for the city. This system is called a Council-Manager form of local government. Each Council member has one vote, including the Mayor, so legislative authority is equally spread among all five members.

Development within the City has been primarily west of I-95 within the Tradition Development; however, there is much infill development occurring in the General Development platted areas of the city. At its inception, Port St. Lucie was platted by General Development company as 15,000 acres of 80x120 single family lots. The development pattern has largely held true to this plat, with utilities, public works and roads being expanded over the decades to accommodate the growth of the city. As pro-growth municipality Port St. Lucie is generally viewed as a favorable environment to do business.



*Presented by:*



**Douglas Legler**

Principal | Broker Associate  
+1 772 405 7778  
douglas@naisouthcoast.com



**Casey Combs**

Broker Associate  
+1 772 285 8769  
ccombs@naisouthcoast.com

## ±0.28 Acre Lot - For Sale

2733 SW Port St. Lucie Boulevard, Port St. Lucie, FL 34953



FOR SALE:

# \$125,000