



OFFICE BUILDING **FOR SALE** \$1,100,000

300 E NEW HAVEN AVE

Melbourne, FL 32901

BRIAN L. LIGHTLE, CCIM, SIOR, CRE

Founder | Broker Associate
321.863.3228
Brian@TeamLBR.com

ROB BECKNER, SIOR

Principal
321.722.0707 x11
Rob@TeamLBR.com



LIGHTLE BECKNER ROBISON
INCORPORATED
COMMERCIAL REAL ESTATE SERVICES



PROPERTY DESCRIPTION

Prominent Multi-Tenant Office Building - LOCATION ! LOCATION ! LOCATION !

Gateway to Charming Downtown Melbourne At the Arched Welome Sign

Two Story Building - Multi-Tenant or Single Tenant Full Building Use

Private Offices and Open Work Areas

Kitchen / Break Area

Parking Lot in Front of Building

Brick Siding Over Wood Frame

Ceramic Tile Roof

Interior Has Wood Paneling and Red Carpeting , A Prominent Feature in Interior Design in the 80's

Design approaches offer numerous ways to transform this retro element into a stylish focal point that complements contemporary aesthetics.

OFFERING SUMMARY

Sale Price:	\$1,100,000
Number of Units:	2
Lot Size:	0.27 Acres
Building Size:	4,886 SF

DEMOGRAPHICS	0.3 MILES	0.5 MILES	1 MILE
Total Households	385	1,340	3,761
Total Population	624	2,355	8,454
Average HH Income	\$50,113	\$51,260	\$63,465

PROPERTY HIGHLIGHTS

- Prime investment opportunity or End User
- Spacious 4,886 SF building
- Consists of 2 separate units
- Established in 1986
- Versatile C I zoning
- Strategic Melbourne location

BRIAN L. LIGHTLE, CCIM, SIOR, CRE

Founder | Broker Associate

321.863.3228

Brian@TeamLBR.com

ROB BECKNER, SIOR

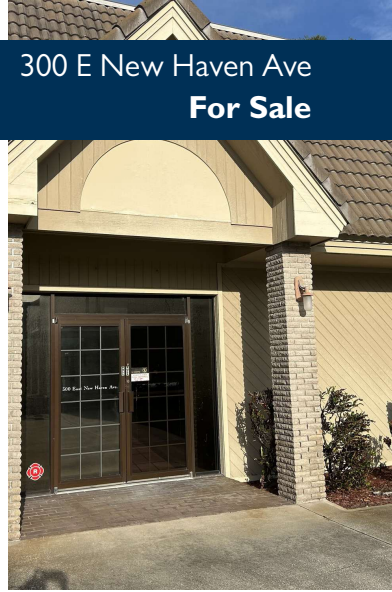
Principal

321.722.0707 x11

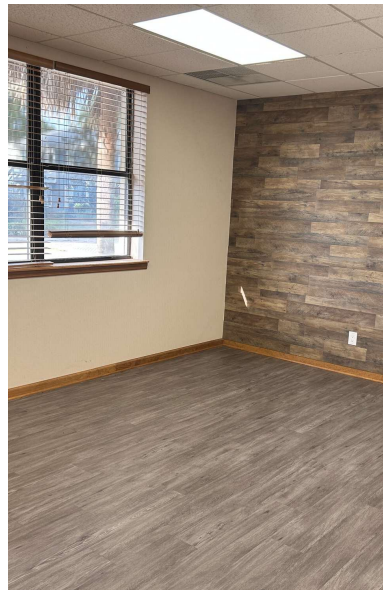
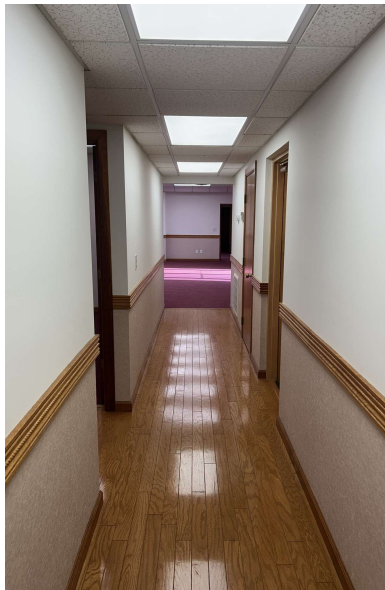
Rob@TeamLBR.com



Additional Photos



300 E New Haven Ave
For Sale



BRIAN L. LIGHTLE, CCIM, SIOR, CRE

Founder | Broker Associate
321.863.3228
Brian@TeamLBR.com

ROB BECKNER, SIOR

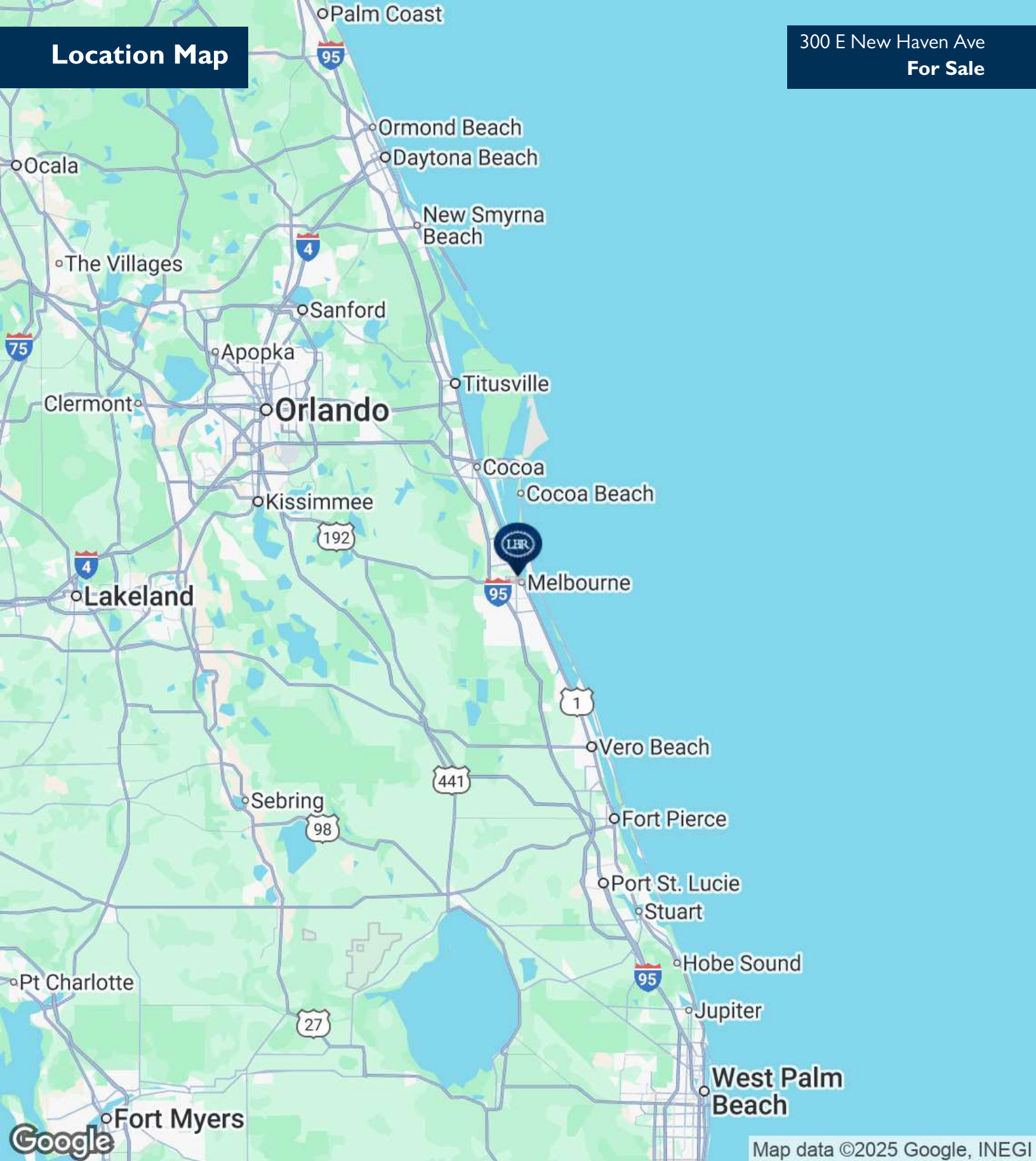
Principal
321.722.0707 x11
Rob@TeamLBR.com



Information contained herein has been obtained through sources deemed reliable but cannot be guaranteed as to its accuracy. A purchaser or lessee is expected to verify all information to his/her own satisfaction. Zoning information subject to change and not warranted. Always confirm current requirements with local governing agencies.

Location Map

300 E New Haven Ave
For Sale



BRIAN L. LIGHTLE, CCIM, SIOR, CRE

Founder | Broker Associate
321.863.3228
Brian@TeamLBR.com

ROB BECKNER, SIOR

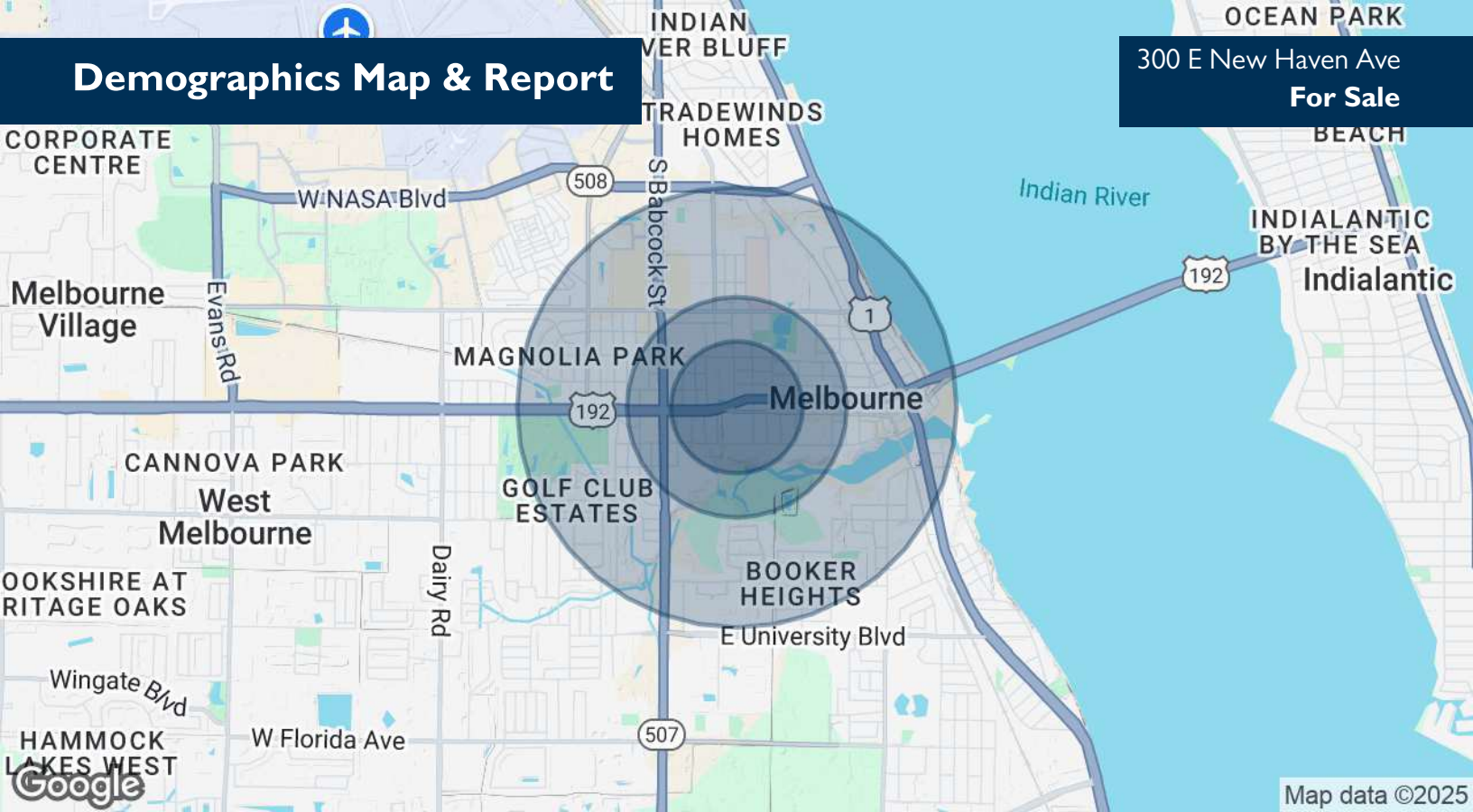
Principal
321.722.0707 x11
Rob@TeamLBR.com



Information contained herein has been obtained through sources deemed reliable but cannot be guaranteed as to its accuracy. A purchaser or lessee is expected to verify all information to his/her own satisfaction. Zoning information subject to change and not warranted. Always confirm current requirements with local governing agencies.

Demographics Map & Report

300 E New Haven Ave
For Sale



POPULATION

0.3 MILES

0.5 MILES

1 MILE

Total Population	624	2,355	8,454
Average Age	55	52	47
Average Age (Male)	51	48	44
Average Age (Female)	57	55	50

HOUSEHOLDS & INCOME

0.3 MILES

0.5 MILES

1 MILE

Total Households	385	1,340	3,761
# of Persons per HH	1.6	1.8	2.2
Average HH Income	\$50,113	\$51,260	\$63,465
Average House Value	\$375,011	\$345,174	\$290,220

Demographics data derived from AlphaMap

BRIAN L. LIGHTLE, CCIM, SIOR, CRE

Founder | Broker Associate
321.863.3228
Brian@TeamLBR.com

ROB BECKNER, SIOR

Principal
321.722.0707 x11
Rob@TeamLBR.com



Information contained herein has been obtained through sources deemed reliable but cannot be guaranteed as to its accuracy. A purchaser or lessee is expected to verify all information to his/her own satisfaction. Zoning information subject to change and not warranted. Always confirm current requirements with local governing agencies.