



JOHN STANLEY  
&  
ASSOCIATES

COMMERCIAL REAL ESTATE



Two Corner Lots  
Troy Hwy. & Christine Elizabeth Curve  
Montgomery, AL 36116

FOR SALE

<b>Sale Price</b>	\$450,000.00 (+/- 11.07 Acres)
<b>Sale Price</b>	\$250,000.00 (+/- 5.46 Acres)
<b>Zoning</b>	B-3
<b>Traffic Count</b>	33,474 (ALDOT 2024)
<b>Best Use</b>	Convenience Store, QSR, Retail, Mini Warehouse
<b>Visibility</b>	Excellent
<b>Possession</b>	Immediate
<b>Listing Type</b>	Exclusive

Two corner commercial lots with great visibility, access and traffic counts at a SIGNALIZED intersection. Great for convenience store, QSR, retail, mini warehouse or many other business uses. Contact Lee Meriwether, CCIM, for more information at (334) 398-1808.

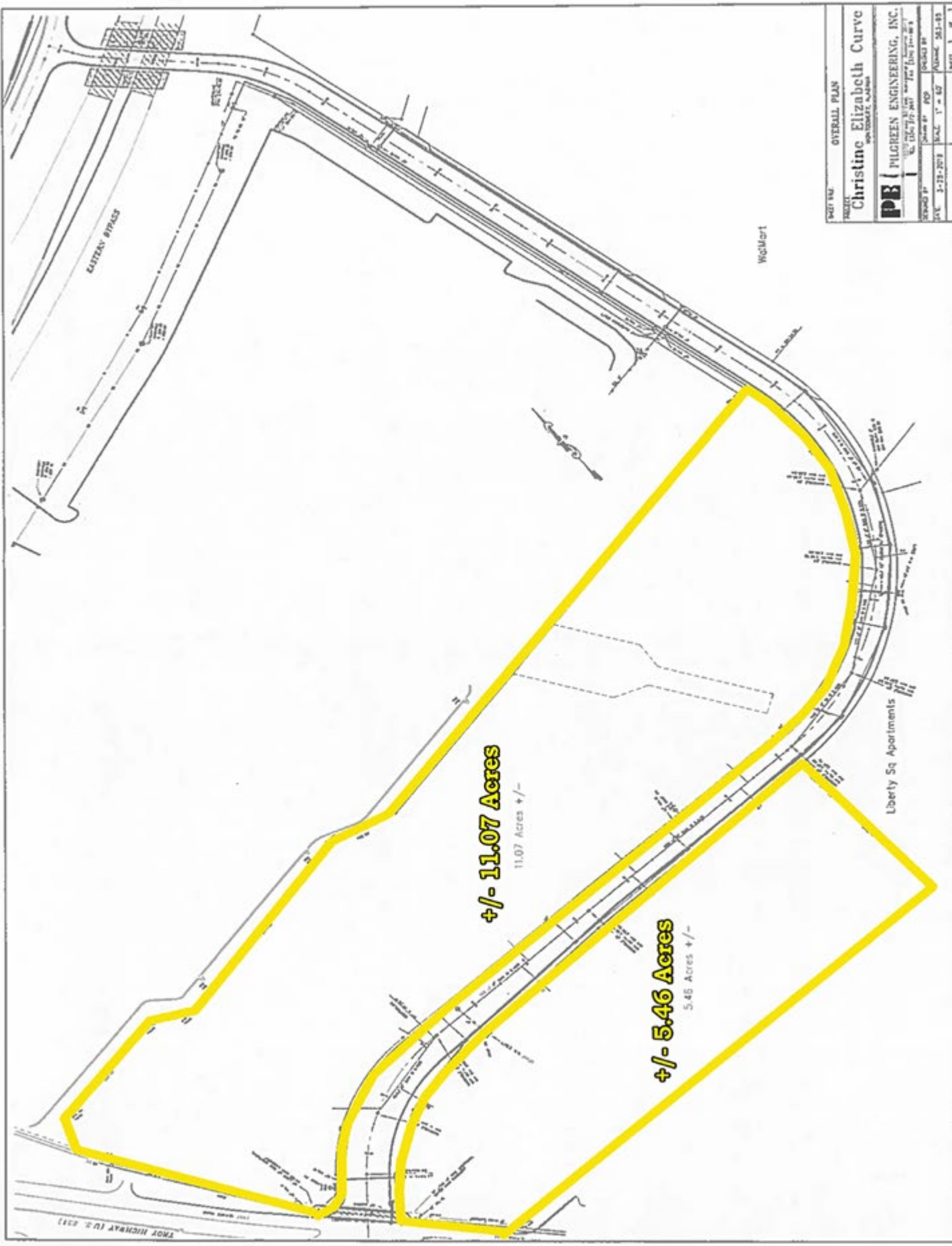


Lee W. Meriwether, CCIM  
John Stanley & Associates, Inc.  
4747 Woodmere Blvd. ■ Montgomery, AL 36106  
(334) 271-2475 voice ■ (334) 398-1808 cell  
(334) 271-2421 fax  
lmeriwether@johnstanleyassociates.com  
www.johnstanleyassociates.com



All information is from sources deemed reliable, but no warranty is made as to the accuracy thereof and same is submitted subject to errors, omissions, change of price, or other conditions, such as prior sales or withdrawal without notice by John Stanley & Associates, Inc. or the Owner.

09/29/2025



OVERALL PLAN	
Christine Elizabeth Curve	
PILGREEN ENGINEERING, INC.	
1100 S. 10th St. Suite 100 Greensboro, NC 27402	
DATE	3-21-2018
PROJECT	251-23
SCALE	1" = 60'
BY	WJL
CHECKED BY	WJL
DATE	3-21-2018