



For Sale

# Retail/Office Building

5,210 SF | \$800,000

## 148 South Beach Street

Daytona Beach, Florida 32114

### Property Highlights

- Attractive 5,210± SF, two-story building in Historic Downtown Daytona Beach district
- Retail space with direct frontage on Beach Street on 1st floor
- Professional office space on 2nd floor; move-in ready
- On main retail corridor of Downtown Daytona Beach
- Ample foot traffic; surrounded by restaurants and retail
- Adjacent to upscale Tom Cook Jewelry and 2 doors down from busy Angell & Phelps Chocolate Factory
- Great location one block off International Speedway Blvd
- Walking distance to Volusia County Courthouse Annex
- Across the street from Riverfront Park and City Island
- Traffic: 9,250 AADT



**Sale Price: \$800,000**

For more information

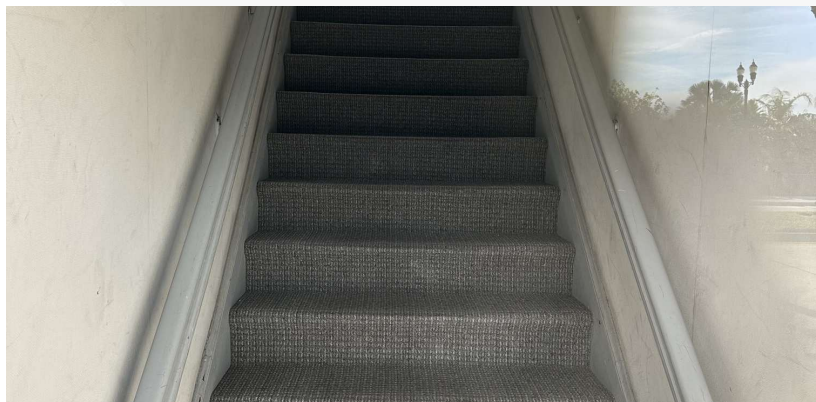
**Brad Gifford**

O: 386 506 0037

bgifford@realvest.com

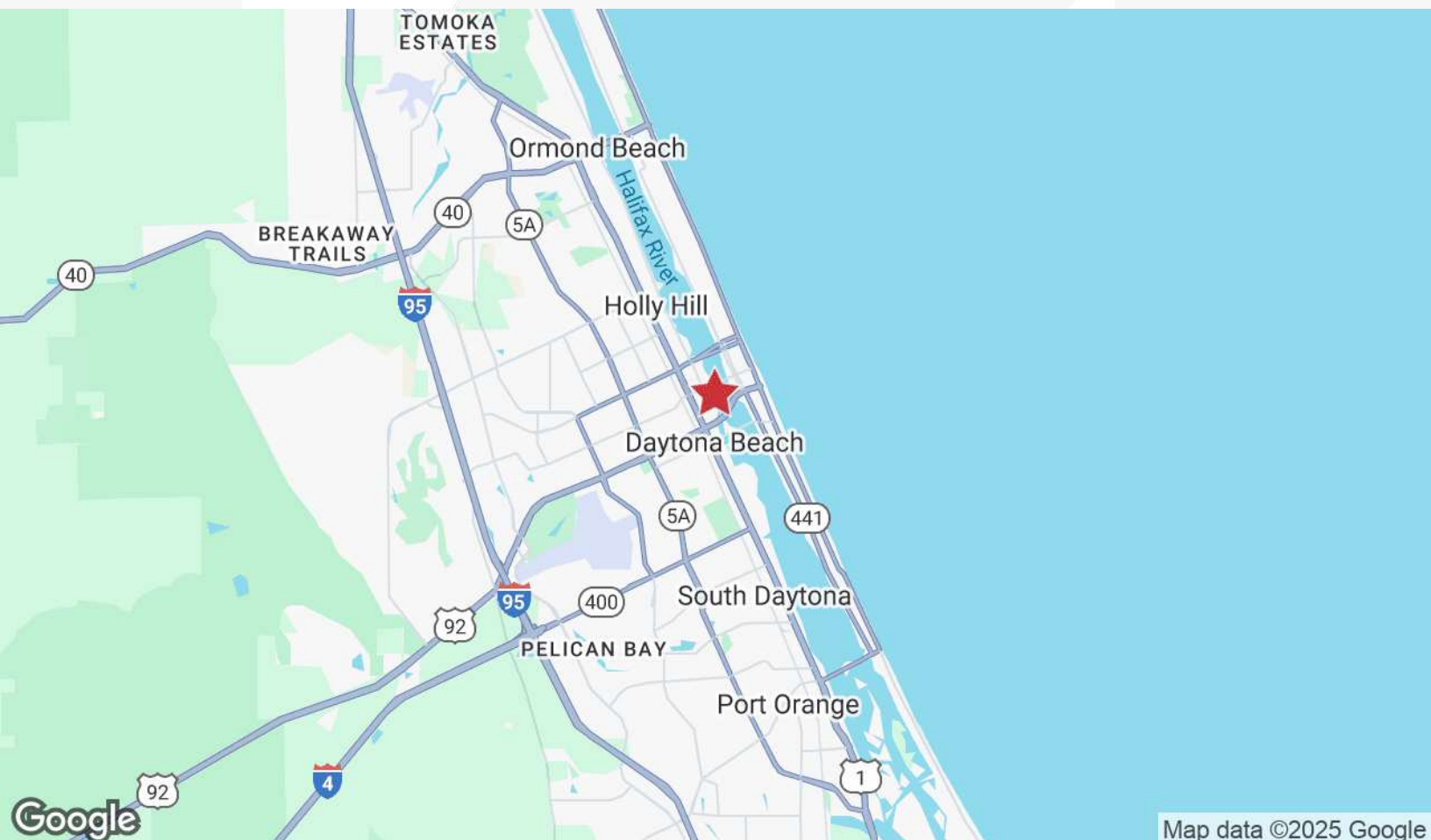
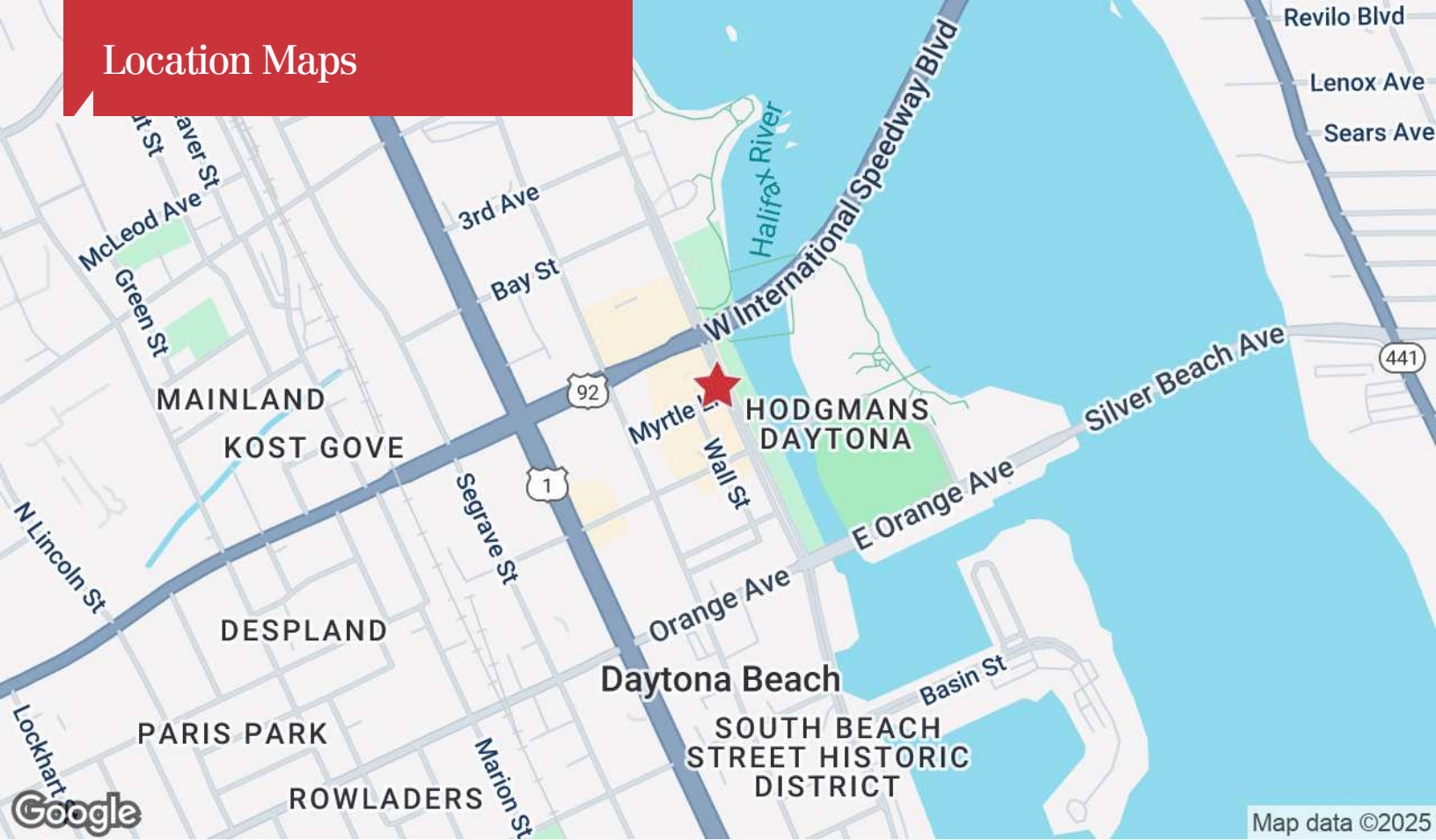


## Property Photos

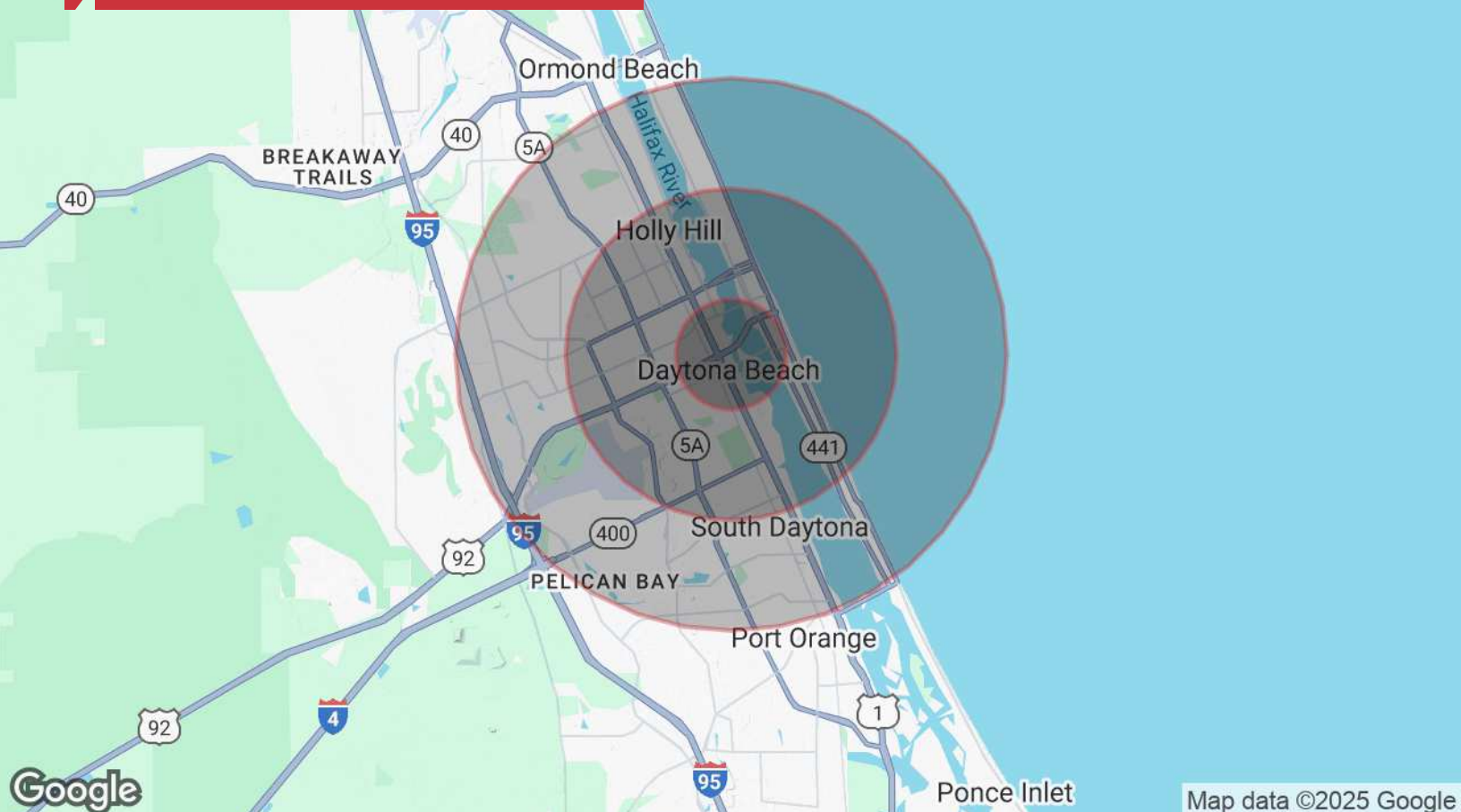




## Location Maps



# Demographics



Map data ©2025 Google

## Population

	1 Mile	3 Miles	5 Miles
TOTAL POPULATION	10,268	62,220	124,987
MEDIAN AGE	42	42	45
MEDIAN AGE (MALE)	42	42	44
MEDIAN AGE (FEMALE)	42	43	46

## Households & Income

	1 Mile	3 Miles	5 Miles
TOTAL HOUSEHOLDS	4,238	26,526	56,198
# OF PERSONS PER HH	2.4	2.3	2.2
AVERAGE HH INCOME	\$43,885	\$56,346	\$62,282
AVERAGE HOUSE VALUE	\$216,812	\$238,523	\$241,085

\* Demographic data derived from 2020 ACS - US Census