

AVAILABLE FOR LEASE

6870 First Park Blvd
Lakeland, FL



FOR LEASE

±200,242 SF

FIRST PARK BLVD



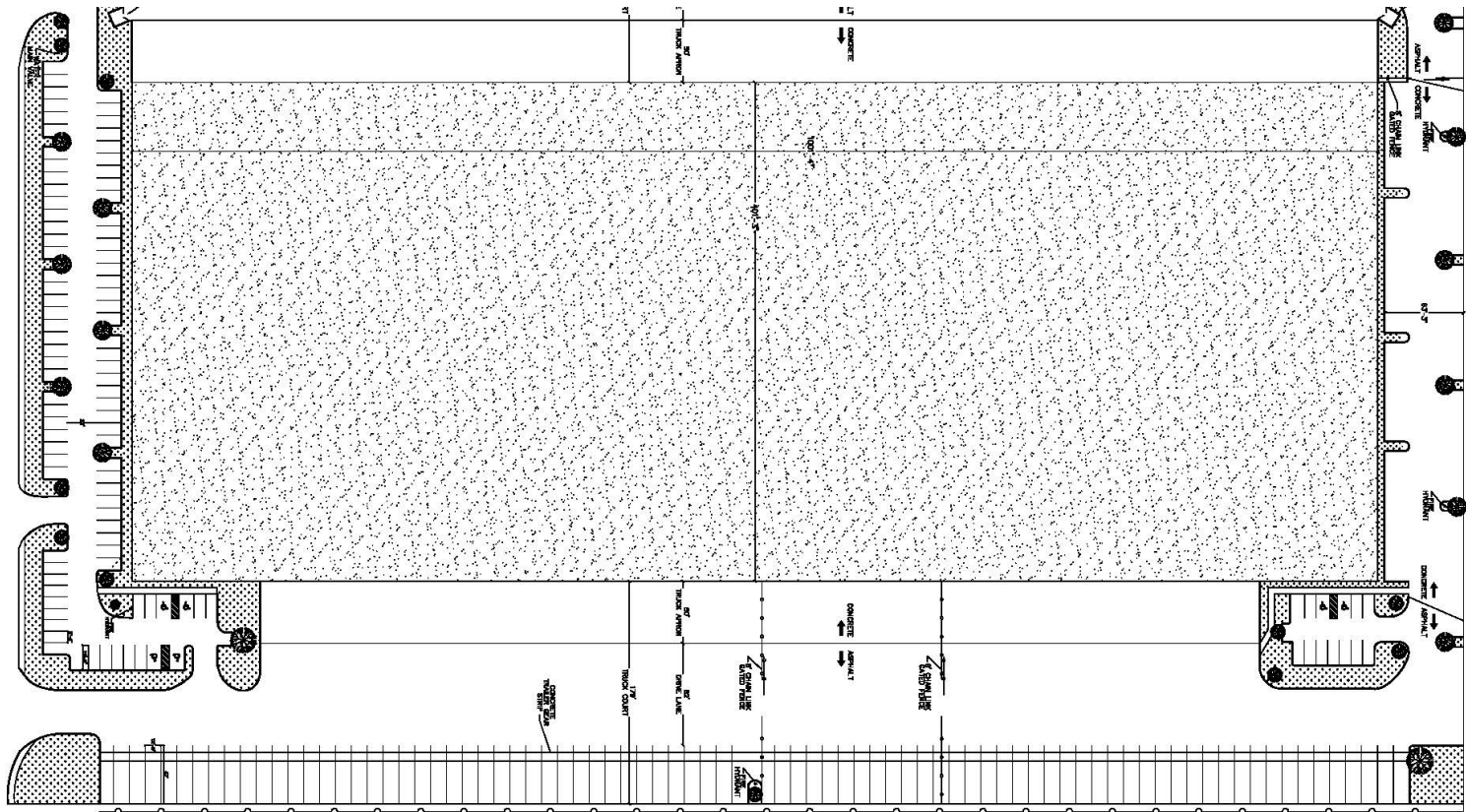
LEASED BY

FOUNDRY
COMMERCIAL

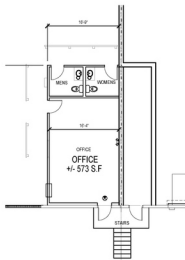


BUILDING SPECIFICATIONS

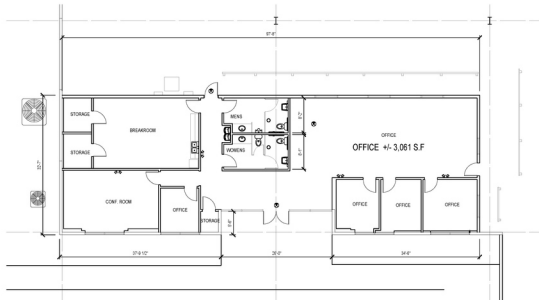
Total SF	200,242 SF
Warehouse SF	196,312 SF
Office SF	3,930 SF
Loading Dock	49 Dock High Doors
Opex	\$2.30/SF
Clear Height	30'
Ramp Doors	1 (12'x14')
Power	480/227V 600A 4 wire service



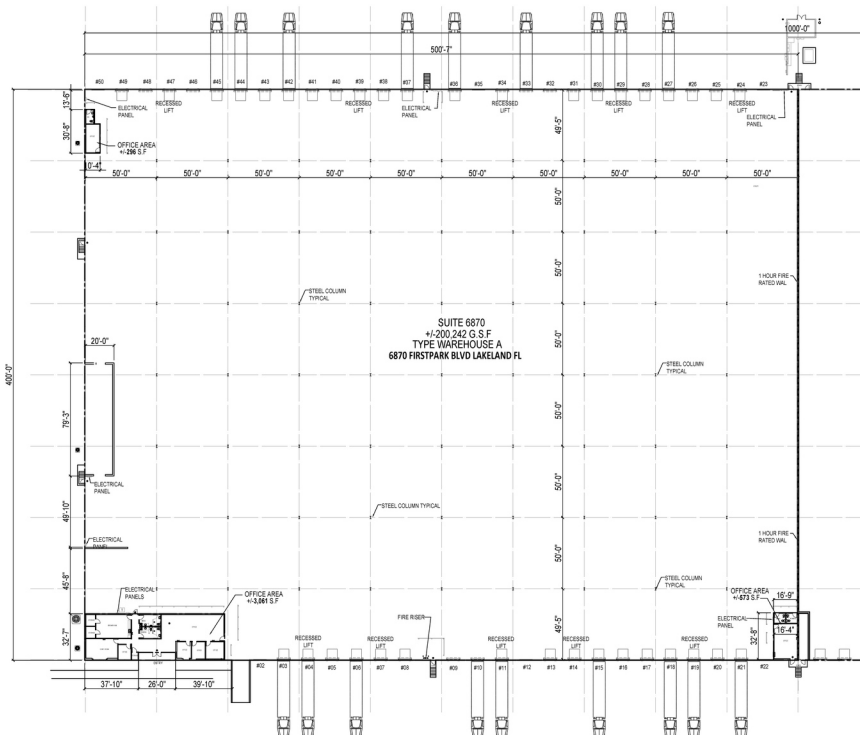
OFFICE PLAN
SCALE: 1/16" = 1'-0"



OFFICE PLAN
SCALE: 1/16" = 1'-0"



OFFICE PLAN
SCALE: 1/16" = 1'-0"



CONTACT INFORMATION

6870 First Park Blvd
Lakeland, FL

Justin Ruby, SIOR, CCIM

justin.ruby@foundrycommercial.com
(407) 865-0311

Joey Woodman

joey.woodman@foundrycommercial.com
(407) 748-5888

Caitlin Quinlan

caitlin.quinlan@foundrycommercial.com
(540) 550-2549

Jesse Drake

jesse.drake@foundrycommercial.com
(813) 449-2955

This is not an offer or acceptance of an offer to lease space. A lease will only be offered or made in a written agreement signed by landlord. No representation or warranty of any kind is made by landlord unless set forth in a written definitive lease executed by the landlord.

