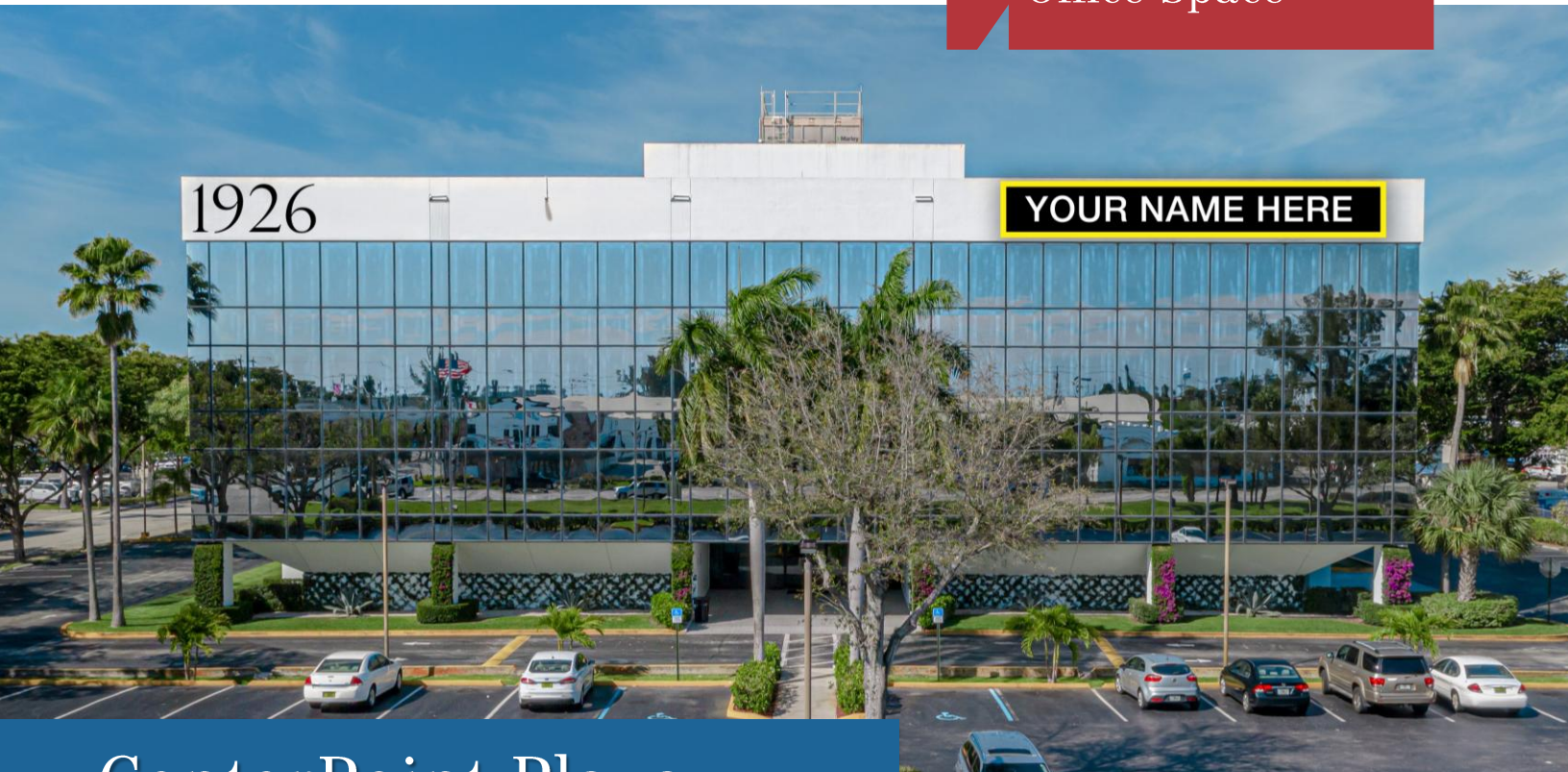


For Lease  
±7,314-12,017 SF  
Office Space



## CenterPoint Plaza

1926 10th Avenue North | Lake Worth, FL 33461

**HQ SPACE WITH SIGNAGE!**

### Property Features

- Prime Lake Worth office space for lease at 10<sup>th</sup> Avenue North, with immediate I-95 access
- Four-story professional office building with well-kept landscaping, abundant parking and professional on-site property management
- Exceptional value and visibility in a central Palm Beach County location
- Well-positioned near high-traffic retailers and residential neighborhoods

### Key Features:



**IMMEDIATE  
OCCUPANCY**



**Prime, central location,  
adjacent to I-95**



**15-minutes to Palm Beach  
International Airport**

### For More Information:

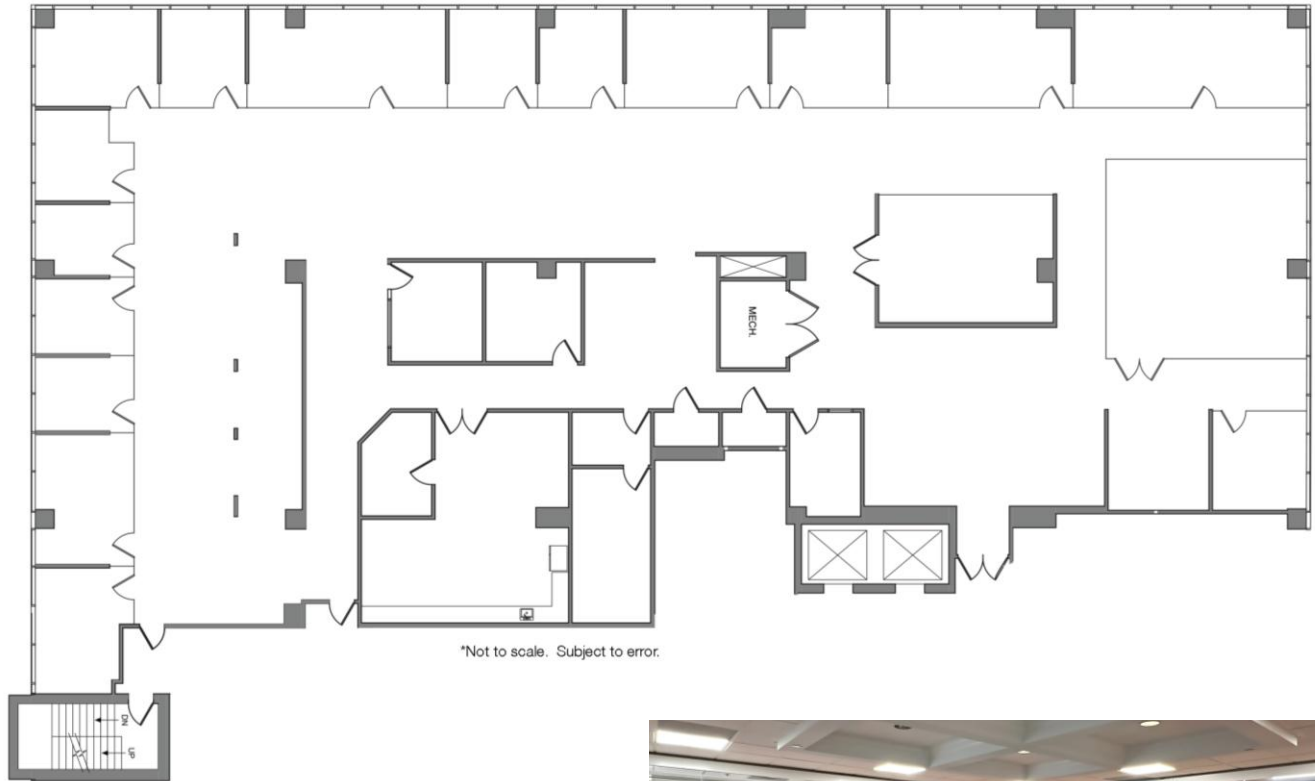
**Patrick Almand**, Associate  
443 370 8665 | palmand@mhcreal.com

**Jason Sundook**, SIOR  
Principal | jsundook@mhcreal.com



## FOR LEASE: CENTREPOINT PLAZA

# Best Corporate HQ Value | Ready When You Are



### Suite 300 ±12,017 SF

Beautifully finished and sprawling office space.

- Double-door entry off elevator lobby, near restrooms
- Glass-walled conference room and perimeter offices
- Flexible, open workspace
- Large breakroom with full kitchen
- High-end finishes including wood floors and glass accents
- Building signage available for qualified tenants



### For More Information:

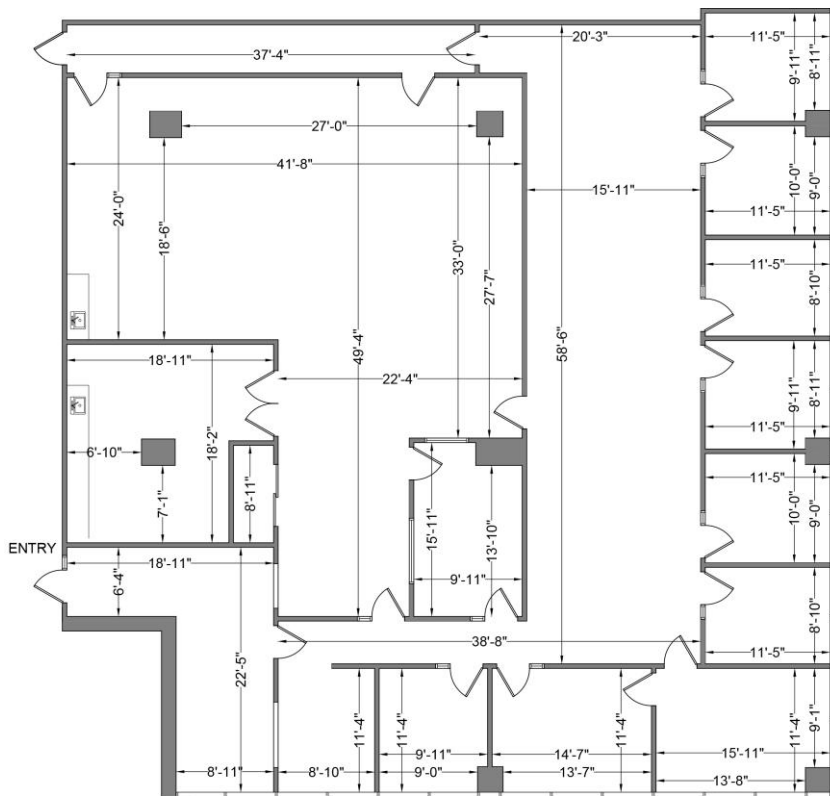
Jason Sundook, SIOR & Patrick Almand

561 471 8000 | [www.mhcreal.com](http://www.mhcreal.com)



**FOR LEASE: CENTREPOINT PLAZA**

## Modern, Move-In Ready Office Space Near I-95



### Suite 303 ±5,704 SF

- Floor-to-ceiling windows
- Reception area
- 9 private offices
- In-suite plumbing
- Open work area
- Conference room
- Kitchen/breakroom

**LET'S SCHEDULE YOUR TOUR TODAY!**

 **561 471 8000**

**Patrick Almand**, Associate  
443 370 8665 | palmand@mhcreal.com

**Jason Sundook**, SIOR  
Principal | jsundook@mhcreal.com