

# VACANT LAND FOR SALE

**20± Acres**

**5135 N. Cocoa Blvd.**

*US Hwy 1*

**Cocoa, FL 32927**

**SALE PRICE:  
\$500,000**

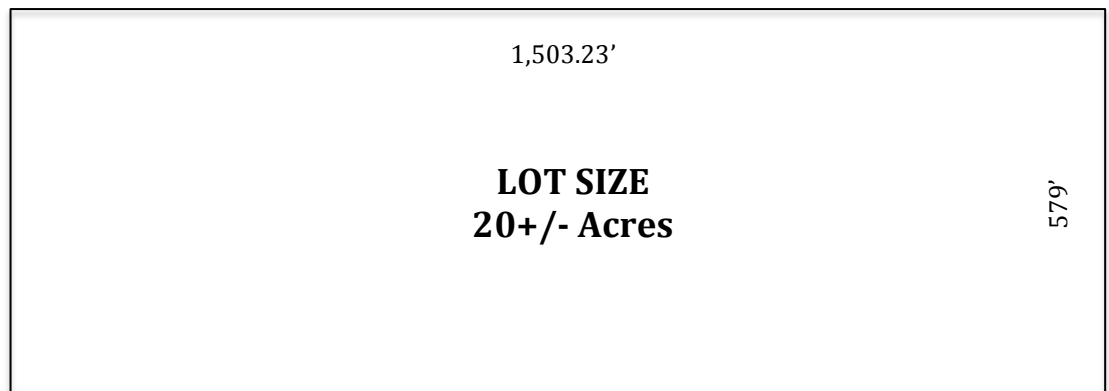
**ZONED: BU-2**  
Brevard County

**Parcel ID:** 23-36-30-00-00258.0-0000.00

**Tax ID:** 2317200

**Utilities:** City of Cocoa

**Directly on US Hwy 1 - North of SR 528**



**LIGHTLE BECKNER ROBISON**  
INCORPORATED  
COMMERCIAL REAL ESTATE SERVICES

[www.TeamLBR.com](http://www.TeamLBR.com)

© Lightle Beckner Robison, Inc.  
All Rights Reserved

**Rob Beckner, Principal**

**(321) 722-0707 x11**

**(877) 722-0707 x11**

**Rob@TeamLBR.com**

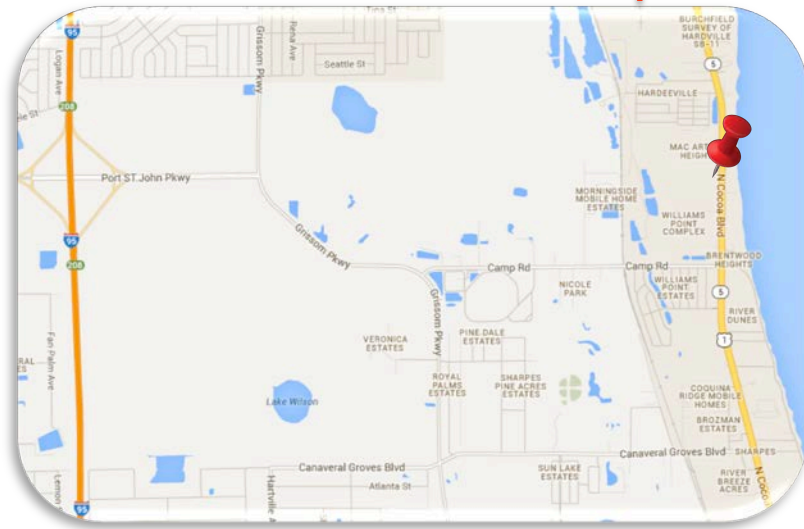
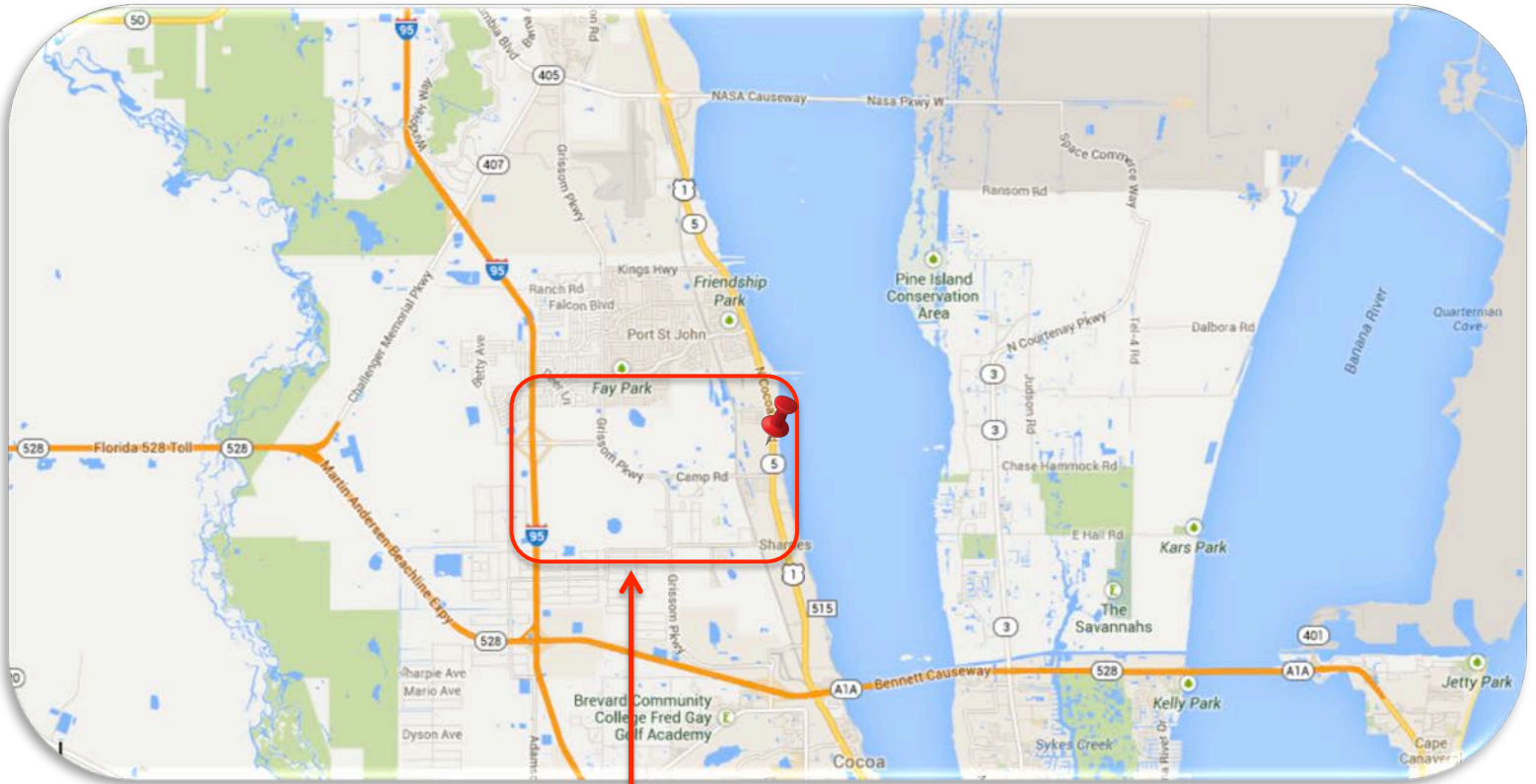
1398 South Babcock Street · Melbourne, Florida 32901 · (321) 722-0581 fax

*Information contained herein has been obtained from others and considered to be reliable; However, a purchaser or lessee is expected to verify all information to his/her own satisfaction.*

**5135 N. Cocoa Blvd.**

*US Hwy 1*

**Cocoa, FL 32927**



**DISTANCES TO KEY POINTS:**

- 3.8 miles north of SR 528 (Beachline)
- 4.4 miles to I-95
- 6.5 miles to SR 405 (NASA Cswy.)
- 11.7 miles to Port Canaveral



**LIGHTLE BECKNER ROBISON**

INCORPORATED

COMMERCIAL REAL ESTATE SERVICES

**Rob Beckner, Principal**

**(321) 722-0707 x11**

**(877) 722-0707 x11**

**Rob@TeamLBR.com**

[www.TeamLBR.com](http://www.TeamLBR.com)

© Lightle Beckner Robison, Inc.  
All Rights Reserved

1398 South Babcock Street · Melbourne, Florida 32901 · (321) 722-0581 fax

*Information contained herein has been obtained from others and considered to be reliable; However, a purchaser or lessee is expected to verify all information to his/her own satisfaction.*