

FOR LEASE



FACILITY OVERVIEW:

**±9,540 SF Warehouse &
Office Facility on 1.49
Acres**



**3300 LILLIAN BLVD
TITUSVILLE, FLORIDA**

FOR INFO CONTACT:

MICHAEL MOSS II
Associate
321.266.1150
mmoss@teamlbr.com

MIKE MOSS, SIOR
Principal | Director
321.543.2498
Mike@teamlbr.com

LUKE BROWN
Associate
603.244.8052
Luke@teamlbr.com



LIGHTLE BECKNER ROBISON
• INCORPORATED •
COMMERCIAL REAL ESTATE SERVICES

70 W HIBISCUS BLVD MELBOURNE, FL | PHONE: 321-722-0707 | WWW.TEAMLBR.COM
INFORMATION CONTAINED HEREIN BELIEVED ACCURATE HOWEVER NOT WARRANTED

3300 Lillian Titusville, Florida

±9,540 SF

Available For Lease

PROPERTY OVERVIEW

Building 1 SF 9,540

Office SF..... 2,000

Clear Height +/-16'

Total Acreage 1.49

Power Three Phase

Zoning M-3

Loading Grade Level Doors

Lease Rate \$12.25/sf/yr NNN

CALL FOR MORE INFO

OFFERING SUMMARY

The team at Lightle Beckner Robison, Inc. is now offering this versatile property in the heart of Titusville just minutes from Interstate 95 and NASA Causeway. The property has undergone renovations featuring LED lighting, new lay down yard, ample office space, and more. This is a great spot for contractors, light assembly, and warehouse storage.

Contact our team to learn more about this opportunity!

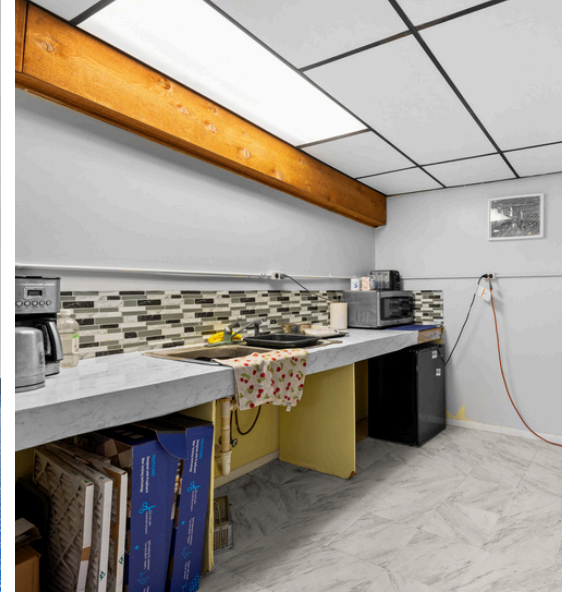
PROPERTY FEATURES:

- Mezzanine Office Space & Epoxy floored reception area
- Fenced Outside Storage
- Near Interstate 95 & 3 Miles from SR 528
- Ample Power

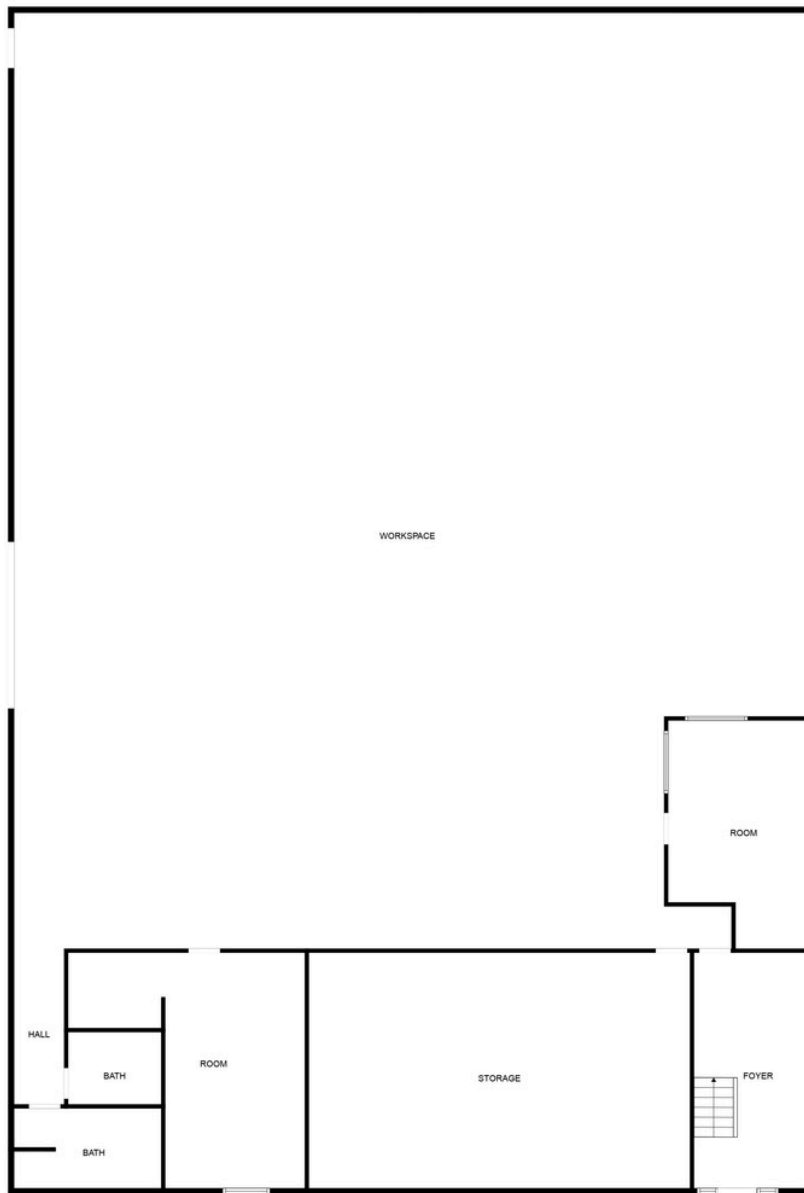
LOCATION INSIGHT



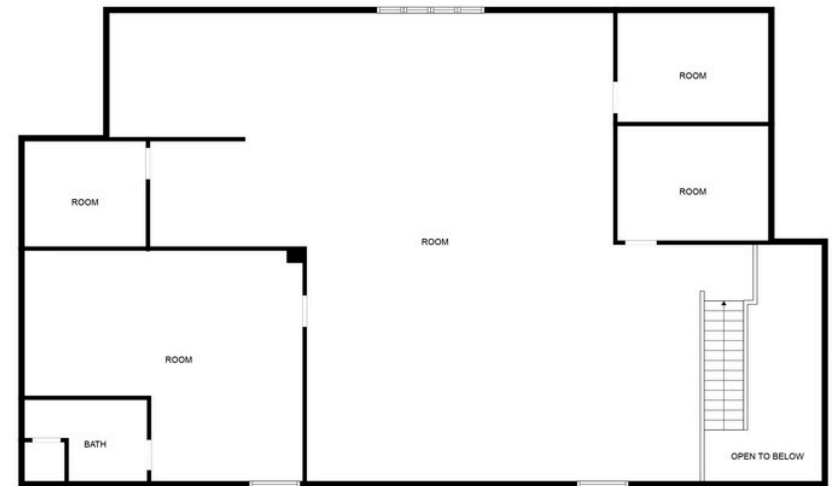
PROPERTY PHOTOS



FLOOR PLAN



FLOOR 1



FLOOR 2

CALL FOR INFO

MICHAEL MOSS II
Associate
321.266.1150
mmoss@teamlbr.com

MIKE MOSS, SIOR
Principal | Director
321.543.2498
Mike@teamlbr.com

LUKE BROWN
Associate
603.244.8052
Luke@teamlbr.com