



## LISTING DATA

**Available SF:** Suite 3626 | 2,400 SF

**Office SF:** 847 SF

**Building Size:** 39,600 SF

**Clear Height:** 10'

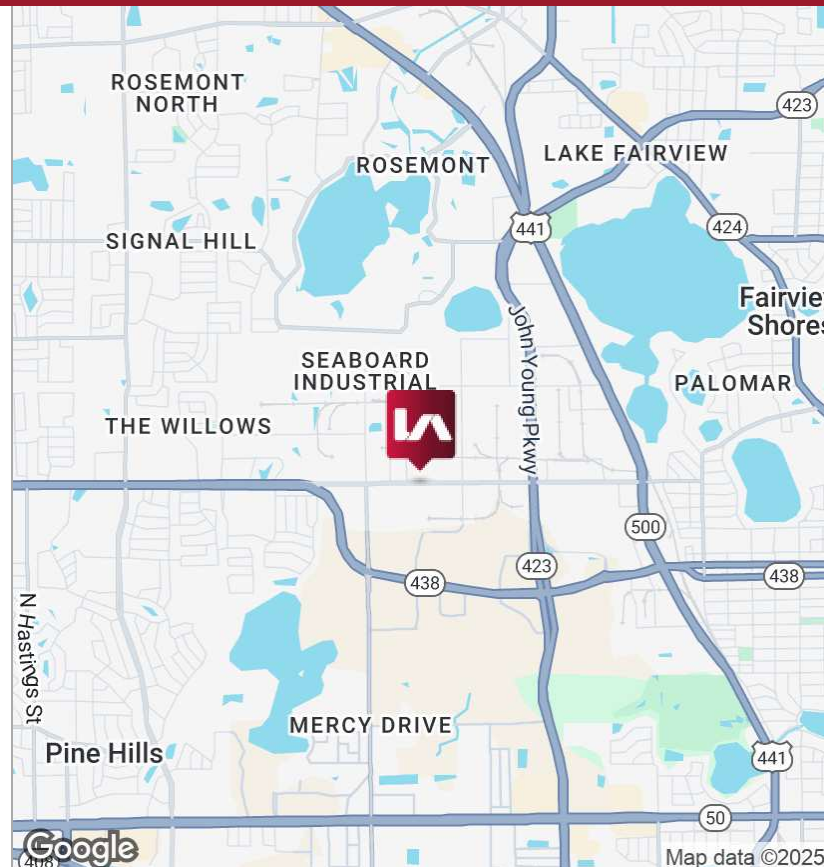
**Zoned:** I-P/W, City of Orlando

**Loading:** Rear

**Comments:** 39,600 SF Class B rear-load industrial building zoned I-P/W, City of Orlando

## ECONOMIC DATA

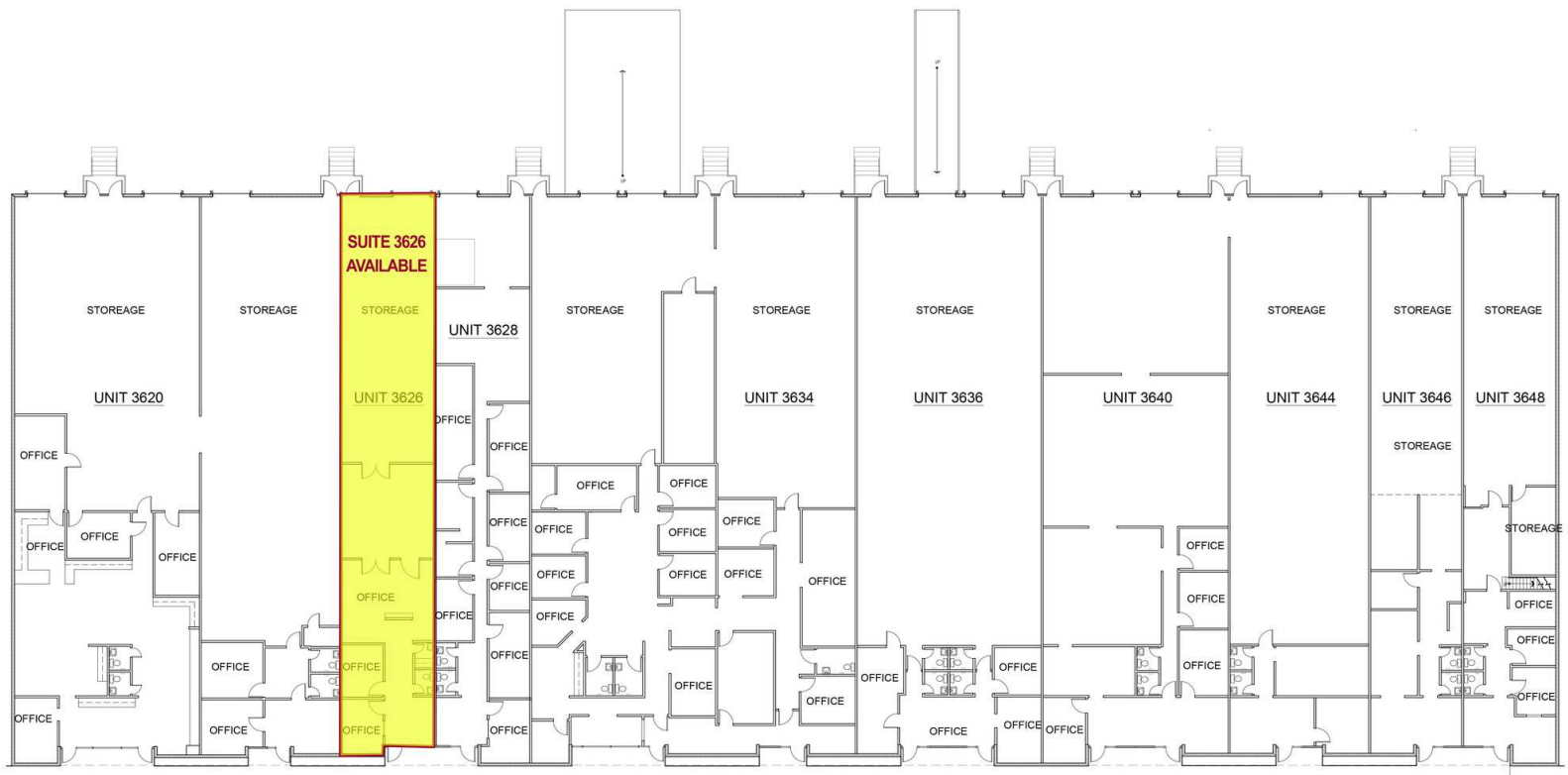
**Lease Rate:** CALL FOR INFO



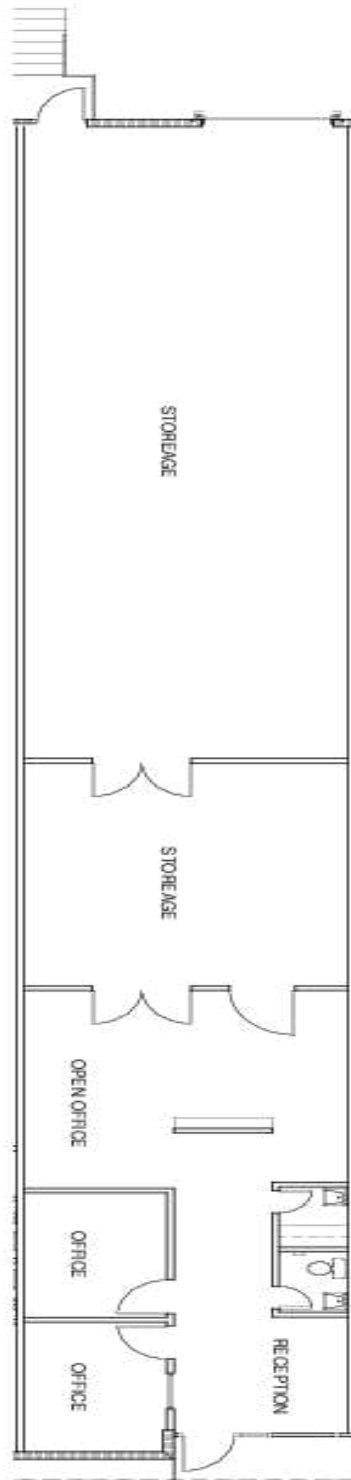


## AVAILABLE SPACES

SUITE	SIZE (SF)	LEASE TYPE	LEASE RATE	DESCRIPTION
Suite 3626	2,400 SF	NNN	Call For Info	847 SF Office with 1 dock door







Suite 3626 | 2,400 SF