

For Sale

Commercial Parcel

1.99 Acres | \$477,387 / Acre



Ralph Miller Road

Saint Cloud, Florida 34771

Property Highlights

- 1.99± acre commercial parcel
- HB (Highway Business) zoning in the City of St. Cloud
- 215 feet of frontage on Ralph Miller Road
- Located 6 miles south of Lake Nona
- Multiple new residential subdivisions in close proximity
- 5 minutes to Orlando Health St. Cloud Hospital
- Easy access to US Hwy 192-441, Florida's Turnpike, SR 417 (GreeneWay)
- Conditional Use Approval for daycare
- Great location for office, medical as well as pet boarding
- City water and sewer available



Sale Price: \$950,000

For more information

Kevin O'Connor

O: 407 949 0736

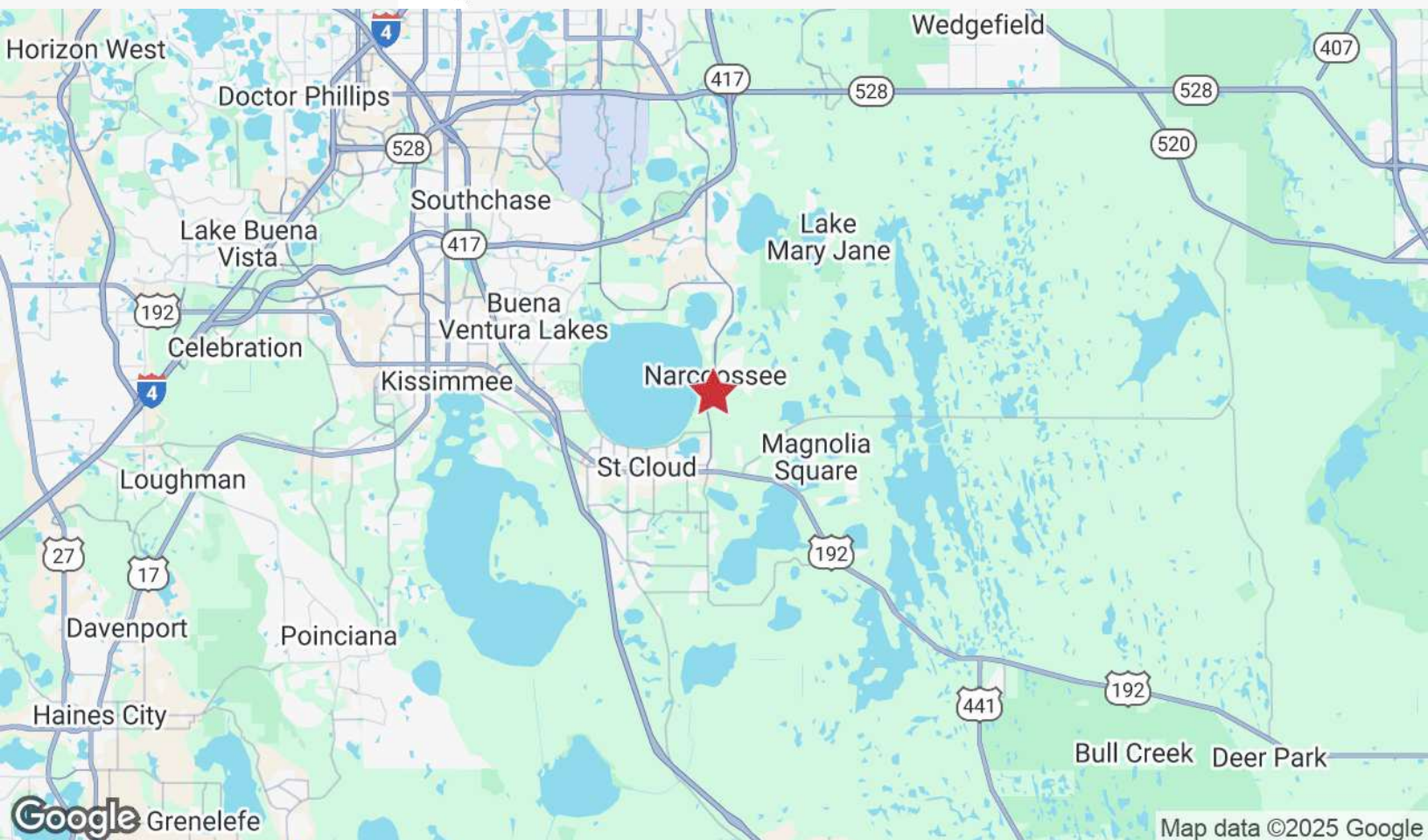
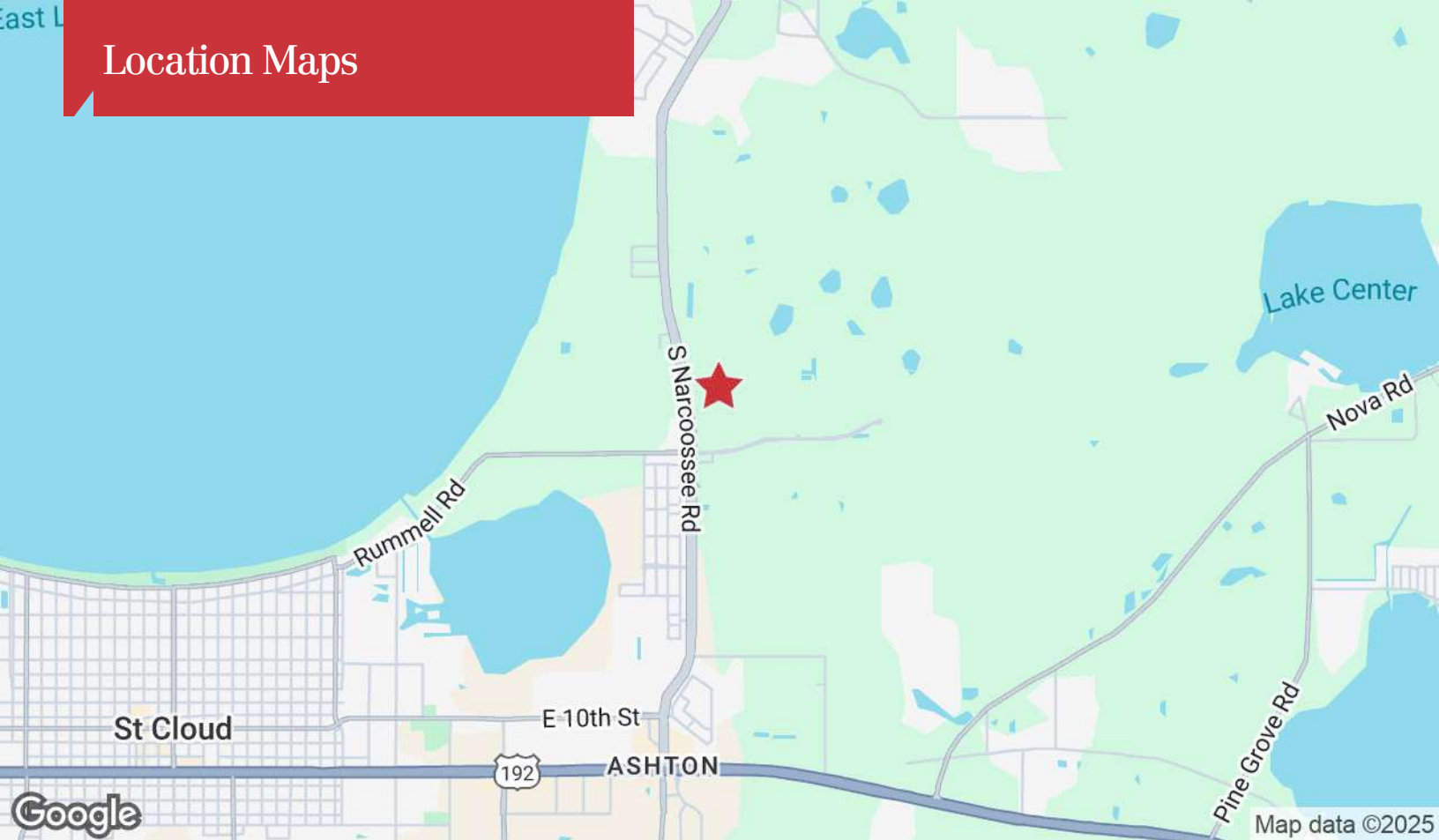
koconnor@realvest.com

Matthew Cichocki

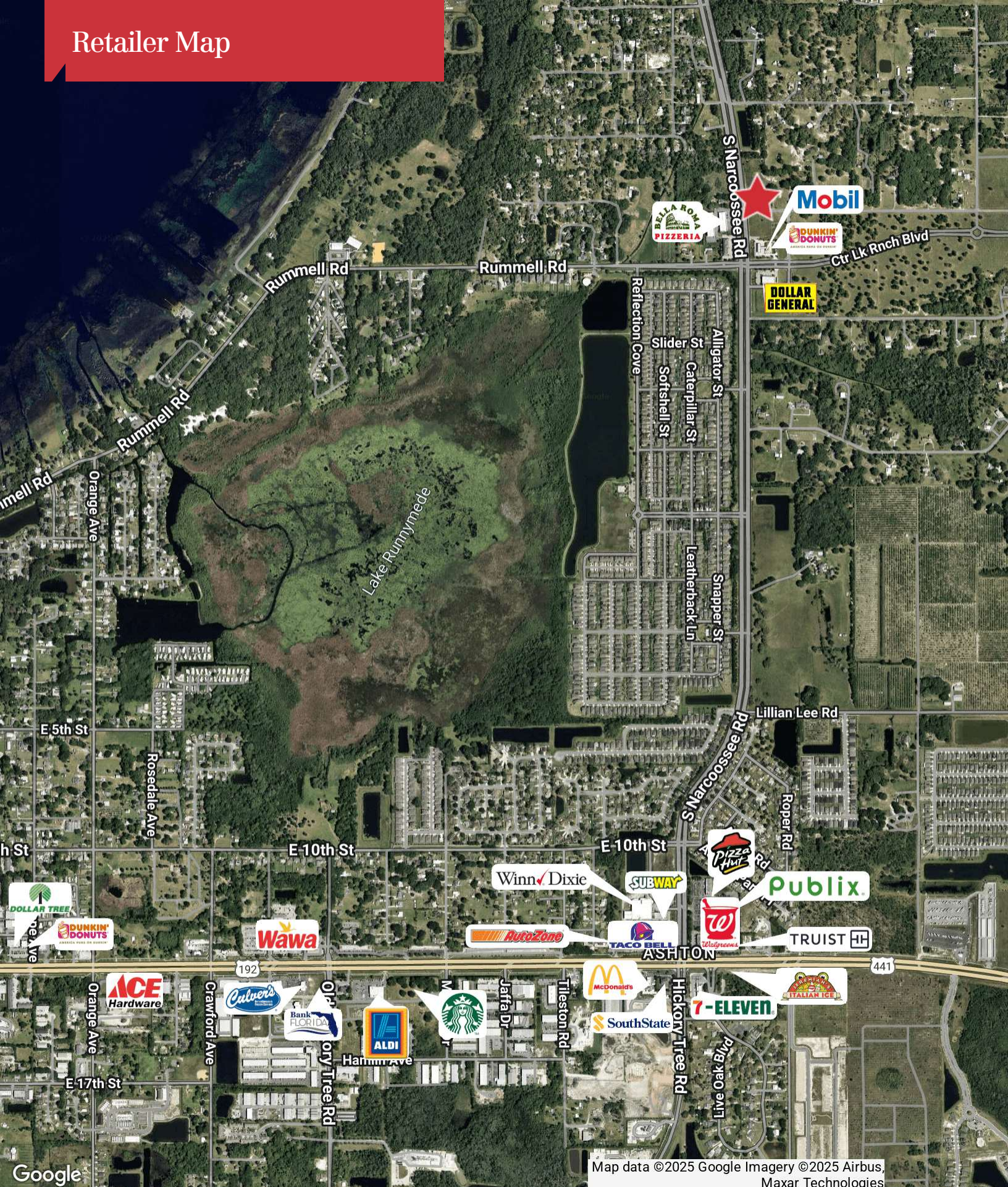
O: 407 949 0738

mcichocki@realvest.com

Location Maps

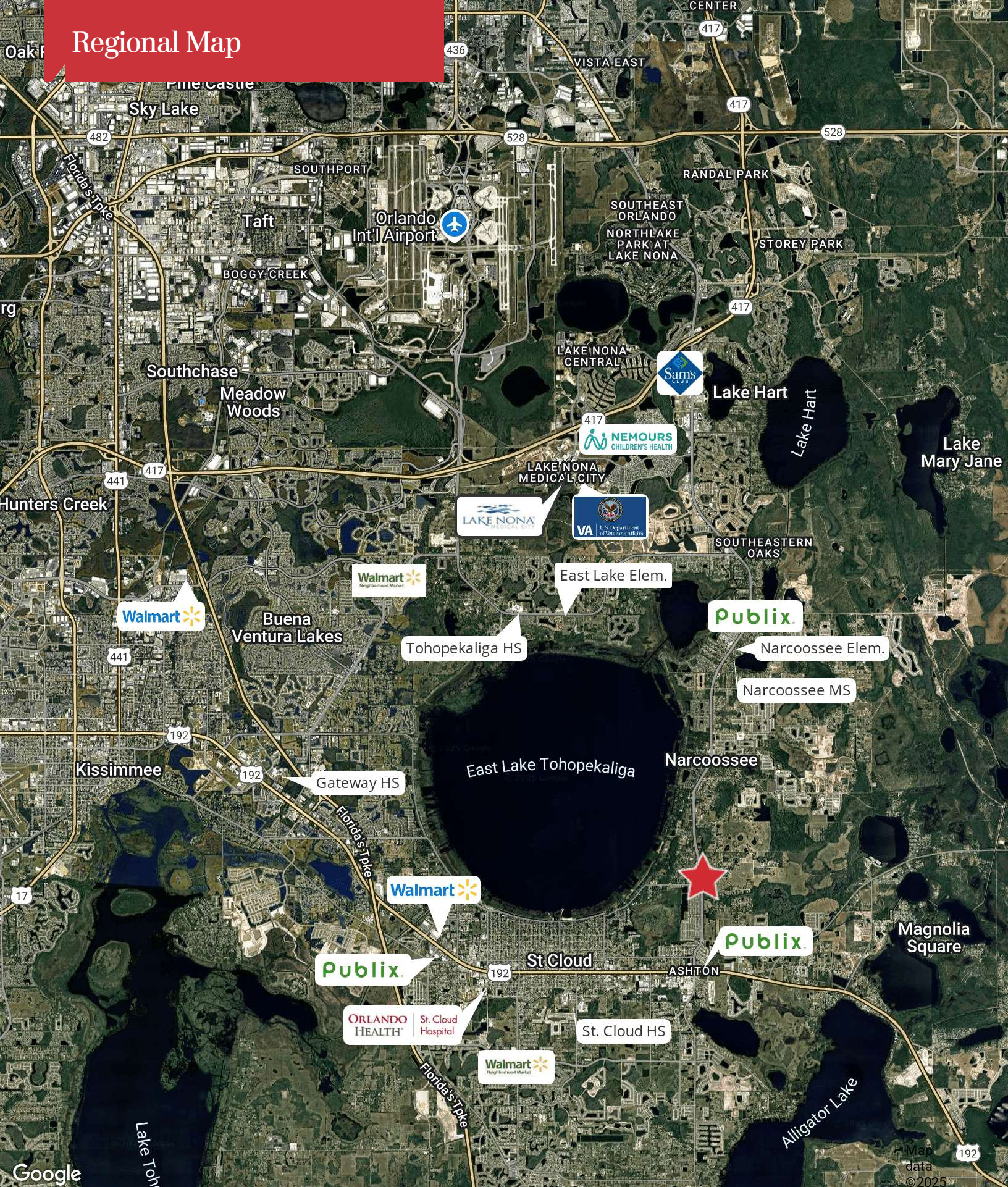


Retailer Map



Map data ©2025 Google Imagery ©2025 Airbus, Maxar Technologies

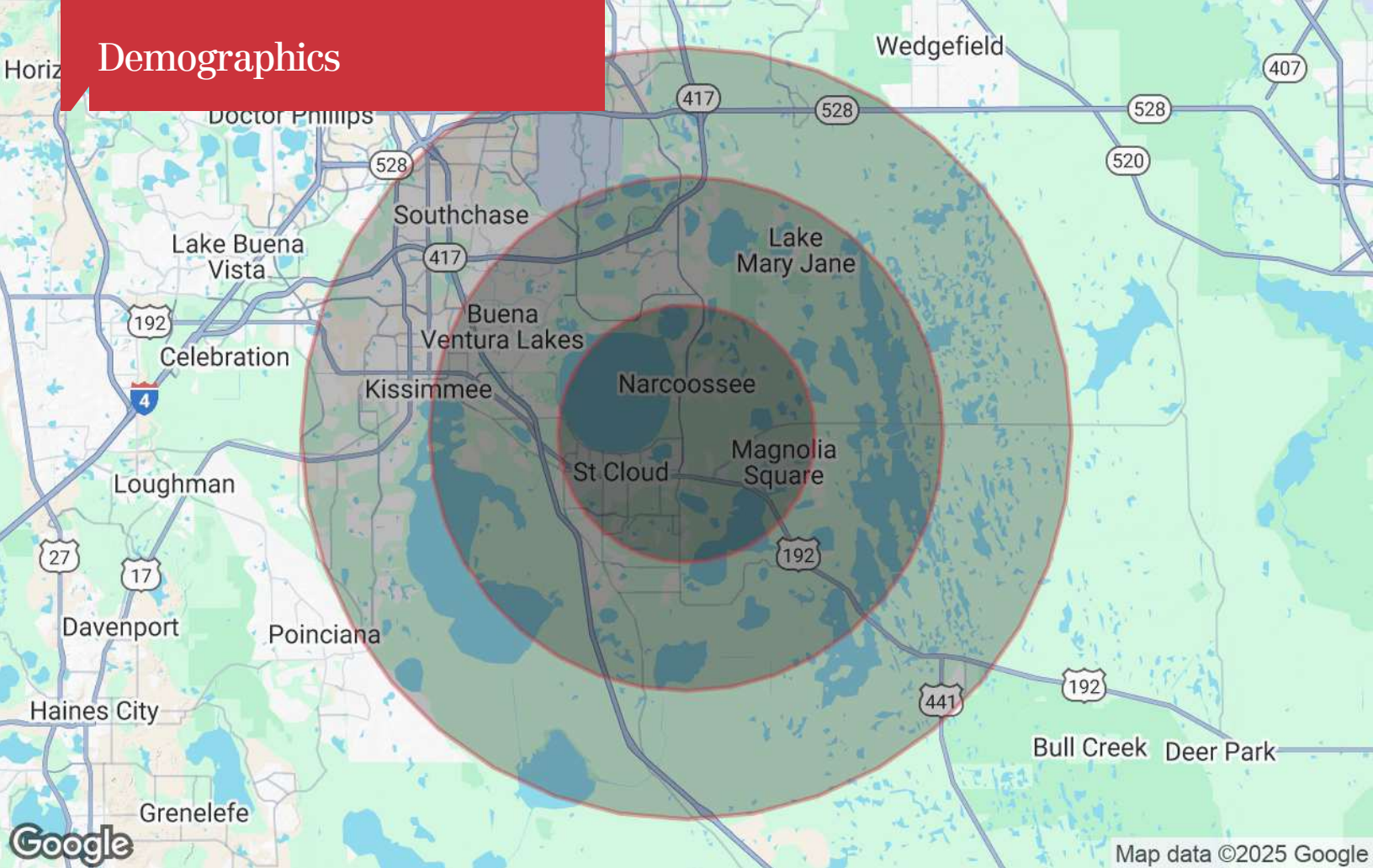
Regional Map



Surrounding Development



Demographics



Population

	5 Miles	10 Miles	15 Miles
TOTAL POPULATION	71,765	321,268	554,056
MEDIAN AGE	41	39	39
MEDIAN AGE (MALE)	39	38	38
MEDIAN AGE (FEMALE)	41	40	40

Households & Income

	5 Miles	10 Miles	15 Miles
TOTAL HOUSEHOLDS	25,320	105,507	184,064
# OF PERSONS PER HH	2.8	3	3
AVERAGE HH INCOME	\$105,758	\$102,883	\$98,052
AVERAGE HOUSE VALUE	\$394,433	\$394,963	\$384,677

* Demographic data derived from 2020 ACS - US Census