

COMMERCIAL LAND FOR LEASE

ST.Cloud, Highway 192 Frontage



Property Highlights

- Osceola County
- Part of the fast growing City of Saint Cloud
- Centrally located between NeoCity, Saint Cloud and Lake Nona
- Ground Lease or Build-to-suit
- Between major retail clusters and highways
- Access to utilities next to property
- Exclusive highway ingress lane
- ZONED OAC
- Parcel ID 04-26-30-0000-0019-0000

2.78 Acres

St. Cloud, FL

Call for Pricing

DEMOGRAPHICS

2025 Summary

Radius	Population	Average HH Income
1 mile	5,879	\$ 83,701
3 miles	60,422	\$ 93,633
5 miles	116,780	\$ 95,942

COMMERCIAL LAND FOR LEASE

ST.Cloud, Highway 192 Frontage



civil engineers
environmental engineers
landscape architects
& land planners

1003 Florida Avenue
City of Saint Cloud
Florida 34769
Telephone: (407) 891-0452
Facsimile: (407) 891-9173

Consuegra
Commercial

Conceptual
Site Master
Plan

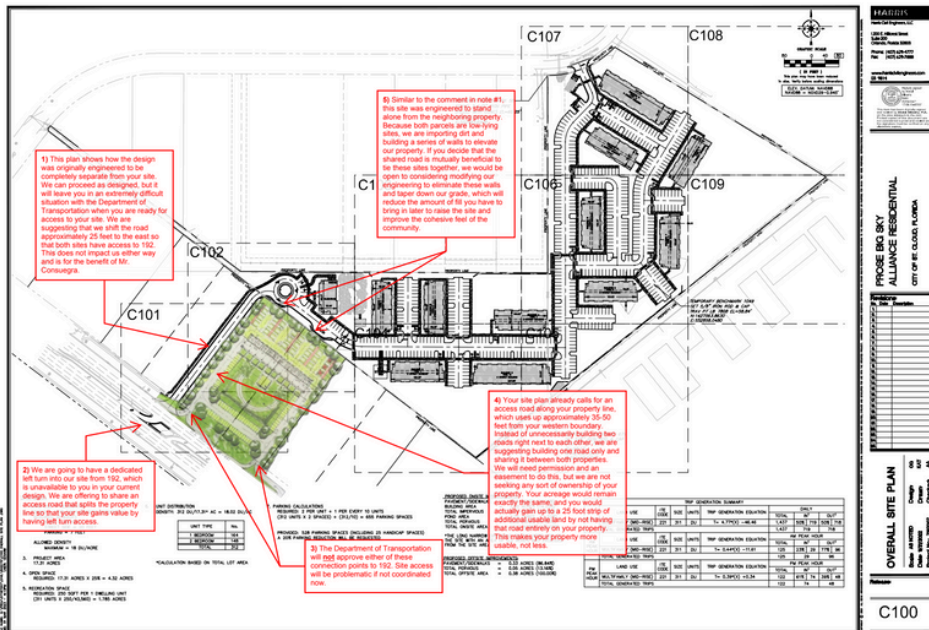
04-26-30-0000-0019-0000
E. Irlo Bronson Mem Hwy
St Cloud, Florida 34769



Scale: 1" = 60'
Date: April 22, 2025

FIGURE 1

Prepared using Osceola County GIS / Aerial data / Approved SDP PDF



2.78 Acres
Call for Pricing

AADT
US 192 40,500

MANNY BERRIOS
C 407-615-0515
manny@capstrata.com

CapStrata.com

CapStrata
COMMERCIAL