

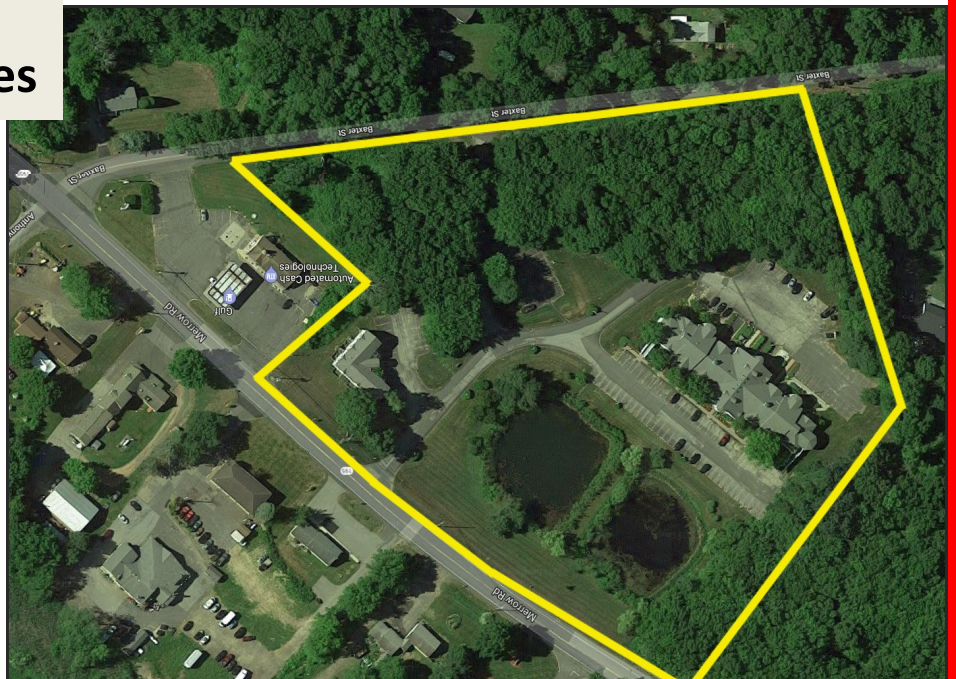
384 MERROW RD., TOLLAND, CT

2 Office Spaces For Lease at Twin Pond Centre



**1,675 SF & 1,716 SF
@ \$23/SF Gross + Utilities**

- ⇒ On Route 195
- ⇒ 1st Floor spaces
- ⇒ Year Built: 2003
- ⇒ Zone: NCZ
- ⇒ Close to I-84 at Exit 68
- ⇒ Gas heat /Central AC
- ⇒ On Route to Storrs / UCONN Campus.
- ⇒ Tenant Responsible for Interior Maintenance.



LYMAN

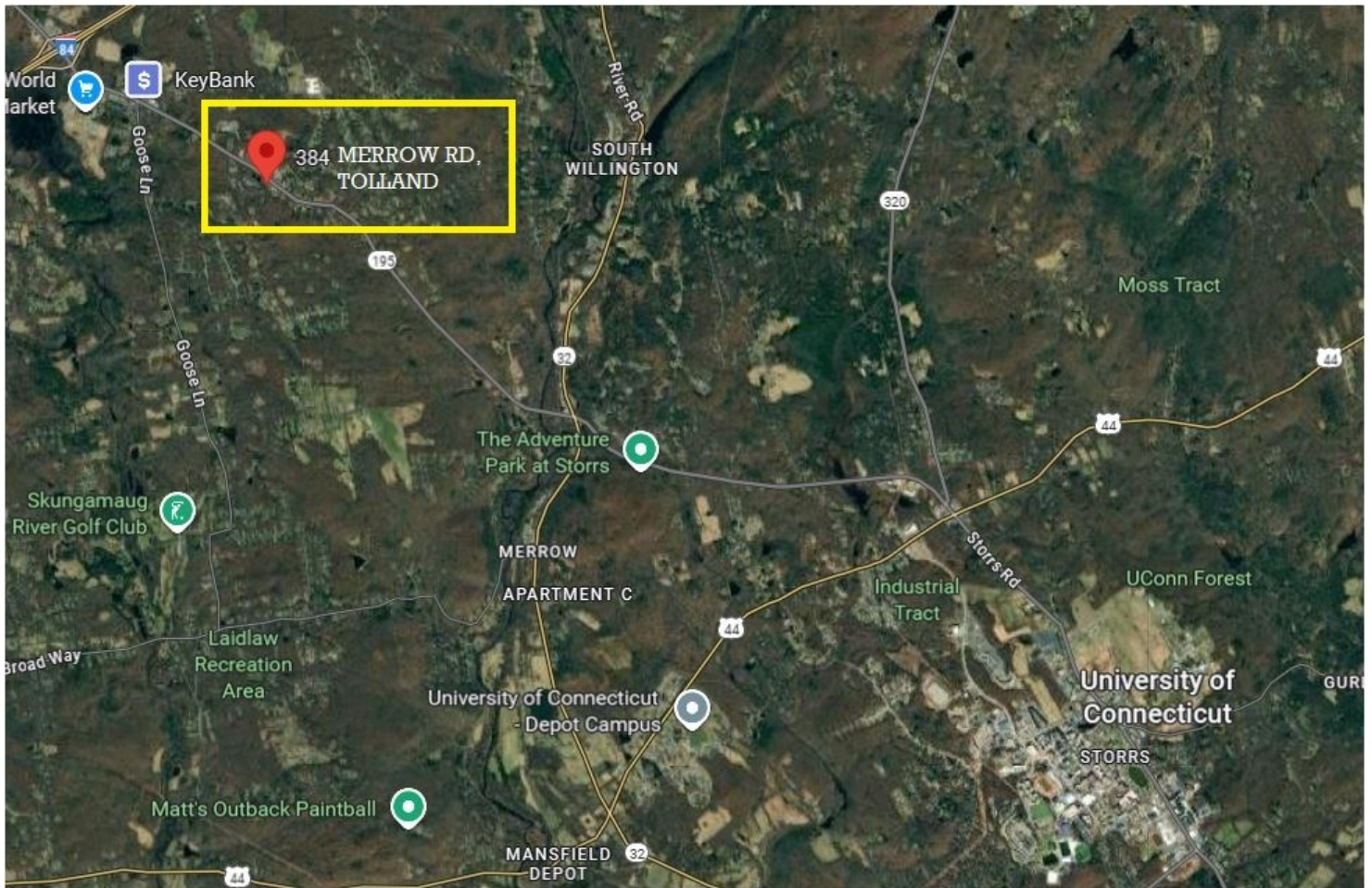
REAL ESTATE BROKERAGE & DEVELOPMENT
www.LymanRE.com

RON LYMAN

Lyman Real Estate
860-884-4666 Cell
860-887-5000 Office
ronl@lymanre.com

Max Lyman
860-876-7766
maxl@lymanre.com

AREA MAP & DEMOGRAPHICS



Demographics	1 MILE	3 MILES	5 MILES
Total Population	4,408	28,878	147,045
Total Households	1,677	10,734	55,699
Average Household Income	\$128,189	\$114,564	\$109,357

All information stated is from sources deemed reliable and is submitted subject to errors, omission, changes of other terms and conditions, prior sales, financing or withdrawal without notice. Buyer/Tenant agents will be eligible for a portion of commission only if they have an existing signed representation.