

Shops at Palm Bay

St. Johns Heritage Pkwy & Emerson Drive, Palm Bay, FL

NAI Southcoast



Presented by:

J. Jeffery Allman, Jr.

Principal | Broker Associate
+1 772 286-6292 c +1 772 283 1555
jeff@naisouthcoast.com
www.naisouthcoast.com

Nikolaus M. Schroth, CCIM

Principal | Broker Associate
+1 772 286 6292
nikschroth@naisouthcoast.com
www.naisouthcoast.com

James McKinney

Sales Associate
+1 772 349 3414
jamesmckinney@naisouthcoast.com
www.naisouthcoast.com

Stephen Goodfellow

Sales Associate
+1 561 510 3911
stephen@naisouthcoast.com
www.naisouthcoast.com

A DEVELOPMENT BY:



RETAIL
FOR LEASE

OUTPARCELS
FOR SALE/GROUND LEASE

Call for Pricing Guidance

Shops at Palm Bay

St. Johns Heritage Pkwy & Emerson Drive, Palm Bay, FL

Property Details

- Address: St. Johns Heritage Parkway & Emerson Drive
- Pricing: Call for Pricing Guidance
- Space Size: 1,300 SF to +/- 9,014 SF
0.86 Acre & 1.01 Acre Outparcels
(Ground Lease or Purchase)
- Frontage: +/- 300' on St. Johns Heritage Pkwy
+/- 500' on Emerson Drive
- Estimated Delivery: Q4 2026
- Access: St. Johns Heritage Pkwy & Emerson Dr
- AADT: 9,400 Emerson / 8,700 St Johns Heritage

Property Overview

- Located in Brevard County's largest city, Palm Bay, which is experiencing massive amounts of residential growth with over 14,000 new homes approved or under construction within 3-miles of this location.
- Nearby the major intersection of the St. Johns Heritage Parkway and Emerson Drive, which is the commercial component to Lennar's 4,000 home community, Everlands, which surrounds these parcels.
- The traffic signal here is fully funded and approved and is scheduled to be installed later this year.
- Directly north is the Platt Ranch that has approvals for 4,672 homes, approximately 500,000 SF of commercial and multiple schools with a 1,700 student capacity.
- The 4-laning of St. Johns Heritage Pkwy from Hwy 192 to Malabar Rd is scheduled to begin also later this year and the 4-laning of Emerson Drive has already commenced to the east of this site and shall continue to St. Johns Pkwy.
- The St. Johns Heritage Pkwy was constructed for residents living in this area of southwest Brevard County to easily access the surrounding areas and is the primary route for local residents heading to work which is primarily to the north.
- The St. Johns Heritage Pkwy is to be extended south from Malabar Rd ultimately connecting back into Interstate 95.
- Just over two miles to the south there is a new Publix anchored shopping center going in at the northwest corner of St. Johns Heritage Pkwy & Malabar Rd.
- With minimal commercial opportunities on the St. Johns Heritage Pkwy makes this the premiere commercial opportunity
- There are approximately 2,500 students in this area with 1,700 additional planned.



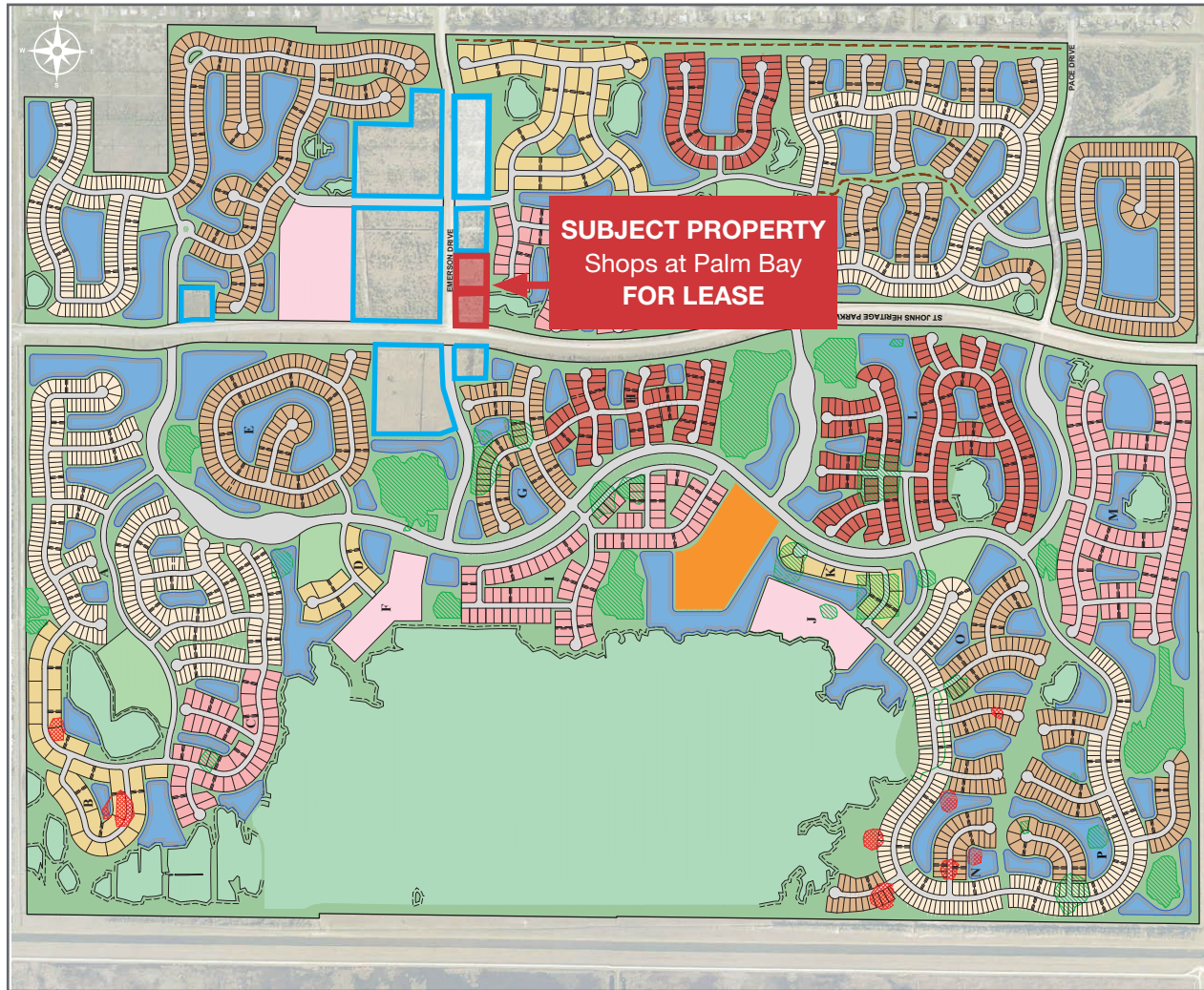
Demographic Highlights

	Average Household Income	Median Age
1 Mile	\$70,413	40.1
3 Miles	\$84,559	40.3
5 Miles	\$89,583	41.7

Shops at Palm Bay

St. Johns Heritage Pkwy & Emerson Drive, Palm Bay, FL

Master Development Site Plan



PALM VISTA - WEST		
NW - (NON-AGE RESTRICTED)		
POD	PRODUCT	UNITS
A	SINGLE FAMILY - 40's	364
B	TOWNHOME - 4-unit & 6-unit	168
C	TWIN VILLAS	102
NW - UNIT TOTAL		634
SW - ACTIVE ADULT (AGE RESTRICTED)		
D	TOWNHOME - 4-unit & 6-unit	46
E	SINGLE FAMILY - 50's	149
F	MULTI-FAMILY CONDO	140
G	SINGLE FAMILY - 50's	82
H	SINGLE FAMILY - 60's	72
I	TWIN VILLAS	186
J	MULTI-FAMILY CONDO	140
K	TOWNHOME - 4-unit & 6-unit	52
L	SINGLE FAMILY - 60's	179
M	TWIN VILLAS	240
N	SINGLE FAMILY - 40's	90
	SINGLE FAMILY - 50's	43
	SINGLE FAMILY - 40's	69
O	SINGLE FAMILY - 50's	77
P	SINGLE FAMILY - 40's	120
	SINGLE FAMILY - 50's	94
SW - UNIT TOTAL		1779
WEST - UNIT TOTAL		2413

PALM VISTA - NORTHEAST	
NE - (NON-AGE RESTRICTED)	
PRODUCT	UNITS
SINGLE FAMILY - 40's	156
SINGLE FAMILY - 50's	242
MULTI-FAMILY	187
NE - UNIT TOTAL	585

PALM VISTA - EAST MEDLEY AT EVERLANDS	
ACTIVE ADULT (AGE RESTRICTED)	
PRODUCT	UNITS
TWIN VILLAS	150
TOWNHOME - 4-unit & 6-unit	234
SINGLE FAMILY - 40's	228
SINGLE FAMILY - 50's	166
SINGLE FAMILY - 60's	62
E - UNIT TOTAL	840

PALM VISTA - SOUTHEAST EVERLANDS	
PRODUCT	UNITS
SINGLE FAMILY - 50's	162
SE - UNIT TOTAL	162

LEGEND	
	TWIN VILLAS
	TOWNHOME - 4-unit & 6-unit
	MULTI-FAMILY
	SINGLE FAMILY - 40's
	SINGLE FAMILY - 50's
	SINGLE FAMILY - 60's
	AMENITY CENTER
	TOWN CENTER

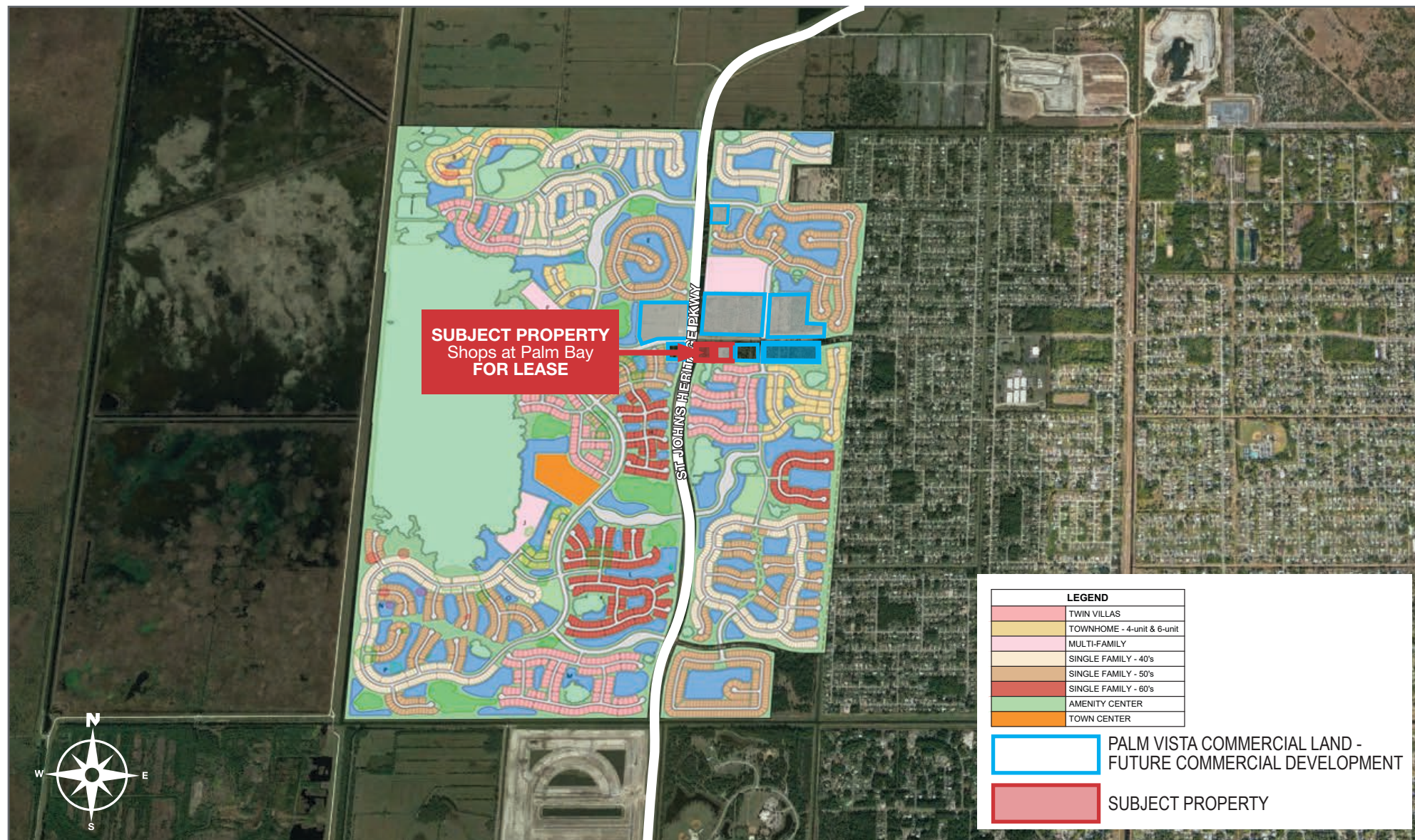
PALM VISTA - OVERALL UNIT COUNT SUMMARY	
	UNITS
WEST	2413
NORTHEAST	585
EAST	840
EVERLANDS (SOUTHEAST)	162
UNIT TOTAL	4000

	PALM VISTA COMMERCIAL LAND - FUTURE COMMERCIAL DEVELOPMENT
	SUBJECT PROPERTY

Shops at Palm Bay

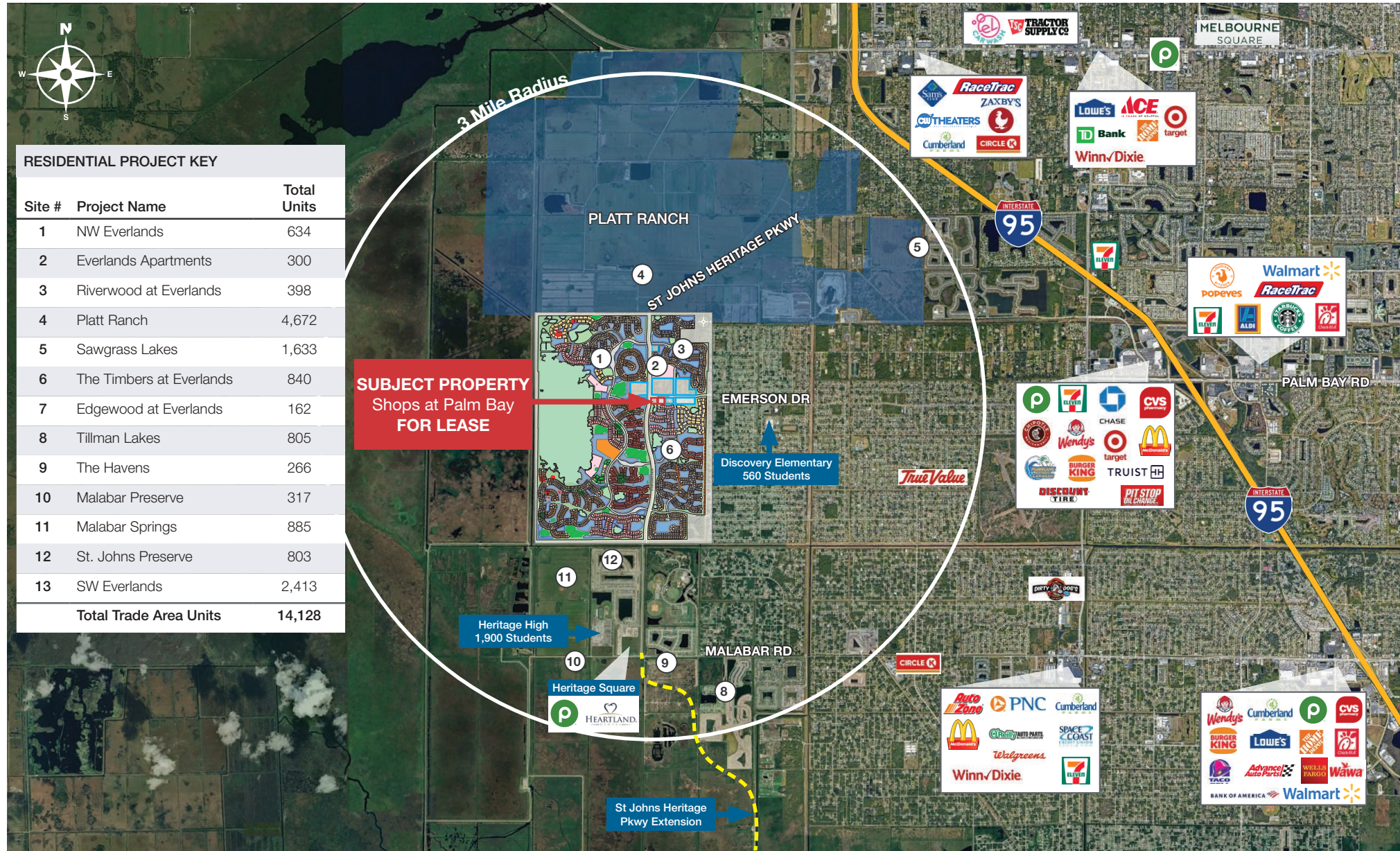
St. Johns Heritage Pkwy & Emerson Drive, Palm Bay, FL

Master Development Site Plan



Shops at Palm Bay

St. Johns Heritage Pkwy & Emerson Drive, Palm Bay, FL



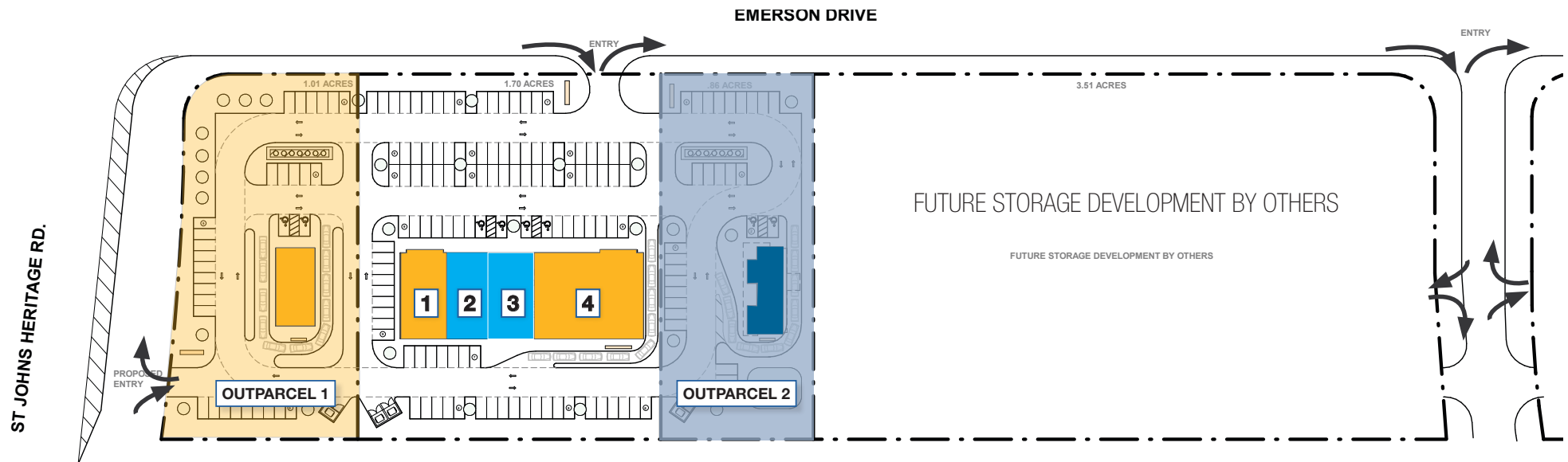
Shops at Palm Bay

St. Johns Heritage Pkwy & Emerson Drive, Palm Bay, FL

Concept Site Plan

	Unit/ Outparcel	SF/AC	Status	Tenant
	1	TBD	Available	
	2	2,000	Leased	Dentist
	3	3,000	Leased	Liquor Store
	4	TBD	Available	
Outparcel	1	1.01	Available	
	2	0.86	In Lease Review	

KEY Available Leased LOI in Process In Lease Review



Shops at Palm Bay

St. Johns Heritage Pkwy & Emerson Drive, Palm Bay, FL

Renderings

Shops at Palm Bay

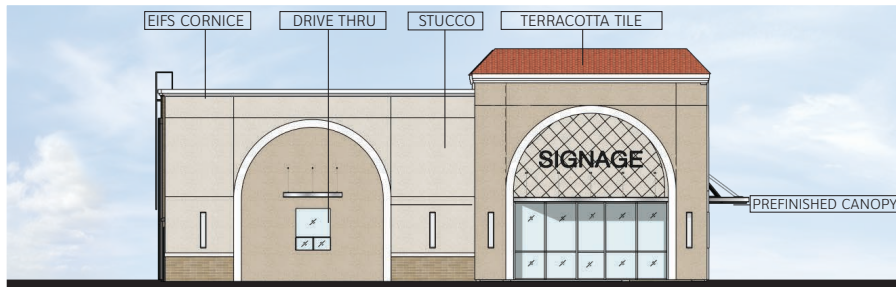


Shops at Palm Bay

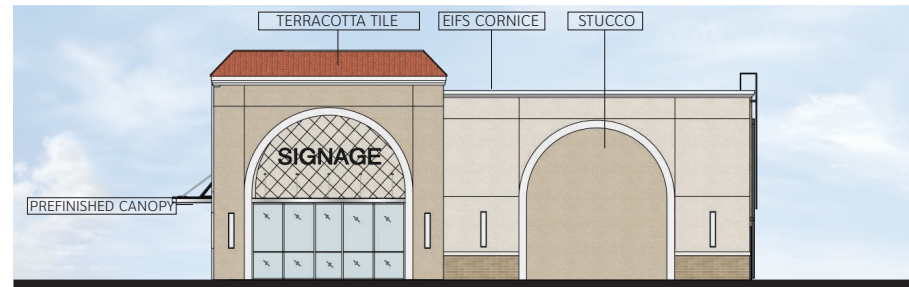
St. Johns Heritage Pkwy & Emerson Drive, Palm Bay, FL

Renderings

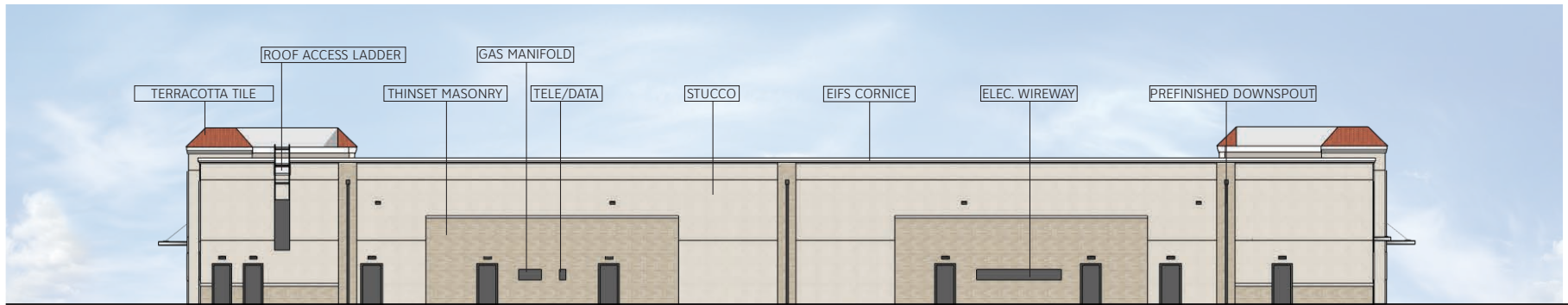
Shops at Palm Bay



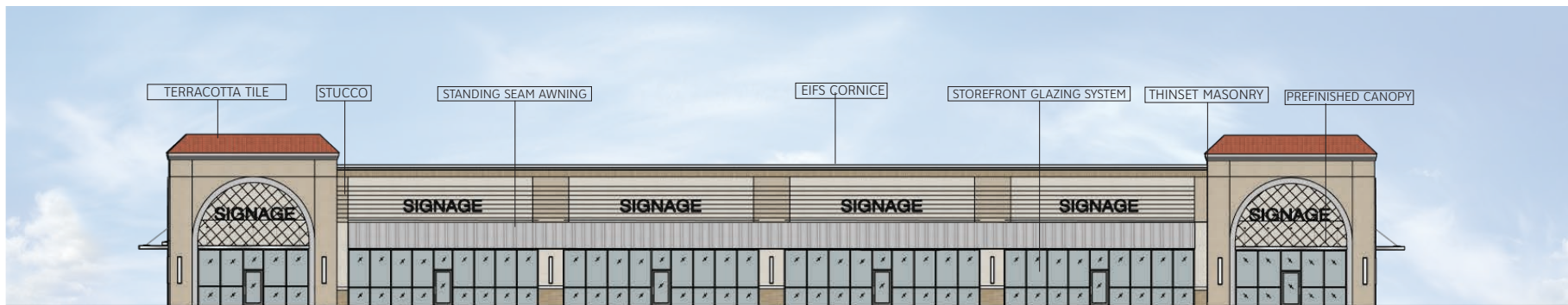
EXTERIOR ELEVATION - WEST



EXTERIOR ELEVATION - EAST



EXTERIOR ELEVATION - NORTH



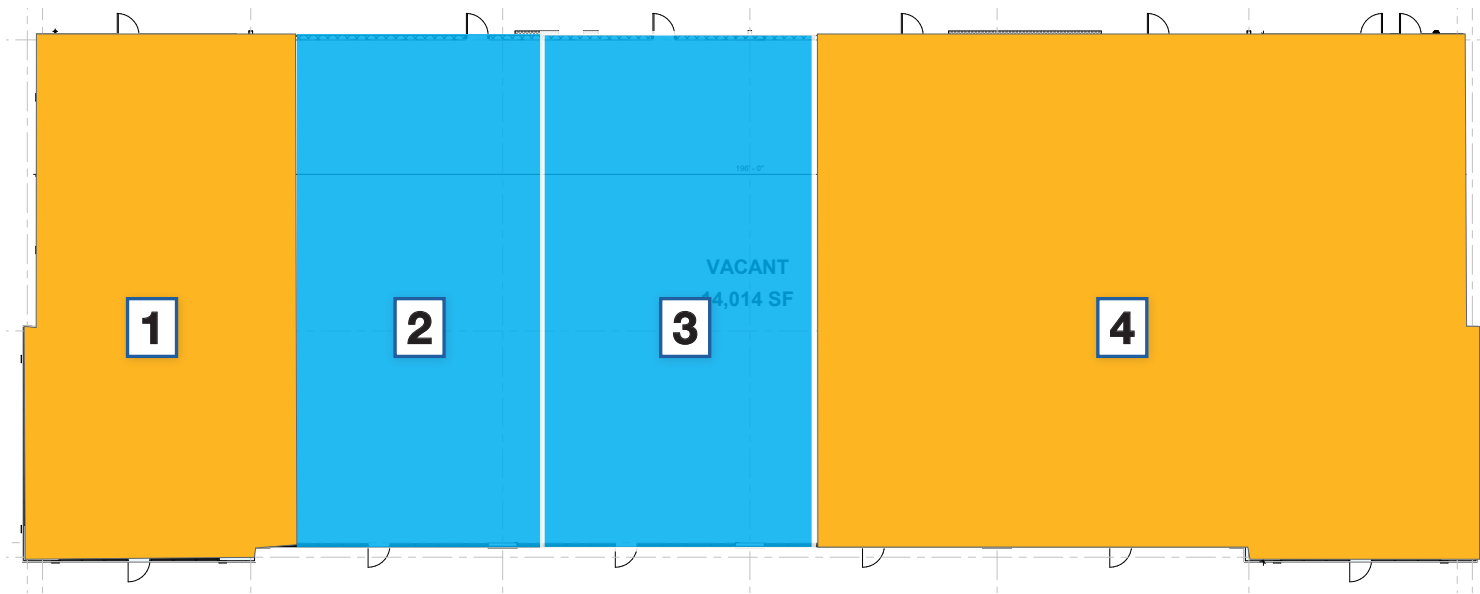
EXTERIOR ELEVATION - SOUTH

Shops at Palm Bay

St. Johns Heritage Pkwy & Emerson Drive, Palm Bay, FL

LOD

Unit/ Outparcel	SF/AC	Status	Tenant
1	TBD	Available	
2	2,000	Leased	Dentist
3	3,000	Leased	Liquor Store
4	TBD	Available	



KEY	Available	Leased	LOI in Process	In Lease Review
-----	-----------	--------	----------------	-----------------

Shops at Palm Bay

St. Johns Heritage Pkwy & Emerson Drive, Palm Bay, FL

Looking Southeast

	Unit/ Outparcel	SF/AC	Status	Tenant
	1	TBD	Available	
	2	2,000	Leased	Dentist
	3	3,000	Leased	Liquor Store
	4	TBD	Available	
Outparcel	1	1.01	Available	
	2	0.86	In Lease Review	

KEY Available Leased LOI in Process In Lease Review



Shops at Palm Bay

St. Johns Heritage Pkwy & Emerson Drive, Palm Bay, FL

Looking South

Unit/ Outparcel	SF/AC	Status	Tenant
1	TBD	Available	
2	2,000	Leased	Dentist
3	3,000	Leased	Liquor Store
4	TBD	Available	
Outparcel			
1	1.01	Available	
2	0.86	In Lease Review	

KEY Available Leased LOI in Process In Lease Review



LENNAR
DEVELOPMENT
4,000 Units

LENNAR
DEVELOPMENT
4,000 Units

LENNAR
DEVELOPMENT
4,000 Units

Future
Commercial
Development

Proposed
Self Storage

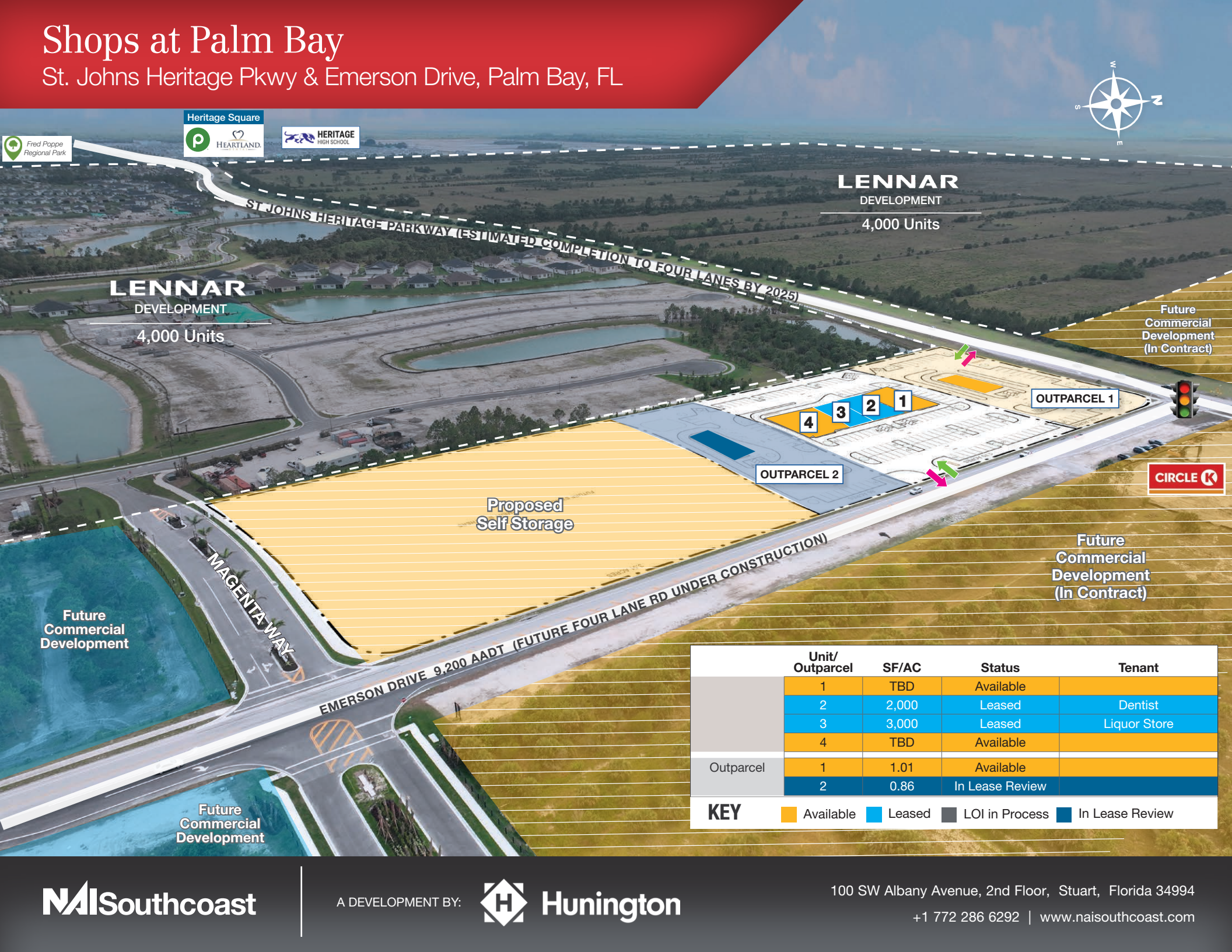
Future
Commercial
Development

Future
Commercial
Development
(In Contract)

CIRCLE K

Shops at Palm Bay

St. Johns Heritage Pkwy & Emerson Drive, Palm Bay, FL



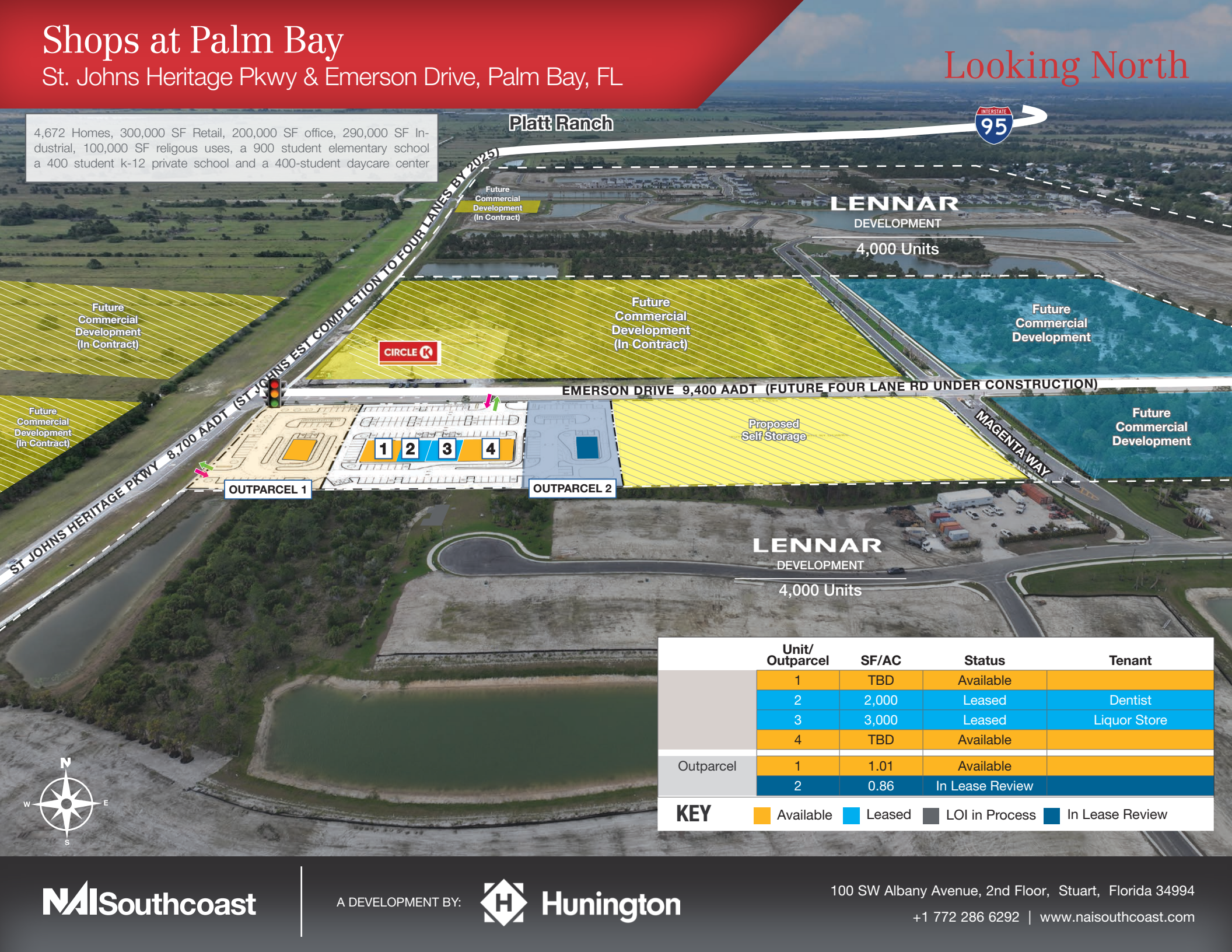
	Unit/ Outparcel	SF/AC	Status	Tenant
	1	TBD	Available	
	2	2,000	Leased	Dentist
	3	3,000	Leased	Liquor Store
	4	TBD	Available	
Outparcel	1	1.01	Available	
	2	0.86	In Lease Review	
KEY Available Leased LOI in Process In Lease Review				

Shops at Palm Bay

St. Johns Heritage Pkwy & Emerson Drive, Palm Bay, FL

Looking North

4,672 Homes, 300,000 SF Retail, 200,000 SF office, 290,000 SF Industrial, 100,000 SF religious uses, a 900 student elementary school a 400 student k-12 private school and a 400-student daycare center

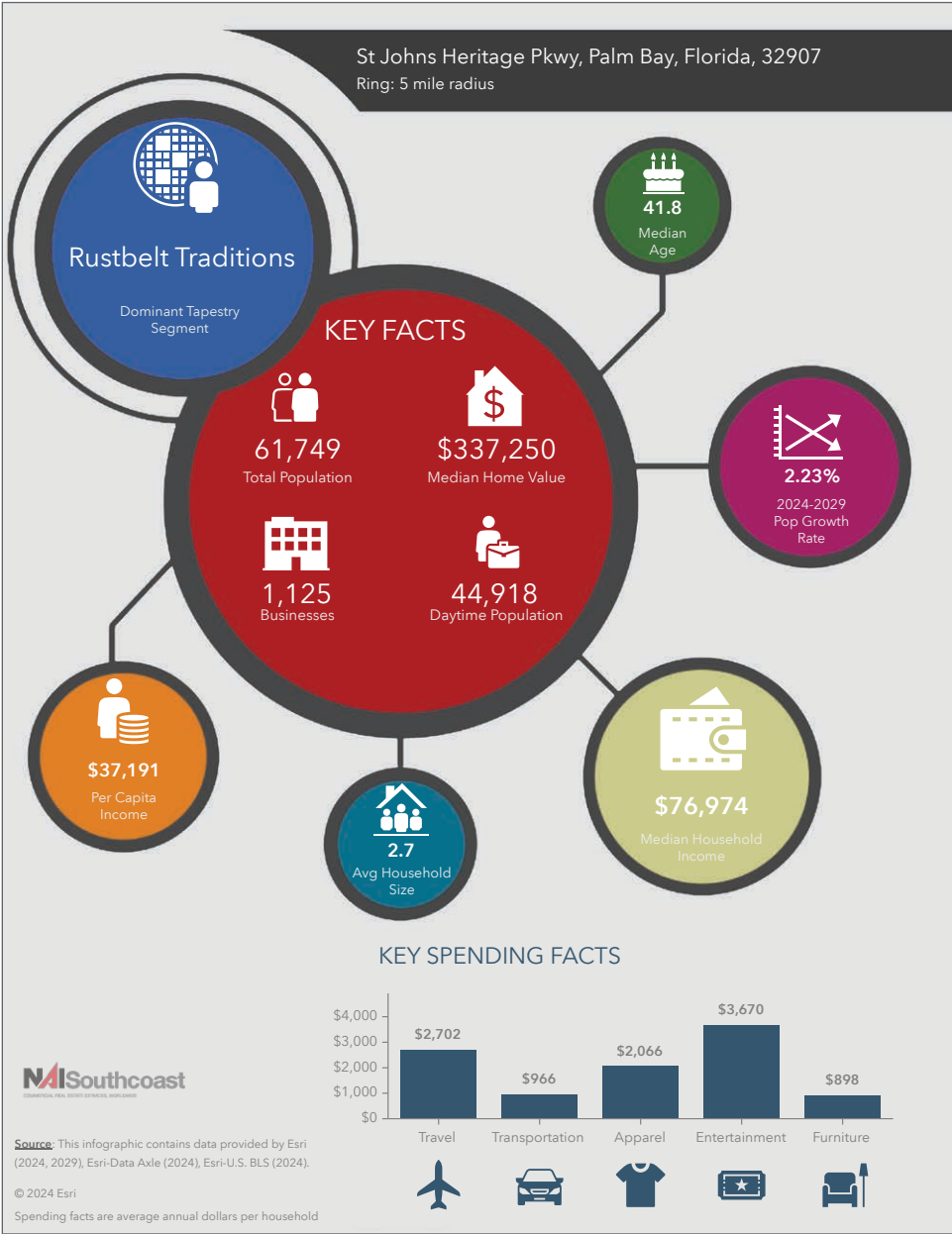


	Unit/ Outparcel	SF/AC	Status	Tenant
	1	TBD	Available	
	2	2,000	Leased	Dentist
	3	3,000	Leased	Liquor Store
	4	TBD	Available	
Outparcel	1	1.01	Available	
	2	0.86	In Lease Review	
KEY				
Available Leased LOI in Process In Lease Review				

Shops at Palm Bay

St. Johns Heritage Pkwy & Emerson Drive, Palm Bay, FL

2024 Demographics



Population

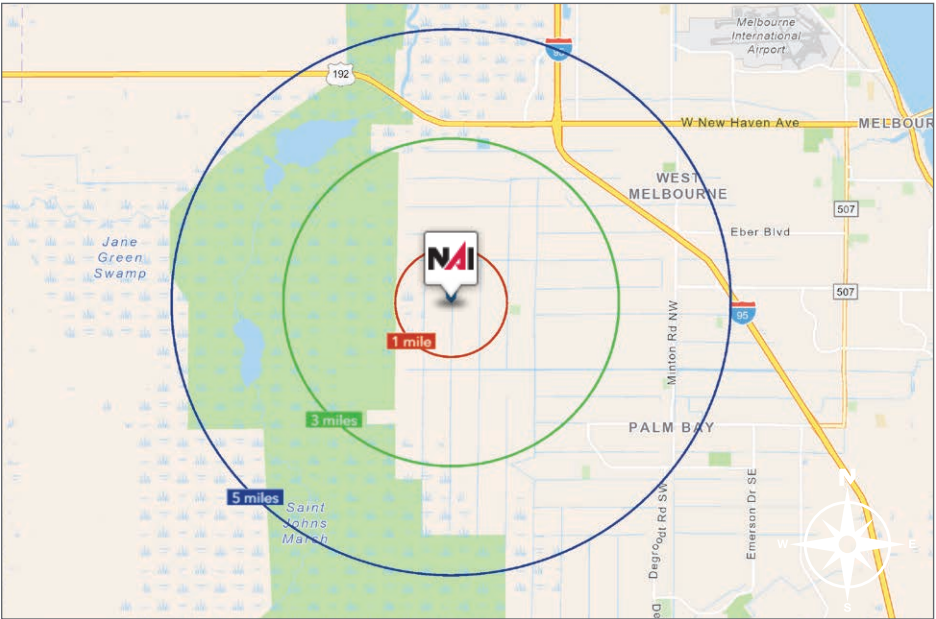
- 1 Mile: 2,388
- 3 Mile: 22,850
- 5 Mile: 61,749

Average Household Income

- 1 Mile: \$80,664
- 3 Mile: \$92,369
- 5 Mile: \$100,723

Median Age

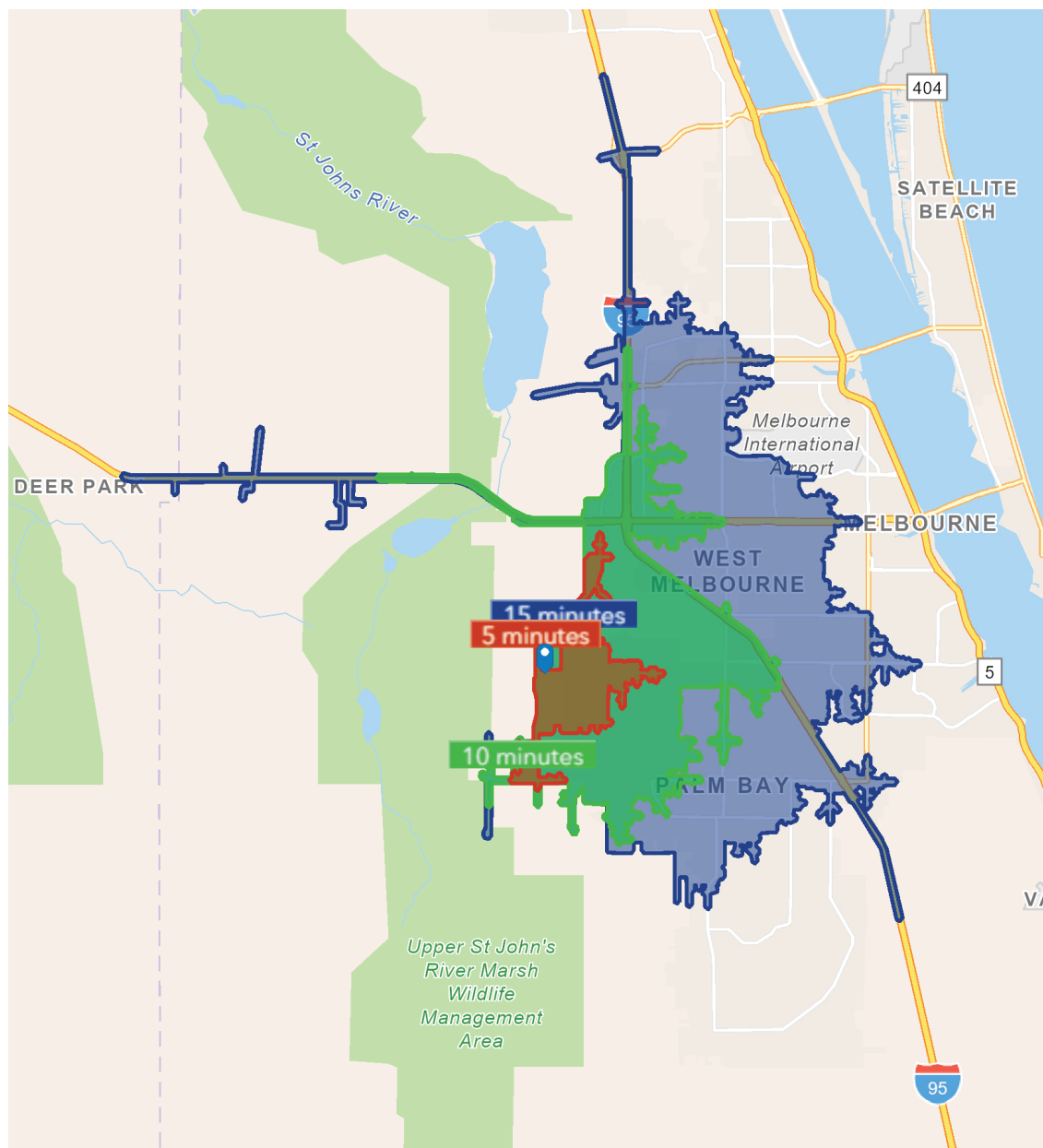
- 1 Mile: 43.1
- 3 Mile: 42.0
- 5 Mile: 41.8



Shops at Palm Bay

St. Johns Heritage Pkwy & Emerson Drive, Palm Bay, FL

Drive Time



5 Minutes	10 Minutes	15 Minutes
8,889 2010 Population	28,991 2010 Population	77,915 2010 Population
9,879 2024 Population	38,185 2024 Population	102,022 2024 Population
11.1% 2010-2024 Population Growth	31.7% 2010-2024 Population Growth	30.9% 2010-2024 Population Growth
0.68% 2024-2029 (Annual) Est. Population Growth	0.95% 2024-2029 (Annual) Est. Population Growth	1.00% 2024-2029 (Annual) Est. Population Growth
43.1 2024 Median Age	41.9 2024 Median Age	42.8 2024 Median Age
\$82,576 Average Household Income	\$100,433 Average Household Income	\$97,821 Average Household Income
31.4% Percentage with Associates Degree or Better	40.5% Percentage with Associates Degree or Better	44.6% Percentage with Associates Degree or Better
56.4% Percentage in White Collar Profession	63.0% Percentage in White Collar Profession	63.0% Percentage in White Collar Profession

City Overview

City of Palm Bay, Florida



Palm Bay, Florida, situated along the picturesque eastern coast of the state, is a vibrant city that seamlessly blends natural beauty with urban development. As the largest city in Brevard County, Palm Bay offers residents and visitors a diverse array of attractions, stunning landscapes, and a thriving community spirit.

The city's claim to fame lies in its stunning waterfront areas, with the Indian River Lagoon to the west and the Atlantic Ocean to the east. These bodies of water not only provide breathtaking views but also offer recreational opportunities such as boating, fishing, and water sports. The Turkey Creek Sanctuary, a nature reserve within the city, further enhances Palm Bay's commitment to preserving its rich ecological diversity.

Palm Bay is home to a mix of residential neighborhoods, each with its own unique character. From family-friendly communities with top-rated schools to upscale waterfront properties, the city caters to a diverse range of lifestyles. The housing market reflects the city's growth, with a combination of modern developments and established neighborhoods, providing a range of options for prospective residents.

The city's commitment to education is evident through its well-regarded schools and educational institutions. Palm Bay is served by the Brevard County School District, ensuring quality education for students at all levels. Higher education opportunities are also available with the nearby Florida Institute of Technology, offering a range of academic programs.

Palm Bay's economic landscape is shaped by a mix of industries, including aerospace and technology. The presence of major employers in these sectors has contributed to the city's economic stability and job growth. Additionally, the city's strategic location along major transportation routes facilitates commerce and trade.

Residents and visitors alike can enjoy a variety of recreational activities in Palm Bay. The city boasts numerous parks, sports facilities, and cultural venues. Fred Poppe Regional Park, for example, offers sports fields, playgrounds, and picnic areas, providing a space for community gatherings and outdoor enjoyment.

Palm Bay, Florida, stands out as a city that harmoniously blends natural beauty, a diverse community, and economic opportunities. With its stunning waterfront, educational excellence, and recreational offerings, Palm Bay has become a sought-after destination for those seeking a balanced and fulfilling lifestyle on Florida's Space Coast.

Regional Overview

Brevard County, FL

Brevard County, on Florida's east coast, is renowned for its natural wonders, space exploration, and vibrant communities. The county, encompassing various cities and towns, provides a unique mix of coastal beauty, educational excellence, and a rich cultural tapestry.

At its core, Brevard County is synonymous with space exploration, housing the Kennedy Space Center, a renowned spaceport that launched historic missions like the Apollo moon landings and Space Shuttle launches. This has made the Space Coast a hub for aerospace and technology industries.

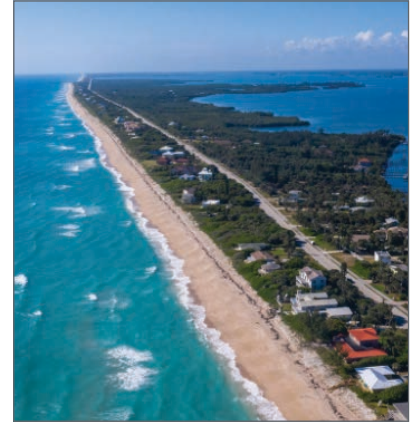
The county's Atlantic Ocean coastline offers stunning beaches and recreational opportunities, from bustling Cocoa Beach to the serene Canaveral National Seashore. The Indian River Lagoon adds to the area's natural charm.

Brevard County hosts diverse communities, each with unique character and amenities. Melbourne, the largest city, features residential neighborhoods, cultural attractions, and educational institutions. Titusville, with historic charm, serves as a gateway to the Kennedy Space Center and Merritt Island National Wildlife Refuge. Satellite Beach and Palm Bay offer varied housing options and community experiences.

Education is a priority, with the Brevard County School District ensuring academic excellence. Higher education is accessible through institutions like the Florida Institute of Technology.

Recreational activities are abundant, from outdoor adventures in parks to cultural events. The county's commitment to preserving natural beauty is evident in conservation areas and wildlife sanctuaries.

Brevard County, Florida, offers a captivating blend of space exploration, coastal beauty, and diverse communities. With a rich history, educational opportunities, and innovation, Brevard County remains a place where residents enjoy a high quality of life amidst the wonders of Florida's Space Coast.





J. Jeffery Allman, Jr.
Principal | Broker Associate
+1 772 286-6292 c +1 772 283 1555
jeff@naisouthcoast.com



Nikolaus M. Schroth, CCIM
Principal | Broker Associate
+1 772 286 6292
nikschroth@naisouthcoast.com



James McKinney
Sales Associate
+1 772 349 3414
jamesmckinney@naisouthcoast.com



Stephen Goodfellow
Sales Associate
+1 561 510 3911
stephen@naisouthcoast.com

NA Southcoast
www.naisouthcoast.com

Shops at Palm Bay St. Johns Heritage Pkwy & Emerson Drive, Palm Bay, FL



RETAIL
FOR LEASE

OUTPARCELS
FOR SALE/GROUND LEASE

Call for Pricing Guidance

A DEVELOPMENT BY:



NO WARRANTY OR REPRESENTATION, EXPRESS OR IMPLIED, IS MADE AS TO THE ACCURACY OF THE INFORMATION CONTAINED HEREIN, AND THE SAME IS SUBMITTED SUBJECT TO ERRORS, OMISSIONS, CHANGE OF PRICE, RENTAL OR OTHER CONDITIONS, PRIOR SALE, LEASE OR FINANCING, OR WITHDRAWAL WITHOUT NOTICE, AND OF ANY SPECIAL LISTING CONDITIONS IMPOSED BY OUR PRINCIPALS NO WARRANTIES OR REPRESENTATIONS ARE MADE AS TO THE CONDITION OF THE PROPERTY OR ANY HAZARDS CONTAINED THEREIN ARE ANY TO BE IMPLIED.