



Sumter County Commercial Property - Tract B

U.S. 301, Sumterville, Florida 33585

Dean Saunders, ALC, CCIM
863-287-8340
dean@saundersrealestate.com

Zeb Griffin, ALC
352-630-7547
zeb@saundersrealestate.com

PROPERTY OVERVIEW

301



Offering Summary

Sale Price:	\$3,345,782
Lot Size:	21.5 ± Acres*
State:	Florida
County:	Sumter
City:	Sumterville
Property Type:	Development Land

Property Overview

Sumter County Commercial Property - Tract B is roughly 21.5 ± acres of development land located in a rapidly growing part of the county. The subject property is entirely uplands, zoned CL (light commercial) with a future land use of commercial.

*The seller is willing to offer the property for sale in three separate configurations. A 10.63 ± acre parcel (Tract A), a 21.5 ± acre parcel (Tract B), and in its entirety at 32 ± acres. Please see the parcel configuration map on page 5 for further details.

Whether purchased separately or as a whole, this property presents an excellent opportunity to acquire vacant land in the Sumter County market area. Nearby development pressure from the Villages and other commercial activity ensure the future viability of the subject property. The parcel benefits from a strategic position just 3.5 ± miles east of I-75, providing excellent access to regional markets including Tampa, The Villages, and Ocala. The site's immediate surroundings include a mix of light commercial, institutional, and residential uses.

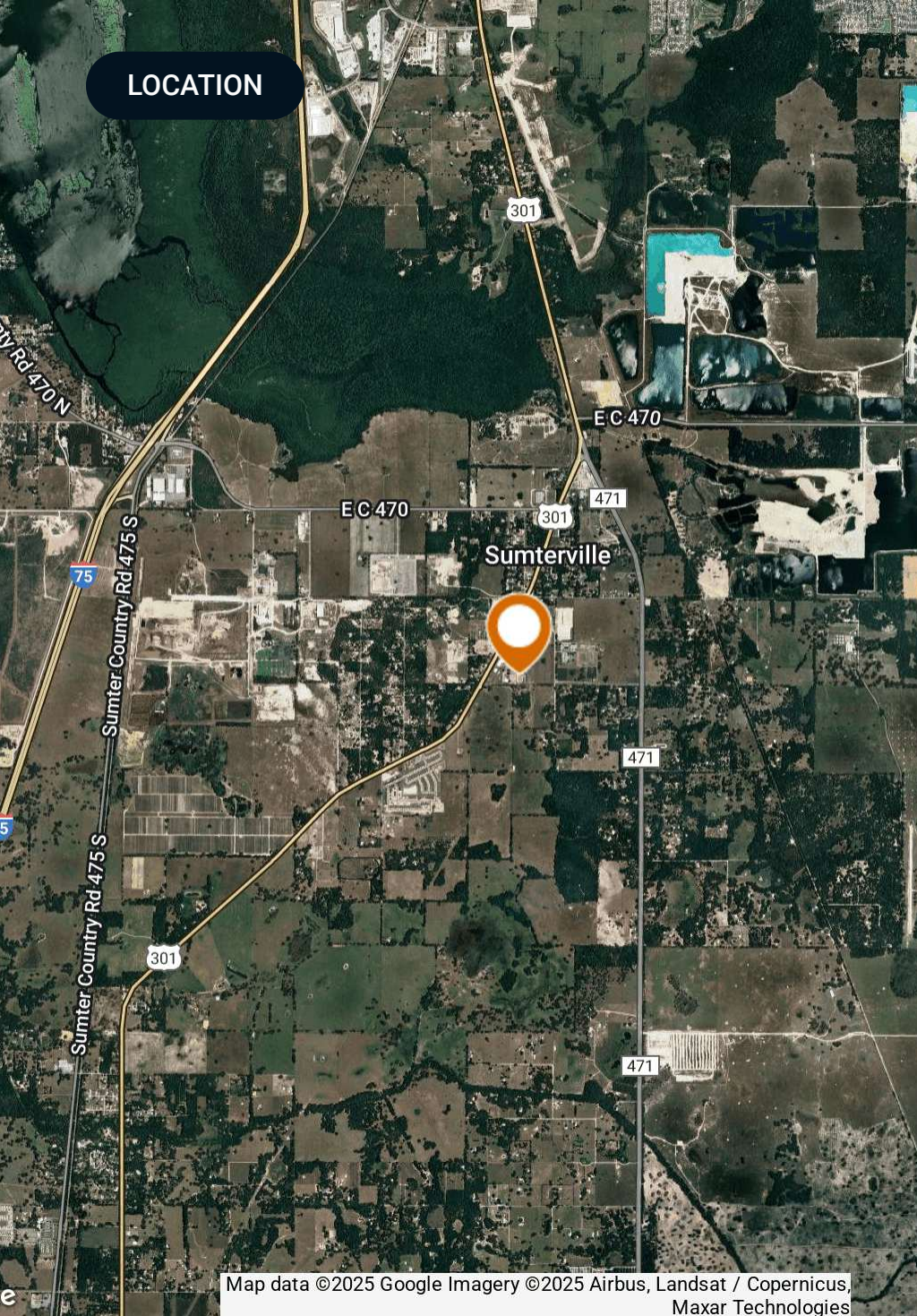
SPECIFICATIONS & FEATURES



Specifications & Features

Uplands / Wetlands:	100% uplands
Soil Types:	Lake Fine Sand Tavares Fine Sand Millhopper Sand Astatula Fine Sand
Zoning / FLU:	Zoning: CL (light commercial) FLU: Commercial
Road Frontage:	Tract A & B: 875 ± feet on Hwy 301, 2,146 ± feet on CR 526, and 592 ± feet on CR 528

LOCATION



Location & Driving Directions

Parcel: J24C013

GPS: 28.738334, -82.0662652

Driving Directions:

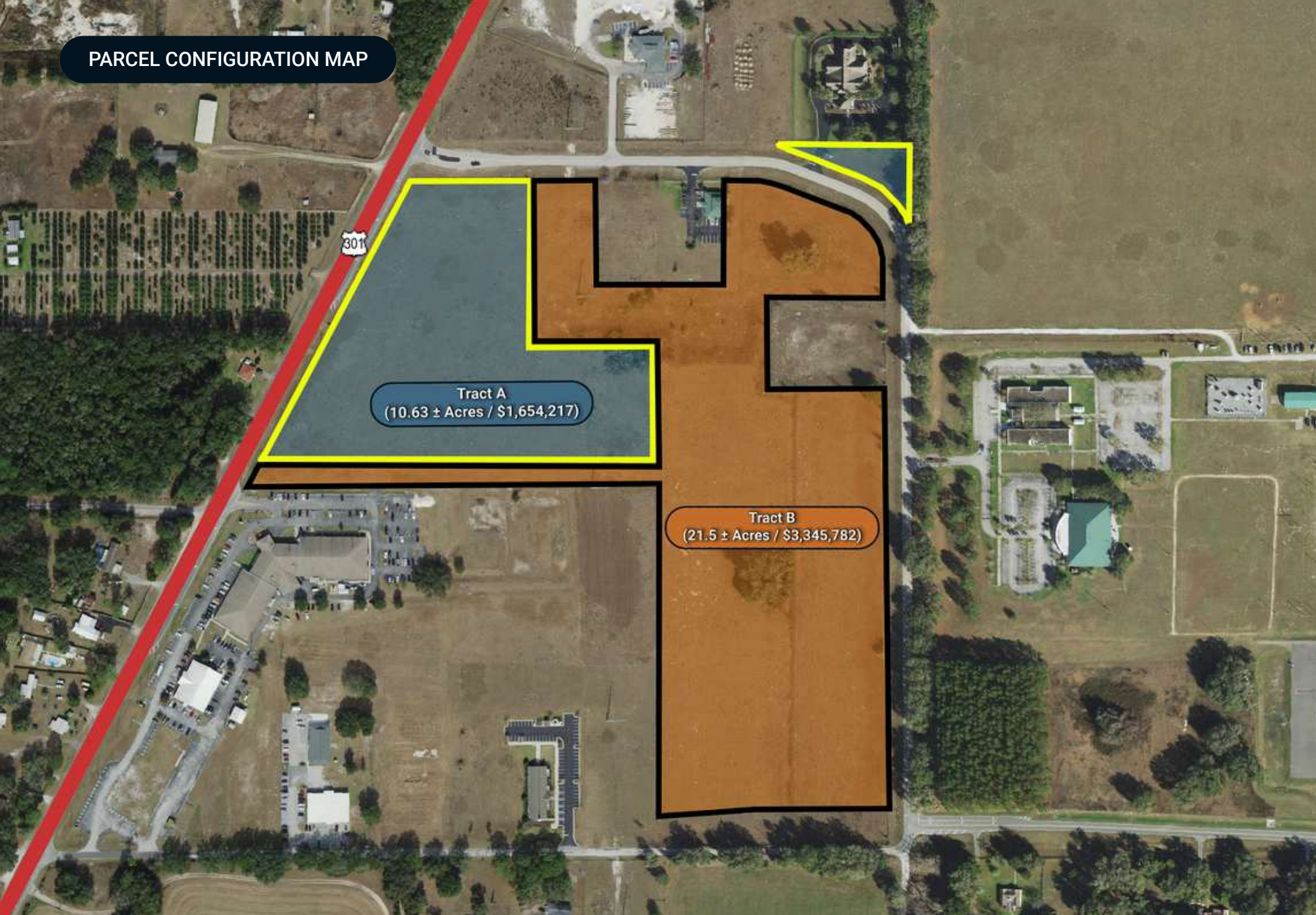
- From I-75 take CR 470 east for 2.5 miles
- Then take US Highway 301 South for 3/4 of a mile
- The subject property will be on the east side of the road at the intersection of CR 526 and US Highway 301.

Showing Instructions:

Please contact the listing agents.

Map data ©2025 Google Imagery ©2025 Airbus, Landsat / Copernicus, Maxar Technologies

PARCEL CONFIGURATION MAP



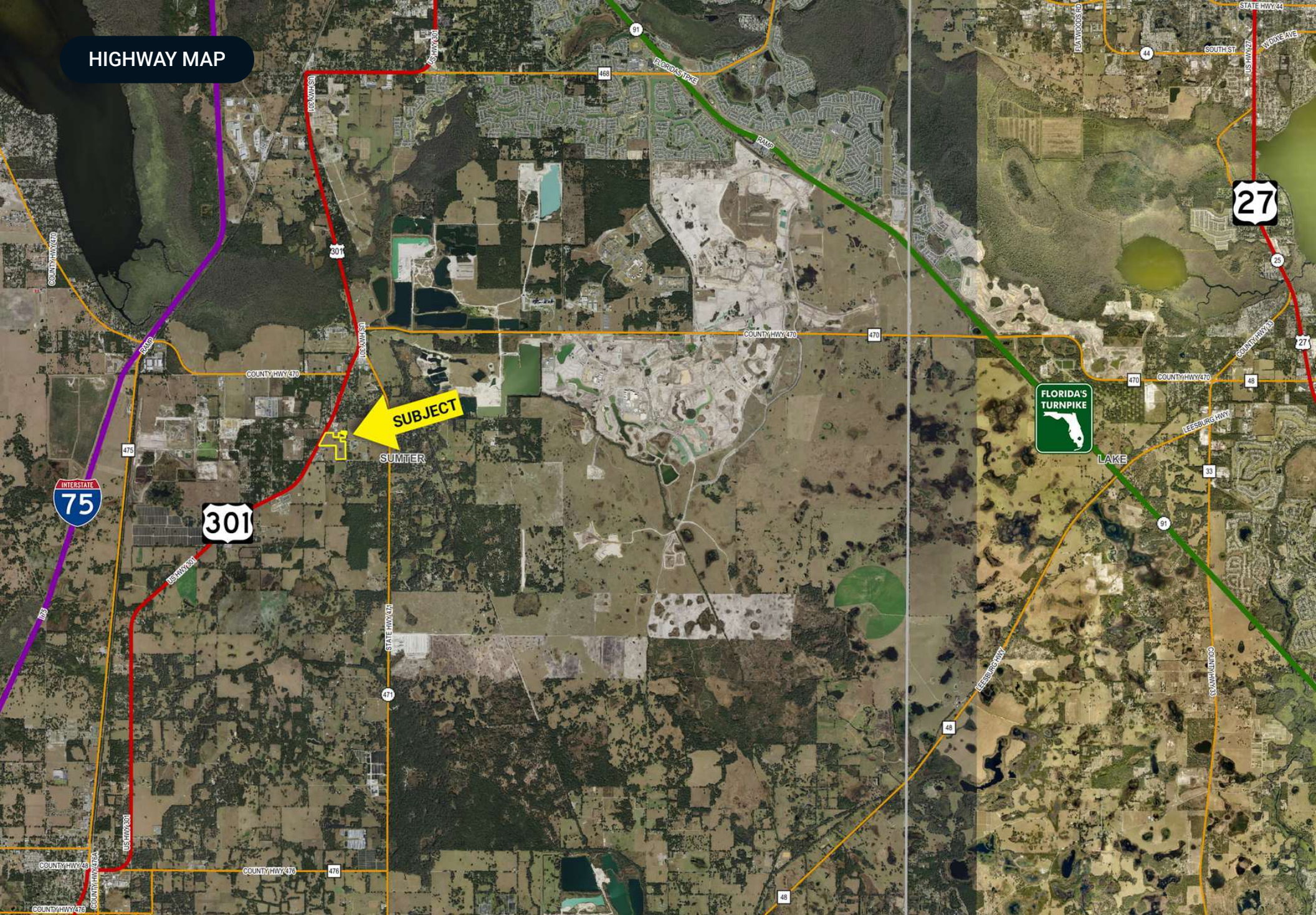
Tract A
(10.63 ± Acres / \$1,654,217)

Tract B
(21.5 ± Acres / \$3,345,782)

PARCEL CONFIGURATION AERIAL



HIGHWAY MAP



ADDITIONAL PHOTOS





SAUNDERS
REAL ESTATE



SAUNDERS
LAND



SAUNDERS
COMMERCIAL

Serving the Southeast

At Saunders Real Estate, we deliver full-service real estate solutions across the Southeast, built on more than 30 years of trusted experience. Our dedicated teams—experts in both land and commercial real estate—offer tailored guidance backed by deep regional insight and a proven track record. We believe that successful outcomes start with strong relationships built on trust and a shared commitment to your goals.



877-518-5263 • info@saundersrealestate.com