

Fully Entitled Senior Living Site
For Sale

World's Most Famous Beach



316 North Clyde Morris Blvd

Daytona Beach, Florida 32114

Property Highlights

- Fully entitled 198 Unit Senior Living site - turnkey development opportunity
- 11.3± acre site - direct access from Halifax Medical Center Drive
- Directly across from Halifax Health Medical Center Campus in Daytona Beach
- Close proximity to various medical center, dining and recreation centers in the area
- Immediate access to International Speedway Blvd, from I-95 to the beach
- Minutes to I-95, I-4, Daytona Beach International Airport, Daytona International Speedway and the World's Most Famous Beach



Sale Price: \$5,100,000

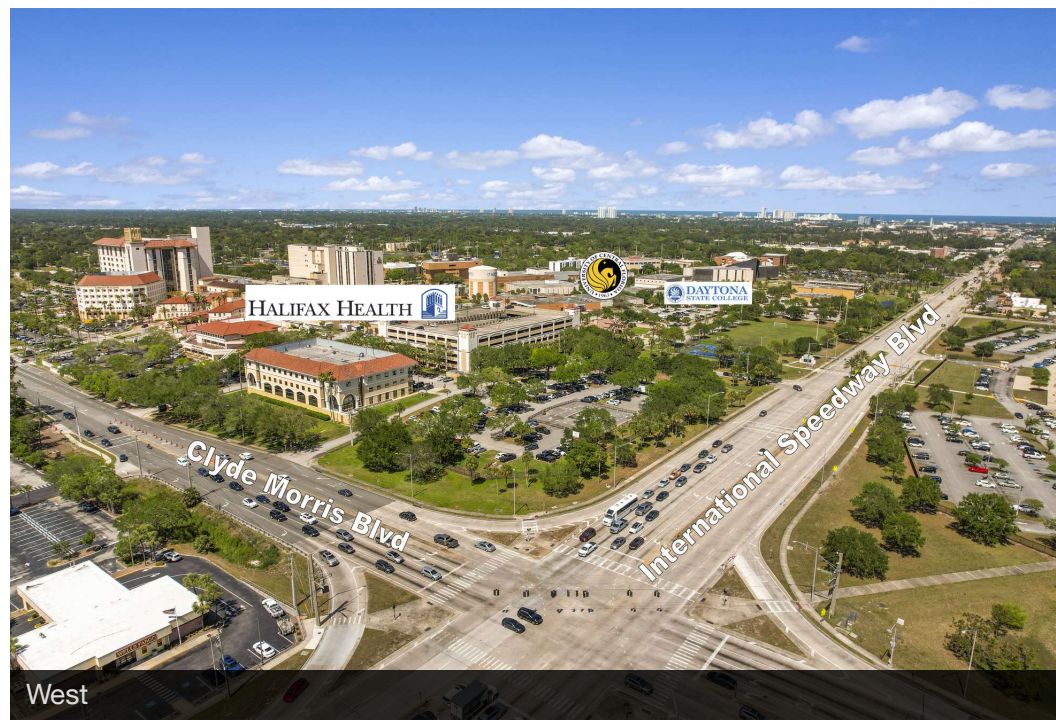
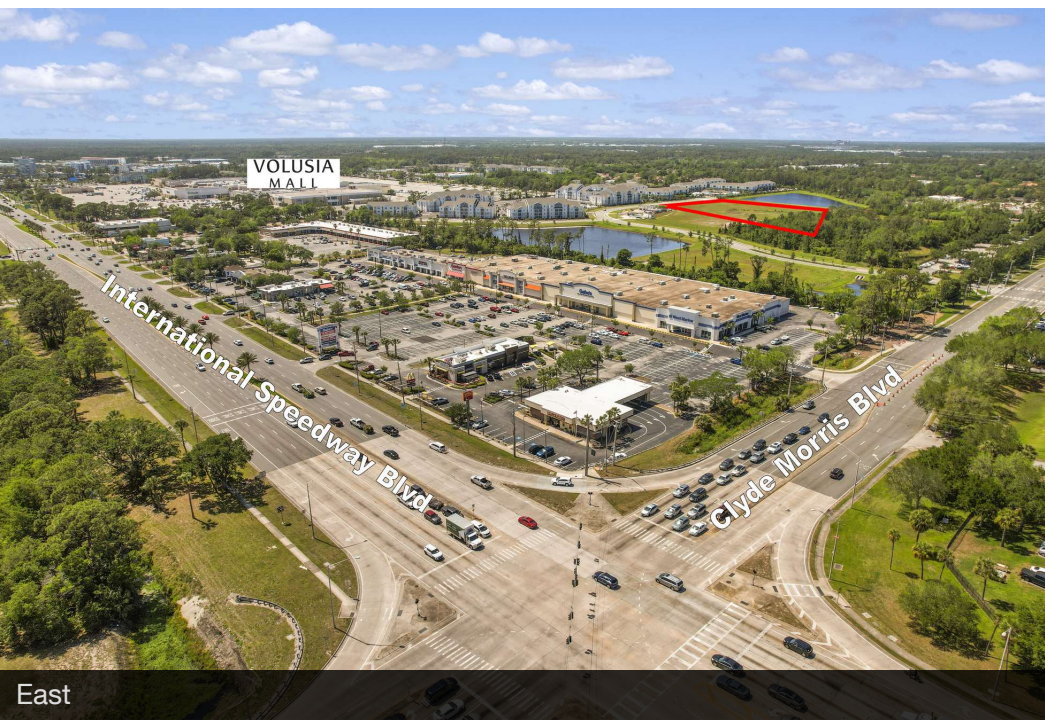
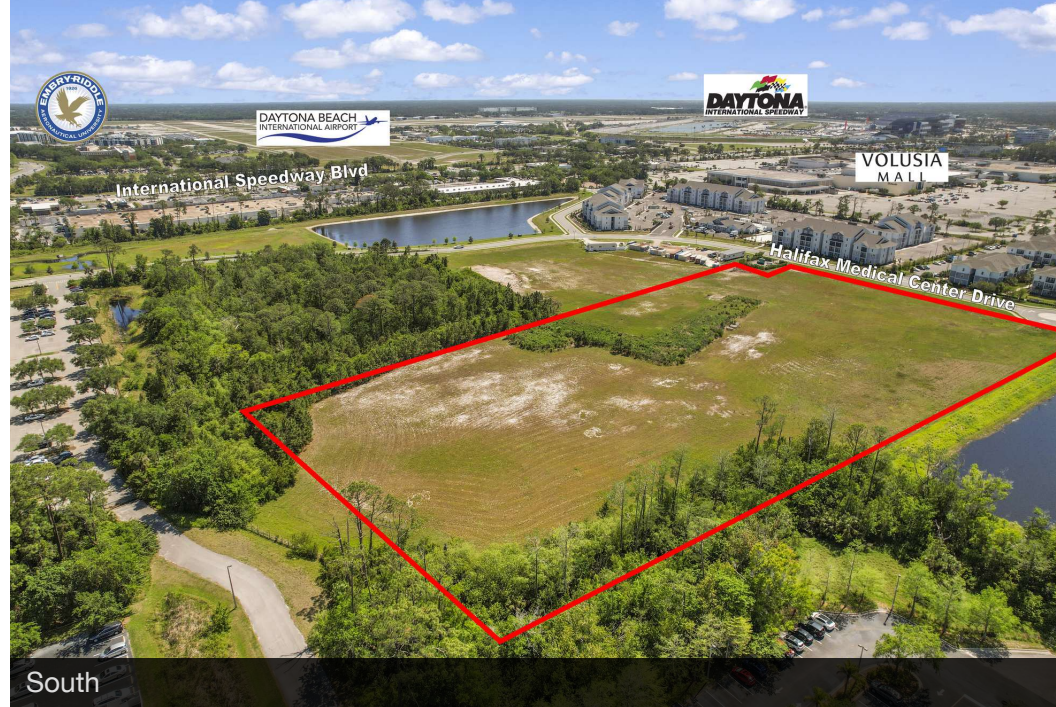
For more information

Ted Lightman, CCIM

O: 386 238 3600

tlightman@realvest.com

Property Aerials

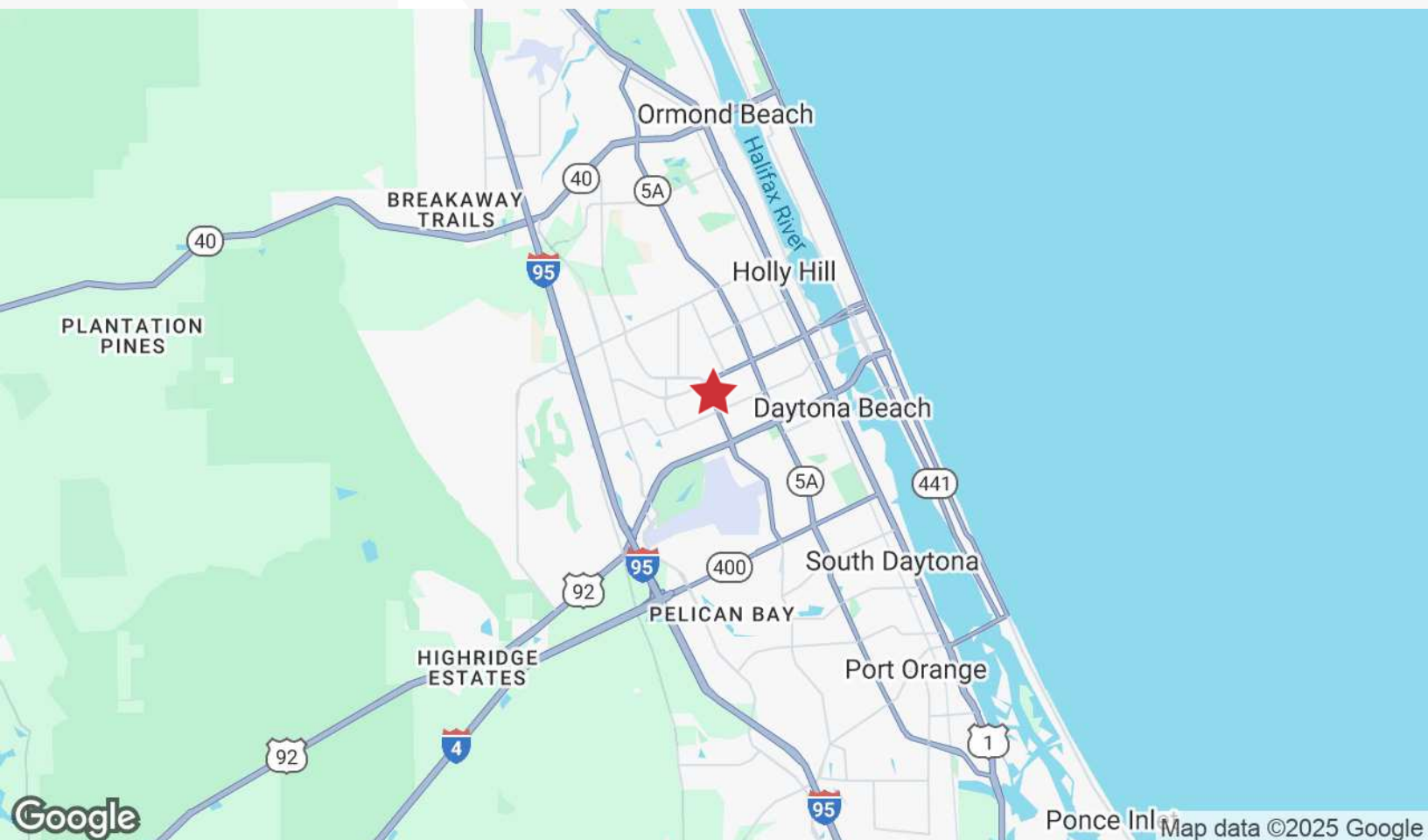
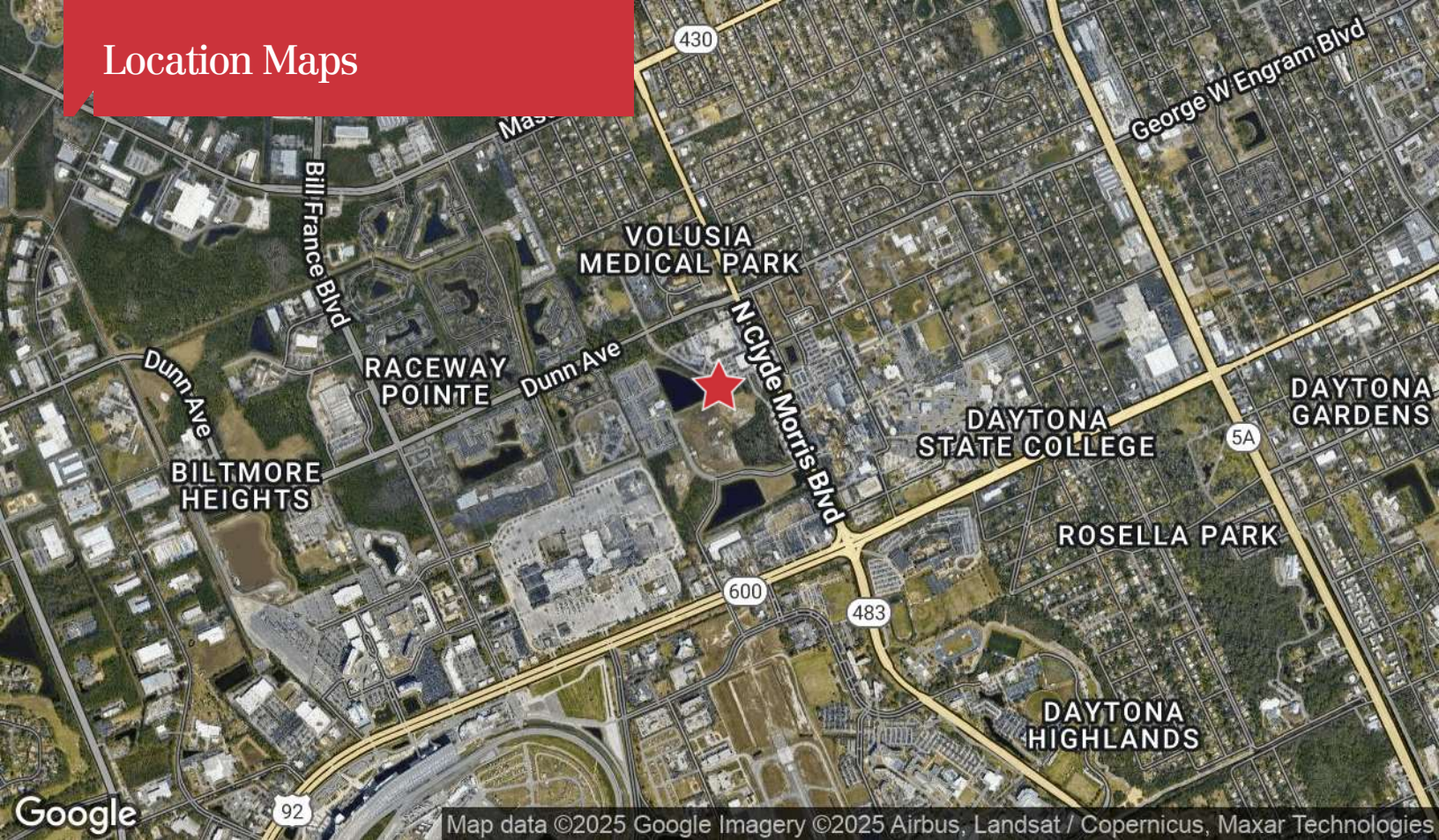


Retailer Map

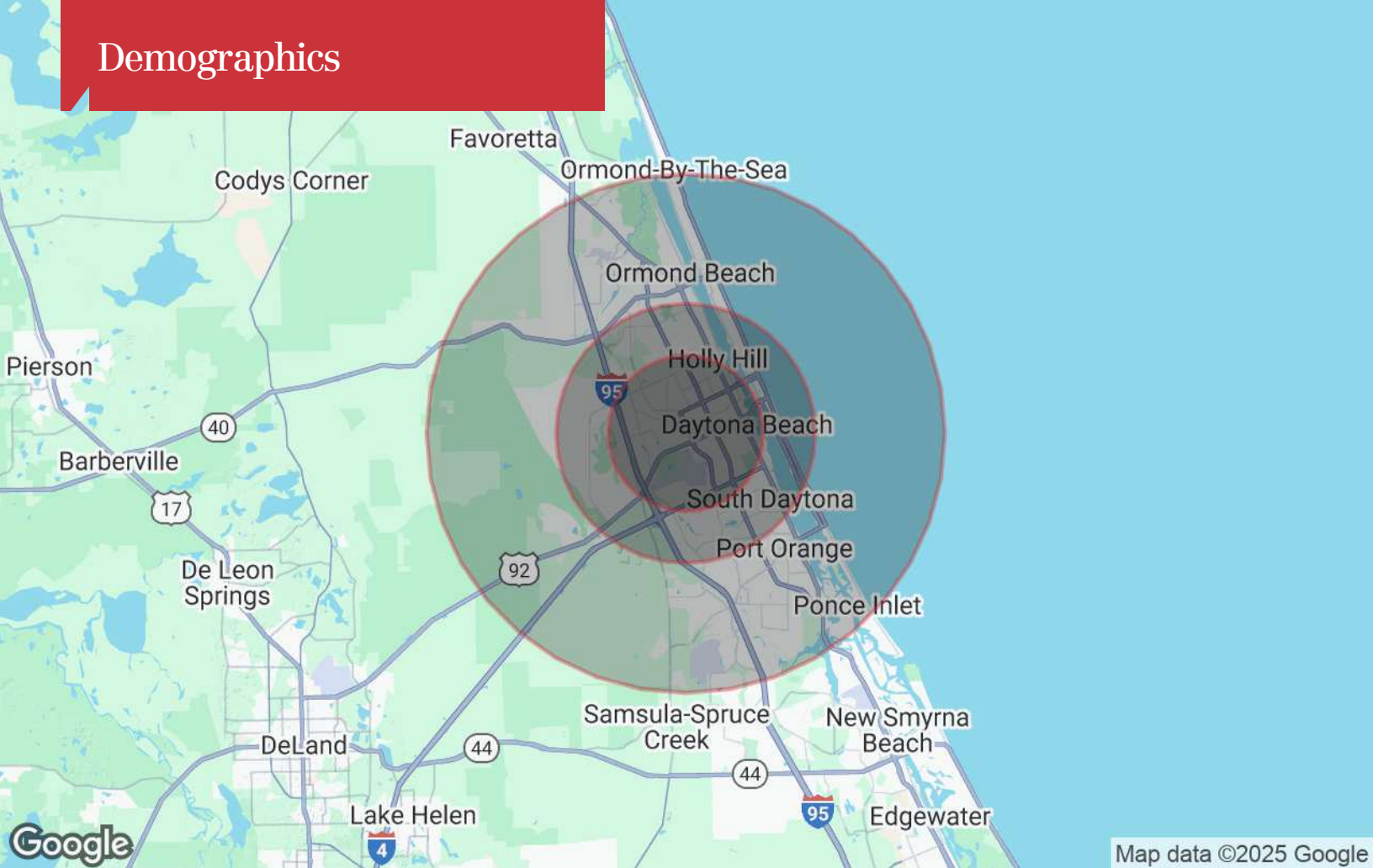


Map data ©2025 Imagery ©2025 Airbus,
Maxar Technologies

Location Maps



Demographics



Population

	3 Miles	5 Miles	10 Miles
TOTAL POPULATION	62,128	131,098	239,029
MEDIAN AGE	41	45	47
MEDIAN AGE (MALE)	40	44	46
MEDIAN AGE (FEMALE)	42	46	48

Households & Income

	3 Miles	5 Miles	10 Miles
TOTAL HOUSEHOLDS	25,370	58,832	106,053
# OF PERSONS PER HH	2.4	2.2	2.3
AVERAGE HH INCOME	\$56,742	\$63,936	\$75,127
AVERAGE HOUSE VALUE	\$210,663	\$245,393	\$298,830

* Demographic data derived from 2020 ACS - US Census