

INDUSTRIAL MAINTENANCE BUILDING | TRUCK PARKING FOR LEASE

95-135 HERMIT SMITH ROAD
APOPKA, FL 32703



PROPERTY HIGHLIGHTS

135 HERMIT SMITH ROAD

Building Size: 9,000± SF

Doors: Three (3) drive in doors

Land Size: 7.23 Acres

Use: Truck Parking

95 HERMIT SMITH ROAD

Land Size: 5.04 Acres

Use: Truck Parking

TOTAL LAND SIZE: 12.27 Acres

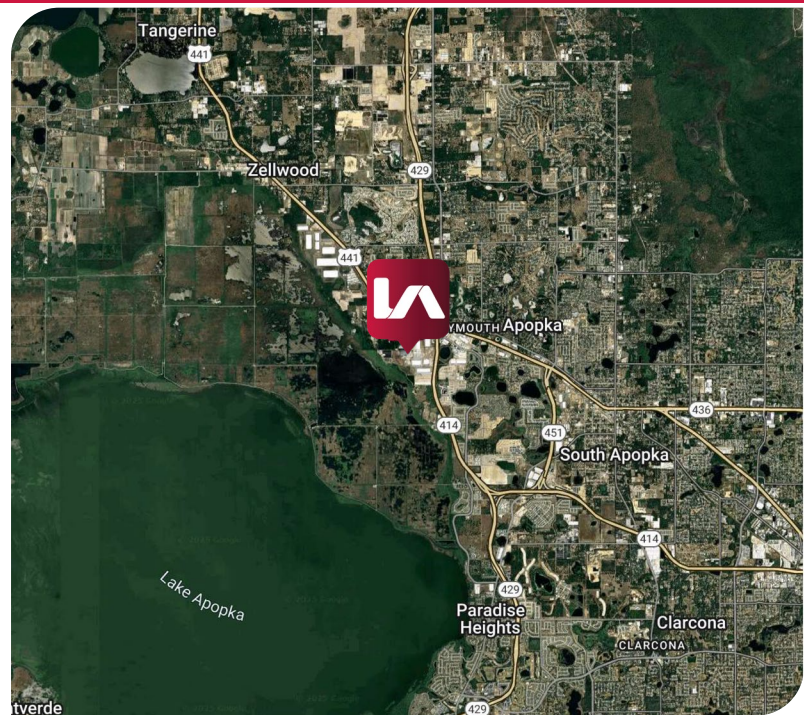
LEASE RATES:

\$55,000/MTH 7.23 Acres

\$30,000/MTH 5.04 Acres

\$70,000/MTH Together

Monthly Approximate Op Ex: \$11,135/MTH



Leasing Contacts:

Christopher "CJ" Griffith, SIOR
Vice President
cgriffith@lee-associates.com
D 321.281.8508

Ryan Griffith
Vice President
rgriffith@lee-associates.com
D 321.281.8512

INDUSTRIAL BUILDING & TRUCK PARKING
95-135 HERMIT SMITH ROAD
APOPKA, FL 32703



Leasing Contacts:

Christopher "CJ" Griffith, SIOR
Vice President
cgriffith@lee-associates.com
D 321.281.8508

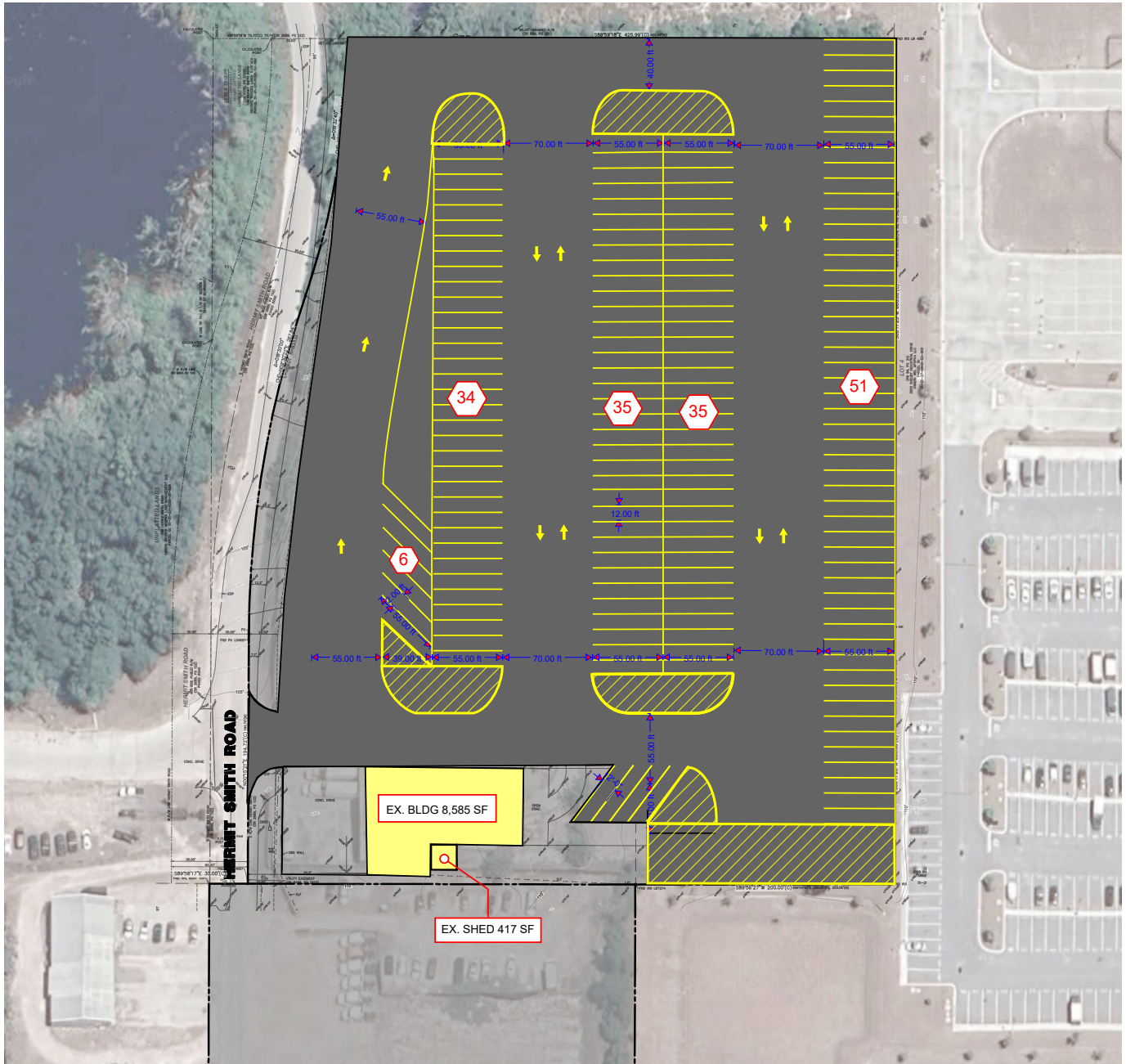
Ryan Griffith
Vice President
rgriffith@lee-associates.com
D 321.281.8512

All information furnished regarding property for sale, rental or financing is from sources deemed reliable, but no warranty or representation is made to the accuracy thereof and same is submitted to errors, omissions, change of price, rental or other conditions prior to sale, lease or financing or withdrawal without notice. No liability of any kind is to be imposed on the broker herein.

INDUSTRIAL BUILDING & TRUCK PARKING
95-135 HERMIT SMITH ROAD
APOPKA, FL 32703



CONCEPTUAL PLAN



Leasing Contacts:

Christopher "CJ" Griffith, SIOR
Vice President
cgriffith@lee-associates.com
D 321.281.8508

Ryan Griffith
Vice President
rgriffith@lee-associates.com
D 321.281.8512

All information furnished regarding property for sale, rental or financing is from sources deemed reliable, but no warranty or representation is made to the accuracy thereof and same is submitted to errors, omissions, change of price, rental or other conditions prior to sale, lease or financing or withdrawal without notice. No liability of any kind is to be imposed on the broker herein.