



MULTI TENANT INDUSTRIAL PROPERTY UNITS FOR LEASE

Main Street Palm Bay Warehouse, Manufacturing, Distribution

1720 Main St NE Palm Bay, FL 32905

UP TO +/- 10,546 SF OF INDUSTRIAL SPACE

presented by:

BRIAN L. LIGHTLE, CCIM, SIOR, CRE

Founder | Broker Associate

321.863.3228

brian@teamlbr.com

EXECUTIVE SUMMARY

• 1720 Main St NE Palm Bay, FL 32905



OFFERING SUMMARY

Available SF: +/-10,546

Lease Rate: \$12.00 SF/yr (Gross)

Lot Size: 1.72 Acres

Year Built: 1973

Building Size: 32,000 SF

Zoning: LI

PROPERTY OVERVIEW

COMBINE SUITES 4-6 +/- 10,546 Configured as +/-2,779 sf of Office / Showroom Space and +/-7767 sf Warehouse PLUS Bonus +/-1,006sf Mezzanine Space, not included in total square footage. Ceiling Height 20' Wooden OH Deck in Warehouse. 4 Bathrooms In Combined Units. Currently Non HVAC Warehouse in Suite 4 but LL open to reinstalling if needed. One 14x14 OHD plus one currently blocked , One 12x12 OHD, plus one currently blocked. Blocked doors can be reopened depending on Tenant's needs.

FLEX OFFICE AND WAREHOUSE SUITE 4 - Office +/-2,779 and Warehouse +/-4,567 Ceiling Height 20' Wooden OH Deck , Bathroom in Warehouse and Offices Multiple Perimeter Offices, Break Area, Reception, Showroom.

WAREHOUSE ONLY Suite 6- +/-3200 sf Warehouse with Bonus Mezzanine Space. Two Bathrooms
Ceiling Height 20' ,One OH Door , **Non HVAC**

LOCATION OVERVIEW

Located north of Palm Bay Road in the Main Street Corporate Center
+/- less than half a mile to US Highway 1 (Dixie Highway)
+/- 2 Miles to I-95 at Palm Bay Road
+/- 2 Miles to US 192 at US 1 / East West Connector to Orlando

BRIAN L. LIGHTLE, CCIM, SIOR, CRE

Founder | Broker Associate
321.863.3228
brian@teamlbr.com

Lightle Beckner Robison, Inc.

321.722.0707 • teamlbr.com
70 W. Hibiscus Blvd.,
Melbourne, FL 32901

Information contained herein has been obtained through sources deemed reliable but cannot be guaranteed as to its accuracy. A purchaser or lessee is expected to verify all information to his/her own satisfaction. Zoning information subject to change and not warranted. Always confirm current requirements with local governing agencies.

• 1720 Main St NE Palm Bay, FL 32905



BRIAN L. LIGHTLE, CCIM, SIOR, CRE

Founder | Broker Associate
321.863.3228
brian@teamlbr.com

Information contained herein has been obtained through sources deemed reliable but cannot be guaranteed as to its accuracy. A purchaser or lessee is expected to verify all information to his/her own satisfaction. Zoning information subject to change and not warranted. Always confirm current requirements with local governing agencies.

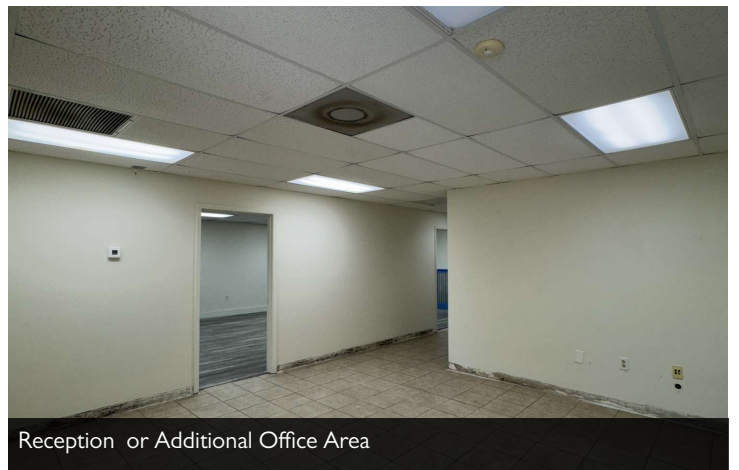
Lightle Beckner Robison, Inc.

321.722.0707 • teamlbr.com
70 W. Hibiscus Blvd.,
Melbourne, FL 32901

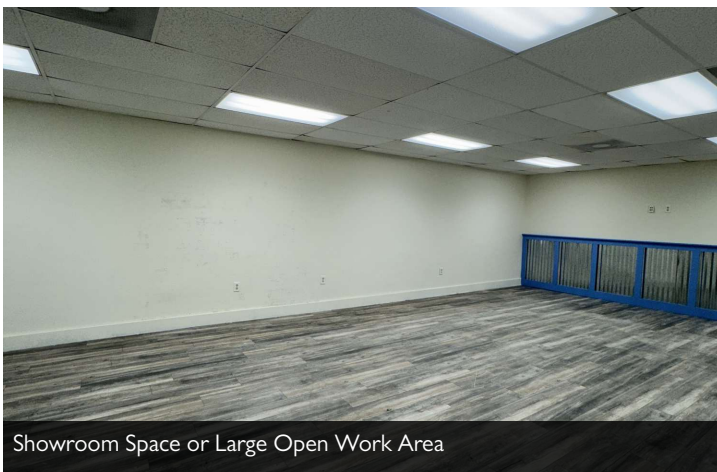
• 1720 Main St NE Palm Bay, FL 32905



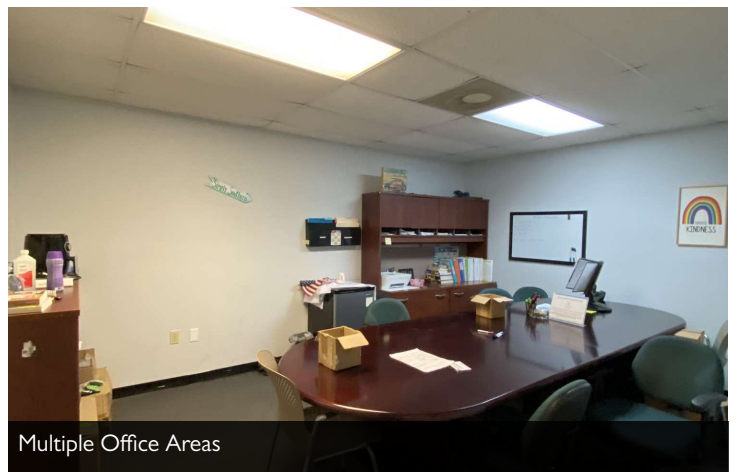
Break Area



Reception or Additional Office Area



Showroom Space or Large Open Work Area



Multiple Office Areas

BRIAN L. LIGHTLE, CCIM, SIOR, CRE

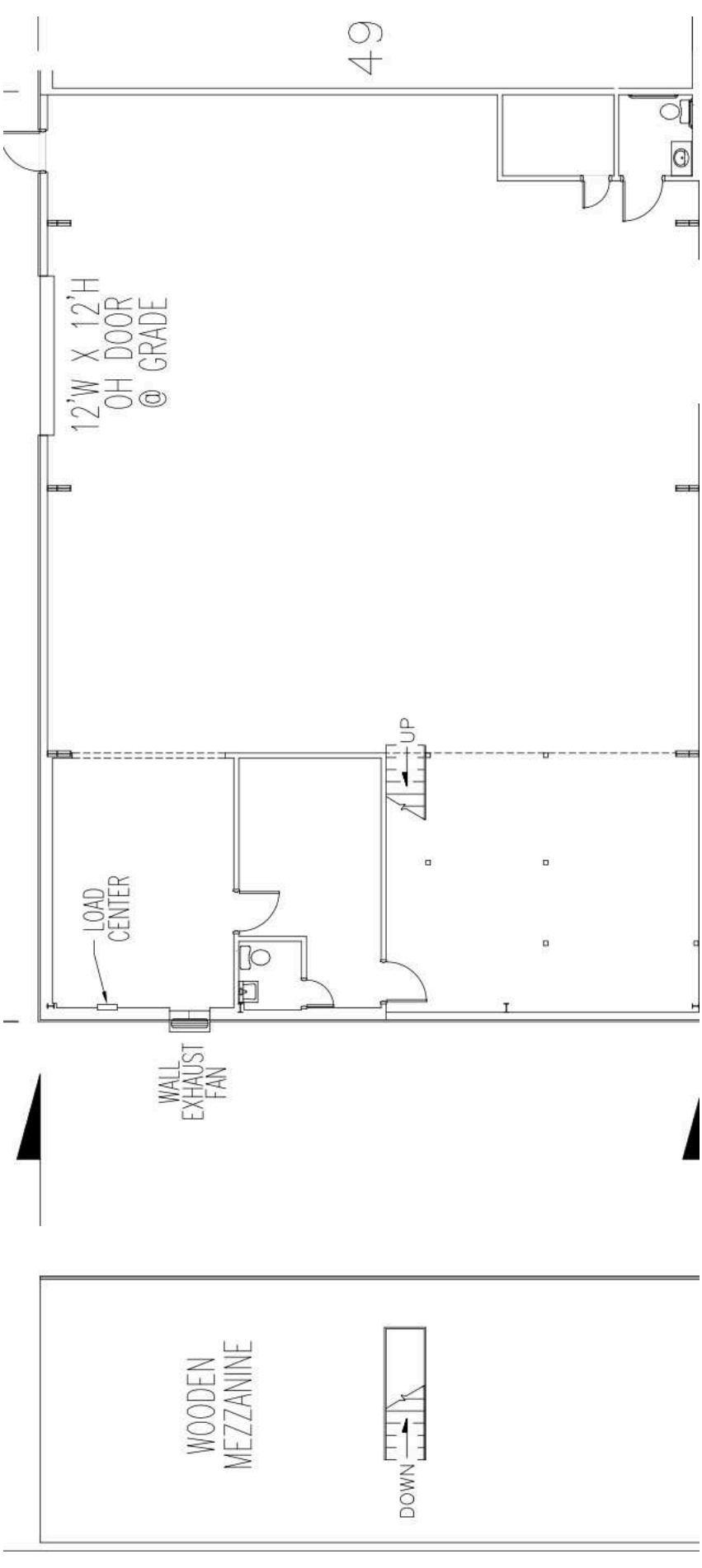
Founder | Broker Associate
321.863.3228
brian@teamlbr.com

Information contained herein has been obtained through sources deemed reliable but cannot be guaranteed as to its accuracy. A purchaser or lessee is expected to verify all information to his/her own satisfaction. Zoning information subject to change and not warranted. Always confirm current requirements with local governing agencies.

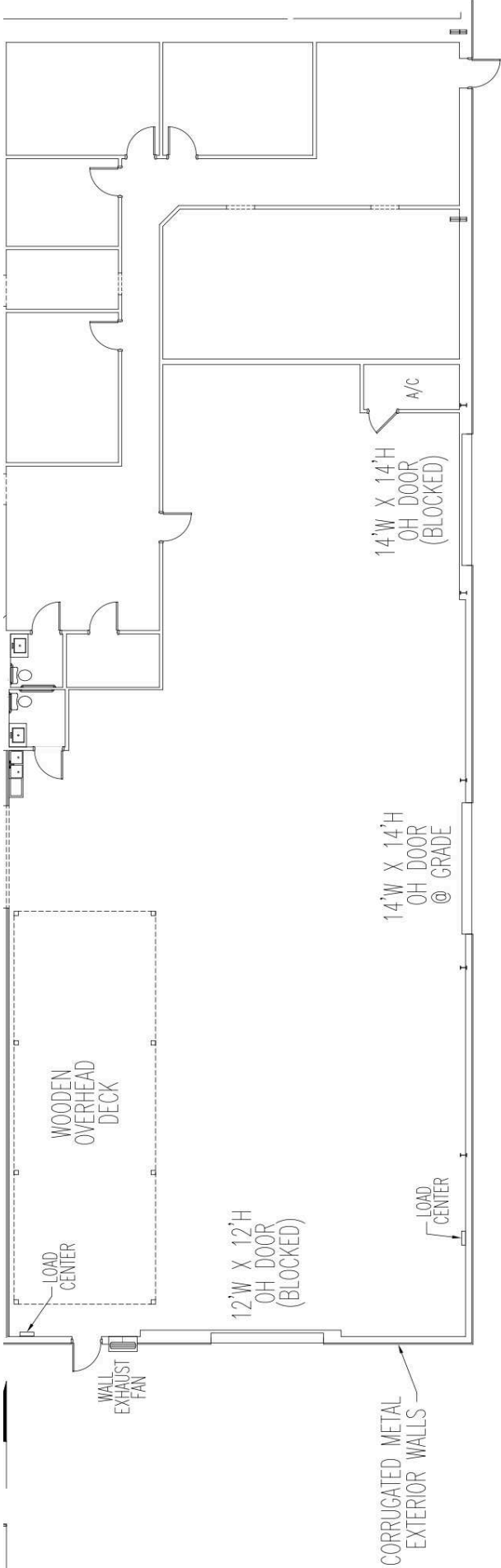
Lightle Beckner Robison, Inc.

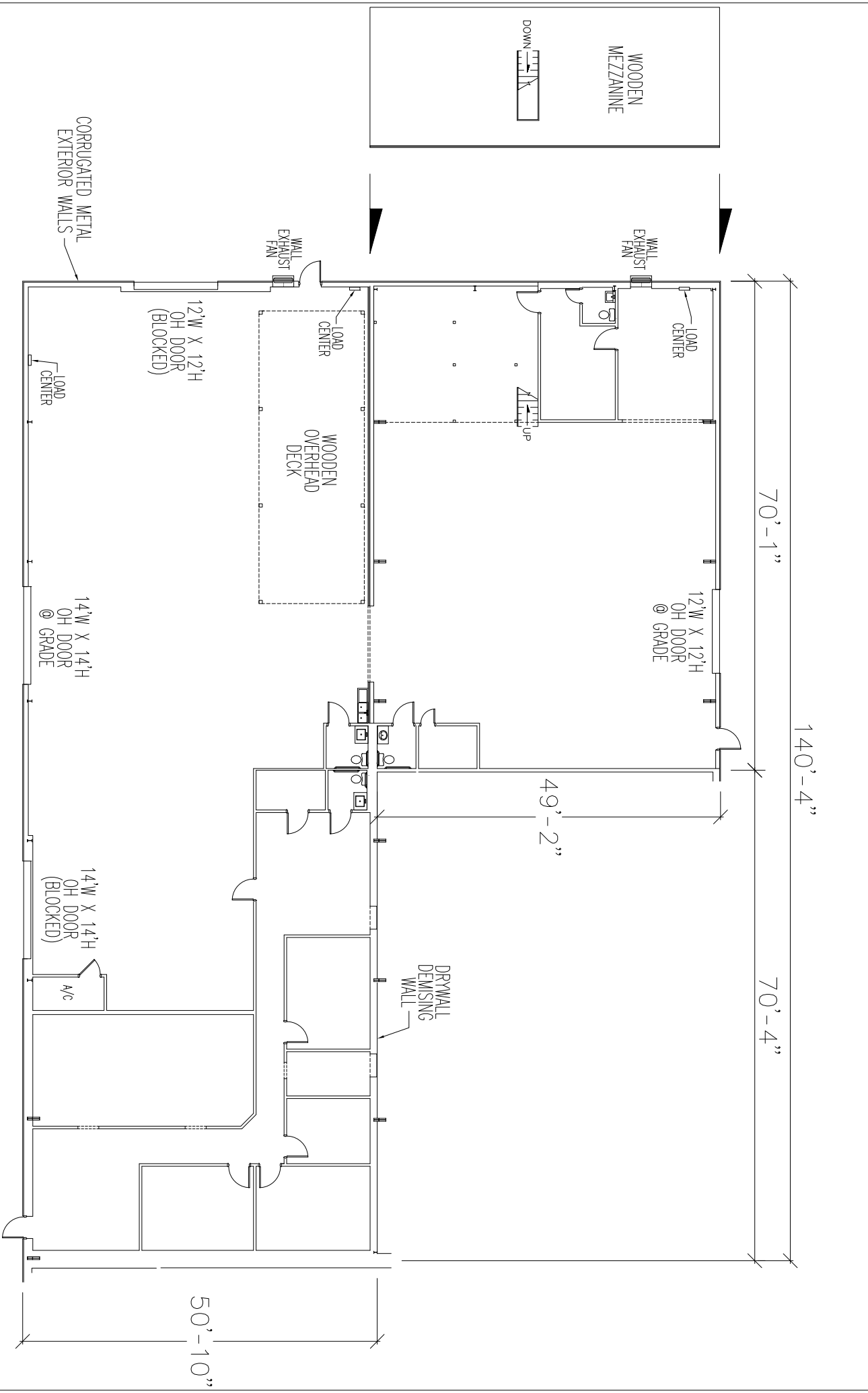
321.722.0707 • teamlbr.com
70 W. Hibiscus Blvd.,
Melbourne, FL 32901

Suite 6



Suite 4 Flex, Offices
and Warehouse





1720 MAIN ST. NE – SUITE 4 – FLOOR PLAN

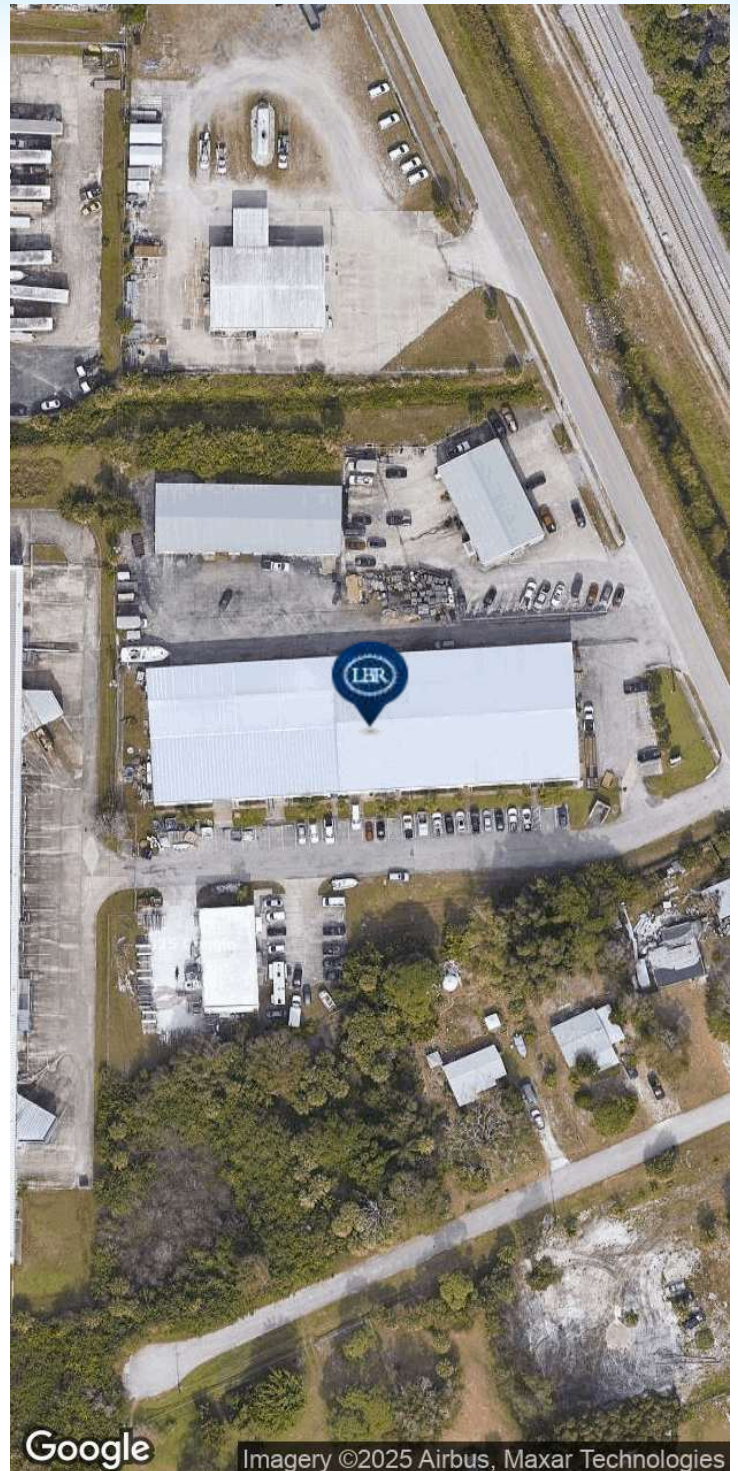
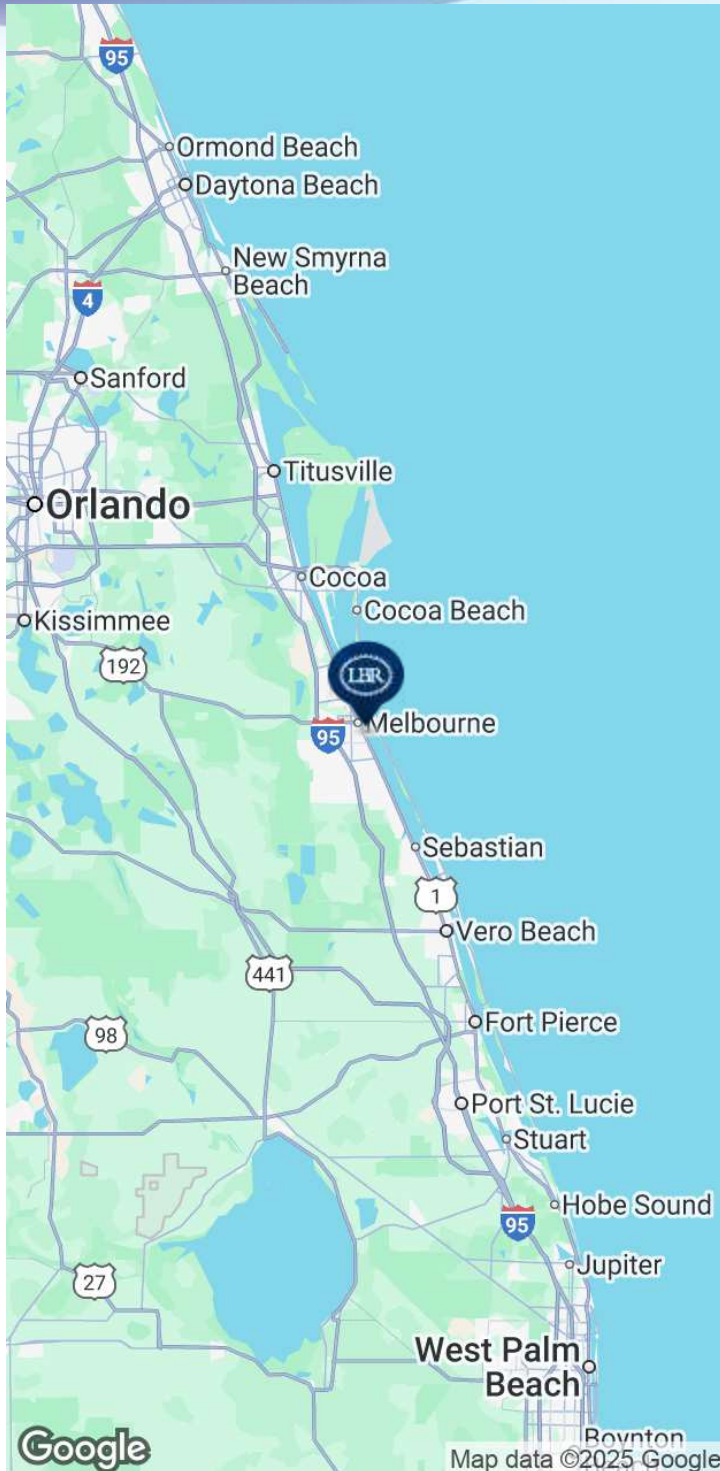


NOT TO SCALE

PREMISES IS DEEMED TO BE 10,546 RENTABLE SQUARE FEET INCLUDING 2,779 SQ. FT. OF OFFICE

LOCATION MAP

• 1720 Main St NE Palm Bay, FL 32905



BRIAN L. LIGHTLE, CCIM, SIOR, CRE

Founder | Broker Associate
321.863.3228
brian@teamlbr.com

Information contained herein has been obtained through sources deemed reliable but cannot be guaranteed as to its accuracy. A purchaser or lessee is expected to verify all information to his/her own satisfaction. Zoning information subject to change and not warranted. Always confirm current requirements with local governing agencies.

Lightle Beckner Robison, Inc.

321.722.0707 • teamlbr.com
70 W. Hibiscus Blvd.,
Melbourne, FL 32901