



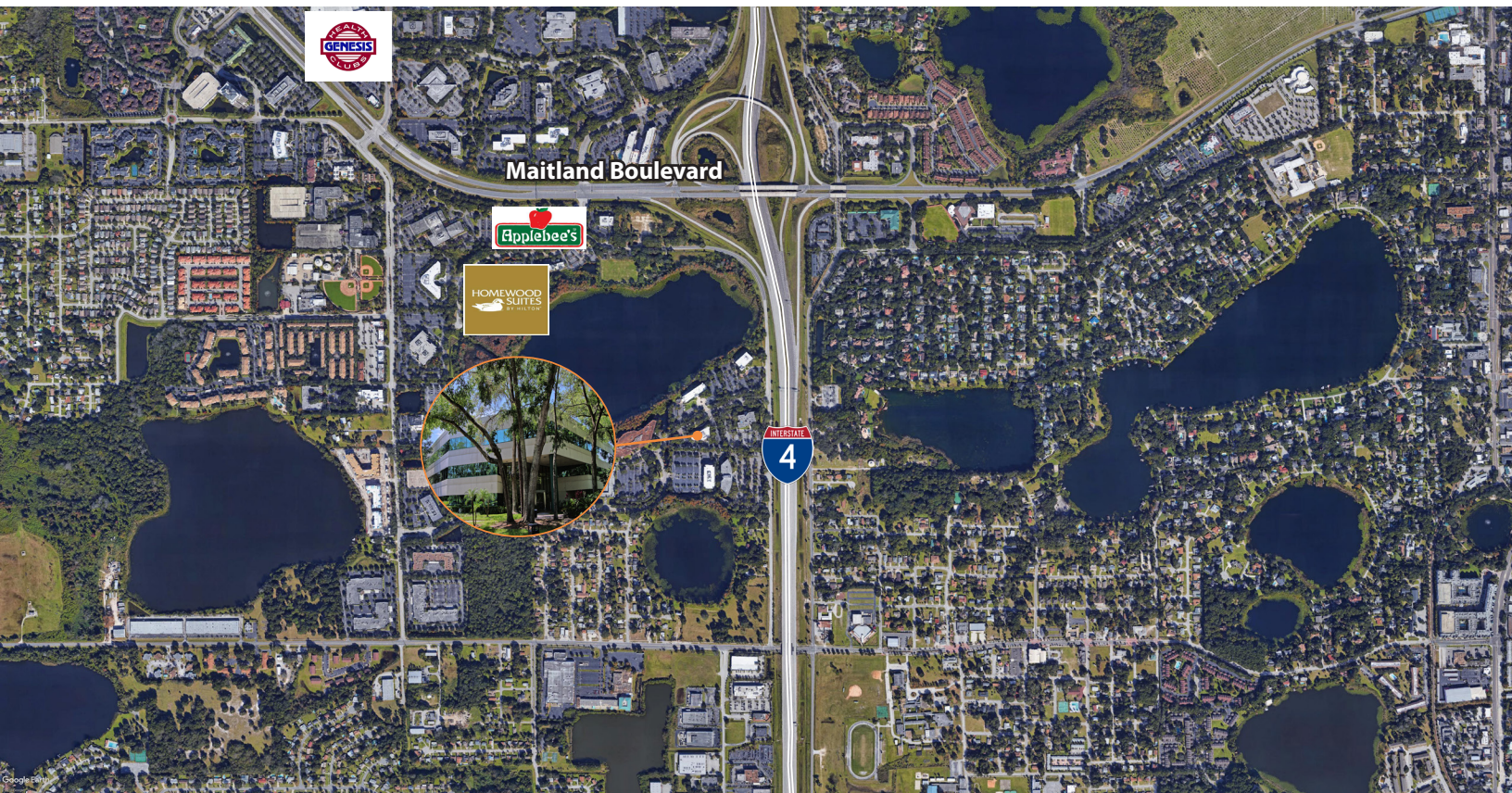
Property Highlights

- Park like setting with mature landscaping
- 1,188± sf - 6,174± sf available
- Convenient access to Interstate-4
- Minutes to Downtown Orlando
- First and Second floor restrooms newly renovated
- New corridor finishes
- Nearby amenities include the Genesis Health Club, hotels and numerous restaurants
- Abundant parking

Emily Zinaich, Senior Vice President
D 407 440 6641
C 407 230 8797
emily.zinaich@avisonyoung.com

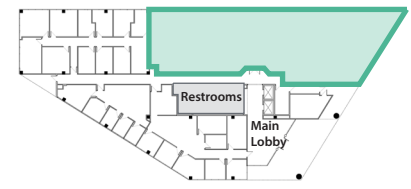
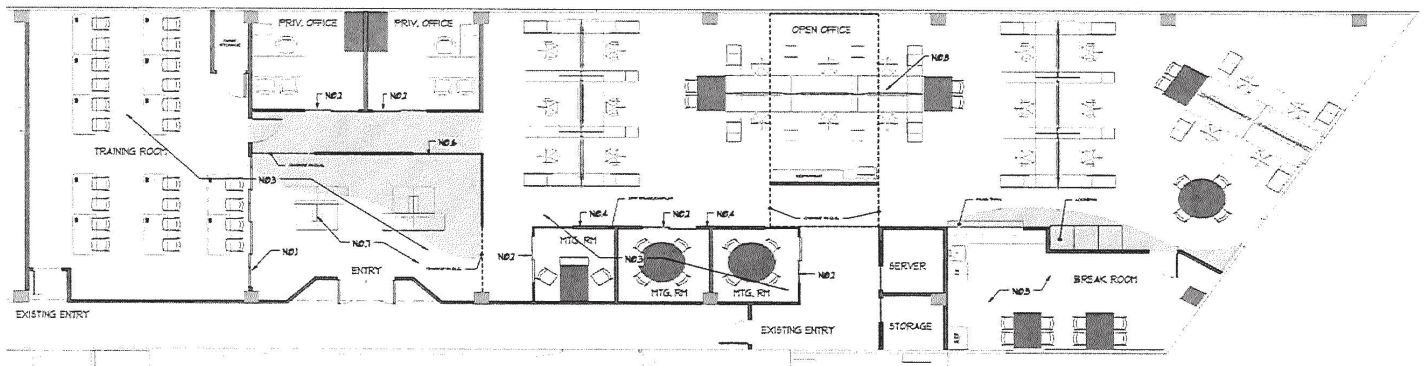
**AVISON
YOUNG**

For Lease
Lucien Green
2250 Lucien Way
Maitland, FL 32751



Emily Zinaich, Senior Vice President
D 407 440 6641
C 407 230 8797
emily.zinaich@avisonyoung.com

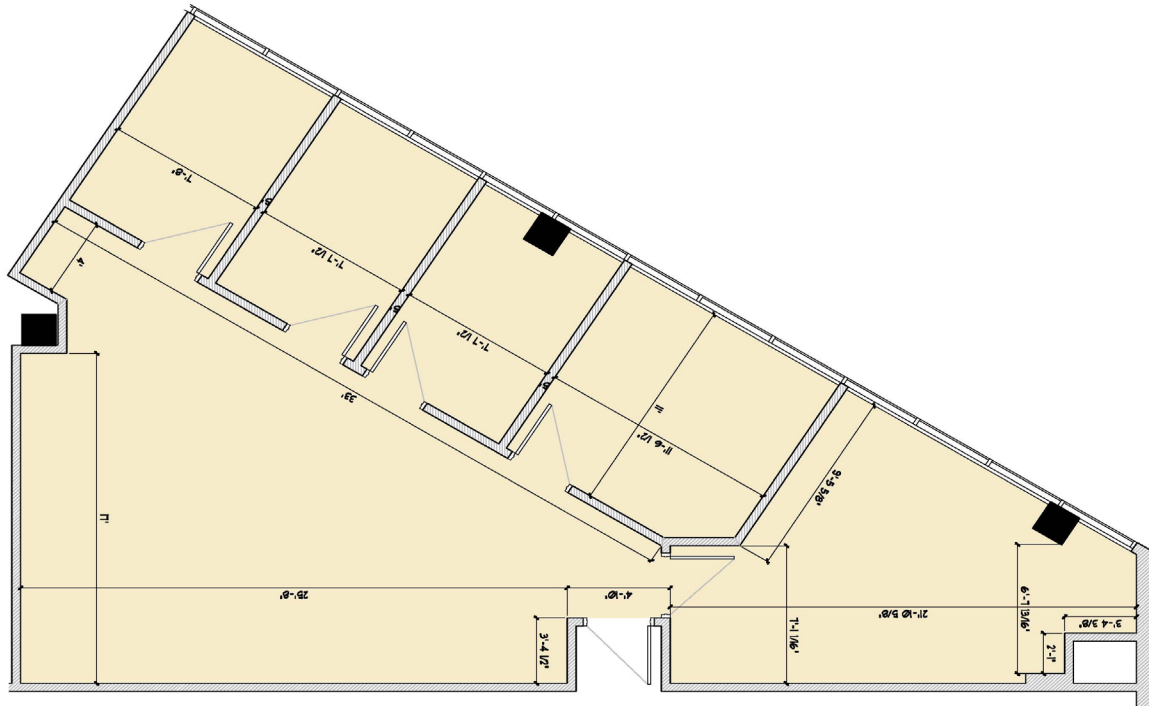
Suite 110 - 6,150± rsf



KEY PLAN

Emily Zinaich, Senior Vice President
D 407 440 6641
C 407 230 8797
emily.zinaich@avisonyoung.com

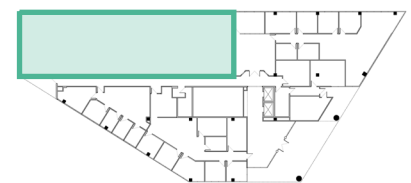
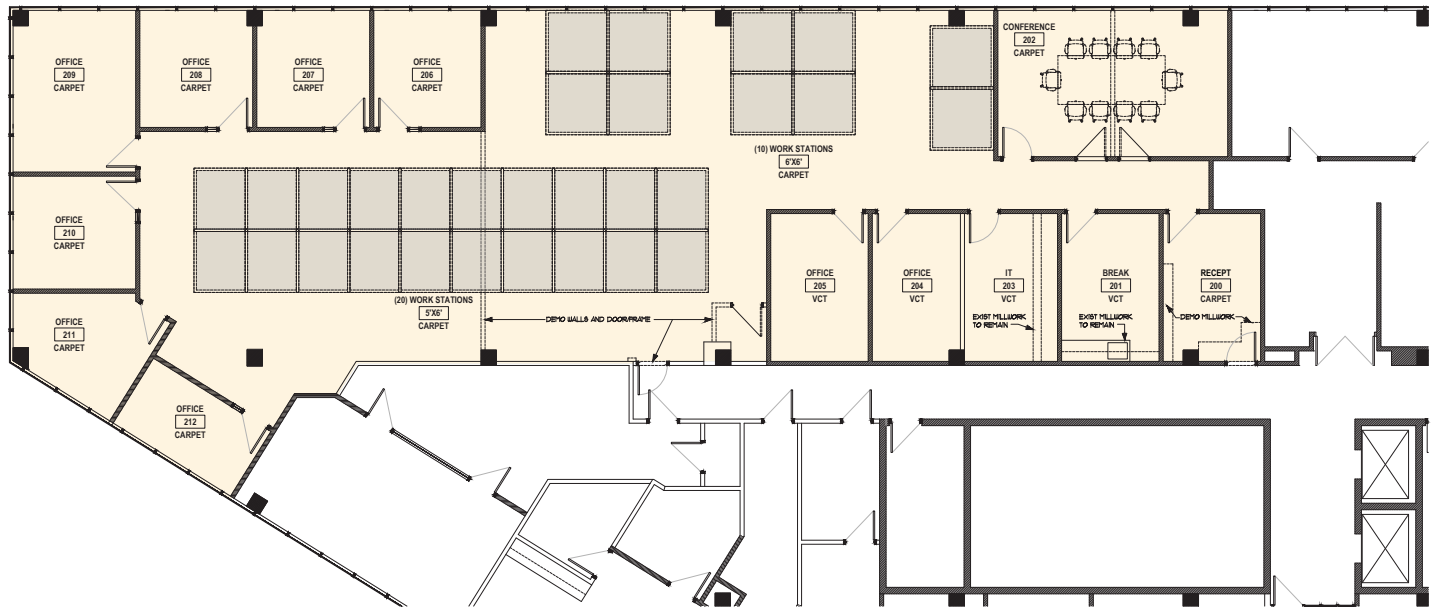
Suite 130 - 1,297± rsf



KEY PLAN

Emily Zinaich, Senior Vice President
D 407 440 6641
C 407 230 8797
emily.zinaich@avisonyoung.com

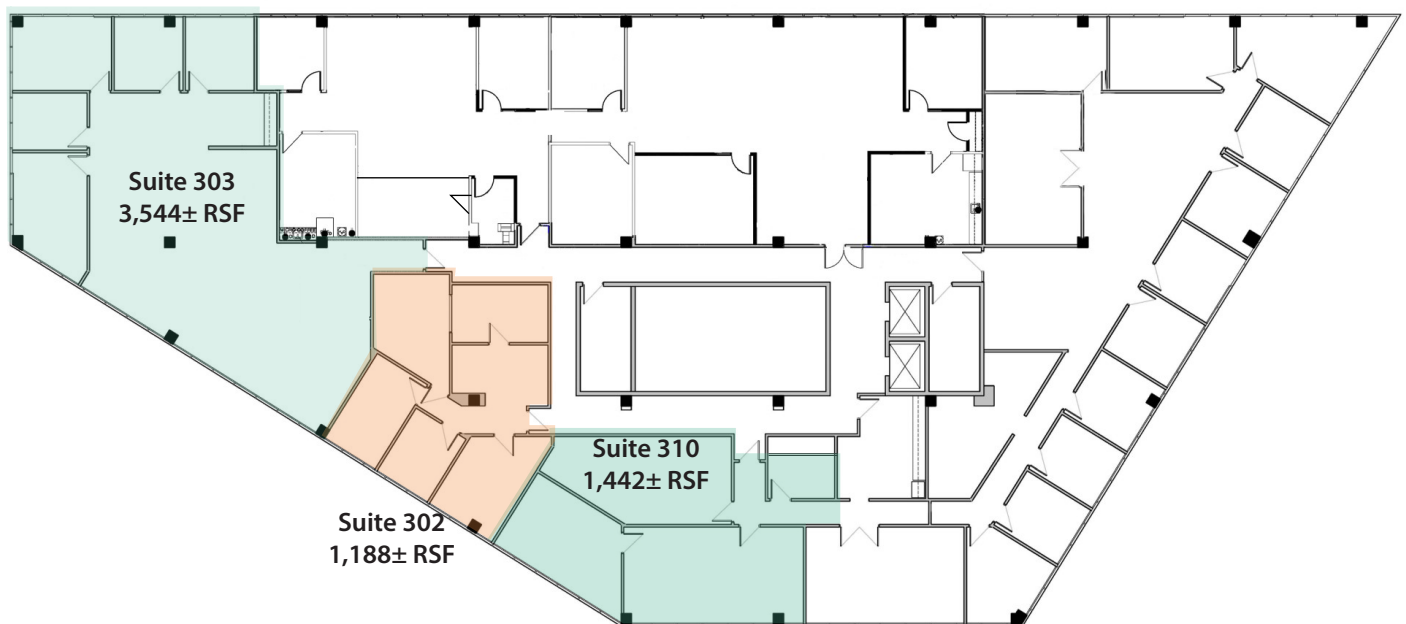
Suite 240 - 5,550± rsf



KEY PLAN

Emily Zinaich, Senior Vice President
D 407 440 6641
C 407 230 8797
emily.zinaich@avisonyoung.com

Third Floor Suites - Up to 6,174± rsf



Emily Zinaich, Senior Vice President
D 407 440 6641
C 407 230 8797
emily.zinaich@avisonyoung.com