

2 West Grand Avenue

Fox Lake, IL 60020

For Lease

MLS #11960277

RETAIL



RETAIL END UNIT 900 SF

\$1,493.25/MO.

\$14. PSF (NNN)

Retail Space Available Fox Lake Commons 900 SF end unit

Premium retail space in Fox Lake Commons at the signalized intersection of Route 12 and Grand Avenue. Ample lighted parking and Monument signage. High traffic counts with 10,250 vpd on Grand Avenue and 21,500 vpd on Route 12.

Unit 101: 900 SF end unit, open retail in front and one office, storage, and bath in rear. \$1,493.25 total monthly including NNN.

Join Key West Construction & Adjusters, West Marine, One Main Financial, Rosati's, Carlo's Mexican Grill, Blizz Nails, Hussle Barber Shop and Cloudy Lake Vape & Smoke.

Demographics	1 Mile	3 Miles	5 Miles
Total Population	3,841	29,949	78,807
Average HH Income	\$88,394	\$110,426	\$119,182

Specifications

Building Size:	19,829 SF
Year Built:	1986
HVAC System:	GFA/ Central Air
Sprinklers:	yes
Washrooms:	1
Ceiling Height:	10 ft
Parking:	Common / Lighted
Sewer/Water:	City
Zoning:	B3
Taxes:	\$2.54 PSF (2024)
CAM:	\$3.37 PSF
Utilities:	Tenant Responsibility
PIN #:	05-09-212-020

[CLICK HERE TO VIEW OUR WEBSITE](#)

No warranty or representation is made as to the accuracy of the foregoing information. Terms of sale or lease and availability are subject to change or withdrawal without notice. This document is for information purposes only. No offer of sub-agency is being made.



Broker Associate
Shari Haefner

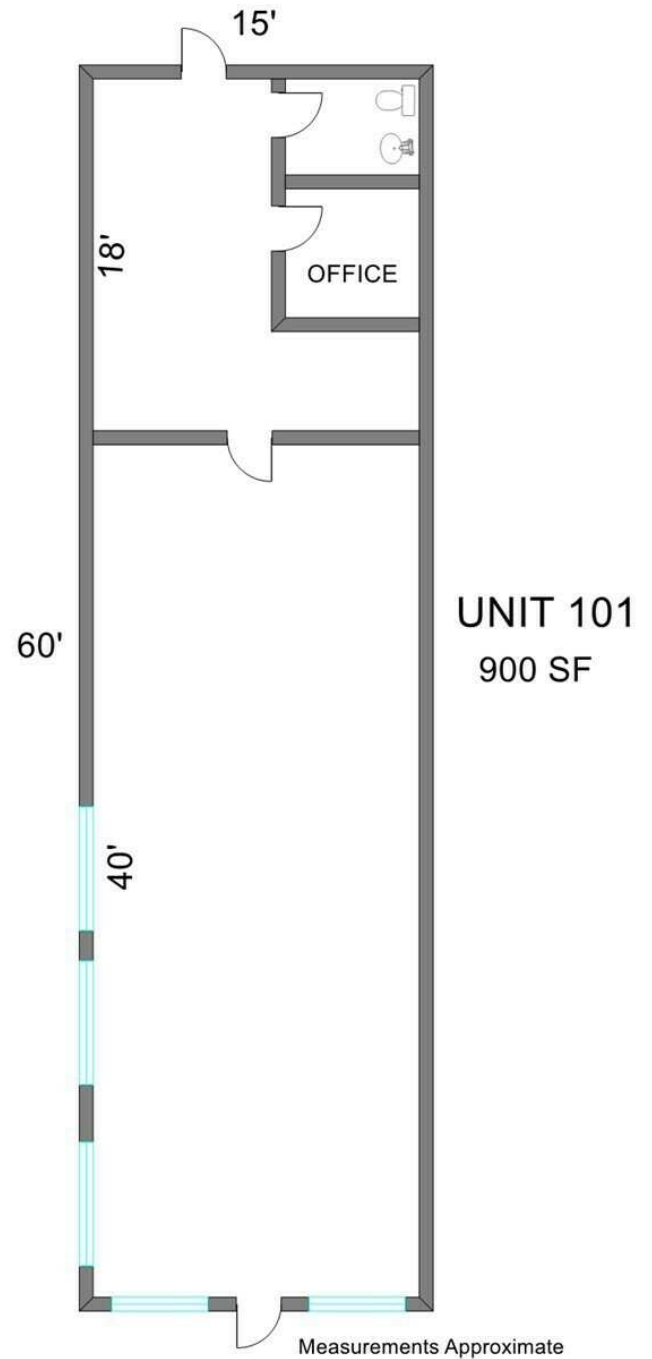
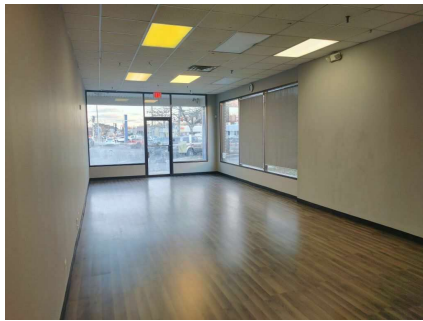
ShariH@premiercommercialrealty.com
O: 847.854.2300 x18 C: 312.671.3600

2 West Grand Avenue

Fox Lake, IL 60020

For Lease

RETAIL



[CLICK HERE TO VIEW OUR WEBSITE](#)

No warranty or representation is made as to the accuracy of the foregoing information. Terms of sale or lease and availability are subject to change or withdrawal without notice. This document is for information purposes only. No offer of sub-agency is being made.



Broker Associate
Shari Haefner

ShariH@premiercommercialrealty.com
O: 847.854.2300 x18 C: 312.671.3600