

# 7020 Huntley Rd Unit 8

Carpentersville, IL 60110

## For Lease

MLS #12446629



OFFICE/ RETAIL END UNIT 1,205 SF

\$1,406/MO. \$14. PSF(MG)

### LONGIN SQUARE CENTER 1,205 SF End Unit Office or Retail

Randall Road corridor office/retail space. Excellent location just off the busy corner of Huntley and Randall Road with over 10,000 vpd.

Monument signage available with great visibility.

**Unit 8:** 1,205 SF end unit with 3 private offices, open clerical/ reception and 1 bath. Ideal for office or retail use.

Demographics	1 Mile	3 Miles	5 Miles
Total Population	7,492	35,993	137,811
Average HH Income	\$161,871	\$155,318	\$129,196

### Specifications

Center Size:	11,982 SF
Year Built:	2005
HVAC System:	GFA/ Central Air
Electrical:	200 amp 3 phase
Sprinklers:	Yes
Washrooms:	1 ADA
Ceiling Height:	10 ft
Parking:	Common
Sewer/Water:	City
Zoning:	C-2-A
Utilities:	Tenant Responsibility
CAM & Taxes	Included
PIN #:	03-17-103-003

[CLICK HERE TO VIEW OUR WEBSITE](#)

No warranty or representation is made as to the accuracy of the foregoing information. Terms of sale or lease and availability are subject to change or withdrawal without notice. This document is for information purposes only. No offer of sub-agency is being made.



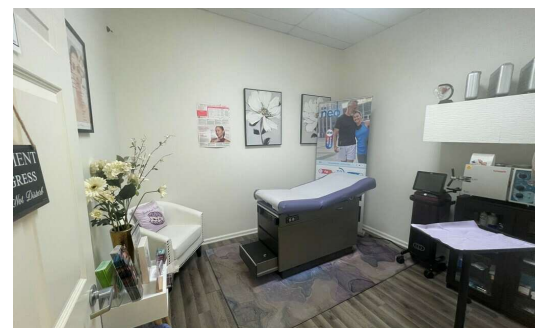
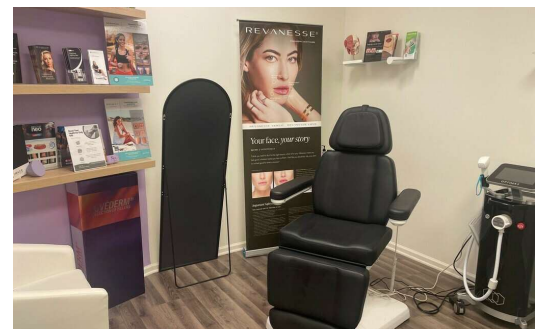
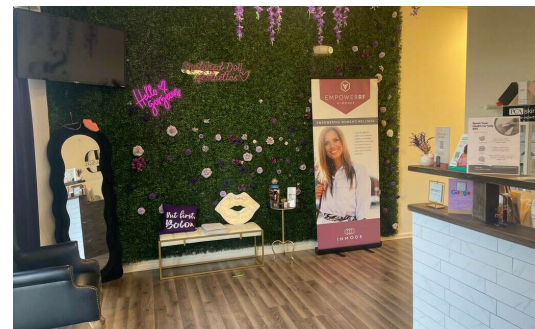
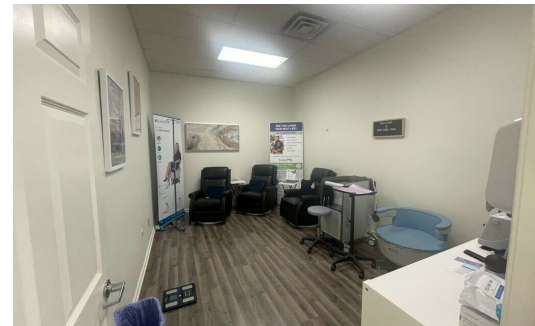
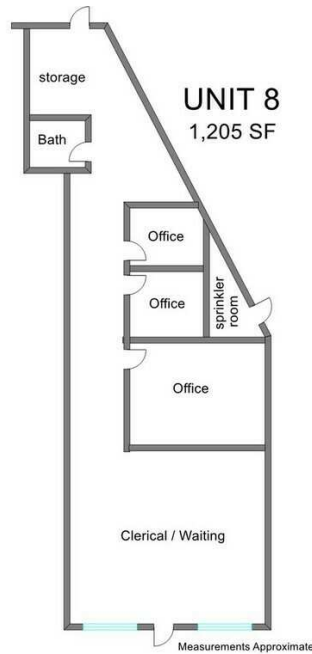
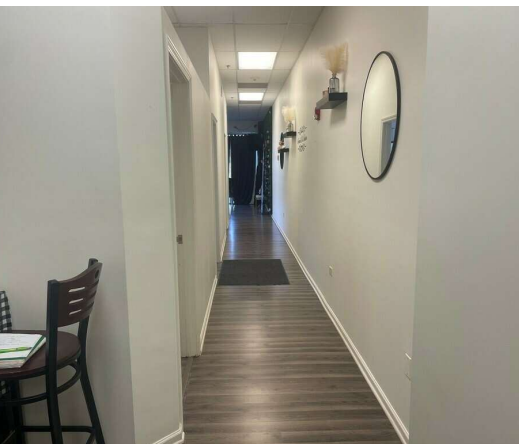
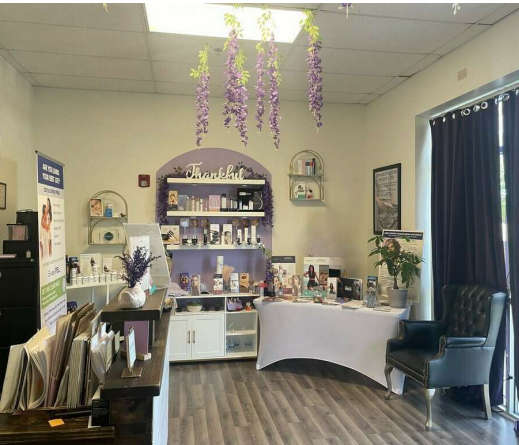
Senior Broker  
**Sharon Glasshof**  
SharonG@PremierCommercialRealty.com  
O: 847.854.2300 x14 C: 847.533.6974

President / Designated Managing Broker  
**Heather Schweitzer**  
HeatherS@PremierCommercialRealty.com  
O: 847.854.2300 x15 C: 815.236.9816

7020 Huntley Rd Unit 8  
Carpentersville, IL 60110

For Lease

OFFICE/ RETAIL



[CLICK HERE TO VIEW OUR WEBSITE](#)

No warranty or representation is made as to the accuracy of the foregoing information. Terms of sale or lease and availability are subject to change or withdrawal without notice. This document is for information purposes only. No offer of sub-agency is being made.



Senior Broker  
**Sharon Glasshof**  
SharonG@PremierCommercialRealty.com  
O: 847.854.2300 x14 C: 847.533.6974

President / Designated Managing Broker  
**Heather Schweitzer**  
HeatherS@PremierCommercialRealty.com  
O: 847.854.2300 x15 C: 815.236.9816

www.PremierCommercialRealty.com | 847.854.2300 | 9225 S. Route 31, Lake in the Hills, IL 60156