

# INDUSTRIAL WAREHOUSE FOR SALE

# 720 N 17-92



## 8,000 SF | CALL FOR PRICING

### PROPERTY INFORMATION

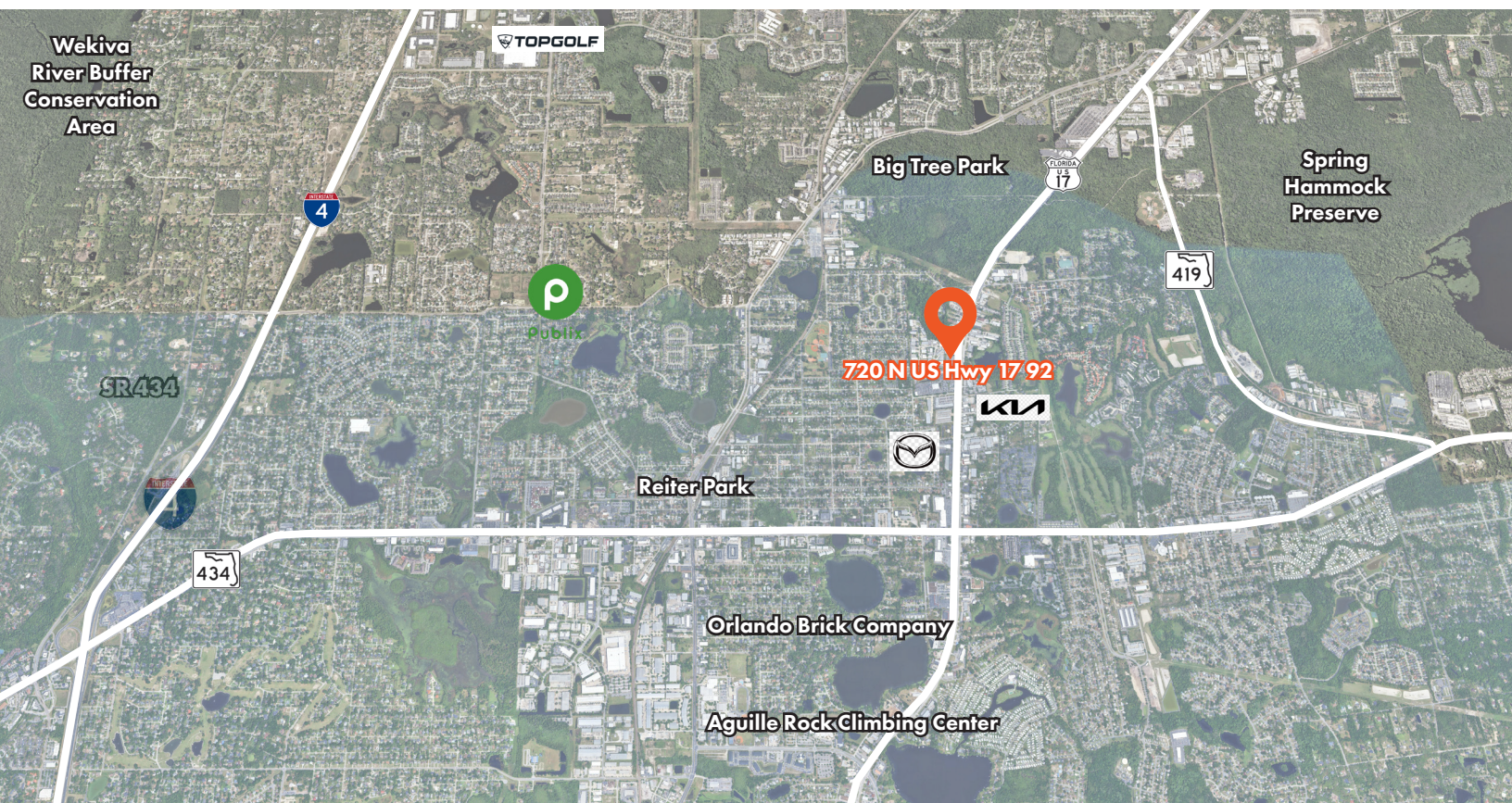
An 8,000 sq. ft. industrial/commercial warehouse situated on 0.87 acres, featuring 5,000 sq. ft. of covered overhang and a small laydown yard/excess parking. This property is ideal for contractors, marine or powersports service centers/dealerships, equipment rental businesses, or any other warehouse/commercial use requiring additional parking and storage space.

The location offers excellent access and high visibility with frontage on 17-92, benefiting from a high traffic count. Notable building features include a brand-new roof, two new AC units, onsite fuel capability, and a fully fenced perimeter with a security system.

### PROPERTY DETAILS

- **BUILDING SIZE:** 8,000 SF Industrial Warehouse/Shop + 5,000 SF Covered Canopy
- **LOT SIZE:** 0.87 Acres
- **OFFICE:** 1,200 SF Office/Showroom (2 offices, 2 restrooms, parts inventory and showroom)
- **DOORS:** 4 roll-up (10'x12' and 14'x10')
- **CLEAR HEIGHT:** 11'
- **OVERHANG HEIGHT:** 20' - 12'
- **ZONING:** 17-92 Commercial Warehouse





FOUNDRY  
COMMERCIAL

CHARLES ATTAWAY | 407.963.4064  
Charles.Attaway@foundrycommercial.com  
Licensed Real Estate Broker

JEROD FREELAND | 321.591.5404  
Jerod.Freeland@foundrycommercial.com  
Licensed Real Estate Broker

foundrycommercial.com