

EXECUTIVE SUMMARY

• 650 S Courtenay Pkwy Merritt Island, FL 32952



OFFERING SUMMARY

Available SF: 1,600 - 2,434 SF

Lease Rate: \$15.00 SF/yr (Gross)

Lot Size: 2.42 Acres

Year Built: 1984

Building Size: 17,752 SF

Zoning: BUI/BU2

PROPERTY OVERVIEW

First floor office spaces
Can be used for medical or office use
Private offices and restrooms
Lots of parking

LOCATION OVERVIEW

Great location just 1 mile south of SR-520 (Merritt Island Cswy)
Easy access

HAYDEN BROUILLETTE

Jr. Associate
321.722.0707 X23
hayden@teamlbr.com

ROB BECKNER, SIOR

Principal
321.722.0707 X11
rob@teamlbr.com

Lightle Beckner Robison, Inc.

321.722.0707 • teamlbr.com
70 W. Hibiscus Blvd.,
Melbourne, FL 32901

Information contained herein has been obtained through sources deemed reliable but cannot be guaranteed as to its accuracy. A purchaser or lessee is expected to verify all information to his/her own satisfaction. Zoning information subject to change and not warranted. Always confirm current requirements with local governing agencies.

AVAILABLE SPACES

• 650 S Courtenay Pkwy Merritt Island, FL 32952

Lease Rate: \$15.00 SF/YR (GROSS)

Total Space 1,600 - 2,434 SF

Lease Type: Gross

Lease Term:

SPACE	LEASE RATE	LEASE TYPE	SIZE (SF)	TERM
I00	\$15.00 SF/YR	Gross	1,600 SF	Negotiable
I02	\$15.00 SF/YR	Gross	2,434 SF	Negotiable

HAYDEN BROUILLETTE

Jr. Associate
321.722.0707 X23
hayden@teamlbr.com

ROB BECKNER, SIOR

Principal
321.722.0707 X11
rob@teamlbr.com

Lightle Beckner Robison, Inc.

321.722.0707 • teamlbr.com
70 W. Hibiscus Blvd.,
Melbourne, FL 32901

Information contained herein has been obtained through sources deemed reliable but cannot be guaranteed as to its accuracy. A purchaser or lessee is expected to verify all information to his/her own satisfaction. Zoning information subject to change and not warranted. Always confirm current requirements with local governing agencies.

INTERIOR - I02

• 650 S Courtenay Pkwy Merritt Island, FL 32952



HAYDEN BROUILLETTE

Jr. Associate
321.722.0707 X23
hayden@teamlbr.com

ROB BECKNER, SIOR

Principal
321.722.0707 X11
rob@teamlbr.com

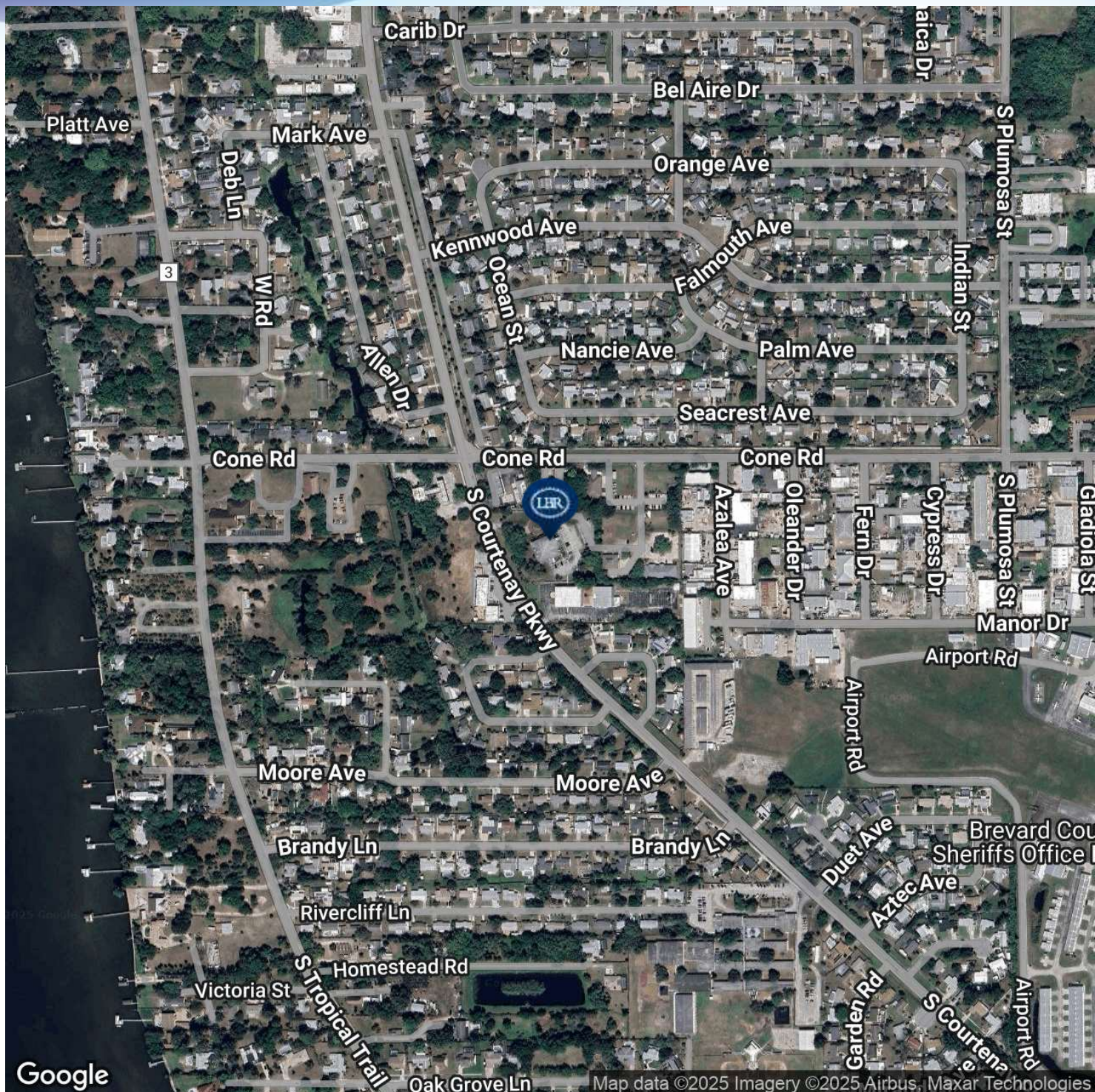
Lightle Beckner Robison, Inc.

321.722.0707 • teamlbr.com
70 W. Hibiscus Blvd.,
Melbourne, FL 32901

Information contained herein has been obtained through sources deemed reliable but cannot be guaranteed as to its accuracy. A purchaser or lessee is expected to verify all information to his/her own satisfaction. Zoning information subject to change and not warranted. Always confirm current requirements with local governing agencies.

LOCATION MAP

• 650 S Courtenay Pkwy Merritt Island, FL 32952



HAYDEN BROUILLETTE

Jr. Associate
321.722.0707 X23
hayden@teamlbr.com

ROB BECKNER, SIOR

Principal
321.722.0707 X11
rob@teamlbr.com

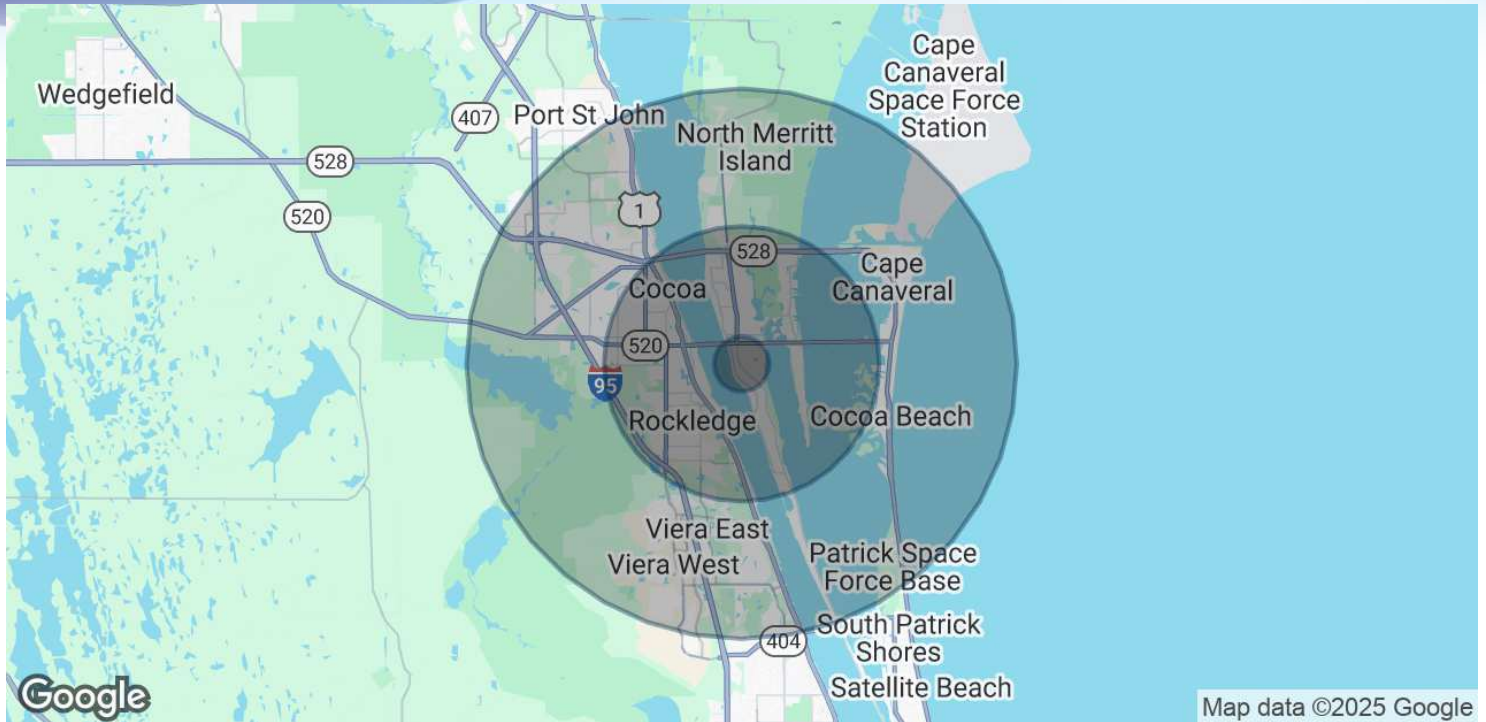
Lightle Beckner Robison, Inc.

321.722.0707 • teamlbr.com
70 W. Hibiscus Blvd.,
Melbourne, FL 32901

Information contained herein has been obtained through sources deemed reliable but cannot be guaranteed as to its accuracy. A purchaser or lessee is expected to verify all information to his/her own satisfaction. Zoning information subject to change and not warranted. Always confirm current requirements with local governing agencies.

DEMOGRAPHICS MAP & REPORT

• 650 S Courtenay Pkwy Merritt Island, FL 32952



POPULATION

	1 MILE	5 MILES	10 MILES
Total Population	3,833	92,292	186,489
Average Age	46.6	45.8	48.0
Average Age (Male)	49.4	44.1	46.9
Average Age (Female)	43.0	46.8	48.8

HOUSEHOLDS & INCOME

	1 MILE	5 MILES	10 MILES
Total Households	2,120	45,255	95,331
# of Persons per HH	1.8	2.0	2.0
Average HH Income	\$50,957	\$67,744	\$70,587
Average House Value	\$255,995	\$240,958	\$272,450

2020 American Community Survey (ACS)

HAYDEN BROUILLETTE

Jr. Associate
321.722.0707 X23
hayden@teamlbr.com

ROB BECKNER, SIOR

Principal
321.722.0707 X11
rob@teamlbr.com

Lightle Beckner Robison, Inc.

321.722.0707 • teamlbr.com
70 W. Hibiscus Blvd.,
Melbourne, FL 32901

Information contained herein has been obtained through sources deemed reliable but cannot be guaranteed as to its accuracy. A purchaser or lessee is expected to verify all information to his/her own satisfaction. Zoning information subject to change and not warranted. Always confirm current requirements with local governing agencies.