

# For Lease

# 400 TownPark

400 Colonial Center Parkway | Lake Mary, FL 32746

Up to 97,423± sf available

**AVISON  
YOUNG**

**Greg Morrison, CCIM, SIOR**

Principal

407.440.6640

[greg.morrison@avisonyoung.com](mailto:greg.morrison@avisonyoung.com)

**Jordan Bohannon**

Senior Vice President

407.219.3502

[jordan.bohannon@avisonyoung.com](mailto:jordan.bohannon@avisonyoung.com)

  
**PIEDMONT**  
REALTY TRUST





## Introduction

400 TownPark is a five-story Class A office building located at 400 Colonial Center Parkway in Lake Mary, Florida. It is part of the award winning Colonial TownPark development, which is Orlando's premier mixed-use corporate park, featuring quality retail, restaurants, hotels and apartments, all within walking distance. **400 TownPark is a Southeastern Region 2024 BOMA TOBY Award winner.** Whether you're a local firm or a large corporation, 400 TownPark offers outstanding office space options.

### PROPERTY HIGHLIGHTS

IMMEDIATE ACCESS TO I-4, S.R. 417,  
AND NEW S.R. 429 CONNECTOR

WALKABLE TO QUALITY RESTAURANTS,  
RETAIL, HOTELS AND APARTMENTS

FITNESS CENTER WITH SEPARATE  
SHOWER AND LOCKER FACILITIES

SUSTAINABILITY AND WELLNESS  
CERTIFICATIONS

MONUMENT SIGNAGE

4.5/1,000 SF PARKING RATIO AND  
EV CHARGING STATIONS

DUAL FEED POWER FROM  
SEPARATE SUBSTATIONS

STATE-OF-THE-ART FIBER OPTICS





# Colonial TownPark Retail





# Photos



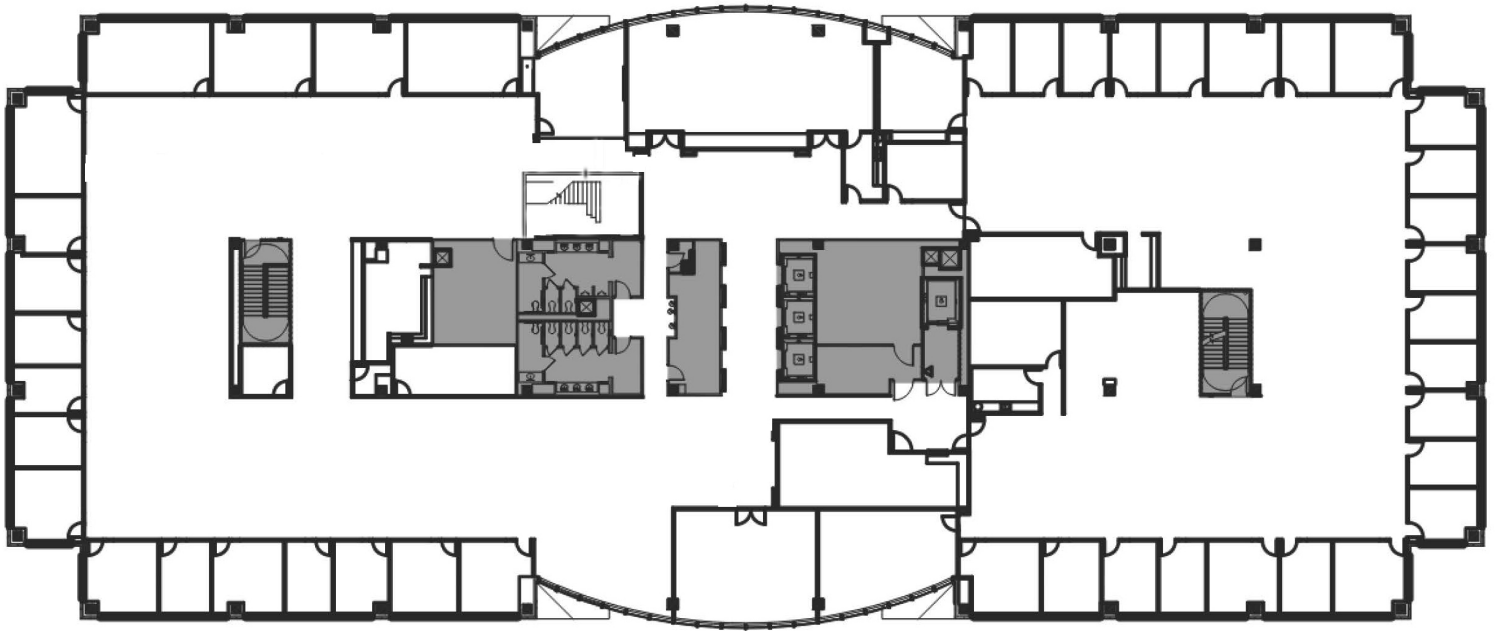
**AVISON  
YOUNG**

**Greg Morrison, CCIM, SIOR**  
Principal  
407.440.6640  
[greg.morrison@avisonyoung.com](mailto:greg.morrison@avisonyoung.com)

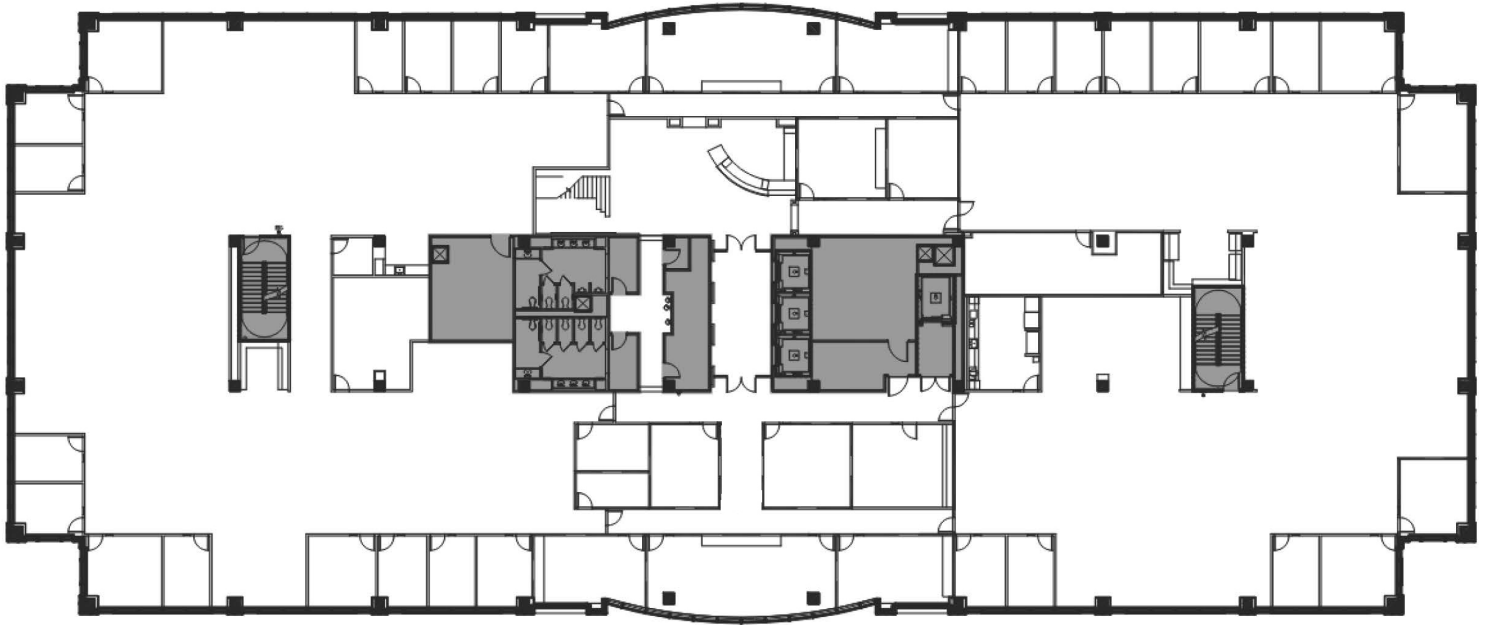
**Jordan Bohannon**  
Senior Vice President  
407.219.3502  
[jordan.bohannon@avisonyoung.com](mailto:jordan.bohannon@avisonyoung.com)

  
**PIEDMONT**  
REALTY TRUST



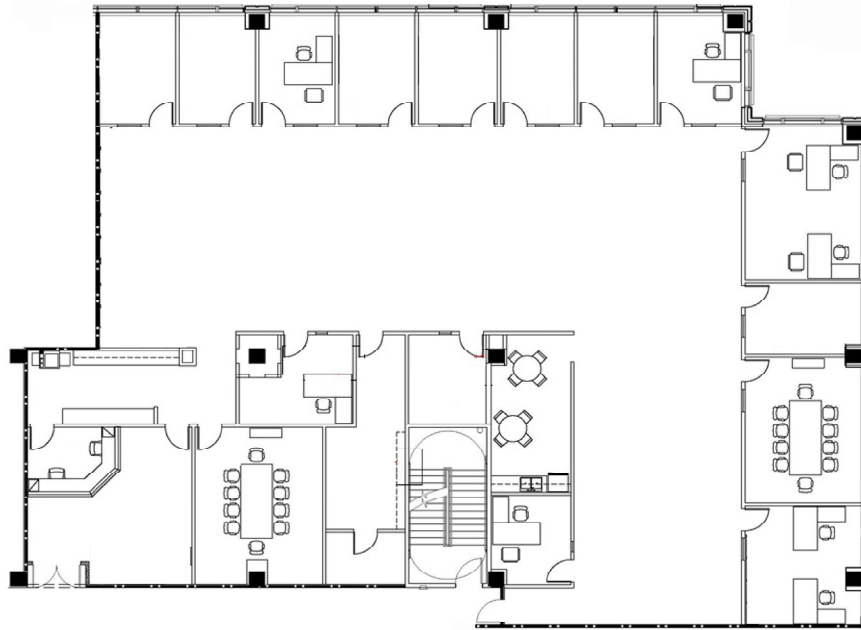








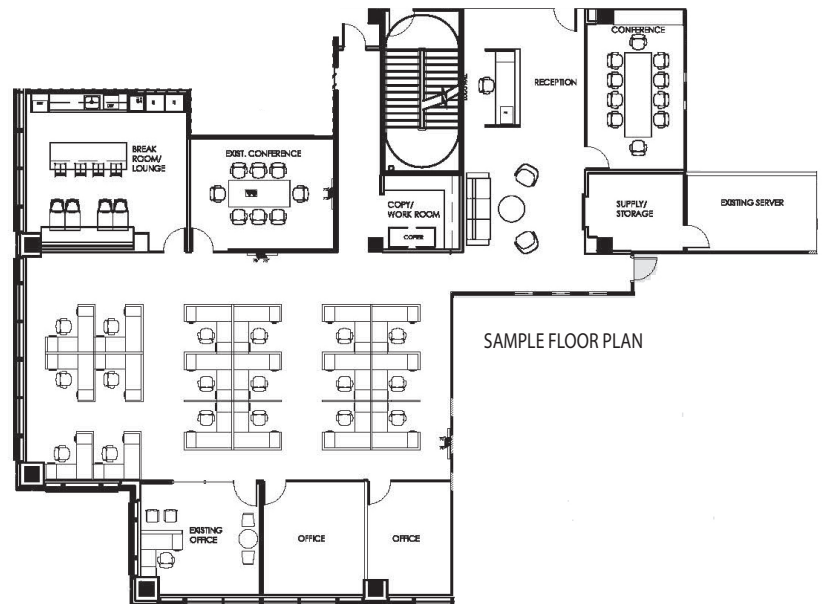
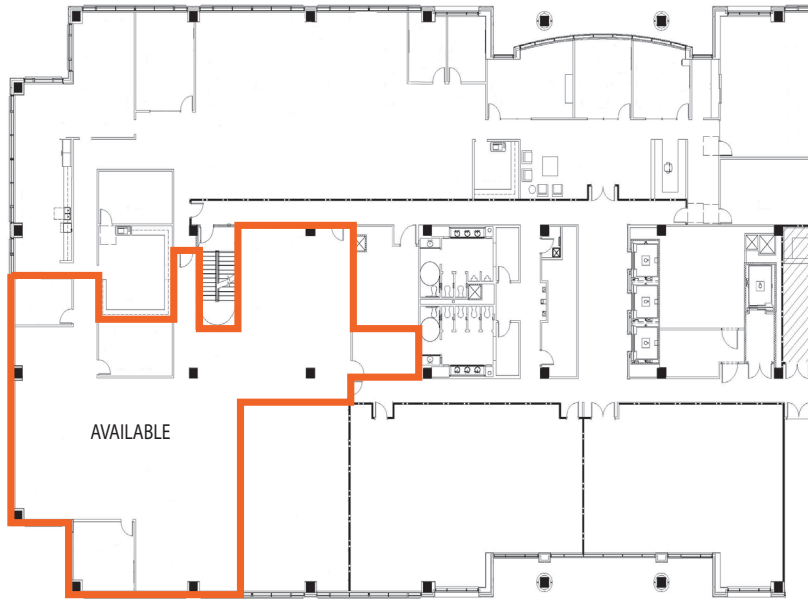
**SUITE 290 - 8,927± SF**  
**AVAILABLE 02/01/26**





**SUITE 230 - 5,195± SF**  
**AVAILABLE 10/01/25**

CURRENT LAYOUT



SAMPLE FLOOR PLAN



**SUITE 140 - 4,019± SF**  
**AVAILABLE 06/01/26**

