



### PROPERTY DESCRIPTION

This is a well maintained multi-tenant Professional/Office Building, located on Apollo Blvd., just across from the Melbourne International Airport, MLB.

There is currently one (1), 1.2K sf suite available. Build-out varies by suite.

### LOCATION DESCRIPTION

The Space Coast offers the right operating climate for business by combining low operating costs, aggressive and targeted incentives, and a coveted workforce. It is where quality of life soars among a strong diversified economy.

- Most highly concentrated high-tech economy in Florida - Milken Institute, 2019
- Second highest performing large city in the U.S. - Milken Institute 2021
- Third best wage growth in the U.S. - Milken Institute, 2021
- Top Business Location of Large Workforce States

### OFFERING SUMMARY

Lease Rate:	\$18.00 SF/yr (MG)
Available SF:	1,200 SF
Building Size:	21,114 SF

DEMOGRAPHICS	0.5 MILES	1 MILE	1.5 MILES
Total Households	406	1,113	3,247
Total Population	1,168	2,661	6,503
Average HH Income	\$64,795	\$53,209	\$49,281

### ROB BECKNER, SIOR

Principal  
321.722.0707 x11  
Rob@TeamLBR.com

### HAYDEN BROUILLETTE

Jr. Associate  
321.722.0707 x23  
Hayden@teamlbr.com



Lease Spaces

Apollo Professional Center  
For Lease

LEASE INFORMATION

Lease Type:	MG	Lease Term:	Negotiable
Total Space:	1,200 SF	Lease Rate:	\$18.00 SF/yr

AVAILABLE SPACES

SUITE	TENANT	SIZE (SF)	LEASE TYPE	LEASE RATE	DESCRIPTION
Suite 207	Available	1,200 SF	Modified Gross	\$18.00 SF/yr	Available for Sublease

ROB BECKNER, SIOR

Principal  
321.722.0707 x11  
Rob@TeamLBR.com

HAYDEN BROUILLETTE

Jr. Associate  
321.722.0707 x23  
Hayden@teamlbr.com



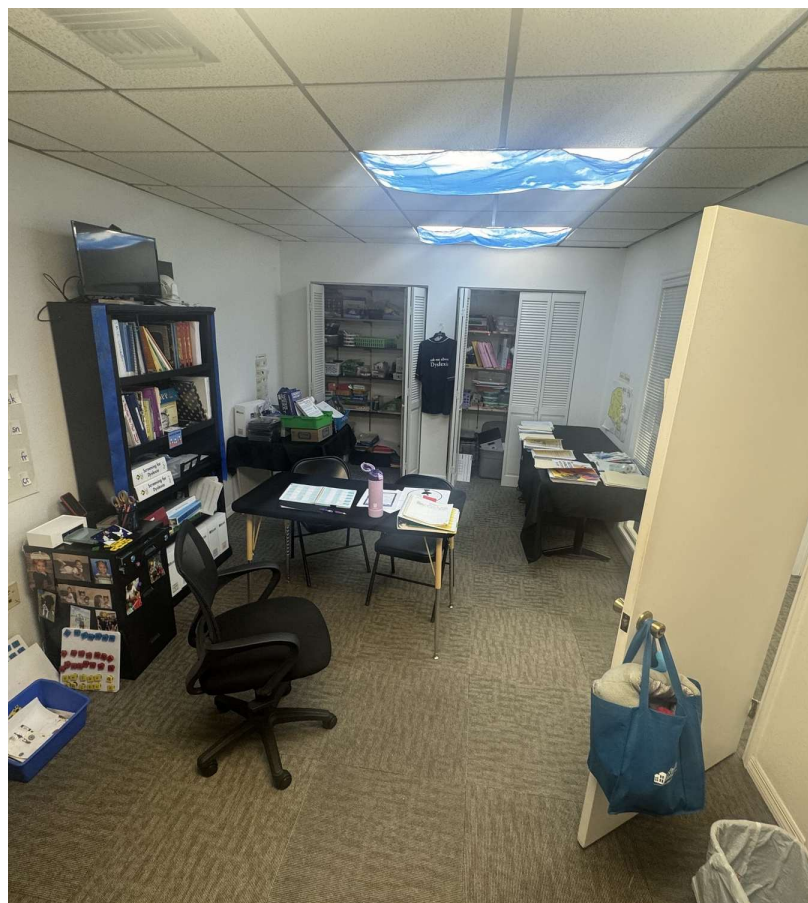
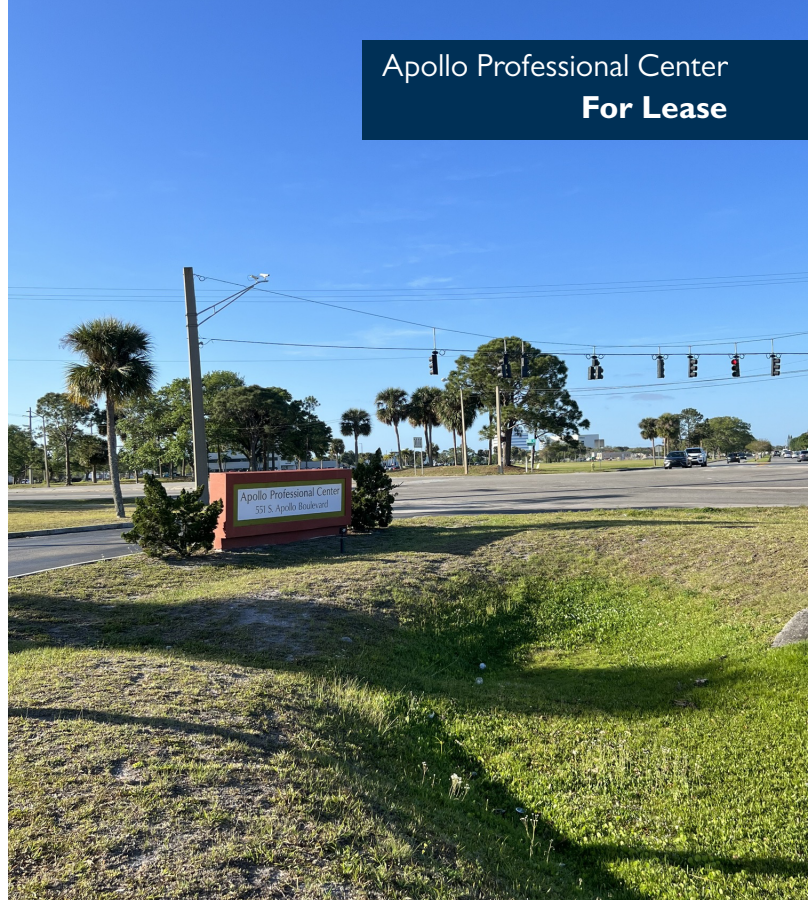
Information contained herein has been obtained through sources deemed reliable but cannot be guaranteed as to its accuracy. A purchaser or lessee is expected to verify all information to his/her own satisfaction. Zoning information subject to change and not warranted. Always confirm current requirements with local governing agencies.



## Additional Photos



## Apollo Professional Center For Lease



**ROB BECKNER, SIOR**

Principal  
321.722.0707 x11  
Rob@TeamLBR.com

**HAYDEN BROUILLETTE**

Jr. Associate  
321.722.0707 x23  
Hayden@teamlbr.com

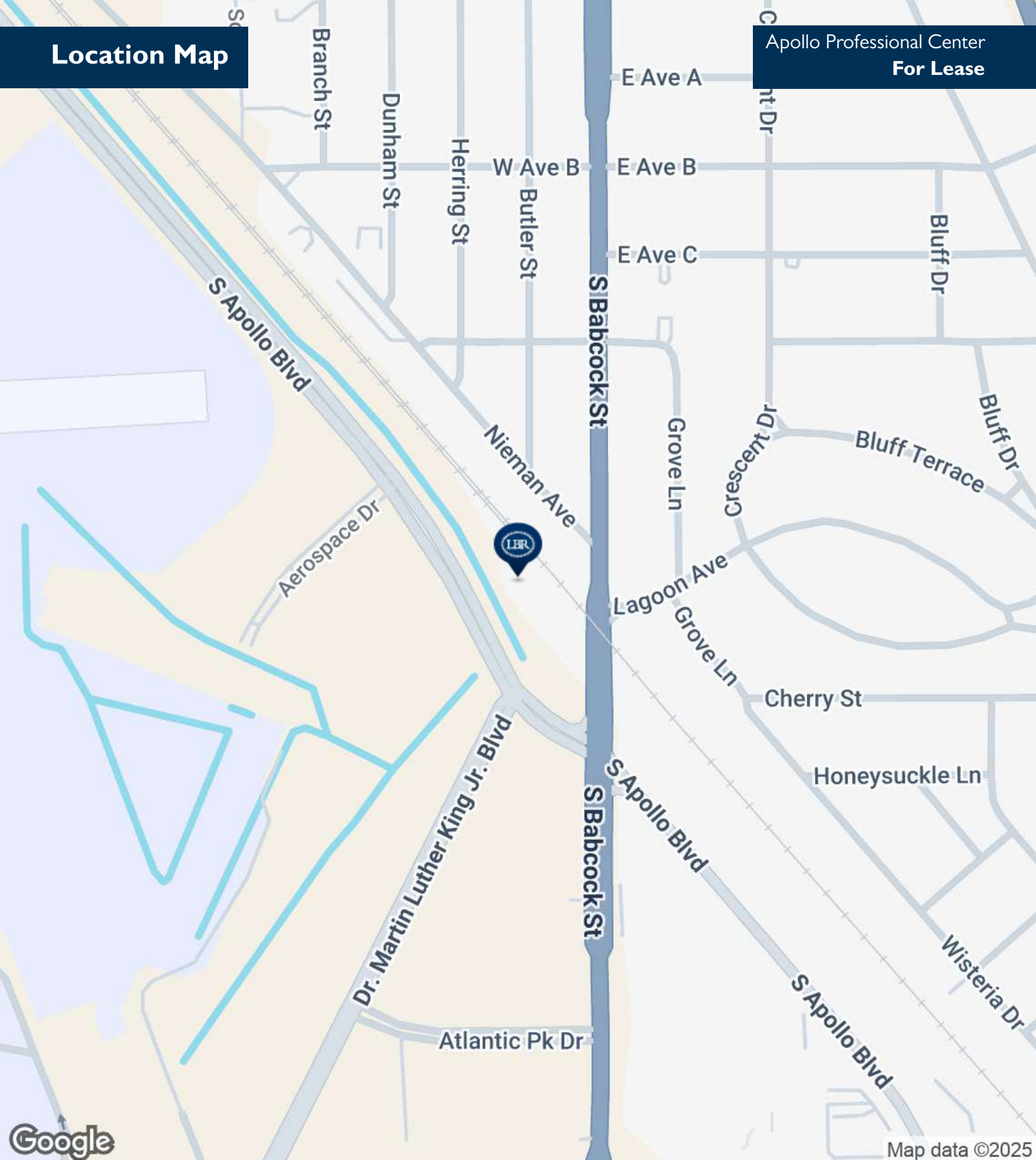


Information contained herein has been obtained through sources deemed reliable but cannot be guaranteed as to its accuracy. A purchaser or lessee is expected to verify all information to his/her own satisfaction. Zoning information subject to change and not warranted. Always confirm current requirements with local governing agencies.



## Location Map

Apollo Professional Center  
For Lease



ROB BECKNER, SIOR

Principal  
321.722.0707 x11  
Rob@TeamLBR.com

HAYDEN BROUILLETTE

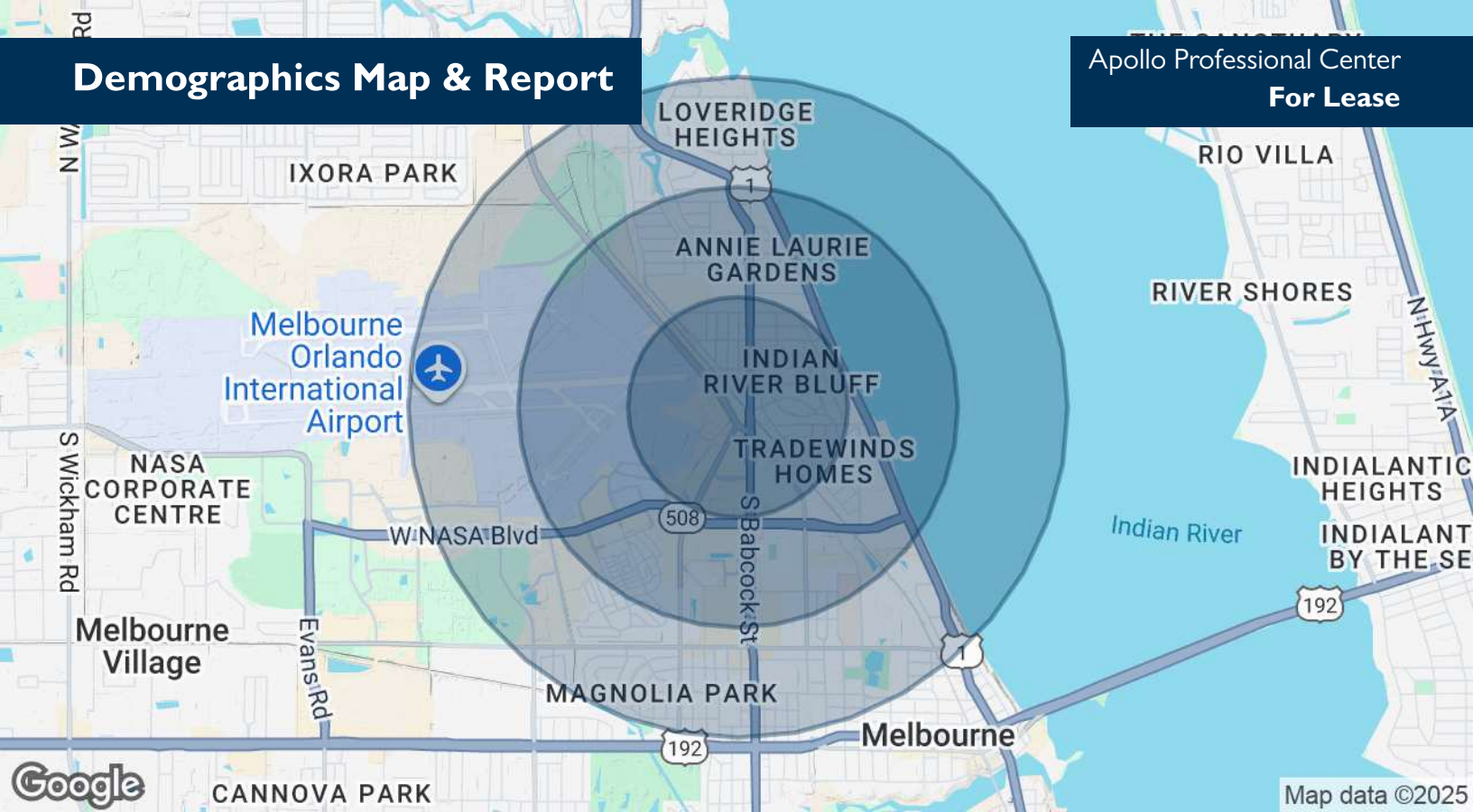
Jr. Associate  
321.722.0707 x23  
Hayden@teamlbr.com



Information contained herein has been obtained through sources deemed reliable but cannot be guaranteed as to its accuracy. A purchaser or lessee is expected to verify all information to his/her own satisfaction. Zoning information subject to change and not warranted. Always confirm current requirements with local governing agencies.

# Demographics Map & Report

Apollo Professional Center  
For Lease



POPULATION	0.5 MILES	1 MILE	1.5 MILES
Total Population	1,168	2,661	6,503
Average Age	43.5	38.5	39.8
Average Age (Male)	43.3	37.9	39.1
Average Age (Female)	43.6	41.7	43.2

HOUSEHOLDS & INCOME	0.5 MILES	1 MILE	1.5 MILES
Total Households	406	1,113	3,247
# of Persons per HH	2.9	2.4	2.0
Average HH Income	\$64,795	\$53,209	\$49,281
Average House Value	\$153,922	\$124,804	\$141,756

2020 American Community Survey (ACS)

ROB BECKNER, SIOR

Principal  
321.722.0707 x11  
Rob@TeamLBR.com

HAYDEN BROUILLETTE

Jr. Associate  
321.722.0707 x23  
Hayden@teamlbr.com



Information contained herein has been obtained through sources deemed reliable but cannot be guaranteed as to its accuracy. A purchaser or lessee is expected to verify all information to his/her own satisfaction. Zoning information subject to change and not warranted. Always confirm current requirements with local governing agencies.