



JOHN STANLEY
&
ASSOCIATES

COMMERCIAL REAL ESTATE



**2540 Midpark Drive
Montgomery, AL 36109**

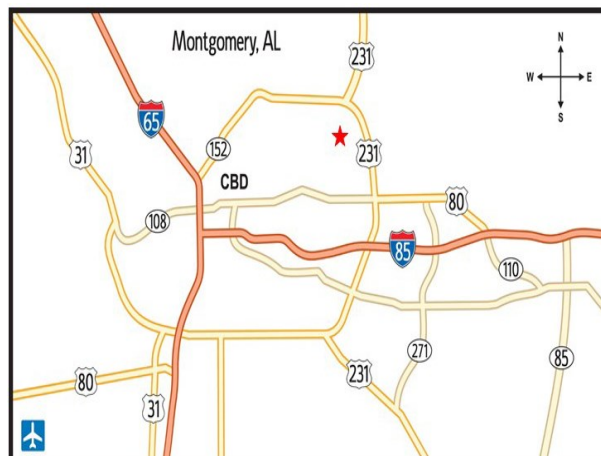
FOR LEASE

- **Lease Price:** \$7.00/S.F. (NNN)
- **Building Area:** ± 14,040 S.F.
- **Land Area:** ± 1.42 Acres
- **Loading Docks:** 2 Grade Level, 1 Dock with Leveler
- **Zoning:** M-1 (Light Industrial)
- **Best Use:** Distribution/Service Business
- **Visibility:** Good
- **Possession:** Immediate
- **Listing Type:** Exclusive

Excellent office/warehouse building with grade-level and dock-high loading doors. Located in Gunter Industrial Park. Contact Lee Meriwether, CCIM, for more information at (334) 398-1808.



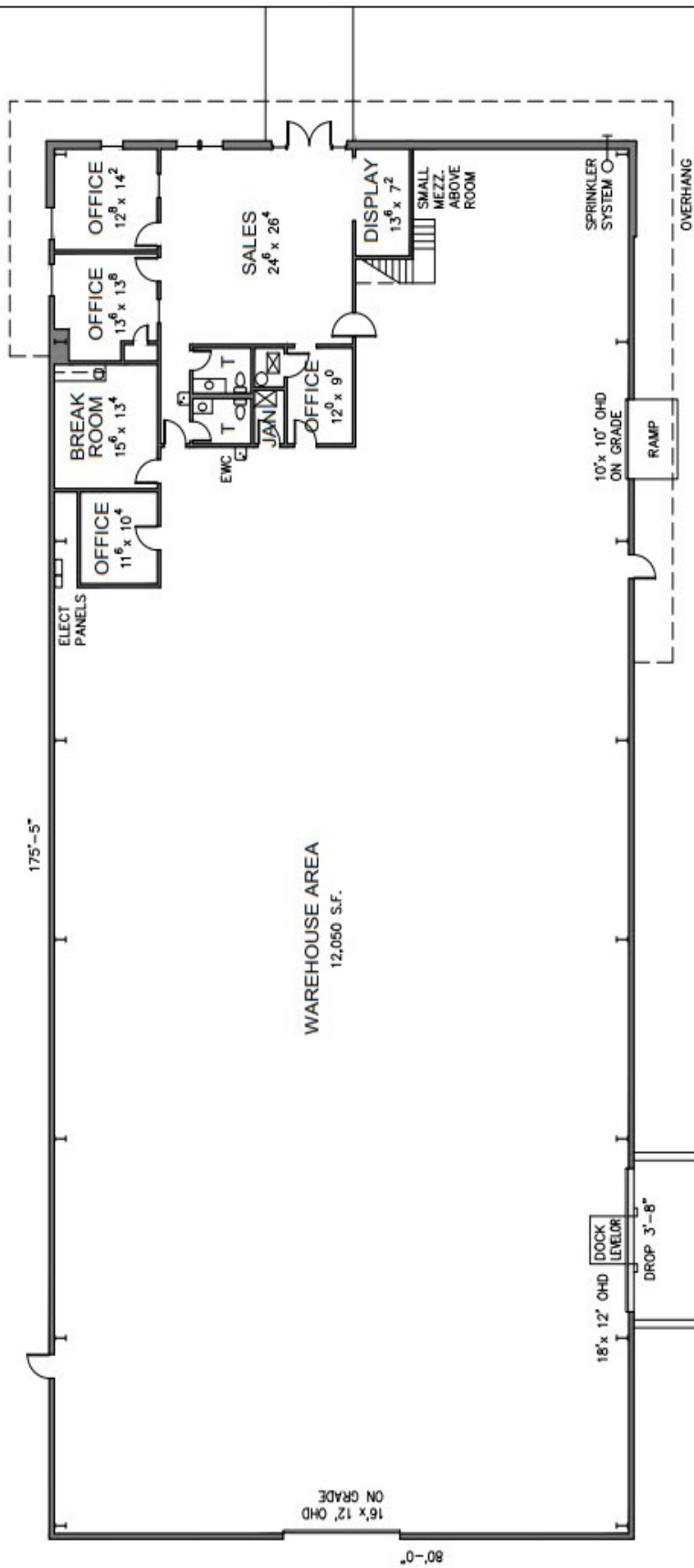
Lee W. Meriwether, CCIM
John Stanley & Associates, Inc.
4747 Woodmere Boulevard
Montgomery, AL 36106
(334) 271-2475 voice
(334) 271-2421 fax
(334) 398-1808 cell
lmeriwether@johnstanleyassociates.com
www.johnstanleyassociates.com



All information is from sources deemed reliable, but no warranty is made as to the accuracy thereof and same is submitted subject to errors, omissions, change of price, or other conditions, such as prior sales or withdrawal without notice by John Stanley & Associates, Inc. or the Owner.

08/04/2025

7/21/2025



Property Address:

2540 Midpark Drive
Montgomery, Alabama

Building Data:

Gross Building Area	- 14,040 S.F.
Overhang Covered	- 840 S.F.
Office / Admin.	- 1,990 S.F.
Warehouse	- 12,050 S.F.



