

# 3 Industrial Lots - For Sale

Commercial Circle, Fort Pierce, FL 34951

# NAI Southcoast



Presented by

Nikolaus M. Schroth, CCIM  
Principal | Broker Associate  
+1 772 286 6292  
nikschroth@naisouthcoast.com  
www.naisouthcoast.com

J. Jeffery Allman, Jr.  
Principal | Broker Associate  
+1 772 286-6292 c +1 772 283 1555  
jeff@naisouthcoast.com  
www.naisouthcoast.com

James McKinney  
Sales Associate  
+1 772 349 3414  
jamesmckinney@naisouthcoast.com  
www.naisouthcoast.com

**KINGS HWY INDUSTRIAL PARK**

FOR SALE:  
**\$705,000 PER LOT**



# 3 Industrial Lots - For Sale

Commercial Circle, Fort Pierce, FL 34951

The Offering

## Property Details

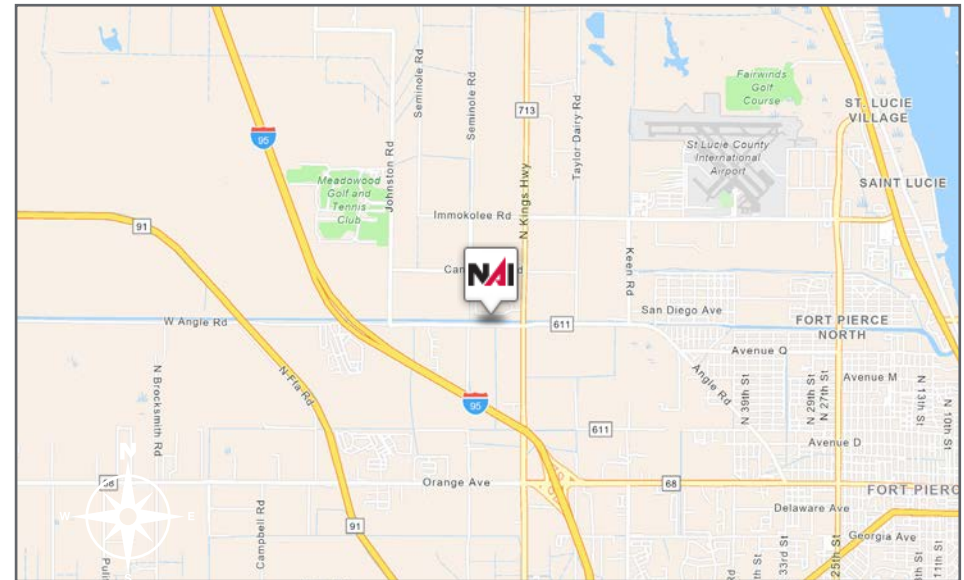
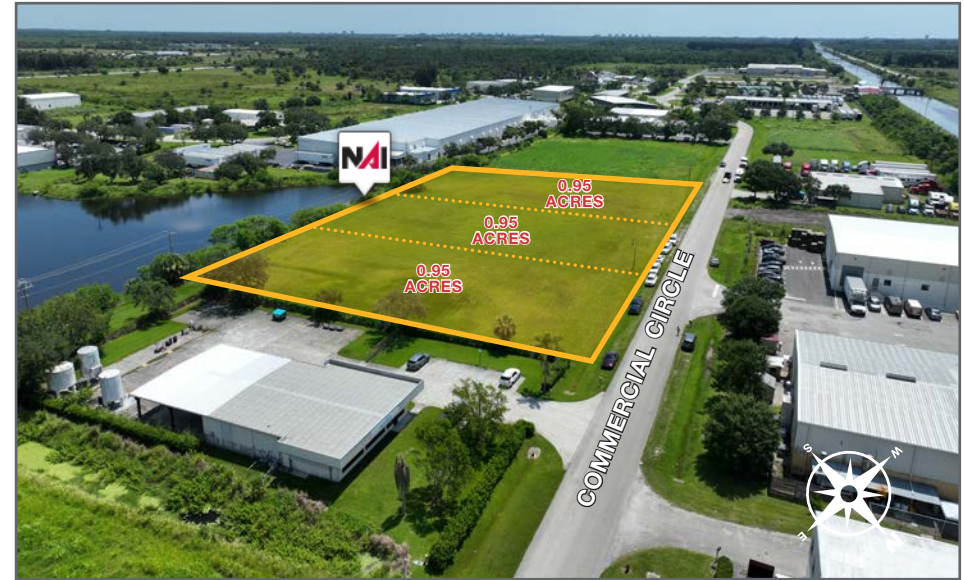
- Address: Commercial Circle, Fort Pierce, FL 34951
- Parcel IDs: 1335-801-0026-000-9  
1335-801-0024-000-5  
1335-801-0025-000-2
- Pricing: \$705,000 Per Lot
- Available Size: Three (3) Lots 0.95 Acres each
- Utilities: Fort Pierce Utilities Authority
- Zoning: IL, Industrial Light

## Property Overview

Situated within the well-established Kings Highway Industrial Park, this offering includes three  $\pm 0.95$ -acre light industrial lots—available individually or as a combined  $\pm 2.85$ -acre assemblage. These parcels represent a rare opportunity for developers, investors, and owner-users seeking flexible space in one of St. Lucie County's key industrial corridors.

Zoned for light industrial use, the lots are well-suited for a wide range of applications, including warehousing, distribution, light manufacturing, and service-related operations. The property benefits from excellent access to major transportation routes, located just minutes from both Interstate 95 and Florida's Turnpike. This strategic location enhances operational efficiency and provides strong regional connectivity throughout the Treasure Coast and beyond.

As part of the Kings Highway Industrial Park, the site is surrounded by other established businesses and infrastructure, adding further value for potential users. Whether you're looking to build a single-user facility or capitalize on a multi-tenant development, these parcels offer flexibility, visibility, and long-term investment potential in a growing industrial submarket.





# 3 Industrial Lots - For Sale

Commercial Circle, Fort Pierce, FL 34951

Looking North





# 3 Industrial Lots - For Sale

Commercial Circle, Fort Pierce, FL 34951

Looking South





# 3 Industrial Lots - For Sale

Commercial Circle, Fort Pierce, FL 34951

Looking East

TREASURE COAST  
INTERNATIONAL AIRPORT



DOWNTOWN  
FORT PIERCE



N KINGS HWY

W ANGLE RD



Al's Family Farm  
Citrus



AAA Cooper Trans.



E M Adams



Paul Jaquin & Sons



Nikfisk/Premiere Pro



COMMERCIAL CIRCLE



Boat Builder Central



SpectraComposites



OceanGrown





# 3 Industrial Lots - For Sale

Commercial Circle, Fort Pierce, FL 34951

Looking West

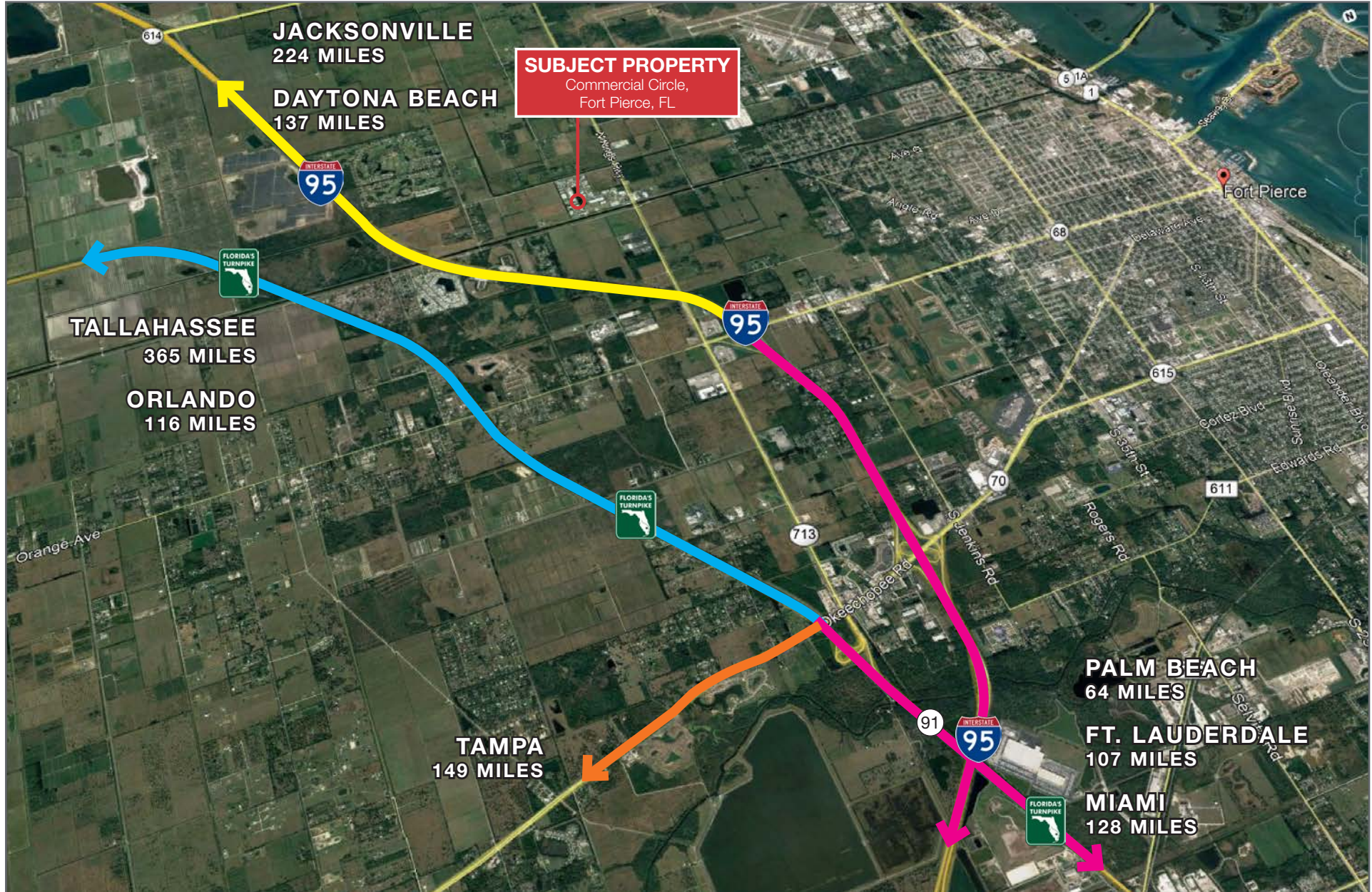




# 3 Industrial Lots - For Sale

Commercial Circle, Fort Pierce, FL 34951

## Drive Time Map

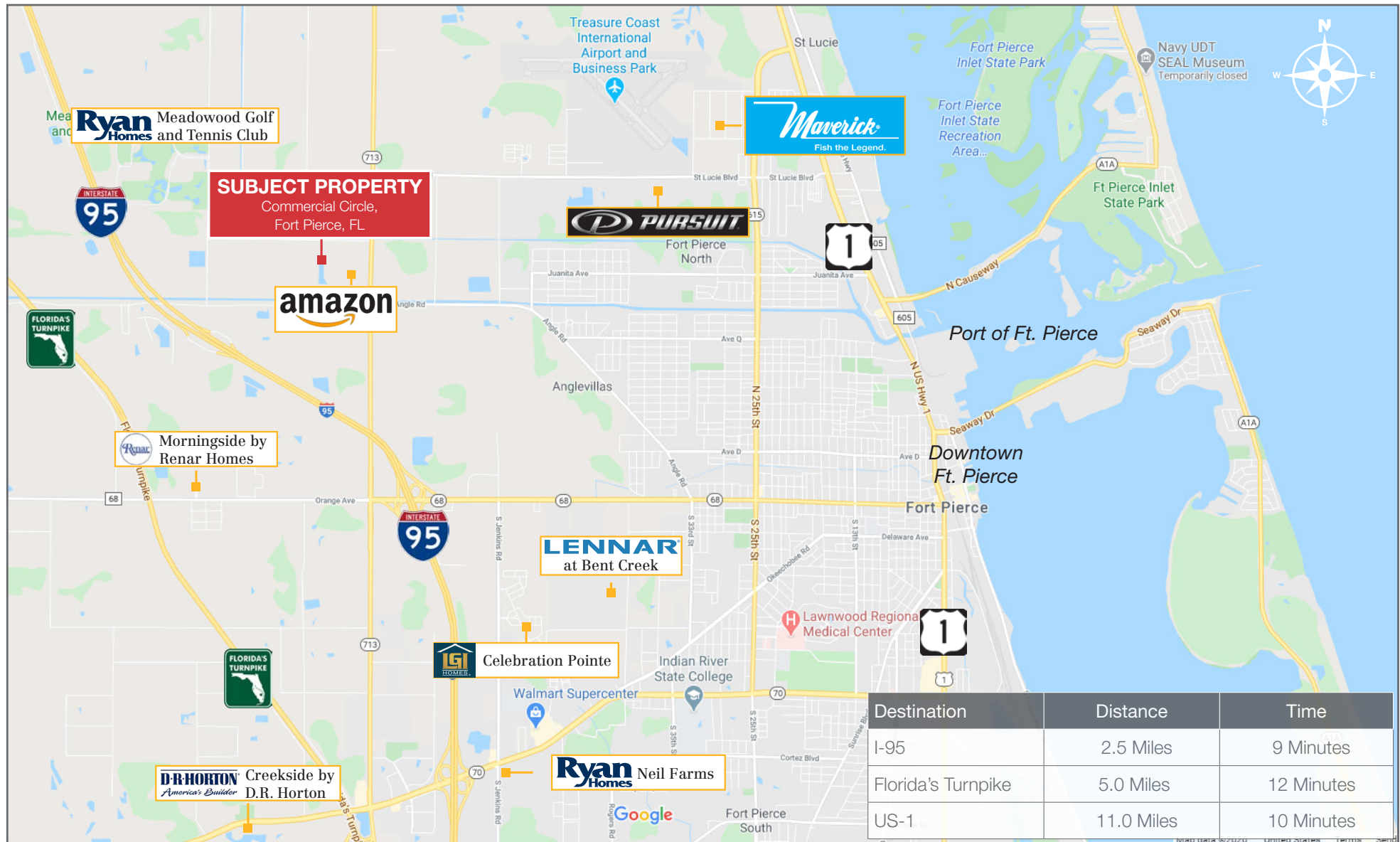




# 3 Industrial Lots - For Sale

Commercial Circle, Fort Pierce, FL 34951

## Ft. Pierce Area Map

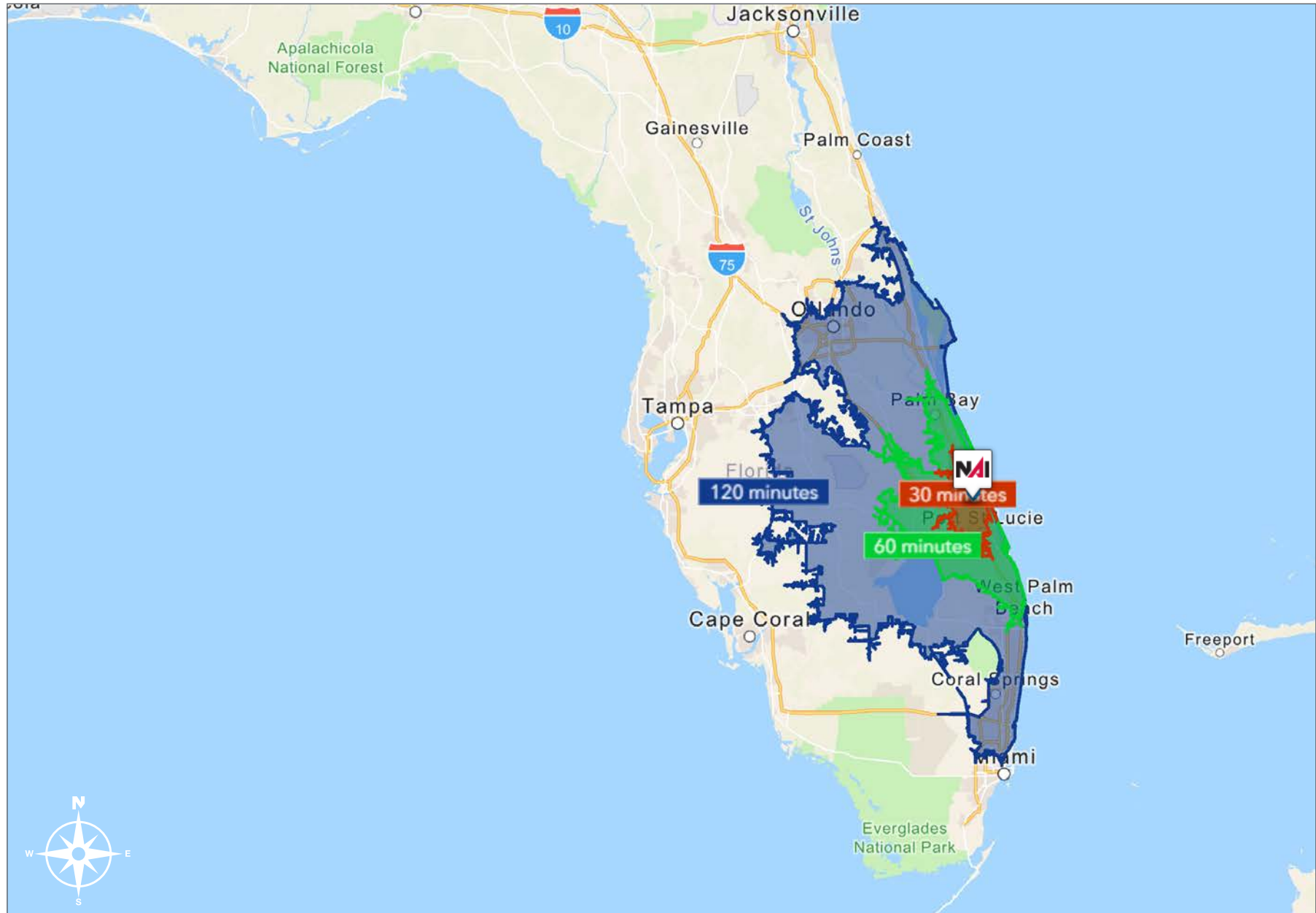




# 3 Industrial Lots - For Sale

Commercial Circle, Fort Pierce, FL 34951

Drive Time





# 3 Industrial Lots - For Sale

Commercial Circle, Fort Pierce, FL 34951

Strong Economic Expansion  
2019-Present

## Economic Expansion by Year

	Company	Industry	Location	Project Scope	Projected New Jobs	Baseline Employment	2024 Total Employment	Facility Square Footage
Calendar Year 2019	Dirty Deeds Cleaning Service	Small Business	St. Lucie County	EXPANSION	31	44	22	6,000
	Drexel Metals	Manufacturing	Port St. Lucie	NEW	25	0	7	25,000
	PlusOneAir	Aviation	St. Lucie County	NEW	25	0	40	25,000
	Pursuit Boats II	Marine	St. Lucie County	EXPANSION	200	404	584	236,000
	Ross Mixing	Manufacturing	Port St. Lucie	EXPANSION	16	40	40	55,000
Calendar Year 2020	California Closets	Warehouse/ Distribution	St. Lucie County	EXPANSION	10	28	37	10,000
	Citrus Extracts	Manufacturing	Fort Pierce	NEW	40	35	18	75ft. Tower
	FedEx Ground	Warehouse/ Distribution	Port St. Lucie	NEW	490†	0	451†	245,000
	Indian River Spirits	Manufacturing	St. Lucie County	NEW	5	0	X	20,000
	Interstate Crossroads Business Center by The Silverman Group	Industrial Development	Fort Pierce	NEW	**	0	**	1,133,000
	Legacy Park at Tradition by Sansone Group	Industrial Development	Port St. Lucie	NEW	1,602**	0	‡	2,347,315 ‡
	Total Truck Parts	Warehouse/ Distribution	Port St. Lucie	EXPANSION	10	16	15	51,780
	Wolfube	Warehouse/ Distribution	St. Lucie County	NEW	15	0	2	30,000
Calendar Year 2021	Amazon First-mile Fulfillment Center	Warehouse/Distribution	Port St. Lucie	NEW	500	0	1200	1,100,000
	Chandler Bats	Manufacturing	Port St. Lucie	NEW	11	0	21	17,000
	Chemical Technologies Holdings	Manufacturing	St. Lucie County	NEW	5	0	2	8,000
	Cheney Brothers	Warehouse/Distribution	Port St. Lucie	NEW	350	0	310	427,000
	Contender Boats	Marine	St. Lucie County	NEW	200	0	120	100,000
	D&D Welding	Manufacturing	St. Lucie County	EXPANSION	10	32	42	33,000
	FA Precast	Manufacturing	St. Lucie County	EXPANSION	0	22	21	17,000
	Freshco/Indian River Select	Manufacturing	Fort Pierce	EXPANSION	20	90	55	16,375
	Jansteel	Manufacturing	Port St. Lucie	NEW	55	0	X	67,193
	Kings Logistics Center	Industrial Development	St. Lucie County	NEW	433*	0	0	650,000
	Maverick Boat Group	Marine	St. Lucie County	EXPANSION	150	520	333	106,000
	South Florida Logistics Center 95	Industrial Development	St. Lucie County	NEW	566** ‡	0	0 ‡	1,100,000**
	SRS Distribution	Warehouse/Distribution	Fort Pierce	NEW	11	0	NR	32,000

X Not expected to be operational

NR No response

\*\* Projected new jobs derived from the US Energy Information Administration Energy Consumption Survey = Median square feet per worker at 1,500

	Company	Industry	Location	Project Scope	Projected New Jobs	Baseline Employment	2024 Total Employment	Facility Square Footage
Calendar Year 2022	Amazon Delivery Station	Warehouse/Distribution	Port St. Lucie	NEW	200	170	300	220,000
	Arcosa Meyer Utility Structures	Manufacturing	St. Lucie County	NEW	99	0	36	81,750
	Glades Commerce Center	Industrial Development	Port St. Lucie	NEW	192*	0	0	287,500
	Glades Logistics Park	Industrial Development	Port St. Lucie	NEW	236*	0	0	354,200
	Interstate Commerce Center	Industrial Development	Fort Pierce	NEW	138*	0	NR	207,458
	Islamorada Distillery	Manufacturing	St. Lucie County	EXPANSION	15	0	8	19,841
	Islamorada Warehouse	Warehouse/Distribution	St. Lucie County	EXPANSION	0	0	0	22,000
	Legacy Park Spec A	Industrial Development	Port St. Lucie	NEW	112*‡	0	23**	168,000
	Legacy Park Spec B	Industrial Development	Port St. Lucie	NEW	347*	0	0	520,000
	MJC Express	Transportation	Fort Pierce	NEW	25	0	X	6,000
	Pursuit Boats Phase 3	Marine	St. Lucie County	EXPANSION	100	634	584	109,000
	St. Lucie Commerce Center	Industrial Development	Fort Pierce	NEW	800*	0	X	1,200,000
	Tenet Health	Life Sciences	Port St. Lucie	NEW	600†	0	0	181,925
Calendar Year 2023	Accel Industrial Park	Industrial Development	Port St. Lucie	NEW	138*‡	0	0	389,000
	Dragonfly Commerce Park	Industrial Development	Port St. Lucie	NEW	270*	0	0	405,508
	LactaLogics	Life Science/Headquarters	Port St. Lucie	NEW	60	0	6	60,000
	Legacy Park Cold Storage Facility	Warehouse/Distribution	Port St. Lucie	NEW	253*	0	0	378,521
	Orange 95 Commerce Center	Industrial Development	Fort Pierce	NEW	391*‡	0	0	587,000‡
	Tradition Commerce Park	Industrial Development	Port St. Lucie	NEW	355*	0	0	532,346
	Treasure Coast Food Bank	Warehouse/Distribution	Fort Pierce	EXPANSION	53	71	70	132,000
	Twin Vee	Marine	Fort Pierce	EXPANSION	0	120	55	23,456
Calendar Year 2024	Alex Lee, Inc.	Warehouse/Distribution	Port St. Lucie	NEW	121	0	0	165,000
	Apollo Group	Warehouse/Distribution	St. Lucie County	NEW	300	0	24	245,900
	APP Jet Center	Aviation	St. Lucie County	EXPANSION	0	22	22	33,600
	BroadRange Logistics	Warehouse/Distribution	Fort Pierce	NEW	755*	0	1	\$
	Costco Warehouse Depot Phase I	Warehouse/Distribution	Port St. Lucie	NEW	265	0	0	622,685
	Infinity Flight Group	Aviation	St. Lucie County	NEW	30	0	0	8,825
	Lightbridge Academy	Education	Port St. Lucie	NEW	22	0	27	11,000
	Marine Digital Integrators	Manufacturing	Port St. Lucie	NEW	54	0	0	\$
	PI Motor Club	Leisure/Hospitality	St. Lucie County	NEW	125	0	0	TBD
	Project Four PSL	Manufacturing	Port St. Lucie	NEW	225	0	0	250,000
	SportLife Distributing	Headquarters	Fort Pierce	EXPANSION	30	13	13	25,000
<b>8 YEAR TOTALS</b>					<b>12,935</b>	<b>6,743</b>	<b>11,297</b>	<b>16,510,578</b>

† Includes full-time, part-time and per diem workers

‡ Projected new jobs and facility square footage net of announced projects within the park; total employment reported under end user projects

All or some jobs and/or square footage transferred to another project listed in this Project Update as a separate project (usually end users) and often in a different year

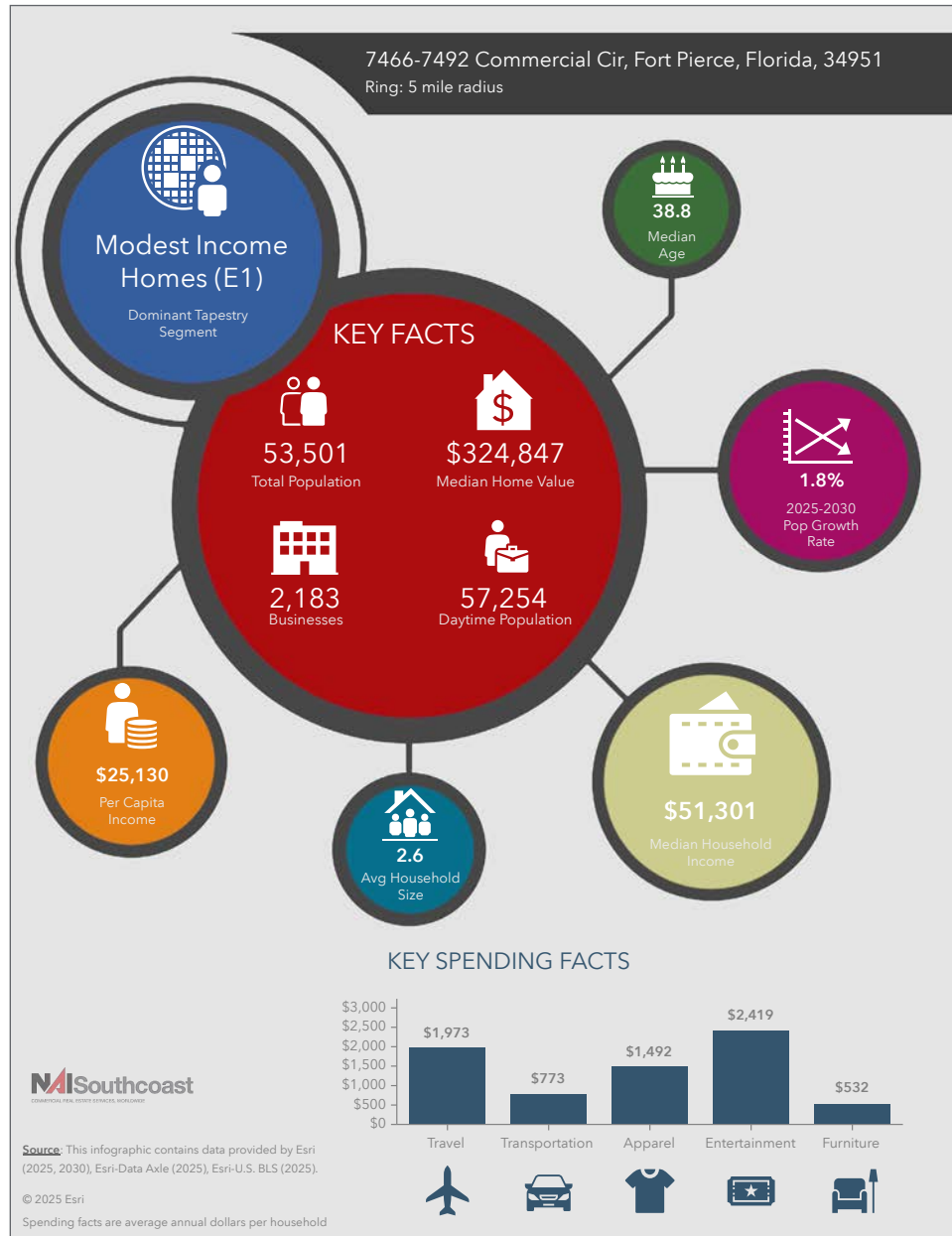
\$ Square footage – see Interstate Crossroads & Legacy Park 2020



# 3 Industrial Lots - For Sale

Commercial Circle, Fort Pierce, FL 34951

## 2025 Demographics



### Population

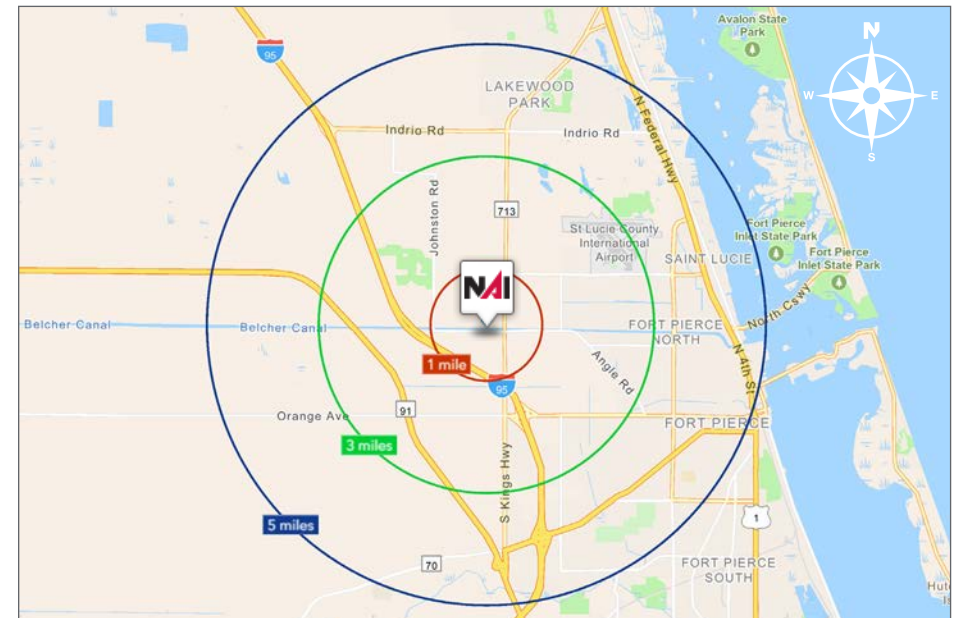
- 1 Mile: 197
- 3 Mile: 10,635
- 5 Mile: 53,501

### Average Household Income

- 1 Mile: \$73,767
- 3 Mile: \$81,950
- 5 Mile: \$67,522

### Median Age

- 1 Mile: 40.9
- 3 Mile: 39.9
- 5 Mile: 38.8

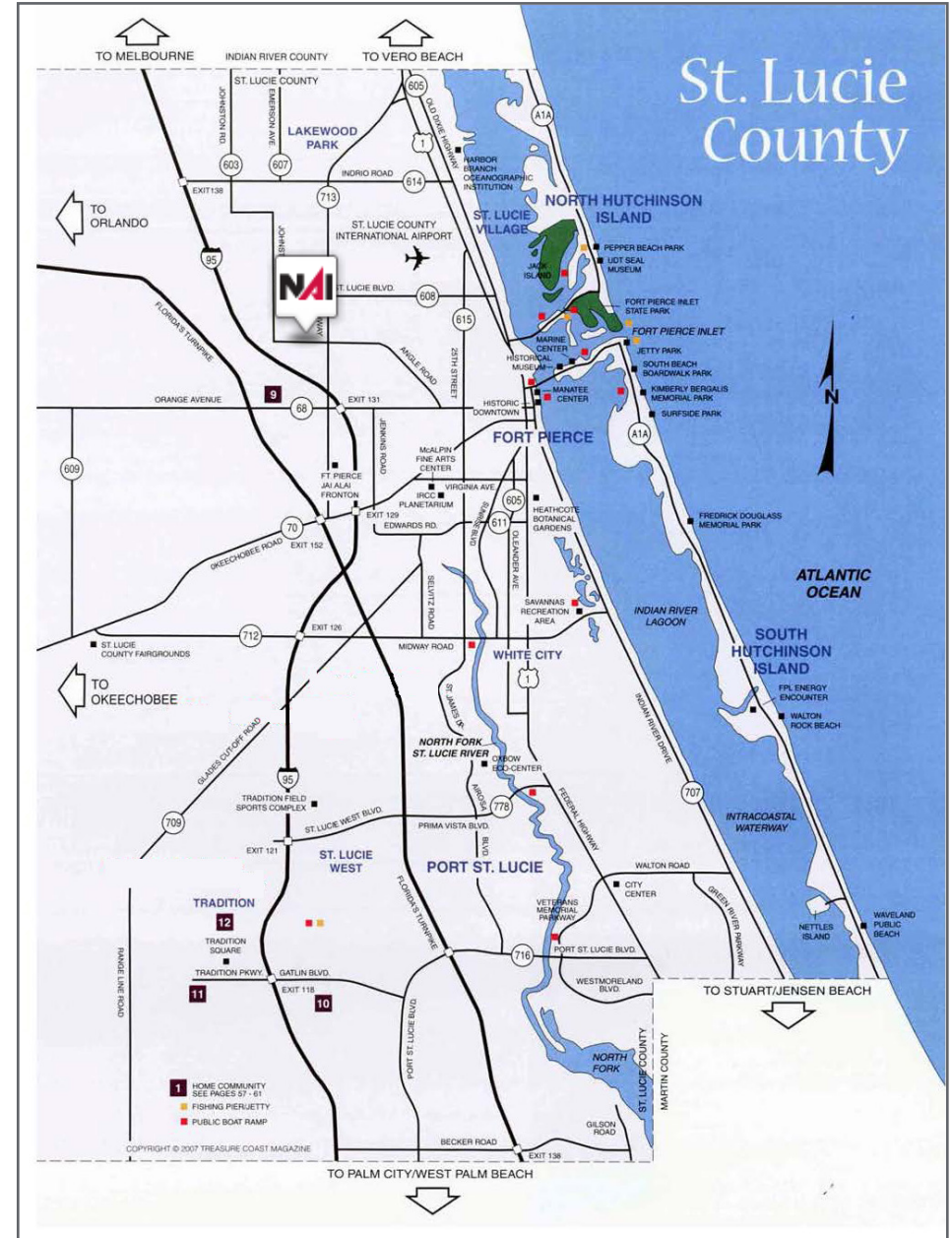
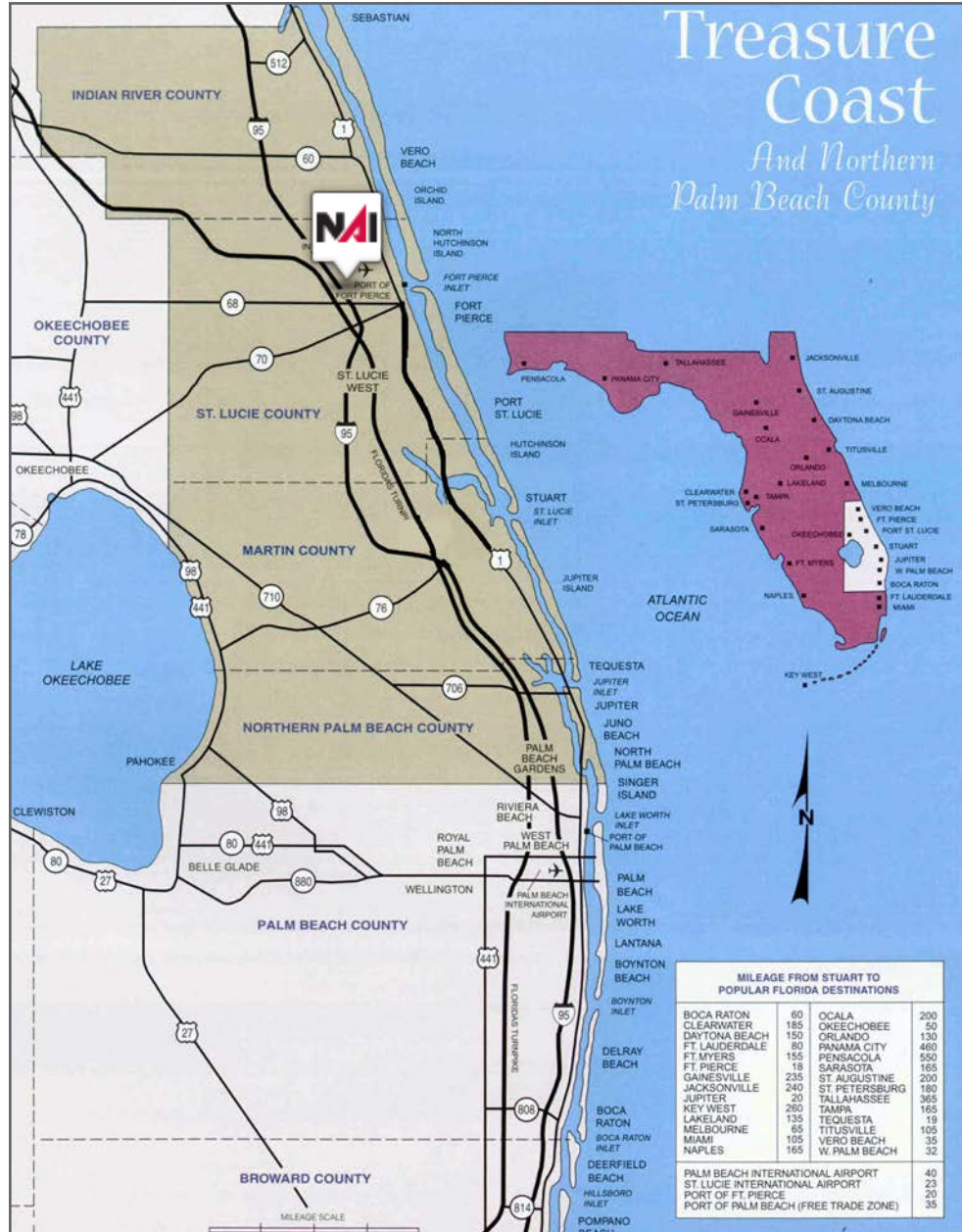




# 3 Industrial Lots - For Sale

Commercial Circle, Fort Pierce, FL 34951

## Area Maps





# City Overview

City of Ft. Pierce, Florida



Fort Pierce is famous for being a quaint fishing village, but take a closer look and you will find a treasure trove of activities. As one of the most diverse communities on the Treasure Coast, Fort Pierce has the cultural excitement to rival any “big city” atmosphere. With weekly and monthly events and premier shows at the Sunrise Theatre, visitors never run out of things to do or people to meet.

Fort Pierce is located on the pristine Indian River Lagoon with one of the best all-weather inlets in the state of Florida. Even though Fort Pierce is known for its world class fishing, some visitors would rather take an eco-friendly motorized kayak down the Indian River or dolphin watch on a tour boat. Paddle boarding and horseback riding on unspoiled beaches is also a hit among tourists. Fort Pierce’s natural beauty is world renowned.

Our cultural enhancements include the Zora Neale Hurston Trail, commemorating the noted author and anthropologist who lived her last years in Fort Pierce and the Highwaymen Heritage Trail. The Highwaymen, also referred to as the Florida Highwaymen, are 26 storied, world-renown African American landscape artists who originated in the City of Fort Pierce. Visitors from all over the United States visit Fort Pierce to experience the Highwaymen Heritage Trail, a self-guided engaging and educational experience that recognizes these mostly self-taught landscape artists who have strong local, state, national and international significance.

Museums in Fort Pierce include the newly-enlarged Florida landscape artist A.E. “Beanie” Backus museum and the St. Lucie Regional History Museum, with its satellite Adams Cobb Cultural Museum in the P.P. Cobb Building. Fort Pierce’s most popular tourist attraction, the National UDT Navy SEAL museum, commemorates the birth of the Navy frogmen here in Fort Pierce, and chronicles the evolution of this military unit to today’s Navy SEALs.

Fort Pierce City Marina is home to the Southern Kingfish Association’s National Championship Fishing Tournament every three years bringing 250-300 fishing teams to Downtown Fort Pierce. SKA has also committed to add Fort Pierce to the tournament’s Pro Tour schedule during the off years.



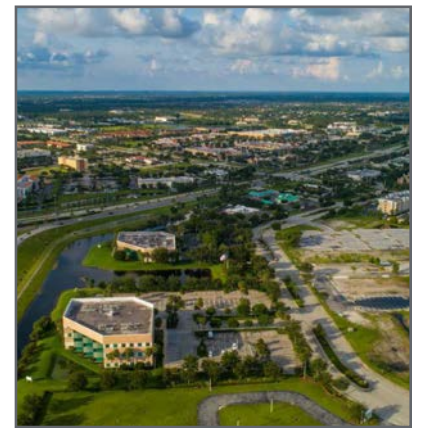
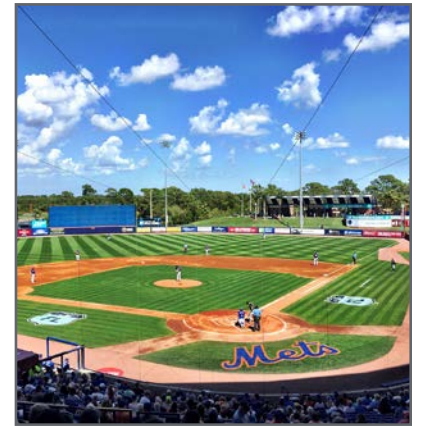
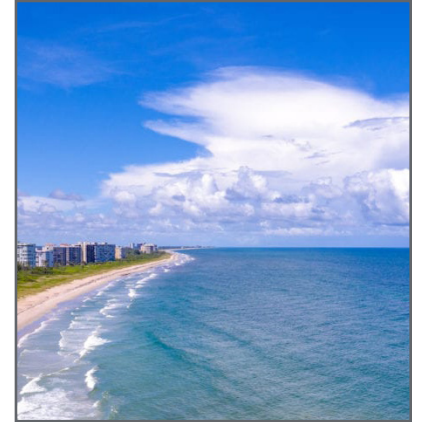
# Regional Overview

St. Lucie County, FL

Extensive, dependable transportation and easy access is the key to growth, and St. Lucie County has both in abundance. Interstate Highway 95 and U.S. Highway 1 provide easy access to the country's east coast, from Key West to Maine. The Florida Turnpike stretches from just south of Miami through northern-central Florida, while State Road 70 runs from U.S. Highway 1 in Fort Pierce west to Bradenton, Florida. St. Lucie County offers a plethora of transportation linkages which include rail, a custom-serviced international airport, and a deep-water port – all of which enable easy access to all St. Lucie County has to offer. The St. Lucie County International Airport is also one of the busiest general aviation airports in the state.

The county has a population of over 373,586 and has experienced growth of over 34% since 2010. The area economy is a blend of emerging life science R&D with traditional manufacturing, agriculture, tourism and services. St. Lucie County's natural resources are enviable, with more than 21 miles of pristine coastline and beaches, coral reefs, more than 20,000 acres of public parks and nature preserves, and miles of rivers and waterways. The area boasts over 20 public and semiprivate courses, with prices ranging from upscale to very affordable, and the great weather allows for play all year round. St. Lucie County is home to Clover Park in Port St. Lucie, the Spring Training home of the New York Mets.

The county is host to Indian River State College, an institution that has won national recognition for excellence and innovation applied toward training and education. St. Lucie County boasts 52 schools with a total of 43,612 students and 8,800 staff. The Economic Development Council of St. Lucie County (EDC) is a non-profit organization with the goal of creating more high-paying jobs for residents by working in concert on agreed upon strategies to promote the retention and expansion of existing businesses, as well as attracting new ones to St. Lucie County. Workers employed in St. Lucie County are clustered in the Health Care and Social Assistance (18.4%) and Retail Trade (11.9%) industries. Workers living in St. Lucie County are concentrated in the Health Care and Social Assistance (16.3%) and Retail Trade (14.1%) industries. Since 2017 the EDC has facilitated 40 expansion and new attraction job-creating projects with a net growth of building area of approximately 6,500,000 square feet.







Nikolaus M. Schroth, CCIM  
Principal | Broker Associate  
+1 772 286 6292  
nikschroth@naisouthcoast.com



J. Jeffery Allman, Jr.  
Principal | Broker Associate  
+1 772 286-6292 c +1 772 283 1555  
jeff@naisouthcoast.com



James McKinney  
Sales Associate  
+1 772 349 3414  
jamesmckinney@naisouthcoast.com

## 3 Industrial Lots - For Sale

Commercial Circle, Fort Pierce, FL 34951



FOR SALE:  
**\$705,000 PER LOT**