

FOR LEASE – EXECUTIVE SUITES **7910 Summerlin Lakes Dr., Fort Myers, FL 33907**

LEASE PRICE: Starting @ \$750/mth.

Discounts for multiple offices

Window Offices & Interior Offices Available

SUITE SIZE: 90± SF or larger

ZONED: C-1A

YEAR BUILT: 2000

PROPERTY DESCRIPTION:

- Tenants include RE/MAX Realty Group Headquarters, Heidrick & Co. Insurance, Galvano Construction, Title Group of Ft. Myers and Mortgage 1.
- Excellent Cypress Lake/Summerlin Rd corridor exposure. Located between Summerlin Rd. & Cleveland Ave. (US 41)
- Great visibility and ground floor access.
- Beautifully built-out Class “A” office.
- Parking ratio (60 + 3 Handicap).
- Easy access to Downtown Fort Myers, US 41, I-75 and RSW.



Michael J. Frye, CCIM|CEO
Hall of Fame, Lifetime Achievement
(239) 281-0441
mfrye@ccim.net



Coleen Frye, ACP
Commercial Specialist
(239) 218-5027
cfrye@fryecommercialgroup.com

RE/MAX REALTY GROUP
7910 Summerlin Lakes Dr.
Fort Myers, FL 33907
O: (239) 489-0444
ftmyerscommercial.com
michaelfrye.com

For Lease – Exec Suite
7910 Summerlin Lakes Dr.



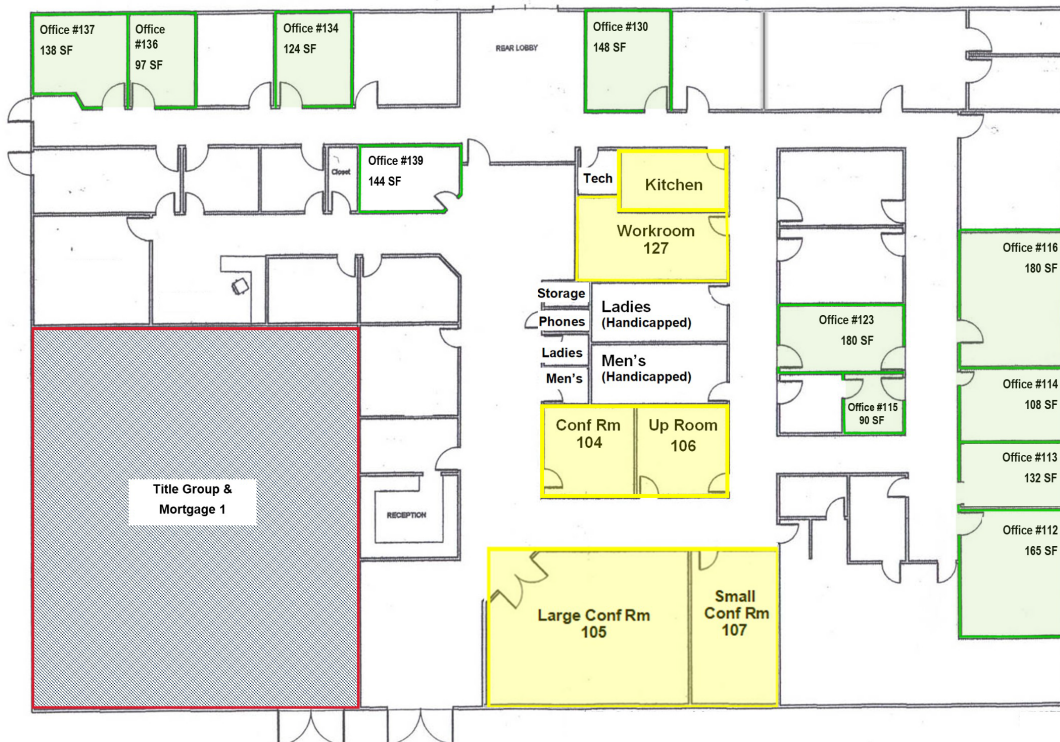
Michael J. Frye
CCIM|CEO
(239) 281-0441



Coleen Frye, ACP
(239) 218-5027

Executive Suites

EXECUTIVE SUITES | 7910 Summerlin Lakes Dr., Fort Myers, FL 33907



AVAILABLE SPACE

GREEN OUTLINE (EXECUTIVE SUITES)

Window Offices:

112 | \$1,375/mth.
113 | \$1,100/mth.
114 | \$900/mth.
116 | \$1,500/mth.
130 | \$1,233.33/mth.
134 | \$1,033.33/mth.
136 | \$808.33/mth.
137 | \$1,150/mth.

Interior Offices:

115 | \$750/mth.
123 | \$1,500/mth.
139 | \$1,200/mth.

Common Areas—Yellow Outline

105 Large Conf Rm
107 Small Conf Rm
104 Conf Rm (across from reception)
106 Up Room
127 Work Room
Kitchen

July 2025



Michael J. Frye
CCIM|CEO
(239) 281-0441



Coleen Frye, ACP
(239) 218-5027

EXECUTIVE SUITES

The Executive Suites include:

- Full-time front desk to meet & greet your clients
- Janitorial Services
- Coffee/Tea/Water Service and Kitchen
- Conference and Meeting Rooms
- Secretarial Services*
- Ample Staff & Client Parking
- 24-Hour Key Card Access
- FedEx drop box

*Additional Fees Apply



For Lease – Exec Suite
7910 Summerlin Lakes Dr.



Michael J. Frye
CCIM|CEO
(239) 281-0441



Coleen Frye, ACP
(239) 218-5027

EXECUTIVE SUITES



For Lease – Exec Suite
7910 Summerlin Lakes Dr.



Michael J. Frye
CCIM|CEO
(239) 281-0441



Coleen Frye, ACP
(239) 218-5027

EXECUTIVE SUITES



CONFERENCE ROOMS



For Lease – Exec Suite
7910 Summerlin Lakes Dr.



Michael J. Frye
CCIM|CEO
(239) 281-0441



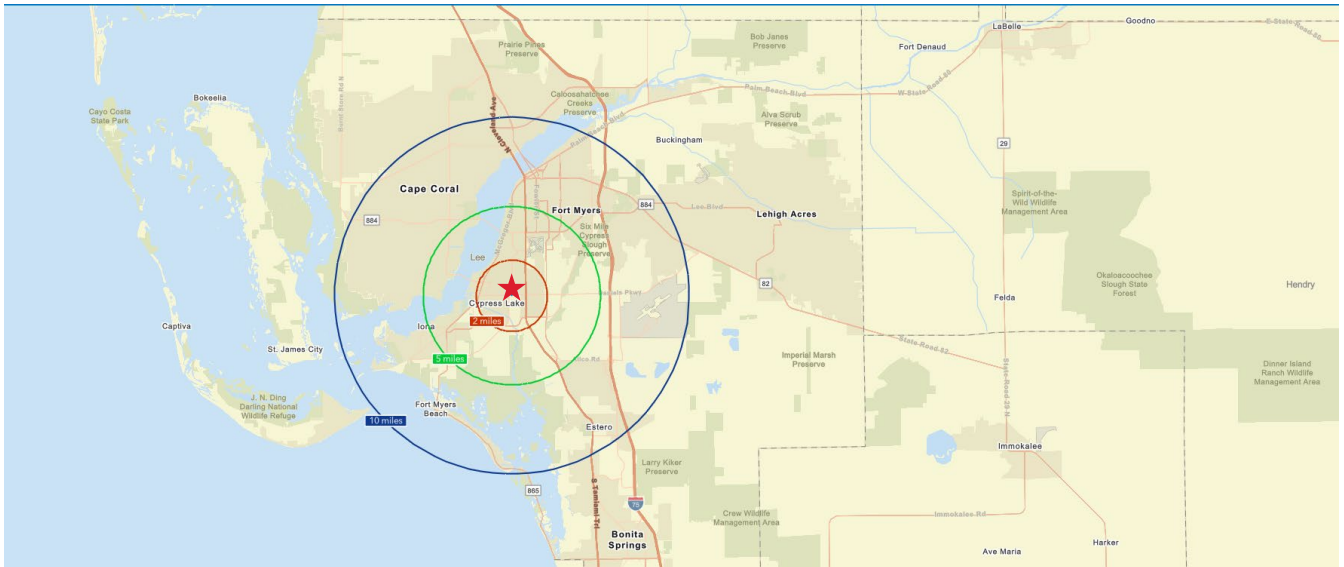
Coleen Frye, ACP
(239) 218-5027

DEMOGRAPHICS

DEMOGRAPHICS (2024)

7910 Summerlin Lakes Dr., Fort Myers, FL

	2 Miles	5 Miles	10 Miles
Total Population	40,462	153,198	485,413
Median Age	52.1	53.1	49.8
Total Households	19,807	71,934	210,548
Traffic Count	34,500 (Summerlin Rd) 23,000 (Cypress Lake Dr)		



7910 Summerlin Lakes Dr., Fort Myers, FL 33907 | O: (239) 489-0444 | ftmyerscommercial.com | michaelfrye.com

RE/MAX Realty Group makes no guarantees, warranties or representations as to the completeness or accuracy thereof.

This property presentation is submitted subject to errors, omissions, change of price or conditions, prior sale or lease, or withdrawals without notice.

REMAX

COMMERCIAL
RE/MAX REALTY GROUP

For Lease – Exec Suite
7910 Summerlin Lakes Dr.



Michael J. Frye
CCIM|CEO
(239) 281-0441



Coleen Frye, ACP
(239) 218-5027

AREA BUSINESSES



7910 Summerlin Lakes Dr., Fort Myers, FL 33907 | O: (239) 489-0444 | ftmyerscommercial.com | michaeljfrye.com

RE/MAX Realty Group makes no guarantees, warranties or representations as to the completeness or accuracy thereof.

This property presentation is submitted subject to errors, omissions, change of price or conditions, prior sale or lease, or withdrawals without notice.