

# Lots 20,27,28 Millennium Drive

Crystal Lake, IL 60012

## For Sale

MLS #12428586

**LIGHT INDUSTRIAL LAND**



**LIGHT INDUSTRIAL LAND 7.17 ACRES**

**\$659,000 \$2.11 PSF**

### VACANT LIGHT INDUSTRIAL LAND 7.17 ACRES

7.17 acres of vacant land zoned light industrial and office. An architectural drawing features a site plan for 5 industrial flex buildings with a total of 54 units. The units are a mixture of 1,200 SF, 1,500 SF, and 1,800 SF.

Site plan was recently presented for a concept review to the Crystal Lake Planning and Zoning Commission and although no official vote was taken, the site plan received a unanimous positive reaction.

#### Specifications

Land Size:	7.17 Acres (312,325 SF)
Topography:	Level
Environmental Status:	Clean
Utilities:	to Site
Sewer/Water:	City
Frontage Dimensions:	500'
Zoning:	M
Taxes:	\$3,021 (2024)
PIN #:	14-33-226-016,017,009

[CLICK HERE TO VIEW OUR WEBSITE](#)

No warranty or representation is made as to the accuracy of the foregoing information. Terms of sale or lease and availability are subject to change or withdrawal without notice. This document is for information purposes only. No offer of sub-agency is being made.



Senior Broker  
**Michael Deacon**  
MichaelD@PremierCommercialRealty.com  
O: 847.854.2300 x28 C: 815.814.6500



**Lots 20,27,28 Millennium Drive**  
Crystal Lake, IL 60012

**For Sale**

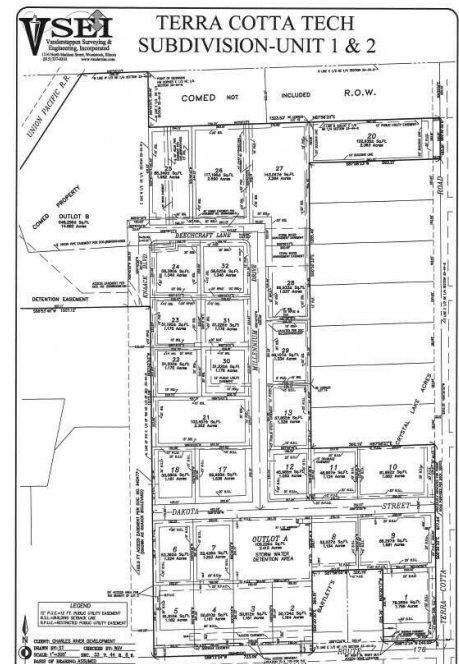
**LIGHT INDUSTRIAL LAND**



**CONCEPT SITE PLAN**



**FACADE RENDERING**



[CLICK HERE TO VIEW OUR WEBSITE](#)

*No warranty or representation is made as to the accuracy of the foregoing information. Terms of sale or lease and availability are subject to change or withdrawal without notice. This document is for information purposes only. No offer of sub-agency is being made.*



[www.PremierCommercialRealty.com](http://www.PremierCommercialRealty.com) | 847.854.2300 | 9225 S. Route 31, Lake in the Hills, IL 60156

Senior Broker  
**Michael Deacon**

[MichaelD@PremierCommercialRealty.com](mailto:MichaelD@PremierCommercialRealty.com)  
O: 847.854.2300 x28 C: 815.814.6500