

FOR LEASE



6616-6652 Rowan Rd | New Port Richey, FL 34653

Lease Rate | \$18.00 psf Modified Gross

- 2,830 sf office space available for occupancy in September 2025
- Unit 6636 provides 9-10 private offices, a reception/lobby area, plenty of open work space, storage rooms and two (2) restrooms
- Key West Style buildings with metal roofs and lots of windows
- Property is surrounded by beautiful & mature trees with plenty of land behind the buildings and each unit has a rear door for access
- Located on Rowan Road between Massachusetts Ave. and Main Street in New Port Richey
- Excellent visibility, signage and ample parking

Rowan Road Professional

Lisa Ingram
Commercial Associate
Cell: (727) 946-7973
lingram@cap-realty.com

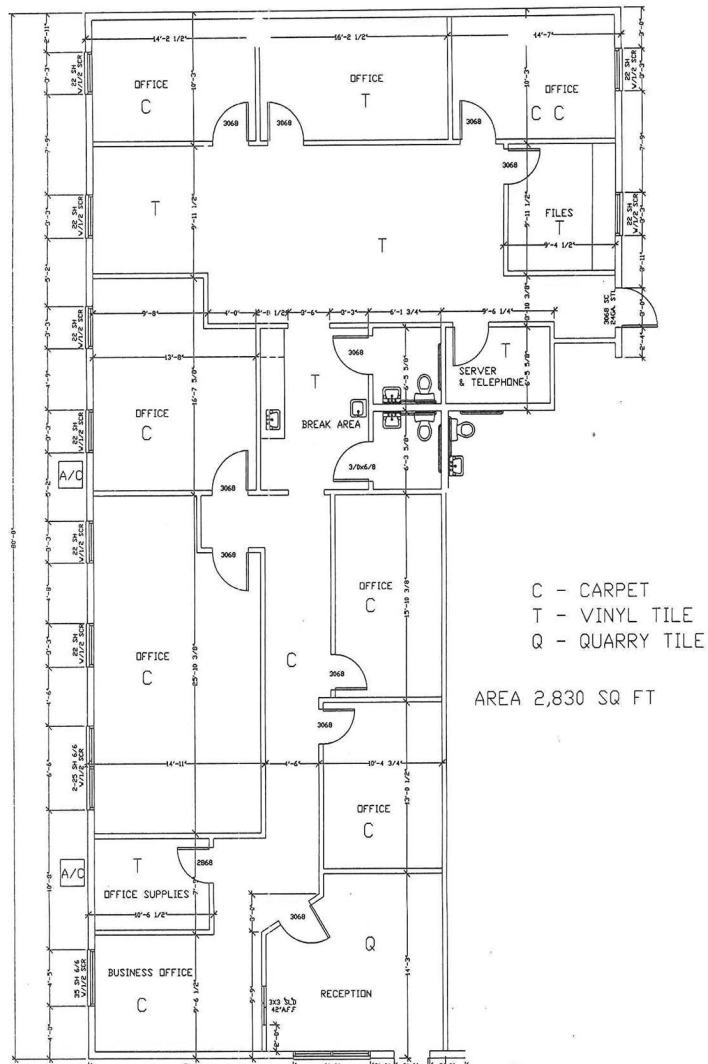
Office: (727) 376-4900
cap-realty.com



**COMMERCIAL ASSET
PARTNERS**

6616-6652 Rowan Rd | New Port Richey, FL 34653

6636 SPACE PLAN | 2,830 SF



Lobby has built-in reception window

PROPERTY FEATURES

6616-6652 Rowan Rd | New Port Richey, FL 34653

Demographics | 5 Miles



170,769

Population



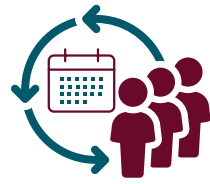
4%

Population Growth



\$67,378

Average HH Income



45.7

Median Age



CAP-Realty.com
(727) 376-4900

Visit us @ www.cap-realty.com
LinkedIn | Facebook | Instagram
Follow CAPRealty @ /commercialassetpartnersrealty/



COMMERCIAL ASSET
PARTNERS

PROFESSIONAL OFFICE SPACE