

Atlantic Ocean

Indian River

**FOR SALE**  
\$9,450,000

±20,505 SF Dealership/Service Opportunity

📍 3410 S US Highway 1, Fort Pierce, FL 34982



Presented By:

**NAI Southcoast**

**Douglas Legler**

Principal | Broker Associate

+1 772 405 7778

douglas@naisouthcoast.com

**Casey Combs**

Broker Associate

+1 772 285 8769

ccombs@naisouthcoast.com



NAI Southcoast | 100 SW Albany Avenue, 2nd Floor, Stuart, FL 34994 | O: 772.286.6292 | naisouthcoast.com



## Property Highlights

- Address: 3410 S US Hwy 1  
Fort Pierce, FL 34982
- Asking Price: \$9,450,000
- Ingress/Egress: Left In, Left Out
- Finished Area: 20,505 SF
- Land Size: 6.03 Acres
- Zoning: C-3; Commercial General
- Year Built: 2005
- Traffic Count: 31,500
- Location: Treasure Coast's Premier Dealers Row

## Property Overview

Rarely does a dealership come available on the Treasure Coast's premier dealers row. Situated along the region's primary commercial corridor, US Highway 1 in Fort Pierce, this area is a marque destination for auto, RV, marine and equipment sale and rental.

Ideal for a wide range of uses requiring a high land to building ratio and a sales and service building, this property checks all the boxes.

Centrally located to the region's +750,000 residents, the property has easy access to I-95 and the Florida Turnpike.

Priced below replacement cost, this opportunity will allow immediate entry into this high demand market with otherwise high barriers to entry.













Atlantic Ocean

Indian River

**SUBJECT**

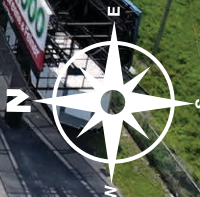
±20,505 TOTAL SF  
SHOWROOM RETAIL



S US HIGHWAY 1

31,500 AADT

NEESE  
ROOFING  
CONSTRUCTION





LOOKING  
NORTH



**SUBJECT**

±20,505 TOTAL SF  
SHOWROOM RETAIL

31,500 AADT

S US HIGHWAY 1



±20,505 SF DEALERSHIP/SERVICE OPPORTUNITY | 3410 S US Highway 1, Fort Pierce, FL 34982

**NAI**Southcoast



LOOKING  
SOUTH



**SUBJECT**

±20,505 TOTAL SF  
SHOWROOM RETAIL

S MARKET AVE

S US HIGHWAY 1

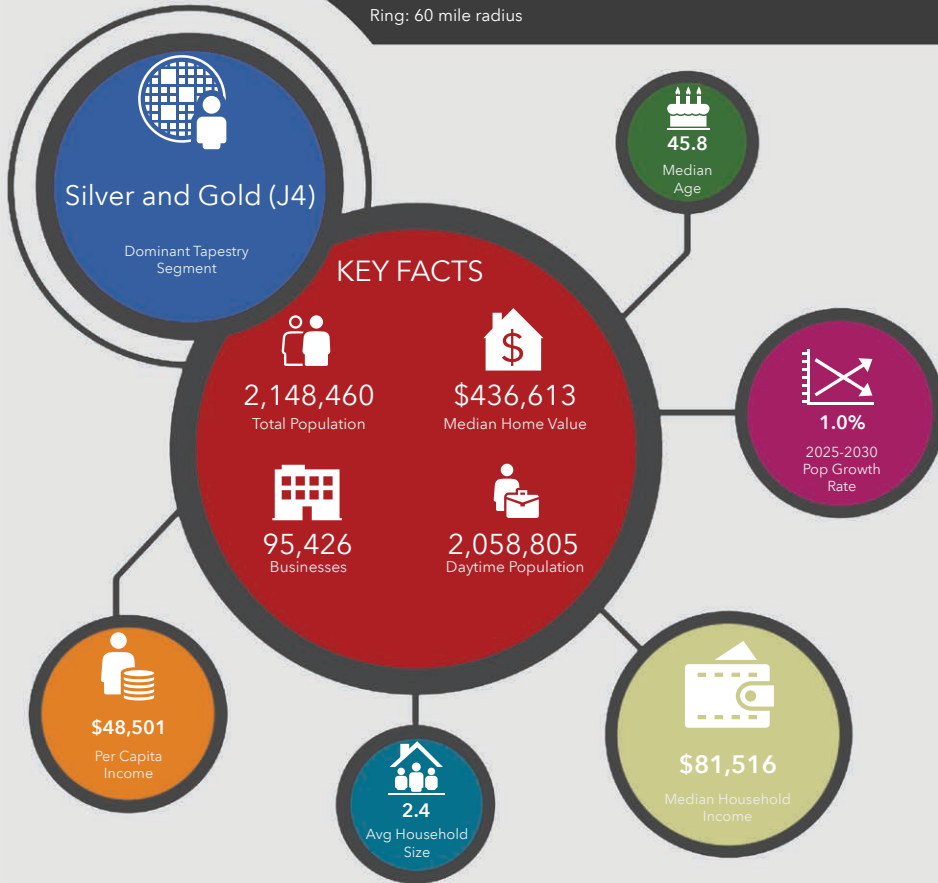
31,500 AADT

±20,505 SF DEALERSHIP/SERVICE OPPORTUNITY | 3410 S US Highway 1, Fort Pierce, FL 34982

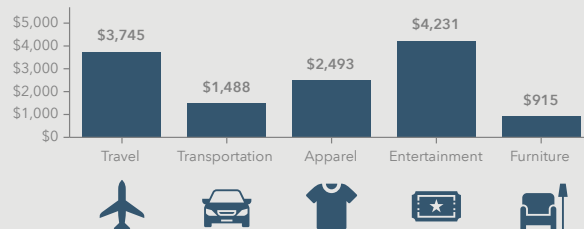
**NAI**Southcoast



3410 S US Highway 1, Fort Pierce, Florida, 34982  
Ring: 60 mile radius



#### KEY SPENDING FACTS



**NAISouthcoast**  
COMMERCIAL REAL ESTATE SERVICES

**Source:** This infographic contains data provided by Esri (2025, 2030), Esri-Data Axle (2025), Esri-U.S. BLS (2025).

© 2025 Esri

Spending facts are average annual dollars per household

#### Population

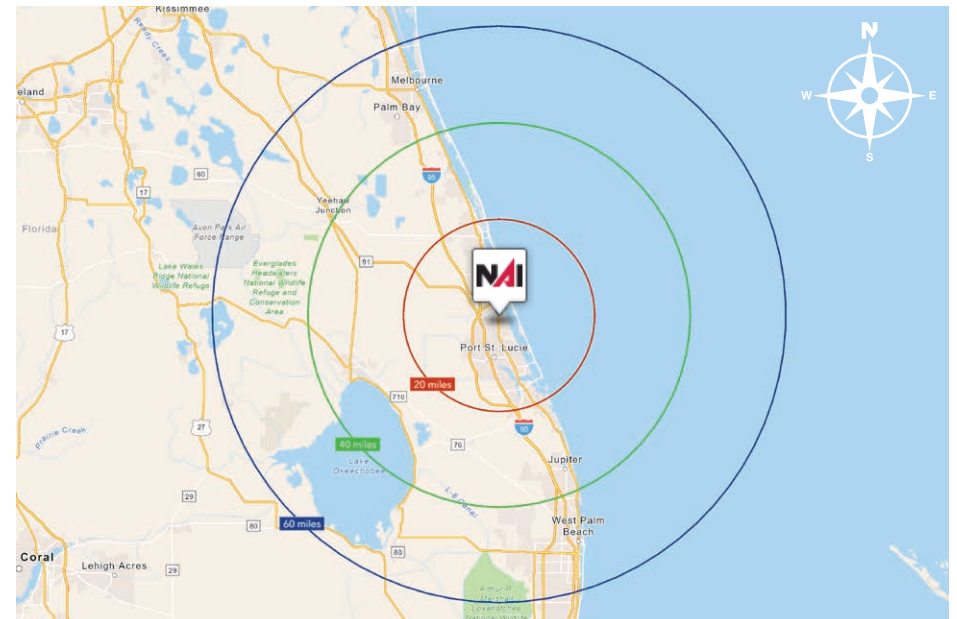
20 Miles:	587,314
40 Miles:	893,207
60 Miles:	2,148,460

#### Average Household Income

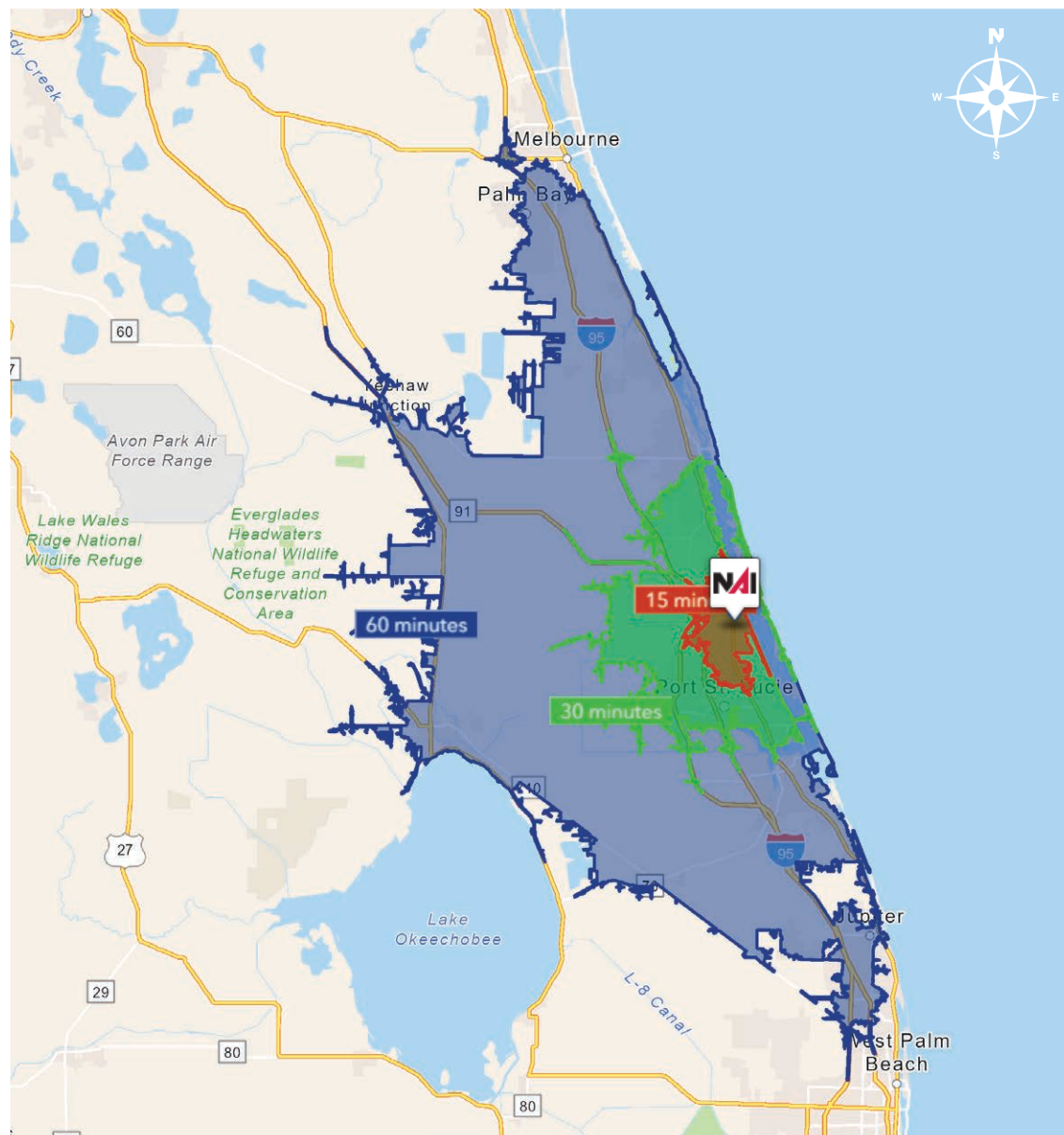
20 Miles:	\$102,513
40 Miles:	\$118,833
60 Miles:	\$119,466

#### Median Age

20 Miles:	49.2
40 Miles:	50.5
60 Miles:	45.8







15 Minutes	30 Minutes	60 Minutes
<b>83,922</b> 2010 Population	<b>298,647</b> 2010 Population	<b>807,409</b> 2010 Population
<b>98,630</b> 2025 Population	<b>383,503</b> 2025 Population	<b>1,007,149</b> 2025 Population
<b>1.73%</b> 2025-2030 (Annual) Est. Population Growth	<b>2.15%</b> 2025-2030 (Annual) Est. Population Growth	<b>1.51%</b> 2025-2030 (Annual) Est. Population Growth
<b>42.8</b> 2025 Median Age	<b>47.0</b> 2025 Median Age	<b>49.1</b> 2025 Median Age
<b>\$73,899</b> Average Household Income	<b>\$93,596</b> Average Household Income	<b>\$112,890</b> Average Household Income
<b>33.6%</b> Percentage with Associates Degree or Better	<b>40.3%</b> Percentage with Associates Degree or Better	<b>45.8%</b> Percentage with Associates Degree or Better
<b>53.9%</b> Percentage in White Collar Profession	<b>57.7%</b> Percentage in White Collar Profession	<b>61.0%</b> Percentage in White Collar Profession



## City of Ft. Pierce, Florida

Fort Pierce is famous for being a quaint fishing village, but take a closer look and you will find a treasure trove of activities. As one of the most diverse communities on the Treasure Coast, Fort Pierce has the cultural excitement to rival any “big city” atmosphere. With weekly and monthly events and premier shows at the Sunrise Theatre, visitors never run out of things to do or people to meet.

Fort Pierce is located on the pristine Indian River Lagoon with one of the best all-weather inlets in the state of Florida. Even though Fort Pierce is known for its world class fishing, some visitors would rather take an eco-friendly motorized kayak down the Indian River or dolphin watch on a tour boat. Paddle boarding and horseback riding on unspoiled beaches is also a hit among tourists. Fort Pierce’s natural beauty is world renowned.

Our cultural enhancements include the Zora Neale Hurston Trail, commemorating the noted author and anthropologist who lived her last years in Fort Pierce and the Highwaymen Heritage Trail. The Highwaymen, also referred to as the Florida Highwaymen, are 26 storied, world-renown African American landscape artists who originated in the City of Fort Pierce. Visitors from all over the United States visit Fort Pierce to experience the Highwaymen Heritage Trail, a self-guided engaging and educational experience that recognizes these mostly self-taught landscape artists who have strong local, state, national and international significance.

Museums in Fort Pierce include the newly-enlarged Florida landscape artist A.E. “Beanie” Backus museum and the St. Lucie Regional History Museum, with its satellite Adams Cobb Cultural Museum in the P.P. Cobb Building. Fort Pierce’s most popular tourist attraction, the National UDT Navy SEAL museum, commemorates the birth of the Navy frogmen here in Fort Pierce, and chronicles the evolution of this military unit to today’s Navy SEALs.

Fort Pierce City Marina is home to the Southern Kingfish Association’s National Championship Fishing Tournament every three years bringing 250-300 fishing teams to Downtown Fort Pierce. SKA has also committed to add Fort Pierce to the tournament’s Pro Tour schedule during the off years.



## St. Lucie County, Florida

Extensive, dependable transportation and easy access is the key to growth, and St. Lucie County has both in abundance. Interstate Highway 95 and U.S. Highway 1 provide easy access to the country's east coast, from Key West to Maine. The Florida Turnpike stretches from just south of Miami through northern-central Florida, while State Road 70 runs from U.S. Highway 1 in Fort Pierce west to Bradenton, Florida. St. Lucie County offers a plethora of transportation linkages which include rail, a custom-serviced international airport, and a deep-water port – all of which enable easy access to all St. Lucie County has to offer. The St. Lucie County International Airport is also one of the busiest general aviation airports in the state.

The county has a population of over 358,704 and has experienced growth of over 28% since 2010. The area economy is a blend of emerging life science R&D with traditional manufacturing, agriculture, tourism and services. St. Lucie County's natural resources are enviable, with more than 21 miles of pristine coastline and beaches, coral reefs, more than 20,000 acres of public parks and nature preserves, and miles of rivers and waterways. The area boasts over 20 public and semiprivate courses, with prices ranging from upscale to very affordable, and the great weather allows for play all year round. St. Lucie County is home to Clover Park in Port St. Lucie, the Spring training home of the New York Mets.

The county is host to Indian River State College, an institution that has won national recognition for excellence and innovation applied toward training and education. St. Lucie County boasts 52 schools with a total of 43,612 students and 8,800 staff. The Economic Development Council of St. Lucie County (EDC) is a non-profit organization with the goal of creating more, high-paying jobs for residents by working in concert on agreed upon strategies to promote the retention and expansion of existing businesses, as well as attracting new ones to St. Lucie County. Workers employed in St. Lucie County are clustered in the Health Care and Social Assistance (18.4%), and Retail Trade (11.9%) industries. Workers living in St. Lucie County are concentrated in the Health Care and Social Assistance (16.3%), and Retail Trade (14.1%) industries. Since 2017 the EDC has facilitated 40 expansion and new attraction job creating projects with a net growth of building area of approximately 6,500,000 square feet.







Douglas Legler  
Principal | Broker Associate  
+1 772 405 7778  
douglas@naisouthcoast.com



Casey Combs  
Broker Associate  
+1 772 285 8769  
ccombs@naisouthcoast.com

±20,505 SF Dealership/Service Opportunity  
3410 S US Highway 1, Fort Pierce, FL 34982

FOR SALE:  
**\$9,450,000**